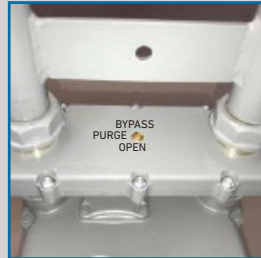


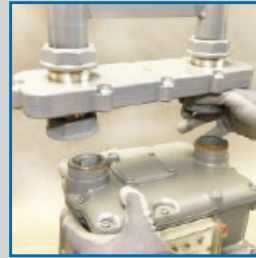
Commercial Co-Pilot® Meter Bypass System Operating Instructions



1. Unlock the Co-Pilot



2. Turn the Co-Pilot to BY-PASS



3. Remove the old meter



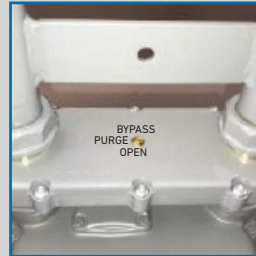
4. Connect the inlet side of the new meter & install a nut plug in the outlet



5. Turn the Co-Pilot to PURGE. Purge for one revolution of 1/2 ft. mark



6. Turn back to BY-PASS and remove the meter nut plug



7. Connect the outlet side of the new meter and turn to OPEN



8. Lock the security cover plate

Installation Instructions



1. Before installation, blow out the service lines so no dirt, debris, or liquids of any kind are carried into the Bypass when the gas is flowing in the line.
2. Place a new connection washer (gasket) on each swivel pilot.
3. Support the Co-Pilot Bypass so both hubs are against the connection washers. Hand-tighten the connection nuts.
4. In alternating fashion, tighten the connection nuts to an appropriate torque for the connection size.
5. Support the meter so both hubs are against the connection washers. Hand-tighten the connection nuts.
6. In an alternating fashion, tighten the connection nuts to an appropriate torque for the connection size.
7. After the meter is pressurized, check for leaks by applying a soap solution or other good leak detecting liquid to the connections.