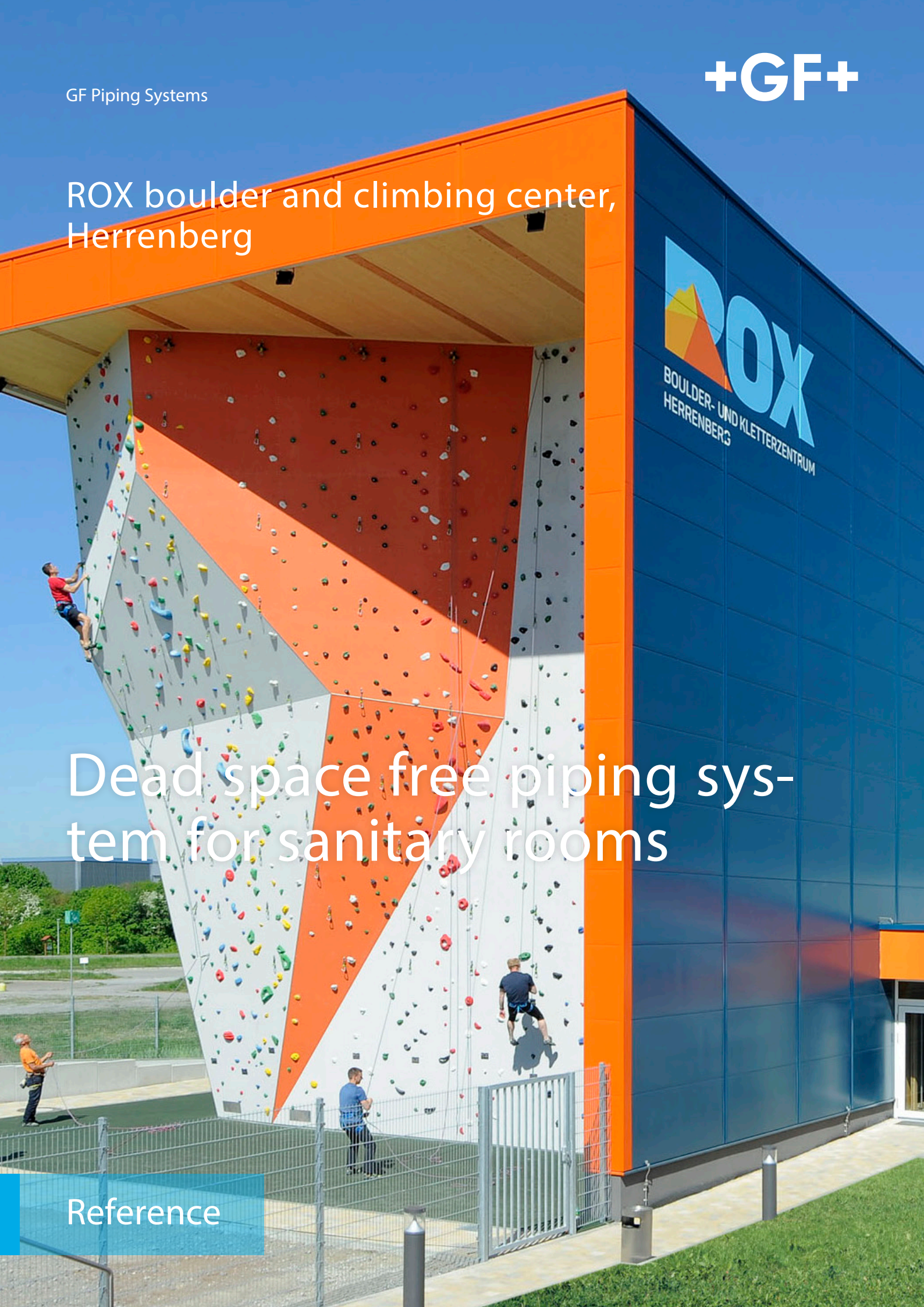


ROX boulder and climbing center, Herrenberg

Dead space free piping system for sanitary rooms

Reference



Climbing towards the sky in the hall without mold

ROX boulder and climbing center in Herrenberg (Stuttgart area)

The two operators and climbing enthusiasts Edmund Hirth and Andreas Leibinger want to inspire people for the sport of climbing and therefore realized the ROX boulder and climbing center in Herrenberg (Stuttgart area). To complement the high-pressure cleaner-resistant WandoVario® system used, Hug, the planning and installation company responsible, chose the Sanipex MT dead space-free piping system for the sanitary rooms. This reliably prevents moisture from escaping and biofilm from forming in the pipe.

Project background

In the newly built climbing facility, visitors can expect 1180 square meters of training space with walls up to 15 meters high. There are indoor and outdoor facilities for climbing or bouldering (without rope and harness) and slacklines for balancing. Since the wet rooms are indoors and artificially ventilated, mold quickly develops here. The client therefore demanded a system to reliably prevent this. In addition, a fast and precise assembly had to be carried out in a short construction time, as a fixed opening date was communicated.

Selected technical solution

Sanipex MT was a convincing choice as the piping system for the sanitary and bathroom areas, which in combination with the jointless, back-ventilated WandoVario® system from Hug ensures hygienic operation. The technical sales department for building technology at GF Piping Systems provided support right from the start, for example in product selection and the preparation of parts lists. In addition, at the time of construction, Hug had changed their portfolio of pipe systems in use and did not yet have their own tooling for the new products. Free tools for the installation of Sanipex MT were immediately provided.

Accomplished improvements

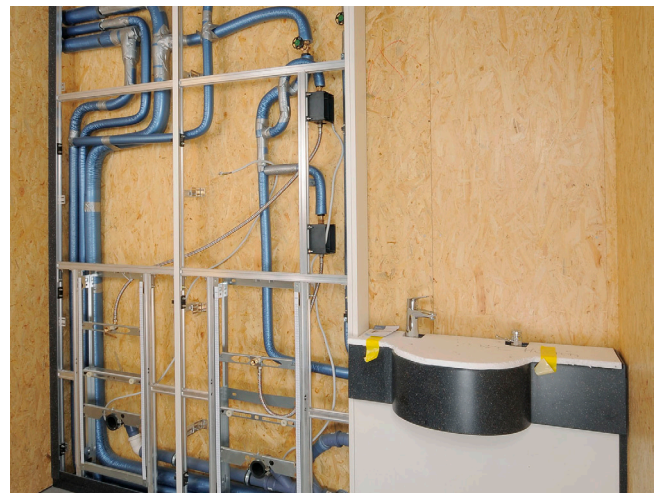


For the sanitary facilities of the newly built climbing hall, the responsible parties demanded a reliable, mold-preventing wall cladding and piping system that could be installed quickly.

With the dead space-free pipes and secure connections, the overall hygienic concept is consistently implemented right down to the sanitary installation. At the same time, the components can also be detached again, thus maintaining the flexibility of the WandoVario® system. In addition, considerable costs are saved during installation expansions by reusing the parts.

Customer benefits Sanipex MT

- The components used have high resistance to corrosion and limescale
- Prevents moisture leakage and biofilm formation in the pipe
- Complete prefabrication, which ensured that the deadline was met
- Intelligent jointing technology ensures full flow with minimal pressure loss and very quiet flow noise
- Free sample material and tool training for the customer



The compact design of Sanipex MT enabled complete prefabrication, which saved time and thus ensured that the deadline was met. [Picture credits "Hug GmbH und Co KG"]

The information and technical data (together "data") contained herein are not binding unless explicitly confirmed in writing. The data does not constitute explicit, implicit, or warranted characteristics, nor guaranteed properties or guaranteed durability. All data is subject to modification. The general conditions of supply of GF Piping Systems apply.

Georg Fischer GmbH | 73095 Albershausen, Germany | Phone +49 (0) 7161 302 0 | info.de.ps@georgfischer.com | www.gfps.com/de

