

iFIT Reference Three Point, Dübendorf

# Drinking Water at Lofty Heights

Three Point Residential Towers, Dübendorf, Switzerland

Fine distribution of drinking water to 450 apartments. This simple, fast and safe installation is thanks to the modular push-fit system iFIT, by GF Piping Systems.

# Superb prospects in Switzerland's tallest residential towers

In Dübendorf, on the outskirts of the metropolis of Zurich, three residential towers are reaching for the skies. The tallest measures 115 meters and comprises 38 floors. Together with the other two towers, with 34 and 36 stories, these elegant skyscrapers accommodate around 450 apartments. All were sold before completion (scheduled for early 2024). For the fine distribution of drinking water in the comfortable apartments, the main contractor ADT INNOVA Construction AG went for the patented push-fit system iFIT.

## Background to the project

Construction projects are having to be realized at an ever-increasing speed and more cost-effectively than ever before – without compromising on quality, of course. To deal with the thousands of interfaces in the large-scale construction project, the planners used BIM (Building Information Modeling). The building technology is also integrated into the digital planning concept. Implementation, however, is still a matter of craftsmanship. Fulfilling the goals of speed and quality calls for smart products that help achieve fault-free installations within the shortest possible time.

## Chosen technical solution

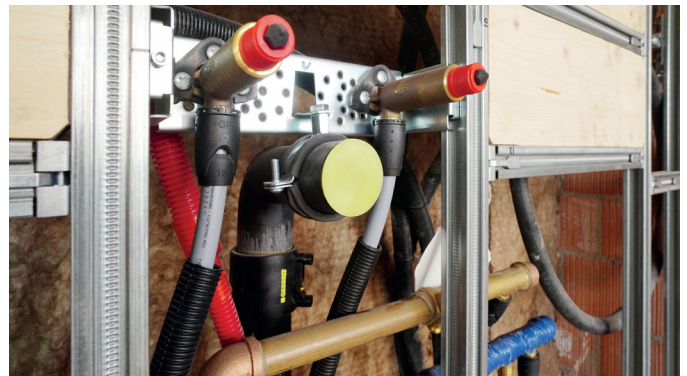
The patented system iFIT from GF Piping Systems with sheathed pipes made of flexible and durable polybutene was chosen to flush and finely distribute the drinking water to the consumption points in the apartments. Two pipe dimensions can be connected with just one module (16/20 or 25/32). This reduces the otherwise usual range for installations by around 50%, creating huge benefits for storage and logistical arrangements on the construction site. Some 29 km of polybutene pipes, 6,900 modules and 15,000 adapters have been installed in the three residential towers.

## Improvements achieved

A key factor in the choice of iFIT was the simplicity of system installation. Even employees without full training achieved a professional installation without any problems after a brief induction by the GF Piping Systems Building Technology Sales Department. Maik Ohff, installation manager of the building services engineering company E.O. Knecht AG, confirms: «iFIT is easy to handle. No electricity and only a few tools are needed for installation. The pipe is easy to move and replace. Besides, the program is clearly arranged and offers everything that's necessary.»



The iFIT pipes (black) are fitted for the drinking water supply to the apartments.



The adapter module technology is easy and safe to use.

## Benefits of iFIT

- **Simple and quick installation by hand, requires little training, few tools, and can be processed without electricity**
- **High operational reliability: resistance to corrosion and calcification, secure connection thanks to viewing window in the adapter and clicking noise on connection**
- **Economical and sustainable thanks to 50% fewer products, low stock levels, lean logistics on the construction site and reusability of modules**



## Your Contact

Georg Fischer Piping Systems Ltd  
Ebnatstrasse 111  
8201 Schaffhausen / Schweiz

Phone +41 (0)52 631 11 11  
mail@georgfischer.com  
www.gfps.com

The information and technical data (altogether "Data") herein are not binding, unless explicitly confirmed in writing. The Data neither constitutes any expressed, implied or warranted characteristics, nor guaranteed properties or a guaranteed durability. All Data is subject to modification. The General Terms and Conditions of Sale of Georg Fischer Piping Systems apply.