

NeoFlow Pressure Regulating Valve

Effective and improved pressure management

Aqua Live Hotel in Cancún, Mexico

A reliable and cost effective solution
using the NeoFlow Pressure Regulating Valve.

NeoFlow provides a lighter pressure management solution

HOTEL AQUA LIVE, located in Cancún, Quintana Roo, has successfully implemented a state-of-the-art solution for controlling and regulating the pressure in its hotel service lines. By utilizing reliable, lightweight, and corrosion-free valves, the hotel has achieved remarkable results.

Project background

Hotel Aqua Live was experiencing maintenance problems with its previous metal PRV. The previous metal valve was unwieldy and difficult to handle during servicing. To regulate the hotel's water pressure and reduce complexity, Hotel Aqua Live chose NeoFlow as the solution for their hotel service lines. Fully customizable and easy to integrate into the existing systems, it could be configured to reduce the pressure as required.

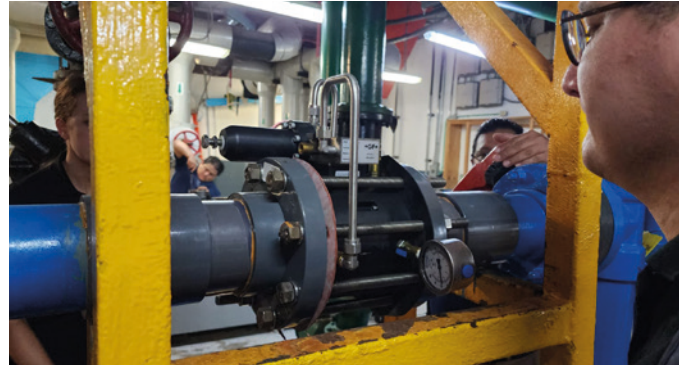
Selected technical solution

Hotel Aqua Live installed a NeoFlow Pressure Regulating Valve from GF Piping Systems to accurately manage the pressure in its service lines. The NeoFlow PRV is up to 9 times lighter than a metal valve, eliminating the need for special metal valve supports. The calibration time for the NeoFlow PRV is very short and its three primary components are adjusted with simple tools.

Achieved improvement

The NeoFlow PRV operates flawlessly, ensuring precise water distribution thanks to its axial flow design, which guarantees a consistent and stable flow. The lightweight nature of the NeoFlow valve eliminated the need for additional support typically required by metallic valves. As a result of the exceptional performance of the NeoFlow valve, the customer decided to order the distribution headers in PPH material from GF Piping Systems along side the NeoFlow pressure regulating valves. Furthermore, the hydraulic arrangement includes the incorporation of three additional 4" NeoFlow valves.

The customer satisfaction with NeoFlow also reflects the achieved improvements: "The NeoFlow valve operates at 100%, controlling perfectly." ~Rodrigo Martínez, Maintenance Manager at Hotel Live Aqua.



The NeoFlow pressure regulating valve can be fully serviced in less than one hour due to its mechanical simplicity and low weight.



Thanks to its compact body design the valve is up to nine times lighter and can decrease installation time by up to 40% compared to a standard metal PRV.

Customer benefits

- The NeoFlow valve operates from 1% to 100% opening, and provides extreme precision and stability
- Up to 40% faster installation
- Due to the lightweight of NeoFlow, no additional support is required for the valve

Your contact

Georg Fischer Piping Systems Ltd
Ebnatstrasse 111
8201 Schaffhausen / Switzerland

Telephone +41 (0)52 631 11 11
info.ps@georgfischer.com
www.gfps.com

Co-developed with OFUI



The information and technical data (altogether "Data") herein are not binding, unless explicitly confirmed in writing. The Data neither constitutes any expressed, implied or warranted characteristics, nor guaranteed properties or a guaranteed durability. All Data is subject to modification. The General Terms and Conditions of Sale of Georg Fischer Piping Systems apply.

