

Piping system solution for marine applications

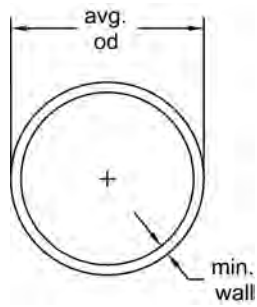
Marine Grade PVC Product Range 2020



Table of contents

Marine PVC Pressure Pipe	1
Marine Schedule 80 PVC Fittings	2
Marine Joining Accessories	22

Marine PVC Pressure Pipe

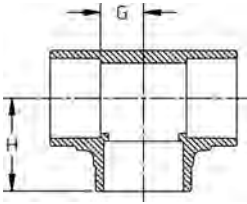


Marine Grade 1120 PVC Schedule 80

Size (inch)	P/L	Plain End Part No.	Lift Qty. (20ft Lgths) (ft)	Average O.D. (inch)	Min. Wall (inch)	Wt/Ft (lbs/ft)	Max Pres- sure @ 73°F (22.7°C) (psi)
1/2	H53	37N021005	5700	0.840	0.147	0.202	850
3/4	H53	37N021007	5260	1.050	0.154	0.273	690
1	H53	37N021010	4280	1.315	0.179	0.402	630
1 1/4	H53	37N021012	2360	1.660	0.191	0.554	520
1 1/2	H53	37N021015	2060	1.900	0.200	0.673	470
2	H53	37N021020	1660	2.375	0.218	0.932	400
2 1/2	H53	37N021025	1080	2.875	0.276	1.419	420
3	H53	37N021030	840	3.500	0.300	1.903	370
4	H53	37N021040	520	4.500	0.337	2.782	320
6	H53	37N021060	340	6.625	0.432	5.313	280
8	H53	37N021080	220	8.625	0.500	8.058	250
10	H53	37N021100	80	10.750	0.593	11.956	230
12	H53	37N021120	60	12.750	0.687	16.437	230

Marine Schedule 80 PVC Fittings

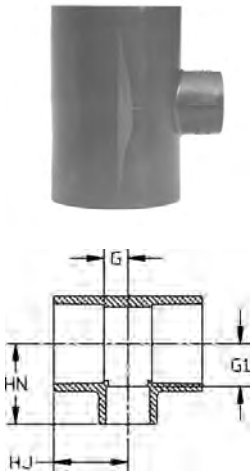
Schedule 80 PVC Pressure Fittings



Tee (S x S x S)

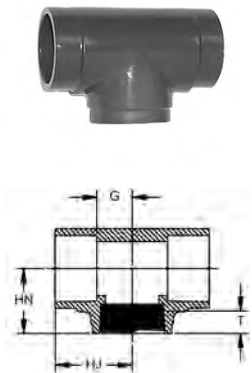
Size (inch)	P/L	Part No.	Pack Qty	H (inch)	G (inch)	Design
¼	608	801-002	50	0.92	0.29	HS
⅜	608	801-003	50	1.16	0.40	HS
½	608	801-005	25	1.49	0.50	SL
¾	608	801-007	25	1.61	0.56	SL
1	608	801-010	20	1.86	0.72	SL
1 ¼	608	801-012	10	2.19	0.91	SL
1 ½	608	801-015	10	2.44	1.06	SL
2	608	801-020	10	2.78	1.29	SL
2 ½	608	801-025	5	3.33	1.50	SL
3	608	801-030	5	3.75	1.85	SL
4	608	801-040	5	4.63	2.38	SL
6	608	801-060	2	6.63	3.55	SL
8	608	801-080	1	8.70	4.59	SL
10	602	801-100	1	10.83	5.77	SL
12	602	801-120	1	13.38	6.91	SL

Reducing Tee (S x S x S)



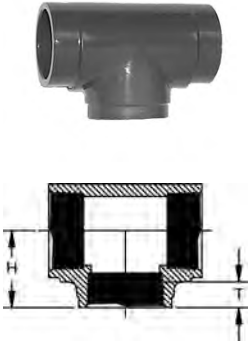
Size (inch)	P/L	Part No.	Pack Qty	HJ (inch)	HN (inch)	G (inch)	G1 (inch)	Design
¾ x ½	608	801-101	25	1.63	1.63	0.61	0.73	SL
1 x ½	608	801-130	25	1.88	1.63	0.73	0.75	SL
1 x ¾	608	801-131	20	1.88	1.87	0.73	0.86	SL
1 ¼ x 1	608	801-168	20	2.00	2.00	0.73	0.91	SL
1 ½ x ½	608	801-209	5	1.91	1.93	0.54	1.05	SL
1 ½ x ¾	608	801-210	5	2.00	2.00	0.61	1.05	SL
1 ½ x 1	608	801-211	5	2.13	2.20	0.73	0.81	SL
2 x ½	608	801-247	5	2.04	2.19	0.53	1.30	SL
2 x ¾	608	801-248	5	2.13	2.31	0.73	1.29	SL
2 x 1	608	801-249	5	2.25	2.44	0.73	1.26	SL
2 x 1 ¼	608	801-250FB	5	2.78	3.11	1.29	1.85	BUSH
2 x 1 ½	608	801-251	5	2.56	2.69	1.05	1.29	SL
2 ½ x 1	608	801-289FB	5	3.04	3.32	1.28	1.53	SL
2 ½ x 2	608	801-292	5	3.04	3.03	1.28	1.53	SL
3 x 1	608	801-335FB	5	3.17	3.63	1.28	1.83	SL
3 x 2	608	801-338	5	3.21	3.40	1.31	1.87	SL
4 x ¾	608	801-416FB	5	3.52	4.18	1.26	3.15	BUSH
4 x 1	608	801-417	5	3.52	4.18	1.26	3.15	SL
4 x 1 ½	608	801-419FB	5	3.52	4.16	1.26	2.77	BUSH
4 x 2	608	801-420	5	3.52	3.88	1.26	2.37	SL
4 x 3	608	801-422	5	4.15	4.31	1.87	2.39	SL
6 x ¾	608	801-524FB	2	6.58	7.46	3.49	6.43	BUSH
6 x 1	608	801-525FB	2	6.58	7.21	3.56	5.65	BUSH
6 x 2	608	801-528FB	2	6.58	7.21	3.56	5.65	BUSH
6 x 3	608	801-530FB	2	6.58	7.21	3.49	5.26	BUSH
6 x 4	608	801-532	2	6.58	6.81	3.49	4.50	HS
8 x 4	608	801-582	2	8.40	8.75	4.31	6.48	SL
8 x 6	608	801-585	1	7.63	7.52	3.59	4.50	SL
10 x 2	A33	801-619N	1	9.75	12.75	4.75	11.50	FAB
10 x 3	A33	801-621N	1	10.25	12.50	5.25	11.00	FAB
10 x 4	A33	801-623N	1	10.75	11.75	5.75	9.75	FAB
10 x 6	A33	801-626N	1	11.88	12.75	6.88	9.75	FAB
10 x 6	602	801-626FB	1	10.85	11.98	5.75	8.88	BUSH
10 x 8	A33	801-628N	1	12.88	13.75	7.88	9.75	FAB
10 x 8	602	801-628FB	1	10.85	11.41	5.75	7.32	BUSH
12 x 2	A33	801-659N	1	11.00	13.75	5.00	12.50	FAB
12 x 3	A33	801-661N	1	11.50	13.50	5.50	12.00	FAB
12 x 4	A33	801-663N	1	12.00	12.75	6.00	10.75	FAB
12 x 6	A33	801-666N	1	13.13	13.75	7.13	10.75	FAB
12 x 8	A33	801-668N	1	14.13	14.75	8.13	10.75	FAB
12 x 8	602	801-668FB	1	13.00	13.69	6.81	9.25	BUSH
12 x 10	A33	801-670N	1	15.13	16.75	9.13	10.75	FAB
12 x 10	602	801-670FB	1	13.00	13.53	6.81	8.44	BUSH

Tee (S x S x FPT)



Size (inch)	P/L	Part No.	Pack Qty	HJ (inch)	HN (inch)	G (inch)	T (inch)	Design
½	608	802-005	25	1.39	1.39	0.52	0.53	HS
¾	608	802-007	25	1.58	1.37	0.58	0.55	HS
1	608	802-010	15	1.83	1.70	0.70	0.68	HS
1 ½	608	802-015	5	2.42	2.08	1.03	0.72	HS
2	608	802-020	5	2.79	2.35	1.28	0.76	HS

Tee (FPT x FPT x FPT)



Size (inch)	P/L	Part No.	Pack Qty	H (inch)	T (inch)	Design
¼	608	805-002	50	0.92	0.40	HS
¾	608	805-003	50	1.16	0.41	HS
½	608	805-005	25	1.27	0.53	HS
¾	608	805-007	25	1.38	0.55	HS
1	608	805-010	15	1.70	0.68	HS
1 ¼	608	805-012	10	1.93	0.71	HS
1 ½	608	805-015	5	2.08	0.72	HS
2	608	805-020	5	2.35	0.76	HS
2 ½	608	805-025	5	2.88	1.14	HS
3	608	805-030	5	3.50	1.20	HS
4	608	805-040	5	4.06	1.30	HS

90° Ell (S x S)



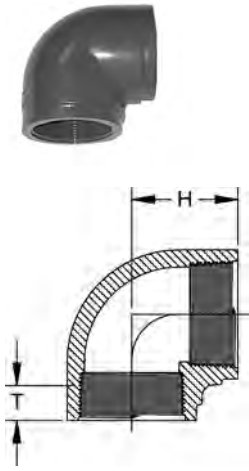
Size (inch)	P/L	Part No.	Pack Qty	H (inch)	G (inch)	Design
¼	608	806-002	50	0.95	0.33	HS
¾	608	806-003	50	1.17	0.41	HS
½	608	806-005	25	1.41	0.50	SL
¾	608	806-007	25	1.61	0.56	SL
1	608	806-010	10	1.86	0.69	SL
1 ¼	608	806-012	10	2.16	0.91	SL
1 ½	608	806-015	10	2.41	1.03	SL
2	608	806-020	20	2.78	1.28	SL
2 ½	608	806-025	5	3.29	1.53	SL
3	608	806-030	5	3.75	1.85	SL
4	608	806-040	5	4.60	2.34	SL
6	608	806-060	2	6.70	3.69	SL
8	608	806-080	1	8.67	4.59	SL
10	602	806-100	1	10.75	5.75	SL
12	602	806-120	1	12.96	6.91	SL

90° Ell (S x FPT)



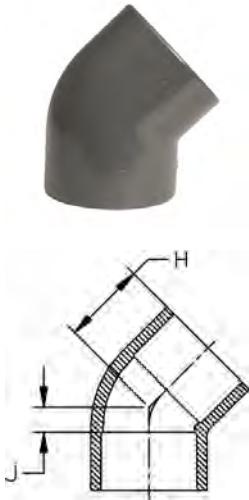
Size (inch)	P/L	Part No.	Pack Qty	HJ (inch)	HN (inch)	G (inch)	T (inch)	Design
½	608	807-005	25	1.80	1.28	0.50	0.53	HS
¾	608	807-007	25	1.57	1.38	0.56	0.55	HS
1	608	807-010	10	1.82	1.70	0.69	0.68	HS
1 ¼	608	807-012	10	2.16	1.93	0.91	0.71	HS
1 ½	608	807-015	10	2.41	2.07	1.03	0.72	HS
2	608	807-020	5	2.78	2.35	1.28	0.76	HS
3	608	807-030	5	3.75	3.50	1.85	1.20	HS

90° Ell (FPT x FPT)



Size (inch)	P/L	Part No.	Pack Qty	H (inch)	T (inch)	Design
¼	608	808-002	50	0.92	0.40	HS
⅜	608	808-003	50	1.00	0.41	HS
½	608	808-005	25	1.29	0.53	HS
¾	608	808-007	25	1.38	0.55	HS
1	608	808-010	10	1.70	0.68	HS
1 ¼	608	808-012	10	1.93	0.71	HS
1 ½	608	808-015	10	2.06	0.72	HS
2	608	808-020	5	2.36	0.76	HS
2 ½	608	808-025	5	3.00	1.14	HS
3	608	808-030	5	3.50	1.20	HS
4	608	808-040	5	4.13	1.30	HS

45° Ell (S x S)



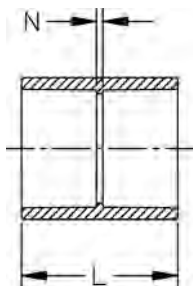
Size (inch)	P/L	Part No.	Pack Qty	H (inch)	J (inch)	Design
¼	608	817-002	50	0.81	0.13	HS
⅜	608	817-003	50	0.94	0.19	HS
½	608	817-005	25	1.21	0.25	SL
¾	608	817-007	20	1.32	0.33	SL
1	608	817-010	25	1.47	0.29	SL
1 ¼	608	817-012	15	1.70	0.40	SL
1 ½	608	817-015	10	1.88	0.44	SL
2	608	817-020	5	2.16	0.60	SL
2 ½	608	817-025	5	2.53	0.76	SL
3	608	817-030	5	2.66	0.78	SL
4	608	817-040	5	3.24	0.95	SL
6	608	817-060	2	4.81	1.74	SL
8	608	817-080	2	6.11	2.02	SL
10	602	817-100	1	7.50	2.50	SL
12	602	817-120	1	9.00	3.00	SL

45° Ell (FPT x FPT)



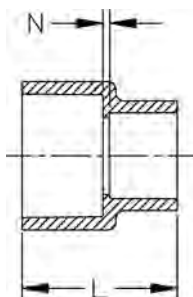
Size (inch)	P/L	Part No.	Pack Qty	H (inch)	T (inch)	Design
¼	608	819-002	50	0.76	0.40	HS
⅜	608	819-003	50	0.94	0.41	HS
½	608	819-005	25	1.02	0.53	HS
¾	608	819-007	20	1.14	0.55	HS
1	608	819-010	25	1.33	0.68	HS
1 ¼	608	819-012	15	1.40	0.71	HS
1 ½	608	819-015	10	1.52	0.72	HS
2	608	819-020	5	1.72	0.76	HS
3	608	819-030	5	2.44	1.20	HS
4	608	819-040	5	2.77	1.30	HS

Coupling (S x S)

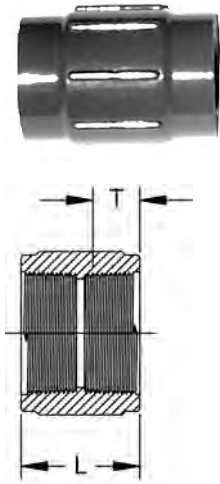


Size (inch)	P/L	Part No.	Pack Qty	L (inch)	N (inch)	Design
¼	608	829-002	50	1.39	0.14	HS
⅜	608	829-003	50	1.64	0.14	HS
½	608	829-005	25	1.93	0.13	SL
¾	608	829-007	20	2.18	0.13	SL
1	608	829-010	25	2.41	0.13	SL
1 ¼	608	829-012	10	2.64	0.12	SL
1 ½	608	829-015	10	2.90	0.13	SL
2	608	829-020	20	3.14	0.12	SL
2 ½	608	829-025	5	3.75	0.16	SL
3	608	829-030	5	4.05	0.25	SL
4	608	829-040	5	4.79	0.25	SL
6	608	829-060	2	6.41	0.34	SL
8	608	829-080	2	8.40	0.34	SL
10	602	829-100	1	10.81	0.75	SL
12	602	829-120	1	12.81	0.75	SL

Reducing Coupling (S x S)



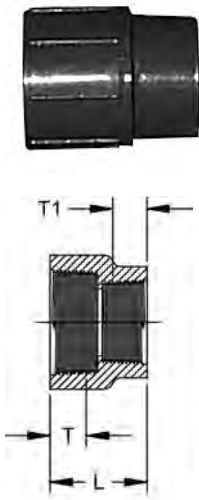
Size (inch)	P/L	Part No.	Pack Qty	L (inch)	N (inch)	Design
¼ x ½	608	829-101	20	2.16	0.14	HS
1 x ½	608	829-130	25	2.12	0.09	HS
1 x ¾	608	829-131	25	2.26	0.12	HS
1 ¼ x 1	608	829-168	10	2.54	0.09	HS
1 ½ x ½	608	829-209FB	10	3.34	0.17	BUSH
1 ½ x ¾	608	829-210	10	3.34	0.17	BUSH
1 ½ x 1	608	829-211	10	2.66	0.10	HS
1 ½ x 1 ¼	608	829-212	10	2.82	0.10	HS
2 x ½	608	829-247FB	5	3.35	0.88	BUSH
2 x ¾	608	829-248	5	3.05	0.47	HS
2 x 1	608	829-249	5	3.12	0.33	HS
2 x 1 ¼	608	829-250	5	3.00	0.13	HS
2 x 1 ½	608	829-251	5	3.05	0.10	HS
2 ½ x 1 ½	608	829-291	5	3.30	0.13	HS
2 ½ x 2	608	829-292FB	5	4.00	0.65	BUSH
3 x 1	608	829-335FB	5	4.55	1.52	BUSH
3 x 1 ½	608	829-337FB	5	4.55	1.16	BUSH
3 x 2	608	829-338	5	3.61	0.16	HS
3 x 2 ½	608	829-339FB	5	4.49	0.76	BUSH
4 x 2	608	829-420FB	5	4.94	1.12	BUSH
4 x 3	608	829-422	5	4.39	0.26	HS
6 x 4	608	829-532	2	10.25	3.50	HS
8 x 4	608	829-582FB	2	9.77	3.42	BUSH
8 x 6	608	829-585	2	9.26	2.07	HS
10 x 4	A33	829-623N	1	17.50	10.50	FAB
10 x 6	A33	829-626N	1	13.25	5.25	FAB
10 x 6	602	829-626FB	1	10.96	2.90	BUSH
10 x 8	A33	829-628N	1	12.75	3.75	FAB
10 x 8	602	829-628FB	2	11.18	2.07	BUSH
12 x 8	A33	829-668N	1	15.50	5.50	FAB
12 x 8	602	829-668FB	1	13.40	2.97	BUSH
12 x 10	A33	829-670N	1	15.00	4.00	FAB
12 x 10	602	829-670FB	1	13.24	2.13	BUSH



Coupling (FPT x FPT)

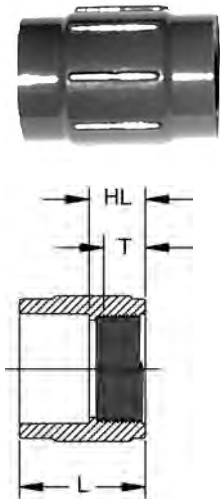
Size (inch)	P/L	Part No.	Pack Qty	L (inch)	T (inch)	Design
¼	608	830-002	50	1.30	0.40	HS
⅜	608	830-003	50	1.34	0.41	HS
½	608	830-005	25	1.66	0.53	HS
¾	608	830-007	20	1.73	0.55	HS
1	608	830-010	25	2.10	0.68	HS
1 ¼	608	830-012	10	2.19	0.71	HS
1 ½	608	830-015	10	2.22	0.72	HS
2	608	830-020	5	2.29	0.76	HS
2 ½	608	830-025	5	3.39	1.14	HS
3	608	830-030	5	3.57	1.20	HS
4	608	830-040	5	3.73	1.30	HS

Reducing Coupling (FPT x FPT)



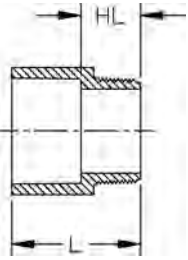
Size (inch)	P/L	Part No.	Pack Qty	L (inch)	T (inch)	T1 (inch)	Design
⅝ x ¼	608	830-052	50	1.29	0.41	0.40	HS
½ x ¼	608	830-072	50	1.45	0.53	0.40	HS
½ x ⅜	608	830-073	50	1.46	0.53	0.41	HS
¾ x ½	608	830-101	25	1.69	0.55	0.53	HS
1 x ½	608	830-130	25	1.83	0.68	0.53	HS
1 x ¾	608	830-131	25	1.88	0.68	0.55	HS
1 ¼ x ¾	608	830-167	25	1.91	0.71	0.55	HS
1 ½ x 1	608	830-211	20	2.11	0.72	0.68	HS
2 x 1 ½	608	830-251	10	2.11	0.76	0.72	HS

Female Adapter (S x FPT)



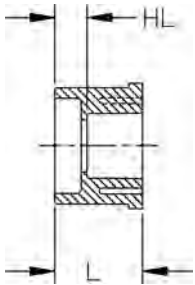
Size (inch)	P/L	Part No.	Pack Qty	HL (inch)	L (inch)	T (inch)	Design
¼	608	835-002	50	0.75	1.43	0.40	HS
⅜	608	835-003	50	0.75	1.55	0.41	HS
½	608	835-005	25	0.91	1.79	0.53	HS
¾	608	835-007	25	0.95	1.96	0.55	HS
1	608	835-010	25	1.11	2.26	0.68	HS
1 ¼	608	835-012	10	1.16	2.44	0.71	HS
1 ½	608	835-015	10	1.19	2.58	0.72	HS
2	608	835-020	5	1.23	2.74	0.76	HS
2 ½	608	835-025	5	1.75	3.50	1.14	HS
3	608	835-030	5	1.91	3.82	1.20	HS
4	608	835-040	5	2.02	4.29	1.30	HS
6	608	835-060	1	3.35	6.40	1.50	SL
8	608	835-080	1	5.00	9.00	1.75	HS
10	602	835-100	1	5.00	10.00	2.00	HS
12	A33	835-120N	1	4.50	10.50	2.13	FAB

Male Adapter (S x MPT)

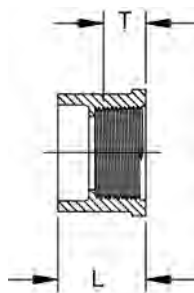


Size (inch)	P/L	Part No.	Pack Qty	HL (inch)	L (inch)	Design
½	608	836-005	50	0.93	1.86	SL
¾	608	836-007	25	1.00	2.04	HS
1	608	836-010	25	1.21	2.39	HS
1 ¼	608	836-012	15	1.29	2.56	HS
1 ½	608	836-015	10	1.32	2.72	HS
2	608	836-020	5	1.35	2.88	HS
2 ½	608	836-025	5	1.87	3.68	HS
3	608	836-030	5	2.02	3.92	HS
4	608	836-040	5	2.08	4.40	HS
6	A33	836-060N	1	3.63	6.63	FAB
8	A33	836-080N	1	3.50	7.50	FAB
10	A33	836-100N	1	4.25	9.25	FAB
12	A33	836-120N	1	4.25	10.25	FAB

Flush Style Reducer Bushing (SPG x S)

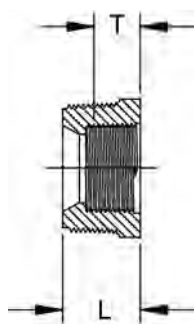


Size (inch)	P/L	Part No.	Pack Qty	HL (inch)	L (inch)	Design
½ x ¼	608	837-072	50	0.46	1.14	FLUSH
½ x ⅜	608	837-073	50	0.32	1.10	FLUSH
¾ x ½	608	837-101	50	0.40	1.29	FLUSH
1 x ½	608	837-130	50	0.54	1.42	FLUSH
1 x ¾	608	837-131	50	0.44	1.42	FLUSH
1 ¼ x ½	608	837-166	25	0.66	1.56	FLUSH
1 ¼ x ¾	608	837-167	25	0.55	1.57	FLUSH
1 ¼ x 1	608	837-168	25	0.42	1.57	FLUSH
1 ½ x ½	608	837-209	25	0.77	1.68	FLUSH
1 ½ x ¾	608	837-210	25	0.67	1.69	FLUSH
1 ½ x 1	608	837-211	25	0.55	1.68	FLUSH
1 ½ x 1 ¼	608	837-212	25	0.42	1.70	FLUSH
2 x ½	608	837-247	10	0.88	1.79	FLUSH
2 x ¾	608	837-248	10	0.78	1.81	FLUSH
2 x 1	608	837-249	10	0.66	1.81	FLUSH
2 x 1 ¼	608	837-250	10	0.56	1.82	FLUSH
2 x 1 ½	608	837-251	10	0.40	1.80	FLUSH
2 ½ x 1 ½	608	837-291	5	0.96	2.43	FLUSH
2 ½ x 2	608	837-292	5	0.55	2.13	FLUSH
3 x 1	608	837-335FB	5	1.53	3.09	BUSH
3 x 1 ¼	608	837-336FB	5	1.45	2.72	BUSH
3 x 1 ½	608	837-337	5	0.92	2.43	FLUSH
3 x 2	608	837-338	5	0.87	2.43	FLUSH
3 x 2 ½	608	837-339	5	0.39	2.23	FLUSH
4 x 2	608	837-420	5	1.15	2.72	FLUSH
4 x 3	608	837-422	5	0.77	2.76	FLUSH
6 x 3	608	837-530	2	1.41	3.66	FLUSH
6 x 4	608	837-532	2	1.13	3.66	FLUSH
8 x 6	608	837-585	2	1.56	4.66	FLUSH
10 x 4	602	837-623FB	1	3.91	6.16	BUSH
10 x 4	A33	837-623N	1	3.25	5.25	FAB
10 x 6	602	837-626	1	2.57	5.66	FLUSH
10 x 8	602	837-628	1	1.57	5.66	FLUSH
12 x 4	A33	837-663N	1	4.25	6.25	FAB
12 x 6	602	837-666FB	1	4.19	7.29	BUSH
12 x 6	A33	837-666N	1	3.25	6.25	FAB
12 x 8	602	837-668	1	2.63	6.72	FLUSH
12 x 10	602	837-670	1	1.63	6.72	FLUSH



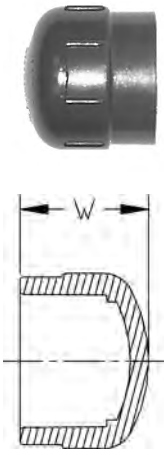
Flush Style Reducer Bushing (SPG x FPT)

Size (inch)	P/L	Part No.	Pack Qty	L (inch)	T (inch)	Design
3/8 x 1/4	608	838-052E	50	0.98	0.40	Extended
1/2 x 1/4	608	838-072	50	1.14	0.40	FLUSH
1/2 x 3/8	608	838-073	50	1.12	0.41	FLUSH
3/4 x 1/4	608	838-098	50	1.21	0.40	FLUSH
3/4 x 1/2	608	838-101	50	1.28	0.53	FLUSH
1 x 1/2	608	838-130	50	1.42	0.53	FLUSH
1 x 3/4	608	838-131	50	1.41	0.55	FLUSH
1 1/4 x 1/2	608	838-166	15	1.53	0.53	FLUSH
1 1/4 x 3/4	608	838-167	15	1.56	0.55	FLUSH
1 1/4 x 1	608	838-168	15	1.55	0.68	FLUSH
1 1/2 x 1/2	608	838-209	15	1.68	0.53	FLUSH
1 1/2 x 3/4	608	838-210	15	1.68	0.55	FLUSH
1 1/2 x 1	608	838-211	15	1.69	0.68	FLUSH
1 1/2 x 1 1/4	608	838-212	15	1.68	0.71	FLUSH
2 x 1/2	608	838-247	10	1.80	0.53	FLUSH
2 x 3/4	608	838-248	10	1.80	0.55	FLUSH
2 x 1	608	838-249	10	1.79	0.68	FLUSH
2 x 1 1/4	608	838-250	10	1.78	0.71	FLUSH
2 x 1 1/2	608	838-251	10	1.79	0.72	FLUSH
2 1/2 x 1 1/2	608	838-291	5	2.11	0.72	FLUSH
2 1/2 x 2	608	838-292	5	2.20	0.76	FLUSH
3 x 2	608	838-338	5	2.44	0.76	FLUSH
3 x 2 1/2	608	838-339	5	2.20	1.14	FLUSH
4 x 2	608	838-420	5	2.73	0.76	FLUSH
4 x 3	608	838-422	5	2.69	1.20	FLUSH



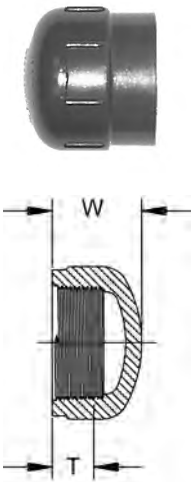
Flush Style Reducer Bushing (MPT x FPT)

Size (inch)	P/L	Part No.	Pack Qty	L (inch)	T (inch)	Style
3/8 x 1/4	608	839-052	50	0.79	0.40	FLUSH
1/2 x 1/4	608	839-072	50	0.96	0.40	FLUSH
1/2 x 3/8	608	839-073	50	0.94	0.40	FLUSH
3/4 x 1/4	608	839-098	50	1.02	0.40	FLUSH
3/4 x 3/8	608	839-099	50	1.02	0.41	FLUSH
3/4 x 1/2	608	839-101	50	1.08	0.53	FLUSH
1 x 1/4	608	839-128	25	1.22	0.40	FLUSH
1 x 1/2	608	839-130	25	1.24	0.53	FLUSH
1 x 3/4	608	839-131	25	1.27	0.55	FLUSH
1 1/4 x 1/2	608	839-166	25	12.83	0.53	FLUSH
1 1/4 x 3/4	608	839-167	25	1.29	0.55	FLUSH
1 1/4 x 1	608	839-168	25	1.30	0.68	FLUSH
1 1/2 x 3/4	608	839-210	25	1.33	0.55	FLUSH
1 1/2 x 1	608	839-211	25	1.34	0.68	FLUSH
1 1/2 x 1 1/4	608	839-212	25	1.32	0.71	FLUSH
2 x 1/2	608	839-247	10	1.43	0.53	FLUSH
2 x 3/4	608	839-248	10	1.43	0.55	FLUSH
2 x 1	608	839-249	10	1.43	0.68	FLUSH
2 x 1 1/4	608	839-250	10	1.43	0.71	FLUSH
2 x 1 1/2	608	839-251	10	1.35	0.72	FLUSH
3 x 2	608	839-338	5	2.03	0.76	FLUSH
4 x 2	608	839-420	5	2.06	0.76	FLUSH
4 x 3	608	839-422	5	2.06	1.20	FLUSH



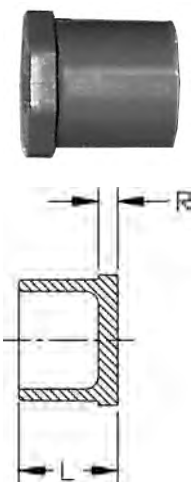
Cap (S)

Size (inch)	P/L	Part No.	Pack Qty	W (inch)	Design
¼	608	847-002	50	0.95	HS
¾	608	847-003	50	1.09	HS
½	608	847-005	50	1.29	HS
¾	608	847-007	50	1.46	HS
1	608	847-010	25	1.67	HS
1 ¼	608	847-012	15	1.88	HS
1 ½	608	847-015	10	2.09	HS
2	608	847-020	5	2.32	HS
2 ½	608	847-025	5	2.73	HS
3	608	847-030	5	3.05	HS
4	608	847-040	5	3.67	HS
6	608	847-060	2	4.96	SL
8	608	847-080	2	6.29	SL
10	602	847-100	1	7.88	SL
12	602	847-120	1	9.38	SL



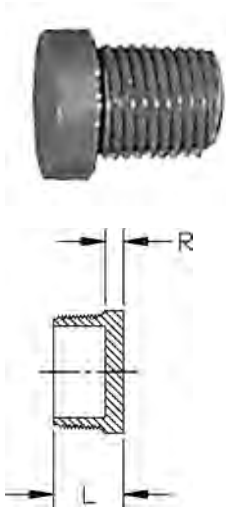
Cap (FPT)

Size (inch)	P/L	Part No.	Pack Qty	W (inch)	T (inch)	Design
¼	608	848-002	50	0.93	0.40	HS
¾	608	848-003	50	0.95	0.41	HS
½	608	848-005	50	1.16	0.53	HS
¾	608	848-007	25	1.24	0.55	HS
1	608	848-010	25	1.50	0.68	HS
1 ¼	608	848-012	15	1.61	0.71	HS
1 ½	608	848-015	10	1.66	0.72	HS
2	608	848-020	5	1.84	0.76	HS
2 ½	608	848-025	5	2.56	1.14	HS
3	608	848-030	5	2.83	1.20	HS
4	608	848-040	5	3.13	1.30	HS



Plug (SPG)

Size (inch)	P/L	Part No.	Pack Qty	L (inch)	R (inch)
½	608	849-005	50	1.09	0.20
¾	608	849-007	50	1.26	0.23
1	608	849-010	25	1.41	0.25
1 ½	608	849-015	20	1.71	0.31
2	608	849-020	10	1.90	0.38
4	608	849-040	5	2.64	0.39

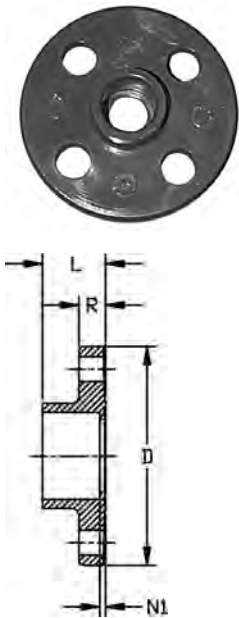


Plug (MPT)

Size (inch)	P/L	Part No.	Pack Qty	L (inch)	R (inch)
¼	608	850-002	50	0.81	0.22
¾	608	850-003	50	0.83	0.22
½	608	850-005	50	0.97	0.22
¾	608	850-007	50	1.04	0.25
1	608	850-010	25	1.25	0.27
1 ¼	608	850-012	25	1.32	0.31
1 ½	608	850-015	20	1.38	0.34
2	608	850-020	10	1.46	0.40
2 ½	608	850-025	10	1.95	0.38
3	608	850-030	5	2.00	0.38
4	608	850-040	5	2.15	0.39
6	A33	850-060N	1	2.00	0.75
8	A33	850-080N	1	2.00	0.75
10	A33	850-100N	1	2.00	0.75
12	A33	850-120N	1	2.00	0.75

Flange - One Piece (S)

150 psi @ 73°F (10.3 bar @ 22.7°C)
 HC = Honeycomb (Front)
 WEB = Webbed (Back)

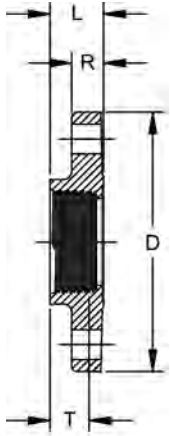


Size (inch)	P/L	Part No.	Pack Qty	# holes	Bolt Dia. (inch)	bolt cir. dia. (inch)	D (inch)	L (inch)	N1 (inch)	R (inch)	Design
½	608	851-005	5	4	½	2.38	3.50	1.03	0.15	0.44	HC
¾	608	851-007	5	4	½	2.75	3.88	1.21	0.19	0.51	SOLID
1	608	851-010	5	4	½	3.13	4.25	1.39	0.13	0.55	HC
1 ¼	608	851-012	5	4	½	3.50	4.63	1.42	0.16	0.62	HC
1 ½	608	851-015	5	4	½	3.88	5.00	1.54	0.16	0.68	HC
2	608	851-020	5	4	¾	4.75	6.00	1.77	0.16	0.75	HC
2 ½	608	851-025	5	4	¾	5.50	7.00	2.01	0.19	0.80	HC
3	608	851-030	5	4	¾	6.00	7.50	2.20	0.31	0.98	WEB
4	608	851-040	5	8	¾	7.50	9.00	2.55	0.22	1.24	WEB
6	608	851-060	2	8	¾	9.50	11.00	3.86	0.34	1.32	HC
8	608	851-080	2	8	¾	11.75	13.50	4.85	0.35	1.37	HC



Flange - One Piece (FPT)

150 psi @ 73°F (10.3 bar @ 22.7°C)
 HC = Honeycomb (Front)
 WEB = Webbed (Back)

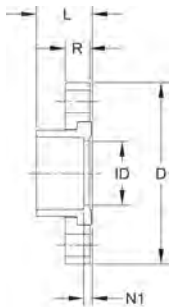


Size (inch)	P/L	Part No.	Pack Qty	# holes	Bolt Dia. (inch)	bolt cir. dia. (inch)	D (inch)	L (inch)	T (inch)	R (inch)	Design
½	608	852-005	5	4	½	2.38	3.50	0.94	0.53	0.44	HC
¾	608	852-007	5	4	½	2.75	3.88	0.95	0.55	0.51	HC
1	608	852-010	5	4	½	3.13	4.25	1.13	0.68	0.55	HC
1 ¼	608	852-012	5	4	½	3.50	4.63	1.19	0.71	0.63	HC
1 ½	608	852-015	5	4	½	3.88	5.00	1.21	0.72	0.68	HC
2	608	852-020	5	4	¾	4.75	6.00	1.23	0.76	0.75	HC
2 ½	608	852-025	5	4	¾	5.50	7.00	1.23	1.14	0.80	HC
3	608	852-030	5	4	¾	6.00	7.50	1.88	1.20	0.98	WEB
4	608	852-040	5	8	¾	7.50	9.00	1.99	1.30	1.24	WEB



Flange - Van Stone (S)

3" - 12" have Steel Ring
 150 psi @ 73°F (10.3 bar @ 22.7°C)
 14" & 16" 100 psi @ 73°F (6.9 bar @ 22.7°C)
 HC = Honeycomb (Front)



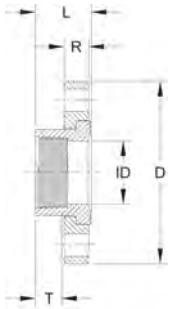
Size (inch)	P/L	Part No.
½	608	854-005
¾	608	854-007
1	608	854-010
1 ¼	608	854-012
1 ½	608	854-015
2	608	854-020
2 ½	608	854-025
3	608	854-030
4	608	854-040
6	608	854-060
8	608	854-080
10	602	854-100
12	602	854-120

Size (inch)	Size (inch)	Pack Qty	# holes	Bolt Dia. (inch)	bolt cir. dia. (inch)	D (inch)	L (inch)	N1 (inch)	R (inch)	ID (inch)	Design
½	½	5	4	½	2.38	3.50	1.03	0.11	0.57	0.63	HC
¾	¾	5	4	½	2.75	3.88	1.15	0.13	0.58	0.84	HC
1	1	5	4	½	3.13	4.25	1.38	0.11	0.66	1.06	HC
1 ¼	1 ¼	5	4	½	3.50	4.63	1.45	0.14	0.69	1.40	HC
1 ½	1 ½	5	4	½	3.88	5.00	1.59	0.15	0.76	1.61	HC
2	2	5	4	¾	4.75	6.00	1.76	0.20	0.82	2.10	HC
2 ½	2 ½	5	4	¾	5.50	7.00	2.05	0.22	0.98	2.50	HC
3	3	5	4	¾	6.00	7.50	2.25	0.30	1.02	3.11	HC
4	4	5	8	¾	7.50	9.00	2.65	0.34	1.11	4.07	HC
6	6	2	8	¾	9.50	11.00	3.50	0.48	1.27	6.13	HC
8	8	2	8	¾	11.75	13.50	4.63	0.50	1.73	8.02	HC
10	10	2	12	¾	14.25	16.00	5.63	0.50	1.73	10.09	HC
12	12	2	12	¾	17.00	19.00	6.69	0.56	1.73	11.98	HC



Flange - Van Stone (FPT)

3" - 12" have Steel Ring
 150 psi @ 73°F (10.3 bar @ 22.7°C)
 HC = Honeycomb (Front)

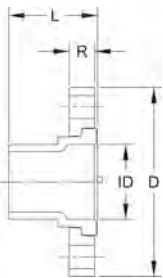


Size (inch)	P/L	Part No.	Pack Qty	# holes	Bolt Dia. (inch)	bolt cir. dia. (inch)	D (inch)	L (inch)	T (inch)	R (inch)	ID (inch)	Design
½	608	855-005	5	4	½	2.38	3.50	1.03	0.53	0.57	0.63	HC
¾	608	855-007	5	4	½	2.75	3.88	1.15	0.55	0.58	0.83	HC
1	608	855-010	5	4	½	3.13	4.25	1.38	0.68	0.66	1.05	HC
1 ¼	608	855-012	5	4	½	3.50	4.63	1.45	0.71	0.69	1.38	HC
1 ½	608	855-015	5	4	½	3.88	5.00	1.59	0.72	0.76	1.60	HC
2	608	855-020	5	4	¾	4.75	6.00	1.76	0.76	0.82	2.08	HC
2 ½	608	855-025	5	4	¾	5.50	7.00	2.05	1.14	0.98	2.46	HC
3	608	855-030	5	4	¾	6.00	7.50	2.25	1.20	1.02	3.12	WEB
4	608	855-040	5	8	¾	7.50	9.00	2.65	1.30	1.11	4.07	WEB



Flange - Van Stone (SPG)

3" - 12" have Steel Ring
 150 psi @ 73°F (10.3 bar @ 22.7°C)
 HC = Honeycomb (Front)

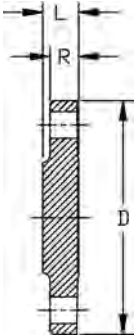


Size (inch)	P/L	Part No.	Pack Qty	# holes	Bolt Dia. (inch)	bolt cir. dia. (inch)	D (inch)	L (inch)	R (inch)	ID (inch)	Design
½	608	856-005	5	4	½	2.38	3.50	1.65	0.57	0.84	HC
¾	608	856-007	5	4	½	2.75	3.88	1.78	0.58	1.05	HC
1	608	856-010	5	4	½	3.13	4.25	2.02	0.66	1.32	HC
1 ¼	608	856-012	5	4	½	3.50	4.63	2.20	0.69	1.66	HC
1 ½	608	856-015	5	4	½	3.88	5.00	2.40	0.76	1.90	HC
2	608	856-020	5	4	¾	4.75	6.00	2.72	0.82	2.37	HC
2 ½	608	856-025	5	4	¾	5.50	7.00	3.19	0.98	2.87	HC
3	608	856-030	5	4	¾	6.00	7.50	3.52	1.02	3.50	HC
4	608	856-040	5	8	¾	7.50	9.00	4.02	1.11	4.50	HC
6	608	856-060	2	8	¾	9.50	11.00	5.00	1.37	6.62	HC
8	608	856-080	1	8	¾	11.75	13.50	6.85	1.73	8.63	HC
10	602	856-100	1	12	¾	14.25	16.00	8.33	1.73	10.75	HC
12	602	856-120	1	12	¾	17.00	19.00	9.54	1.73	12.72	HC



Flange (Blind)

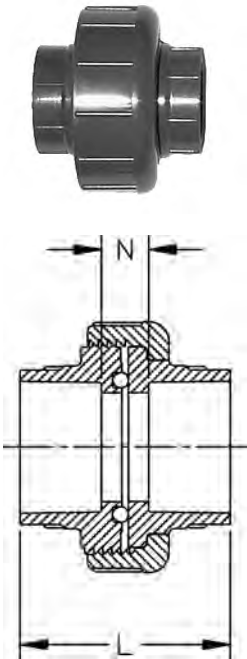
- 1/2" - 8" 150 psi @ 73°F (10.3 bar @ 22.7°C)
- 10", 12", 14" & 16" 50 psi @ 73°F (3.5 bar @ 22.7°C)
- HC = Honeycomb (Front)



Size (inch)	P/L	Part No.	Pack Qty	# holes	Bolt Dia. (inch)	bolt cir. dia. (inch)	D (inch)	L (inch)	R (inch)	Design
1/2	608	853-005	5	4	1/2	2.38	3.50	0.50	0.43	HC
3/4	608	853-007	5	4	1/2	2.75	3.88	0.50	0.44	HC
1	608	853-010	5	4	1/2	3.13	4.25	0.60	0.57	HC
1 1/4	608	853-012	5	4	1/2	3.50	4.63	0.63	0.56	HC
1 1/2	608	853-015	5	4	1/2	3.88	5.00	0.82	0.71	HC
2	608	853-020	5	4	3/4	4.75	6.00	0.92	0.74	HC
2 1/2	608	853-025	5	4	3/4	5.50	7.00	0.96	0.78	HC
3	608	853-030	5	4	3/4	6.00	7.50	1.03	0.89	WEB
4	608	853-040	5	8	3/4	7.50	9.00	1.35	1.12	HC
6	608	853-060	2	8	3/4	9.50	11.00	1.49	1.27	HC
8	608	853-080	2	8	3/4	11.75	13.50	1.63	1.45	HC
10	A33	853-100N	1	12	7/8	14.25	16.00	1.00	1.00	SOLID
12	A33	853-120N	1	12	7/8	17.00	19.00	1.00	1.00	SOLID

Union Type 375 (S x S)

- 235 psi @ 73°F (16.2 bar @ 22.7°C)

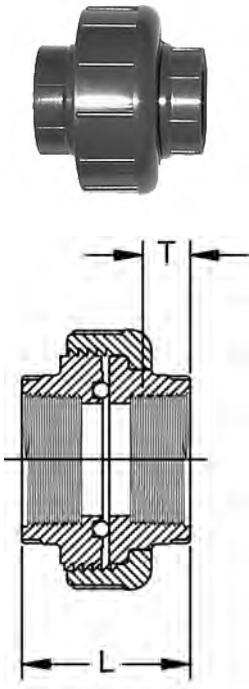


Size (inch)	P/L	EPDM Part No.	FPM Part No.	Pack Qty	L (inch)	N (inch)
1/2	608	897-375-005	857-375-005	25	2.58	0.80
3/4	608	897-375-007	857-375-007	10	2.82	0.82
1	608	897-375-010	857-375-010	5	3.14	0.88
1 1/4	608	897-375-012	857-375-012	5	3.49	0.99
1 1/2	608	897-375-015	857-375-015	5	3.70	0.95
2	608	897-375-020	857-375-020	2	4.11	1.11

Union Type 375 (FPT X FPT)

- 235 psi @ 73°F (16.2 bar @ 22.7°C)

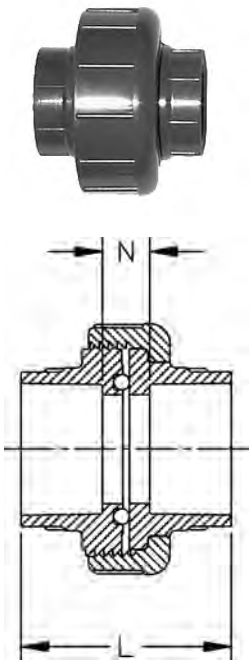
Size (inch)	P/L	EPDM Part No.	FPM Part No.	Pack Qty	L (inch)	T (inch)
½	608	898-375-005	858-375-005	25	2.03	0.53
¾	608	898-375-007	858-375-007	10	2.11	0.55
1	608	898-375-010	858-375-010	5	2.56	0.68
1 ¼	608	898-375-012	858-375-012	5	2.79	0.71
1 ½	608	898-375-015	858-375-015	5	2.72	0.72
2	608	898-375-020	858-375-020	2	2.89	0.76



Union (S x S)

- 150 psi @ 73°F (10.3 bar @ 22.7°C)

Size (inch)	P/L	EPDM Part No.	FPM Part No.	Pack Qty	L (inch)	N (inch)
3	608	897-030	857-030	1	4.74	0.96
4	608	897-040	857-040	1	5.62	1.11

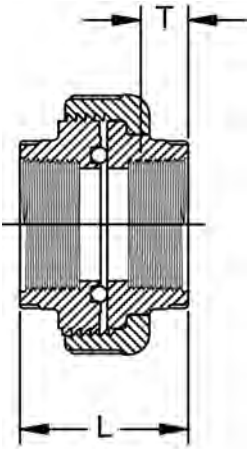




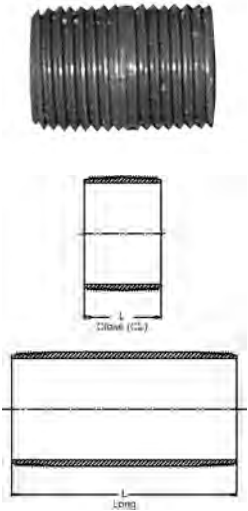
Union (FPT X FPT)

150 psi @ 73°F (10.3 bar @ 22.7°C)

Size (inch)	P/L	EPDM Part No.	FPM Part No.	Pack Qty	L (inch)	T (inch)
3	608	898-030	858-030	1	4.75	1.33
4	608	898-040	858-040	1	5.71	1.78

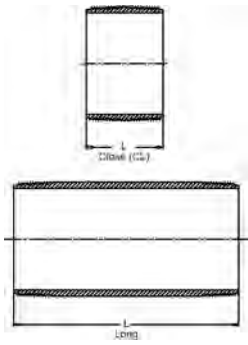


Nipple (MPT x MPT)



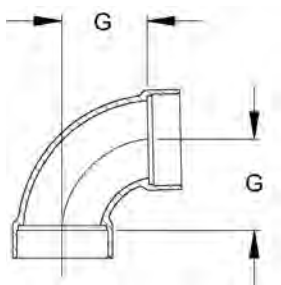
Size (inch)	P/L	Part No.	Pack Qty	L (inch)
1/2 x CL	608	861-077	50	1.13
1/2 x 2	608	861-079	50	2.00
1/2 x 3	608	861-081	50	3.00
1/2 x 4	608	861-082	50	4.00
1/2 x 5	608	861-083	50	5.00
1/2 x 6	608	861-084	50	6.00
1/2 x 8	608	861-086	50	8.00
1/2 x 10	608	861-087	50	10.00
1/2 x 12	608	861-088	50	12.00
3/4 x CL	608	861-104	25	1.38
3/4 x 2	608	861-020	25	2.00
3/4 x 3	608	861-106	25	3.00
3/4 x 4	608	861-107	25	4.00
3/4 x 5	608	861-108	25	5.00
3/4 x 6	608	861-109	25	6.00
3/4 x 8	608	861-110	25	8.00
3/4 x 10	608	861-111	25	10.00
3/4 x 12	608	861-112	25	12.00
1 x CL	608	861-133	25	1.50
1 x 2	608	861-134	25	2.00
1 x 3	608	861-135	25	3.00
1 x 4	608	861-136	25	4.00
1 x 5	608	861-137	25	5.00
1 x 6	608	861-138	25	6.00
1 x 8	608	861-139	25	8.00
1 x 10	608	861-140	25	10.00
1 x 12	608	861-141	25	12.00
1 1/4 x CL	608	861-170	25	1.63
1 1/4 x 2	608	861-171	25	2.00
1 1/4 x 3	608	861-172	25	3.00
1 1/4 x 4	608	861-173	25	4.00
1 1/4 x 5	608	861-174	25	5.00
1 1/4 x 6	608	861-175	25	6.00
1 1/4 x 8	608	861-176	25	8.00
1 1/4 x 10	608	861-177	25	10.00

table continued on the next page



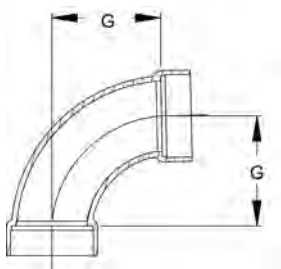
Size (inch)	P/L	Part No.	Pack Qty	L (inch)
1 1/4 x 12	608	861-178	25	12.00
1 1/2 x CL	608	861-213	25	1.75
1 1/2 x 2	608	861-214	25	2.00
1 1/2 x 3	608	861-215	25	3.00
1 1/2 x 4	608	861-216	25	4.00
1 1/2 x 5	608	861-217	25	5.00
1 1/2 x 6	608	861-218	25	6.00
1 1/2 x 8	608	861-219	25	8.00
1 1/2 x 10	608	861-220	25	10.00
1 1/2 x 12	608	861-221	25	12.00
2 x CL	608	861-251	25	2.00
2 x 2 1/2	608	861-252	25	2.50
2 x 3	608	861-253	25	3.00
2 x 4	608	861-254	25	4.00
2 x 5	608	861-255	25	5.00
2 x 6	608	861-256	25	6.00
2 x 8	608	861-257	25	8.00
2 x 10	608	861-258	25	10.00
2 x 12	608	861-259	25	12.00
2 1/2 x CL	608	861-291	5	2.50
2 1/2 x 3	608	861-292	5	3.00
2 1/2 x 4	608	861-295	5	4.00
2 1/2 x 5	608	861-296	5	5.00
2 1/2 x 6	608	861-297	5	6.00
2 1/2 x 8	608	861-298	5	8.00
2 1/2 x 10	608	861-299	5	10.00
2 1/2 x 12	608	861-300	5	12.00
3 x CL	608	861-338	5	2.63
3 x 3	608	861-340	5	3.00
3 x 4	608	861-341	5	4.00
3 x 5	608	861-342	5	5.00
3 x 6	608	861-343	5	6.00
3 x 8	608	861-344	5	8.00
3 x 10	608	861-345	5	10.00
3 x 12	608	861-346	5	12.00
4 x CL	608	861-422	5	2.88
4 x 4	608	861-423	5	4.00
4 x 5	608	861-425	5	5.00
4 x 6	608	861-426	5	6.00
4 x 8	608	861-427	5	8.00
4 x 10	608	861-428	5	10.00
4 x 12	608	861-429	5	12.00

Schedule 80 PVC DWV Fittings



1/4 Bend Short Sweep (SxS)

Size (inch)	P/L	Part No.	Pack Qty	G (inch)
1 1/2	608	37R482501	4	1.75
2	608	37R482502	4	2.31
3	608	37R482503	1	3.06
4	608	37R482504	1	3.88



1/4 Bend Long Sweep (SxS) - FAB

Size (inch)	P/L	Part No.	Pack Qty	G (inch)
1 1/2	608	37R462701	4	4.13
2	608	37R462702	4	4.75
3	608	37R462703	1	7.00
4	608	37R462704	1	9.00



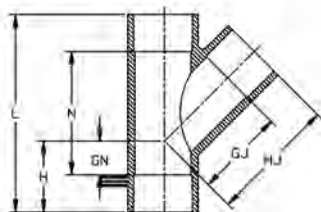
45° Wye (S x S x S)

1-1/2" - 2" 235 psi @ 72°F (16.2 bar @ 22.7°C)

3" - 6" 150 psi @ 72°F (10.3 bar @ 22.7°C)

8" & Larger 100 psi @ 72°F (6.9 bar @ 22.7°C)

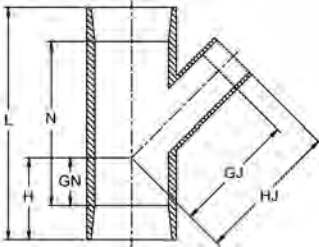
Size (inch)	P/L	Part No.	Pack Qty	GJ (inch)	GN (inch)	H (inch)	HJ (inch)	L (inch)	N (inch)	Design
1 1/2	608	870-015	20	2.41	0.69	2.06	3.75	5.81	3.06	SL
2	608	870-020	10	3.63	1.38	2.88	5.13	8.02	5.00	SL
3	608	870-030	4	5.00	1.87	3.77	6.90	10.46	6.65	SL
4	608	870-040	4	6.38	1.88	4.20	8.70	12.91	8.25	SL
6	608	870-060	2	8.50	1.81	4.86	11.59	16.50	10.39	HS
8	608	870-080	1	11.25	2.06	6.08	15.25	21.34	13.31	HS
10	A33	875-100N	1	19.75	5.50	10.50	24.75	31.75	21.75	FAB
12	A33	875-120N	1	22.63	6.50	12.50	28.63	37.50	25.50	FAB



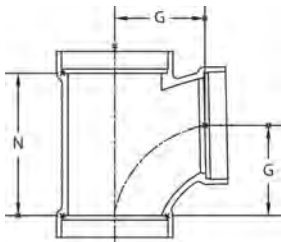


Reducing 45° Wye (S x S x S)

2" 235 psi @ 72°F (16.2 bar @ 22.7° C)
 3" - 6" 150 psi @ 72°F (10.3 bar @ 22.7°C)
 8" 100 psi @ 72°F (6.9 bar @ 22.7°C)

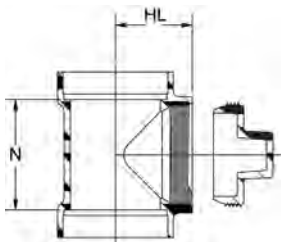


Size (inch)	P/L	Part No.	Pack Qty	GJ (inch)	GN (inch)	H (inch)	HJ (inch)	L (inch)	N (inch)	Design
2 x 1 1/2	608	870-251FB	10	4.03	1.38	2.88	5.43	8.02	5.00	BUSH
3 x 1 1/2	608	870-337FB	4	5.92	1.87	3.77	7.43	10.46	6.65	BUSH
3 x 2	608	870-338FB	4	5.87	1.87	3.77	7.43	10.46	6.65	BUSH
4 x 2	608	870-420FB	4	7.53	1.88	4.20	9.10	12.91	8.25	BUSH
4 x 3	608	870-422FB	4	7.15	1.88	4.20	9.14	12.91	8.25	BUSH
6 x 2	608	870-528FB	2	8.33	1.87	4.91	9.90	16.50	10.39	BUSH
6 x 3	608	870-530FB	2	9.95	1.87	4.91	12.09	16.50	10.39	BUSH
6 x 4	608	870-532	2	7.18	1.87	4.91	9.45	16.50	10.39	HS
8 x 4	608	870-582	1	9.53	0.38	4.39	11.79	16.03	7.63	HS
8 x 6	608	870-585FB	1	12.62	2.06	6.06	15.72	21.25	13.31	BUSH
10 x 4	A33	875-623N	1	14.00	1.25	6.25	16.00	23.00	13.00	FAB
10 x 6	A33	875-626N	1	16.13	2.75	7.75	19.13	26.00	16.00	FAB
10 x 8	A33	875-628N	1	17.50	4.00	9.00	21.50	28.75	18.75	FAB
12 x 4	A33	875-663N	1	15.50	0.50	6.50	17.50	25.75	13.75	FAB
12 x 6	A33	875-666N	1	17.50	2.00	8.00	20.50	28.68	16.68	FAB
12 x 8	A33	875-668N	1	19.00	3.50	9.50	23.00	31.50	19.50	FAB
12 x 10	A33	875-670N	1	21.25	5.00	11.00	26.25	34.50	22.50	FAB



Sanitary Tee (SxSxS)

Size (inch)	P/L	Part No.	Pack Qty	G (inch)	N (inch)
1 1/2	608	37R461501	5	1.75	2.75
2	608	37R461502	5	2.31	3.69
3	608	37R461503	5	3.06	4.88
4	608	37R461504	5	3.88	6.13



Cleanout Tee with Plug (SxSxFPT)

Size (inch)	P/L	Part No.	Pack Qty	HL (inch)	N (inch)
1 1/2	608	37R461101	2	2.07	1.80
2	608	37R461102	2	2.35	2.32
3	608	37R461103	2	3.51	3.63
4	608	37R461104	2	4.07	4.25

Schedule 80 PVC Metal Transition Fittings



Metal Union End Connectors Type 375 (316 SS)

150 psi @ 73°F (10.3 bar @ 22.7°C)
Union Sold Separately

Size (inch)	P/L	Part No.	Pack Qty
½	A35	37X003314	1
¾	A35	37X003315	1
1	A35	37X003316	1
1 ¼	A35	37X003317	1
1 ½	A35	37X003318	1
2	A35	37X003319	1

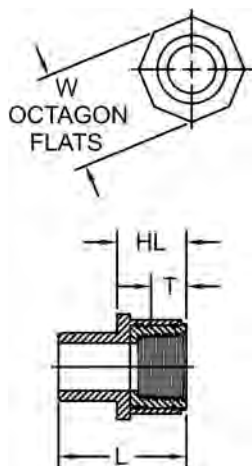
PVC-to-Brass Transition Fittings (SPG x FPT)



150 psi @ 73°F (10.3 bar @ 22.7°C)

Size (inch)	P/L	Part No.	Pack Qty	HL (inch)	L (inch)	T (inch)	W (inch)
½	A35	878-005BR	25	1.02	1.76	0.53	1.25
¾	A35	878-007BR	15	1.09	2.08	0.55	1.50
1	A35	878-010BR	15	1.33	2.45	0.68	1.88
1 ¼	A35	878-012BR	15	1.39	2.51	0.71	2.25
1 ½	A35	878-015BR	10	1.45	2.76	0.72	2.56
2	A35	878-020BR	5	1.44	2.82	0.76	3.31

PVC-to-316 SS Transition Fittings (SPG x FPT)



150 psi @ 73°F (10.3 bar @ 22.7°C)

Size (inch)	P/L	Part No.	Pack Qty	HL (inch)	L (inch)	T (inch)	W (inch)
½	A35	878-005SS	25	1.02	1.76	0.53	1.25
¾	A35	878-007SS	15	1.09	2.08	0.55	1.50
1	A35	878-010SS	15	1.33	2.45	0.68	1.88
1 ¼	A35	878-012SS	15	1.39	2.51	0.71	2.25
1 ½	A35	878-015SS	10	1.45	2.76	0.72	2.56
2	A35	878-020SS	5	1.44	2.82	0.76	3.31

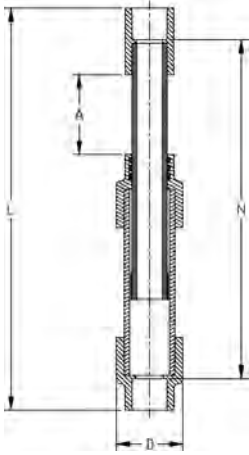
Schedule 80 PVC Expansion Joints



Expansion Joint 6" Travel (S x S)

To order SxSPG add "P" to end of part number.
To order FxF add "F" to end of part number.

Size (inch)	P/L	EPDM Part No.	FPM Part No.	A (inch)	D (inch)	L (inch)	N (inch)
1/2	34	826-005X6	836-005X6	3.00	1.85	13.93	12
3/4	34	826-007X6	836-007X6	3.00	2.23	14.40	12
1	34	826-010X6	836-010X6	3.00	2.50	15.02	13
1 1/4	34	826-012X6	836-012X6	3.00	2.50	15.81	13
1 1/2	34	826-015X6	836-015X6	3.00	3.50	16.08	13
2	34	826-020X6	836-020X6	3.00	4.39	18.10	15
3	34	826-030X6	836-030X6	3.00	5.53	19.83	16
4	34	826-040X6	836-040X6	3.00	7.93	27.56	23
6	34	826-060X6	836-060X6	3.00	9.97	27.88	22



Expansion Joint 12" Travel (S x S)

To order SxSPG add "P" to end of part number.
To order FxF add "F" to end of part number.

Size (inch)	P/L	EPDM Part No.	FPM Part No.	A (inch)	D (inch)	L (inch)	N (inch)
1/2	34	826-005X12	836-005X12	6.00	1.85	22.93	21.06
3/4	34	826-007X12	836-007X12	6.00	2.23	23.40	21.46
1	34	826-010X12	836-010X12	6.00	2.50	24.02	21.58
1 1/4	34	826-012X12	836-012X12	6.00	2.50	24.81	22.05
1 1/2	34	826-015X12	836-015X12	6.00	3.50	25.08	22.13
2	34	826-020X12	836-020X12	6.00	4.39	27.10	23.88
3	34	826-030X12	836-030X12	6.00	5.53	28.83	24.79
4	34	826-040X12	836-040X12	6.00	7.93	36.56	32.01
6	34	826-060X12	836-060X12	6.00	9.97	36.88	30.75

Marine Joining Accessories



Purple Primer w/Optical Brightner

- Must be purchased in full pack qty

<u>Size</u>	<u>P/L</u>	<u>Part No.</u>	<u>Pack Qty</u>
Quart	607	37X004205	4



Gray Cement w/Optical Brightner

- Must be purchased in full pack qty

<u>Size</u>	<u>P/L</u>	<u>Part No.</u>	<u>Pack Qty</u>
Quart	607	37X004111	4

