

Product Range

Custom products

Innovations to build your world



**Custom Product
Design**

Table of contents

Introduction	4
Tailored innovation, inspired by you	4
Custom Design and Prefabrication	5
Global network	6
Designed, built, and tested	8
Product Range - Customized products and parts	10
Adapterset	11
Lock System for Valves	12
Ball Valve	12
Flow Measurement Fitting	12
ELGEF Transition Union	13
Expansion Joint	14
Sanipex MT Ball Valve	15
COOL-FIT Fittings	16
Angled Adaptor for Process Automation	17
Wafer Vent Fitting	18
Instrument Fitting with Sanitary Adaptor	19
Sampling Valve Assembly (160-315mm)	19
Drain/Sampling Assembly	20
Low Point Drain Assembly (160-315mm)	22

Product Range - Customized solutions**25****Spectacle Blind Flange****25****Injection Tee****25****Saddles****25****Valves****26****Handle Extensions****27****Headers and Manifolds****28****Fittings****28****Reducers****29****Strainer Assembly****29****Splash Guard****29****Bends****30****Sensor Replacing Assembly****30****Fixpoint Double Containment****30**

Tailored innovation, inspired by you

GF Piping Systems considers the diversity of its customers and their requirements as a challenge and opportunity at the same time. This is where the key to individual benefit lies. With the individual needs and your application in focus, customizing teams develop the very solution that fits best.

An experienced partner

Nowadays, roughly 55% of construction projects are late, with an average overrun of about 30% of the original duration. For owners, a delay means loss of revenue through lack of production facilities, rentable space or dependence on present facilities. For contractors, it means higher overhead costs because of a longer work period, higher material costs through inflation, or labor cost increases. This, without mentioning the claims that result from delays, which cost a substantial amount of money to the faulty part.

There is a strong connection between delays, failures and ineffective performance of contractors on site. Aside from delays, the next major risk projects are facing, emerge from the costs of non-quality, which we estimate to go beyond 10%, as a combination of direct costs (several studies consider to

be between 4% and 6% of the total project costs and in indirect costs (that go up to a 72% out of the direct costs).

Certified quality management supports customers in reducing their exposure to these risks. Mitigate the risk, limit the on-site works to the strictly necessary, and ensure on time completion: that's what the customizing expertise offered by GF Piping Systems is about.

**Reduce the scope of on-site works,
to fabricate as much as possible in a
controlled environment, increasing
quality and reducing delivery time.**

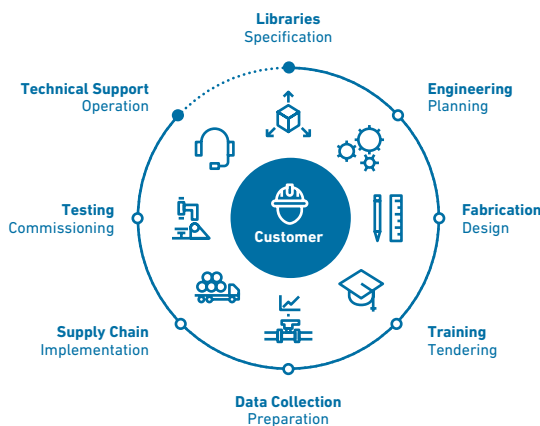




Custom Design and Prefabrication

Specialized ideas

Specialized Solutions



With Specialized Solutions, the global leader GF Piping Systems provides project support every step of the way to achieve construction excellence.

Custom Design & Prefabrication Solutions offers the opportunity to address a customer's specific needs during the planning and design phase, within the Specialized Solutions range by GF Piping Systems.

GF Piping Systems supports the conception and design process of a project from the outset to ensure that a sustainable and efficient solution is achieved. Whether in the selection of the right plastic solution from our extensive portfolio, the management of complex sub-projects, or quality control based on recognized international standards - you can benefit from Specialized Solutions for all application areas and references from a wide range of industries across the entire product range.

Benefits for your business

1

Metal-to-plastic conversion

GF Piping Systems supports customers not only with specialized knowledge about plastic installations but also with custom parts that meet the most particular needs of your pipe application.

2

Meeting customer's project challenges

With experience in all types of piping system applications, GF Piping Systems' customization teams are very familiar with most of the challenges our customers face in their projects and are continuously developing tailor-made solutions for those parts of the installation, where the regular piping systems product portfolio does not meet the problems of each project.

3

First class quality ensured

Develop tailor-made factory tested products that comply with your standard and market regulations.

4

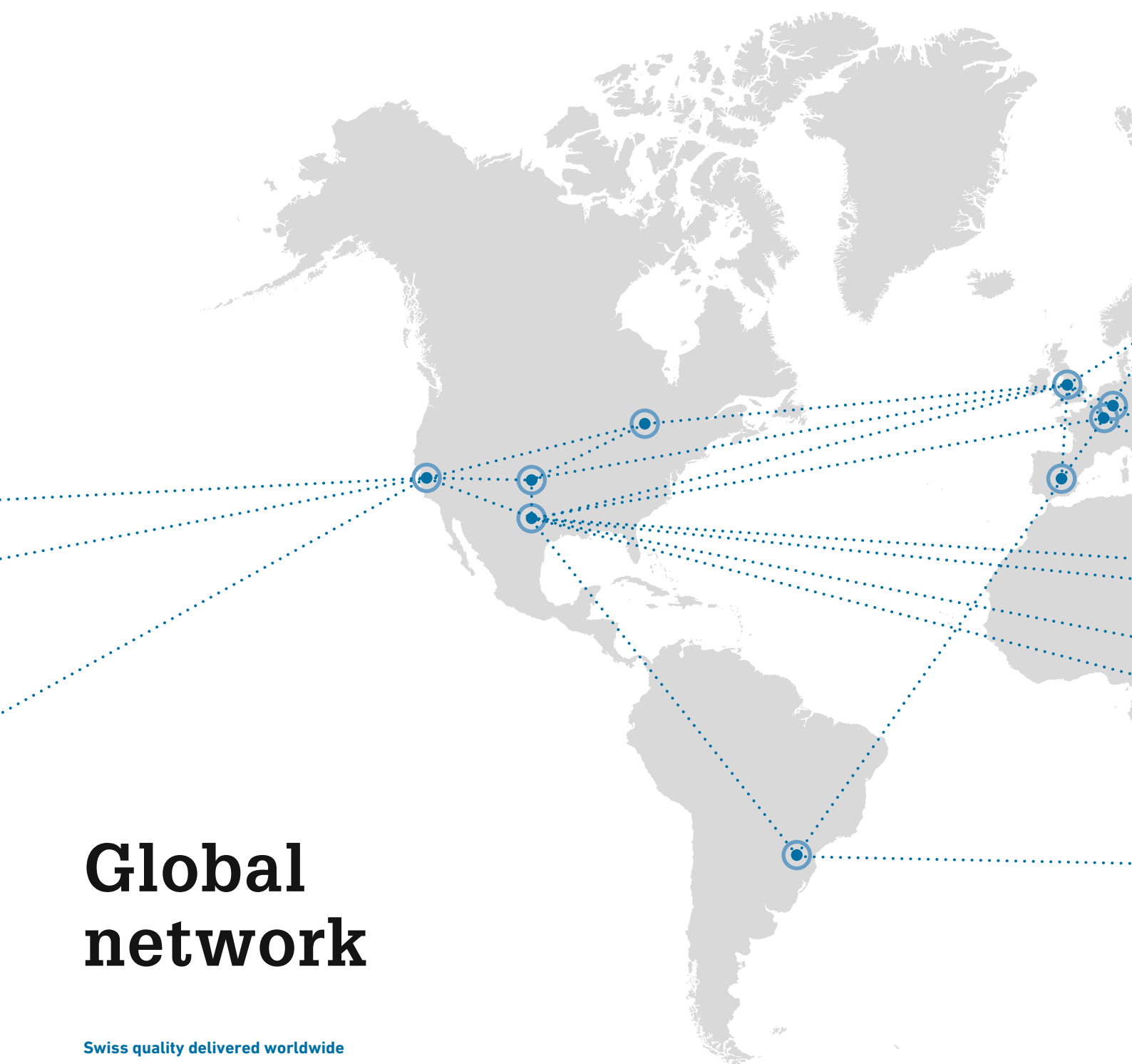
Global one-stop shopping

Reduce interfaces and friction with suppliers.

5

Global network or workshops

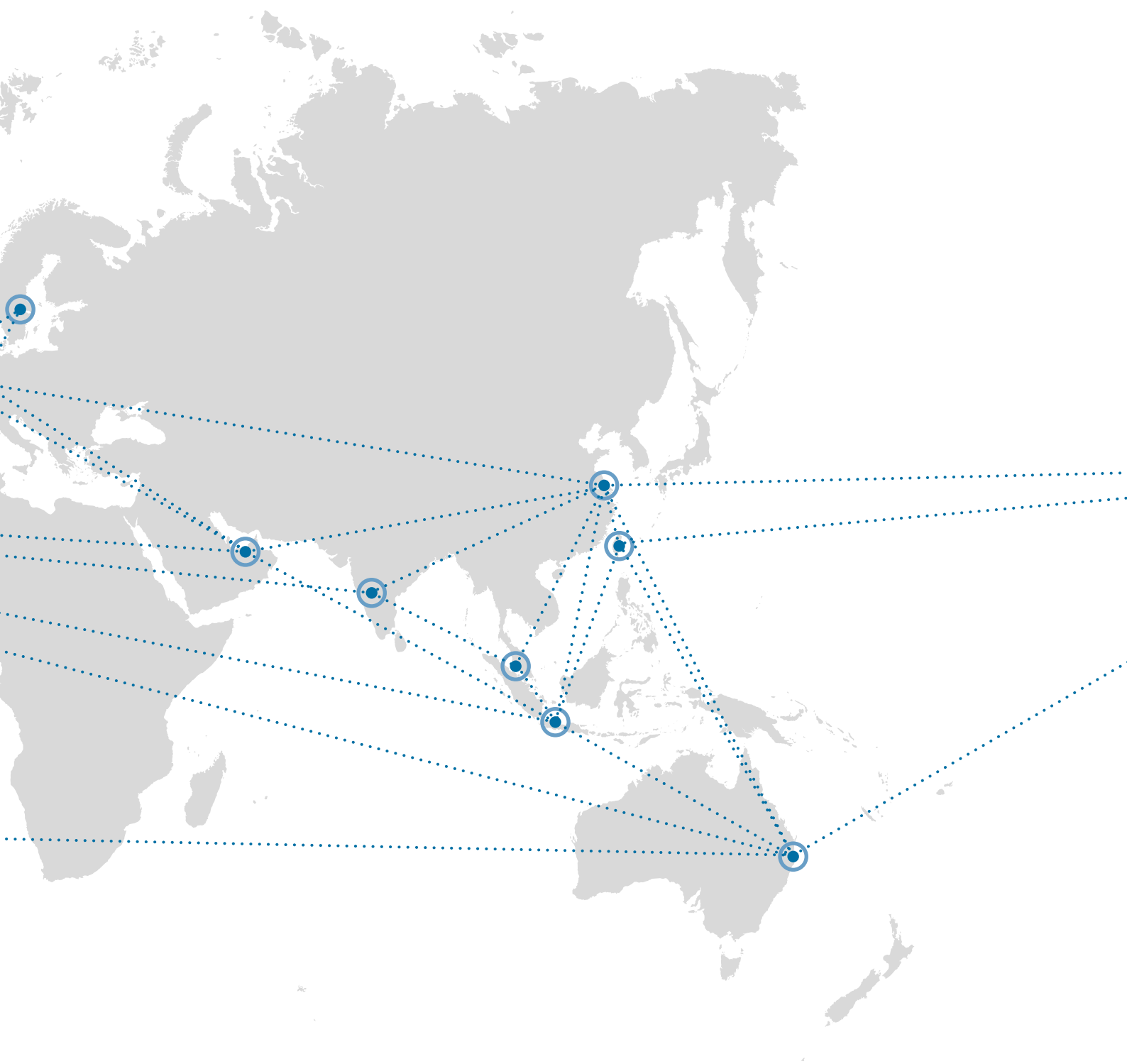
With more than 12 locations around the world, our customization team shares knowledge and expertise, aligns and optimizes the design of the final parts to be produced, and fabricates them as close to the customer's project as possible but always under the same standards of quality.



Global network

Swiss quality delivered worldwide

Quality standards are set by GF Piping Systems' headquarters in Switzerland, and we follow the same standards in our facilities around the world. It is our philosophy and our practice. We apply ISO 9001 certification standards. As an extra level of quality, we provide QA/QC inspection to everything that comes into and goes out of a GF Piping Systems fabrication shop.



Customized products

Designed, built, and tested to meet your challenges

GF Piping Systems' solutions for the fabrication of custom products always follow the same process, regardless if we refer to individual parts and sub-assemblies, such as spool pieces and headers, or complete skid-mounted systems for rapid installation on the construction site. This process starts with planning and continues with engineering, designing, and fabricating, all the way until delivering custom-made piping components right into the customer project.

A formula to ensure success

Quality is ensured in all piping components, also the custom ones

This promise has been a constant that GF Piping Systems maintains over the years; that's why GF is a synonym for quality in the market. It is our philosophy and practice: Follow ISO 9001 certification standards in manufacturing and fabrication processes, all documented, certified, and followed. We are committed to quality, and a clear benefit of off-site prefabrication is underscored by the fact that everything that comes into and goes out of a GF Piping Systems fab shop is 100% QA/QC inspected.



Product Range

Customized products and parts

In generic pipe applications that are applied to many industries -such as process water cooling or reverse osmosis- there is an intensive need for custom-made products to enable installation companies to deliver a full-plastic solution in their projects.

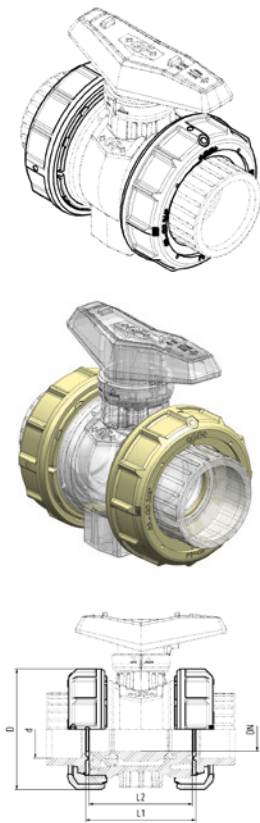
In GF Piping Systems we are familiar with the everyday needs of products and parts that our customer has, but that is not covered in the regular product portfolio from the company. Therefore we have standardized the customization process of the more recurrent items required by the markets we supply.

Adapterset

Adapterset 346 - 546

- Change an old 346BV with a 546BV in an existing system.
- PVC-U, PVC-C, PP-H, ABS & PVDF
- Adapterset for BVs from other competitors to 546 on request

*Parts are only orderable with their codes through the Customizing Department



PVC-U							
d (mm)	Inch (inch)	DN (mm)	EPDM Code	FKM Code	D (mm)	L1 (mm)	L2 (mm)
20	1/2	15	700 247 102	700 247 112	50	56	63
25	3/4	20	700 247 103	700 247 113	65	65	75
32	1	25	700 247 104	700 247 114	77	71	79
40	1 1/4	32	700 247 105	700 247 115	105	85	89
50	1 1/2	40	700 247 106	700 247 116	105	89	95
63	2	50	700 247 107	700 247 117	135	101	115

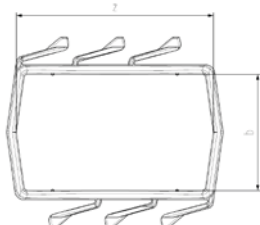
PVC-C							
d (mm)	Inch (inch)	DN (mm)	EPDM Code	FKM Code	D (mm)	L1 (mm)	L2 (mm)
20	1/2	15	700 247 122	700 247 132	50	56	63
25	3/4	20	700 247 123	700 247 133	65	65	75
32	1	25	700 247 124	700 247 134	77	71	79
40	1 1/4	32	700 247 125	700 247 135	105	85	89
50	1 1/2	40	700 247 126	700 247 136	105	89	95
63	2	50	700 247 127	700 247 137	135	101	115

PP-H							
d (mm)	Inch (inch)	DN (mm)	EPDM Code	FKM Code	D (mm)	L1 (mm)	L2 (mm)
20	1/2	15	700 247 142	700 247 152	50	56	63
25	3/4	20	700 247 143	700 247 153	65	65	75
32	1	25	700 247 144	700 247 154	77	71	79
40	1 1/4	32	700 247 145	700 247 155	105	85	89
50	1 1/2	40	700 247 146	700 247 156	105	89	95
63	2	50	700 247 147	700 247 157	135	101	115

ABS							
d (mm)	Inch (inch)	DN (mm)	EPDM Code	D (mm)	L1 (mm)	L2 (mm)	
20	1/2	15	700 247 162	50	56	63	
25	3/4	20	700 247 163	65	65	75	
32	1	25	700 247 164	77	71	79	
40	1 1/4	32	700 247 165	105	85	89	
50	1 1/2	40	700 247 166	105	89	95	
63	2	50	700 247 167	135	101	115	

PVDF							
d (mm)	Inch (inch)	DN (mm)	FKM Code	D (mm)	L1 (mm)	L2 (mm)	
20	1/2	15	700 247 172	50	56	63	
25	3/4	20	700 247 173	65	65	75	
32	1	25	700 247 174	77	71	79	
40	1 1/4	32	700 247 175	105	85	89	
50	1 1/2	40	700 247 176	105	89	95	
63	2	50	700 247 177	135	101	115	

Lock System for Valves

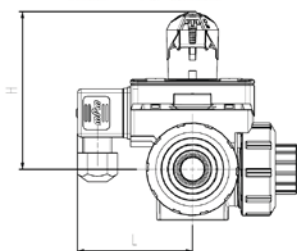


Union Lock System

- Ensures union nut tightening hold, even in severe conditions such as vibrations or heat dilation
- *Parts are only orderable with their codes through the Customizing Department

d (mm)	Inch (inch)	DN (mm)	Code	z (mm)	b (mm)
16-20	3/8 - 1/2	15	700 247 372	39	24
25	3/4	20	700 247 373	42	30
32	1	25	700 247 374	42	30
40	1 1/4	32	700 247 375	45	37
50	1 1/2	40	700 247 376	45	37
63	2	50	700 247 377	45	41
75	2 1/2	65	700 247 378	70	60
90	3	80	700 247 379	94	60
110	4	100	700 247 380	151	72

Ball Valve

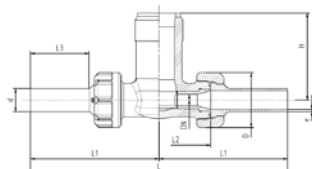


3way BV with positioner Feedback

- DN15 3way BV with Positioner Feedback
- PA & EA on request
- *Parts are only orderable with their codes through the Customizing Department

d (mm)	DN (inch)	EPDM Code	FKM Code	Material	Valve End connection	L (mm)	H (mm)
d20	1/2	700 247 328	-	ABS	Cement Socket ABS	82	56
d20	1/2	-	700 247 329	PVDF	IR BF-Spigot SDR11 PVDF	82	56
d20	1/2	700 247 330	700 247 331	PP-H	IR BF-Spigot SDR11 PP-H	106	65
d20	1/2	700 247 333	700 247 332	PVC-U	Cement Socket PVC-U	106	71
d20	1/2	700 247 334	700 247 335	PVC-C	Cement Socket PVC-C	152	101

Flow Measurement Fitting



Installation Fitting Type 318

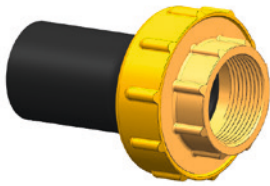
- Installation Fitting d20 PP-H with different sizes of Injection Nozzles for increasing the speed of low/small flow
- Compatible Signet flow sensors: type 2551, 2537, 515, 8510, 2536, 8512
- Compatible Signet pH/ORP sensors: type 2724, 2725, 2726, 2734, 2736, 2735

Attention: Flow sensor-modifying necessary

*Parts are only orderable with their codes through the Customizing Department

d (mm)	DN (mm)	EPDM Code	FKM Code	D (mm)	L (mm)	L1 (mm)	L2 (mm)	L3 (mm)	H (mm)	e (mm)	Sensor Type	Thread- ed Outlet
20	3	700 263 172	700 263 182									
20	4	700 263 173	700 263 183									
20	5	700 263 174	700 263 184	48	224	112	90	52	76	2	flow X0, pH XX	1 1/4" NPSM
20	7.5	700 263 175	700 263 185									
20	10	700 263 176	700 263 186									

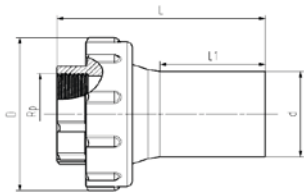
ELGEF Transition Union



- Union End: PE100-Long Spigot for EF*
- Union Bush: Brass with thread Rp/R
- Gasket: NBR*

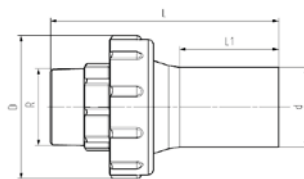
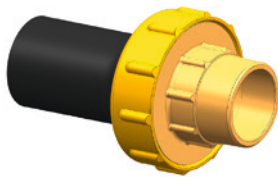
*Parts are only orderable with their codes through the Customizing Department

**Other materials on request



Transition Union - Female Thread Rp

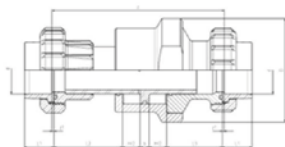
d (mm)	Rp (inch)	SDR (mm)	EPDM Code	D (mm)	L (mm)	L1 (mm)
20	1/2	11	700 225 606	50	112	65
25	3/4	11	700 225 607	57	109	60
32	1	11	700 225 608	69	113	59
40	1 1/4	11	700 225 609	84	111	56
50	1 1/2	11	700 225 610	90	116	59
63	2	11	700 225 611	110	126	65



Transition Union - Male Thread R

d (mm)	R (inch)	SDR (mm)	EPDM Code	D (mm)	L (mm)	L1 (mm)
20	1/2	11	700 225 506	50	127	65
25	3/4	11	700 225 507	57	126	60
32	1	11	700 225 508	69	129	59
40	1 1/4	11	700 225 509	84	131	56
50	1 1/2	11	700 225 510	90	135	59
63	2	11	700 225 511	110	150	65

Expansion Joint



Compensator

- PVC-U, PP-H & PE100 (other materials on request)
- Special stroke paths on request
- Compensate linear expansions (e.g. due to temperature)
- End connections: Cement sockets (PVC-U) & IR-Spigots (PP-H / PE100)
- Different end connections on request

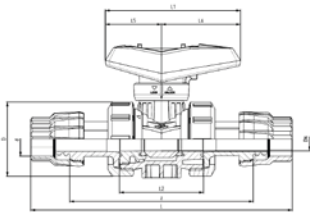
*Parts are only orderable with their codes through the Customizing Department

PVC-U											
d (mm)	PN (bar)	EPDM Code	FKM Code	H (mm)	z (mm)	b (mm)	D (mm)	z1 (mm)	L1 (mm)	L2 (mm)	L3 (mm)
32	16	700 263 114	700 263 144	30	178	11	85	3	25	61	70
40	16	700 263 115	700 263 145	38	204	12	100	3	29	75	73
50	16	700 263 116	700 263 146	48	232	12	125	3	34	86	80
63	16	700 263 117	700 263 147	60	268	12	144	3	41	103	88
75	16	700 263 118	700 263 148	70	308	14	164	3	47	113	105
90	16	700 263 119	700 263 149	90	372	14	200	5	56	133	125
110	16	700 263 120	700 263 150	100	415	14	240	5	66	141	150

PP-H											
d (mm)	PN (bar)	EPDM Code	FKM Code	H (mm)	z (mm)	b (mm)	D (mm)	z1 (mm)	L1 (mm)	L2 (mm)	L3 (mm)
32	10	700 263 124	700 263 154	30	178	11	85	3	23	61	70
40	10	700 263 125	700 263 155	38	204	12	100	3	25	75	73
50	10	700 263 126	700 263 156	48	232	12	125	3	28	86	80
63	10	700 263 127	700 263 157	60	268	12	144	3	32	103	88
75	10	700 263 128	700 263 158	70	308	14	164	3	36	113	105
90	10	700 263 129	700 263 159	90	372	14	200	5	42	133	125
110	10	700 263 130	700 263 160	100	415	14	240	5	49	141	150

PE100									
d (mm)	PN (bar)	EPDM Code	FKM Code	H (mm)	b (mm)	D (mm)	e (mm)	L1 (mm)	L3 (mm)
32	16	700 263 134	700 263 164	30	11	85	3	59	70
40	16	700 263 135	700 263 165	38	12	100	3.7	63	73
50	16	700 263 136	700 263 166	48	12	125	4.6	65	80
63	16	700 263 137	700 263 167	60	12	144	5.8	68	88
75	16	700 263 138	700 263 168	70	14	164	6.8	66	105
90	16	700 263 139	700 263 169	90	14	200	8.2	66	125
110	16	700 263 140	700 263 170	100	14	240	10		150

Sanipex MT Ball Valve

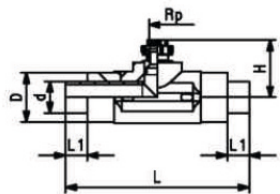


Sanipex MT Ball Valve 546 Pro PVC-U

- BV 546 Pro PVC-U with Sanipex MT Valve-Ends PP & PVC-U (other materials on request)
 - EA / PA on request
- *Parts are only orderable with their codes through the Customizing Department

Sanipex MT KH									
d	DN	EPDM	D	L	L1	L2	L5	L6	z
(mm)	(mm)	Code	(mm)	(mm)	(mm)	(mm)	(mm)	(mm)	(mm)
16	10	700 247 346	50	65	82	56	35	47	117
20	15	700 247 347	50	50	82	56	35	47	115
25	20	700 247 348	58	65	106	65	44	62	146
32	25	700 247 349	68	77	106	71	44	62	160
40	32	700 247 350	84	105	131	85	57	74	179
50	40	700 247 351	97	105	131	89	57	74	195
63	50	700 247 352	124	135	152	101	66	86	235

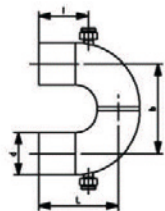
COOL-FIT Fittings



CoolFit 2.0/4.0 Transition T90°

- With screw connection on female thread
- Preinsulated, PE100, SDR11, metric
- Brass CuZn40Pb2 with female thread Rp
- Insulation made of GF HE foam
- Impact resistant, Color: Black
- Cool-Fit 2.0 permitted for indoor use
- Cool-Fit 4.0 permitted for outdoor use

d	D	Rp	Code	SP	L	L1	H	Type
(mm)	(mm)	(inch)				(mm)	(mm)	
90	140	1 ½	700 224 460	1	2	62	163	COOL-FIT 2.0
90	160	1 ½	700 224 461	1	2	62	189	COOL-FIT 4.0

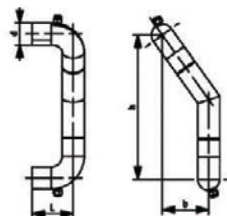


Bend 180°

- PE100, SDR11, metric

d	PN	Code	L	b	I
(mm)	(bar)		(mm)	(mm)	(mm)
90	10	700 224 791	168	190	105

with adapter unions Rp 1/2"



Offset bend

- PE100, SDR11, metric
- With Adapter Unions Rp 1/2"

d	PN	Code	L	b	I
(mm)	(bar)		(mm)	(mm)	(mm)
90	10	700 224 790	168	190	590



End Cap with vent

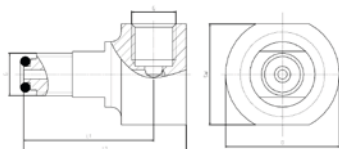
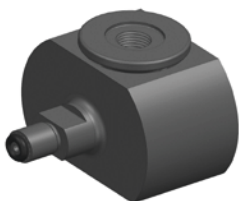
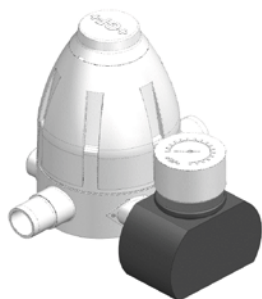
- PE100, SDR11, metric
- With Adapter Unions Rp 1/2"

d (mm)	PN (bar)	Code	L (mm)	I (mm)
90	10	700 224 792	116	90

Angled Adaptor for Process Automation

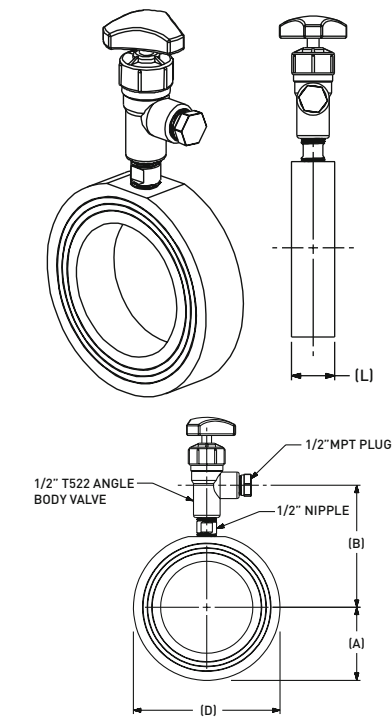
Angled pressure indicator incl. O-Ring

- To look at the Manometer from above
- *Parts are only orderable with their codes through the Customizing Department



G (inch)	Material	EPDM Code	FKM Code	L1 (mm)	L2 (mm)	SW (mm)	D (mm)
G 1/4	PVC-U	700 224 473	700 224 747	50	70	47.5	70
G 1/4	PP-H	700 224 475	700 224 476	50	70	47.5	70
G 1/4	PVDF	-	700 224 477	50	70	47.5	70

Wafer Vent Fitting

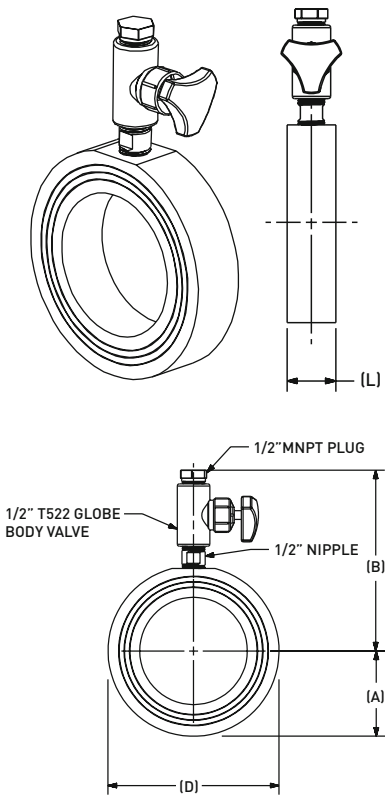


Wafer Vent Fitting with Type 522 Angle Valve

Type 522 Angle Body Sample Valve with threaded nipple into the PVDF wafer fitting. Wafer will be installed between a butterfly valve lug body and a PVDF flange (Components shipped unassembled).

- PVDF-HP

d (mm)	PN (bar)	Code	A (mm)	B (mm)	D (mm)	L (mm)
90	10	155 991 700	63	115	133	40
110	10	155 991 701	76	128	158	40
160	10	155 991 703	104	156	212	40
200	10	155 991 704	132	184	268	40
225	10	155 991 705	132	184	168	40
250	10	155 991 706	158	210	320	40
315	10	155 991 708	104	236	370	40



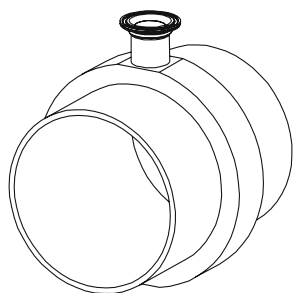
Wafer Vent Fitting with Type 522 Globe Valve

Type 522 Globe Body Sample Valve with threaded nipple into the PVDF wafer fitting. Wafer will be installed between a butterfly valve lug body and a PVDF flange (Components shipped unassembled).

- PVDF-HP

d (mm)	PN (bar)	Code	A (mm)	B (mm)	D (mm)	L (mm)
90	10	155 991 710	63	160	133	40
110	10	155 991 711	76	173	158	40
160	10	155 991 712	104	201	212	40
200	10	155 991 713	132	229	268	40
225	10	155 991 714	132	229	168	40
250	10	155 991 715	158	255	320	40
315	10	155 991 717	104	281	370	40

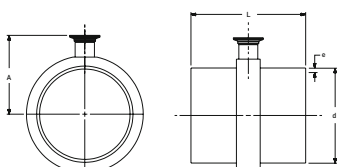
Instrument Fitting with Sanitary Adaptor



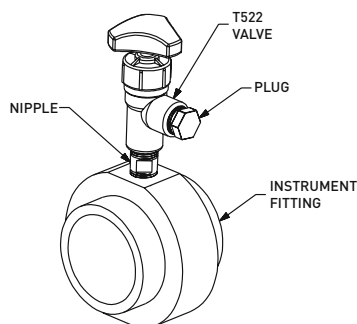
Instrument Fitting with Sanitary Adaptor

- 32mm x 1 1/2"
- PVDF-HP

d (mm)	PN (bar)	Code	e (mm)	A (mm)	L (mm)
110	16	155 991 157	5,3	111	140
160	10	155 991 158	4,9	131	140
225	10	155 991 159	6,9	166	155
250	10	155 991 161	7,7	179	155
315	10	155 991 162	9,7	211	155



Sampling Valve Assembly (160-315mm)

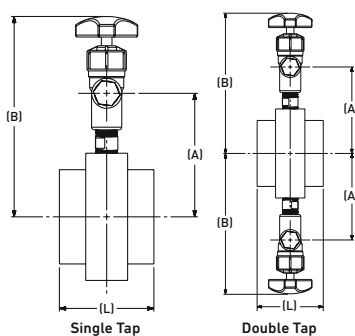


Tapped instrument fitting

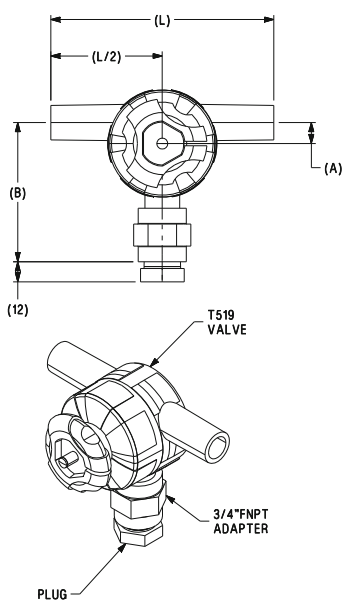
Tapped Instrument Fitting supplied with PVDF nipples, Type 522 angle body needle valves and PVC plugs.

- PVDF-HP

d x FPT (mm)	PN (bar)	Code	A (mm)	B (mm)	L (mm)
160 x 1/2" FPT	10	155 991 728	147	236	110
160 x 1/2" FPT	16	155 991 928	147	236	110
225 x 1/2" FPT	10	155 991 730	166	255	110
250 x 1/2" FPT	10	155 991 731	189	278	301
315 x 1/2" FPT	10	155 991 733	220	309	301



Drain/Sampling Assembly

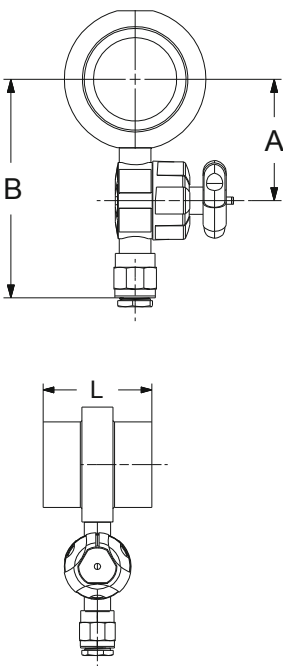


Zero Static Tee Valve

Type 519 zero static valve with a 3/4" branch and a socket-welded female threaded adapter with PVC threaded plug.

- PP-H

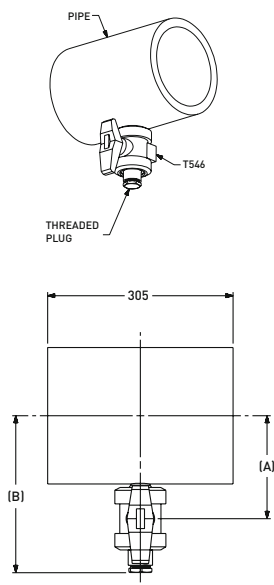
d x FPT (mm)	PN (bar)	Code	A (mm)	B (mm)	L (mm)
25 x 3/4" FPT	10	157 993 720	16	134	162
32 x 3/4" FPT	10	157 993 721	19	146	162
50 x 3/4" FPT	10	157 993 723	28	160	180
63 x 3/4" FPT	10	157 993 724	35	170	180



Diaphragm Tee Valve

Type 515 diaphragm valve with a 3/4" branch and a socket-welded female threaded adapter with PVC threaded plug.

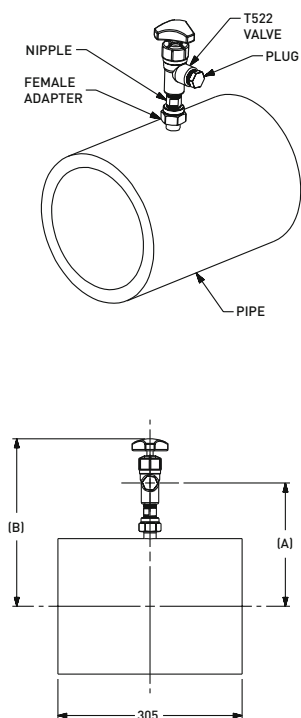
d x FPT (mm)	PN (bar)	Code	A (mm)	B (mm)	L (mm)
90 x 3/4" FPT	10	157 993 726	119	231	140
110 x 3/4" FPT	10	157 993 727	129	236	140



Tee Ball Valve

Socket welded 1" Type 546 PP ball valve into pipe wall and an FPT valve adapter with PVC threaded plug.

d x FPT (mm)	PN (bar)	Code	A (mm)	B (mm)
160 x 1" FPT	10	157 991 758	137	251
200 x 1" FPT	10	157 991 759	157	271
225 x 1" FPT	10	157 991 760	170	284
250 x 1" FPT	10	157 991 761	182	296
315 x 1" FPT	10	157 991 763	215	329
355 x 1" FPT	10	157 991 764	235	349
400 x 1" FPT	10	157 991 765	258	372
450 x 1" FPT	10	157 991 766	283	397
500 x 1" FPT	10	157 991 767	308	422

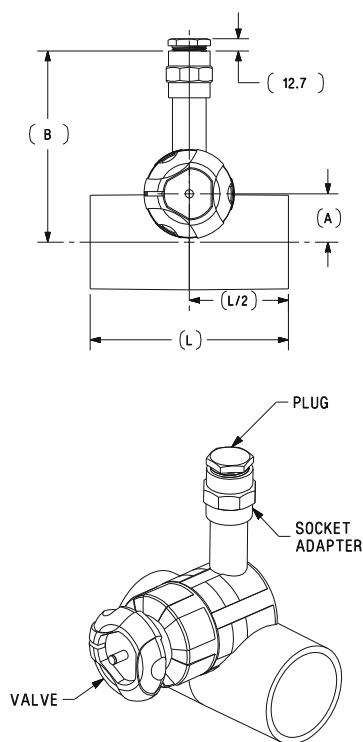


Tee Ball Valve

GF to provide a prefabricated spool with socket welded female thread adapter, Type 522 angle body needle valve, heavy wall PVDF nipple and PVC plug for final assembly in field. (Components shipped unassembled).

- PP-H

d x FPT (mm)	PN (bar)	Code	A (mm)	B (mm)
160 x ½" FPT	10	157 991 728	172	245
200 x ½" FPT	10	157 991 729	192	265
225 x ½" FPT	10	157 991 730	205	278
250 x ½" FPT	10	157 991 731	217	290
315 x ½" FPT	10	157 991 733	250	323
355 x ½" FPT	10	157 991 734	270	343
400 x ½" FPT	10	157 991 735	292	365
450 x ½" FPT	10	157 991 736	317	390
500 x ½" FPT	10	157 991 737	342	415



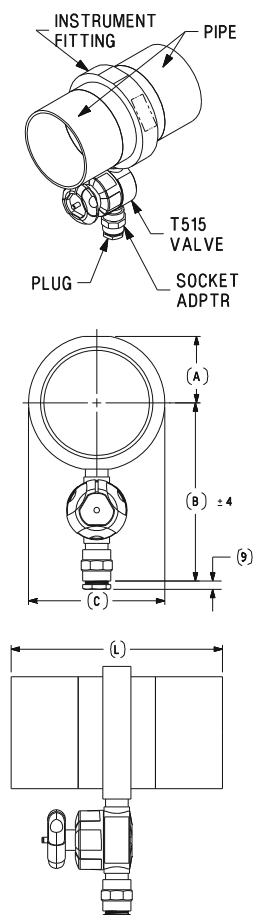
Zero static valve

Type 519 zero static valve with a 3/4" branch, socket-welded female threaded adapter and PVC plug.

- PVDF-HP

d x FPT (mm)	PN (bar)	Code	A (mm)	B (mm)	L (mm)
25 x 3/4" FPT	10	157 993 520	16	131	162
32 x 3/4" FPT	10	157 993 521	19	143	162
50 x 3/4" FPT	10	157 993 523	28	157	180
63 x 3/4" FPT	10	157 993 524	35	167	180
90 x 3/4" FPT	10	157 993 526	47	181	190
110 x 3/4" FPT	10	157 993 527	56	194	190

Low Point Drain Assembly (160–315mm)

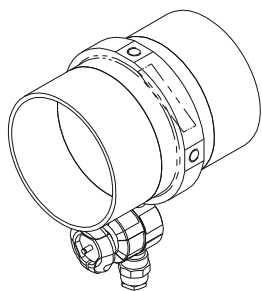


Diaphragm Tee Valve

Instrument fitting socket welded with a 32mm Type 515 valve, 1" female threaded adapter and PVC plug.

- PVDF-HP

d x FPT (mm)	PN (bar)	Code	A (mm)	B (mm)	C (mm)	L (mm)
160 x 1" FPT	10	155 993 528	95	258	194	301
160 x 1" FPT	16	155 991 958	95	258	194	301
225 x 1" FPT	10	155 993 560	126	289	254	301
250 x 1" FPT	10	155 993 561	137	300	278	301
315 x 1" FPT	10	155 993 563	168	331	338	301

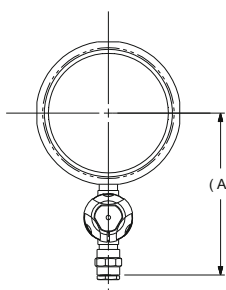
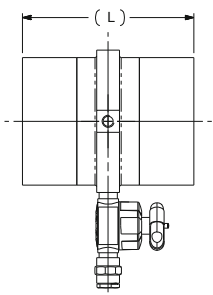


Diaphragm Tee Valve

Instrument Fitting with 32mm Type 515 Diaphragm drain socket welded in bottom port and (3) Female NPT Ports.

- PVDF-HP

d (mm)	PN (bar)	Code	A (mm)	L (mm)
160	10	155 993 938	254	301
225	10	155 993 940	286	301
250	10	155 993 941	299	301
315	10	155 993 943	332	301



Product Range

Customized solutions

GF Piping Systems' customization teams also support the market with a broader range of piping solutions that go beyond generic parts used in recurrent applications.

After years of experience and learning from supporting our customers' overcome challenges, we have been able to develop concepts and ideas that project after project have proven to be of great added value for the industry, and that, although they are not so common in their application, it is a great relief to have such solutions.

These concepts have innumerable configuration possibilities and are tailored to the needs of each project, but they help to solve major challenges of integrating piping applications in real life, for example due to lack of space or the absence of certain products in the standard piping and valve portfolio.

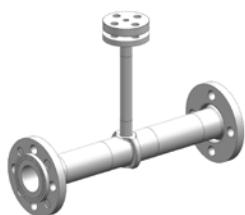
Spectacle Blind Flange



Spectacle Blind Flange

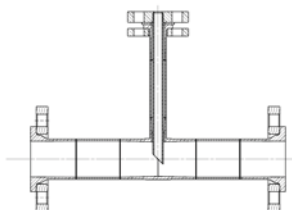
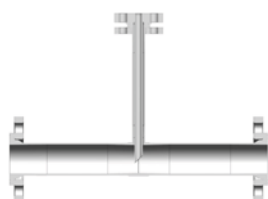
- Usable for opening and closing pipe systems in an easy way
- Available in PVDF, PP-H, PE, PVC-U, PVC-C & ABS
- Available for ISO & ANSI
- Available for d20 / 1/2" up to d315 / 12". Other dimensions on request

Injection Tee



Injection Tee

- Injection fitting for inserting dosed fluids (for example chlorine into water) into a system
- Also available with different associated static mixer
- PVDF-HP
- Different materials and dimensions on request
- Basically every connection possible
- Cleaned & double bagged in a non-cleanroom environment



Saddles

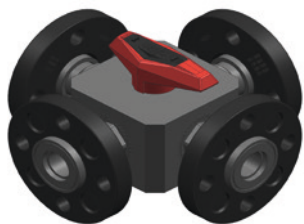


Weld-In Saddles

- Customized Weld-In Saddles
- Connecting dimension butt, socket, threaded or customized
- Materials: PE, PVDF & PP
- Main Pipe SDR11 recommended
- Full pressure rating
- Different dimensions on request

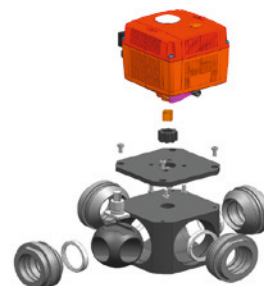
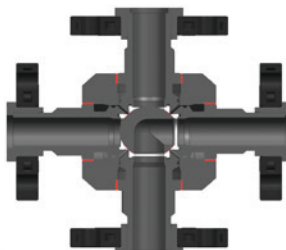
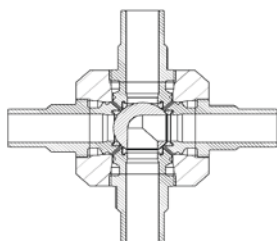


Valves



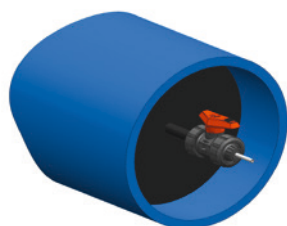
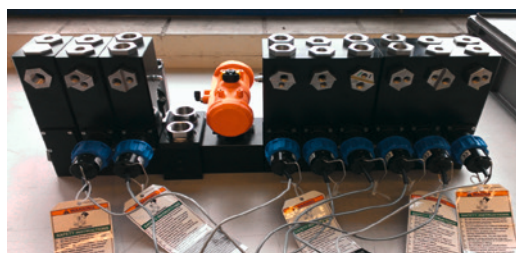
4way Ball Valve

- PVC-U, PVC-C, ABS, PP-H & PVDF
- d20 - d63
- Different Valve Ends on request
- Manual, EA & PA



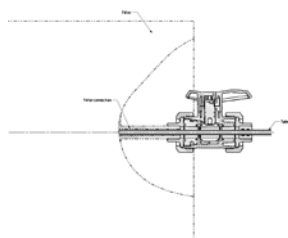
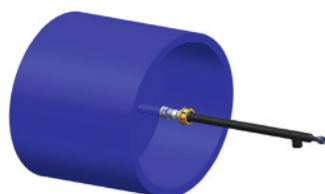
Block Valve Dosing Unit

- For different usages such as a Dosing Unit for Cooling Systems
- Different extras, connections and assemblies possible



Tee Arrangements

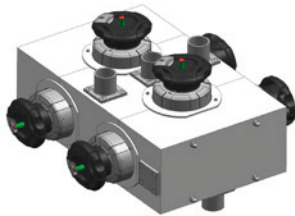
- Sampling Units for checking Membrane-Functions





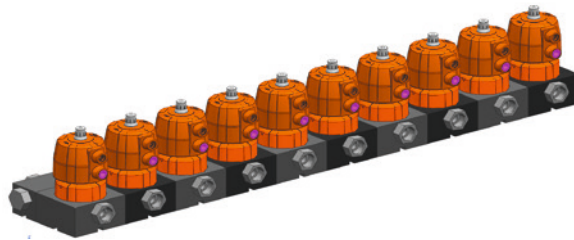
3way Ball Valve horizontal

- Base Body PVC-U, PVC-C & ABS possible
- EPDM or FKM
- Dimensions from d63 to d110
- Different Valve Ends and Actuation Principles possible
- DN smaller than usual
- L-Port or T-Port

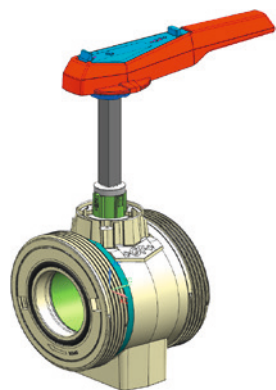


Diaphragm Block Valve

- For different distribution functions
- PA or manual actuation possible
- Different connections possible due to modular system
- Base Body in different materials possible
- Different dimensions and materials of Diaphragm Valve possible

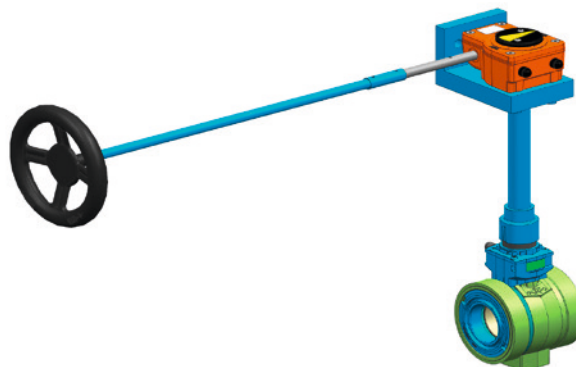


Handle Extensions



Handle Extensions

- Special Handle Extensions for Butterfly and Ball Valves

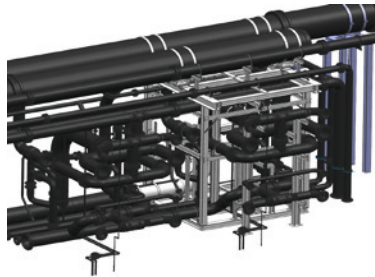


Headers and Manifolds

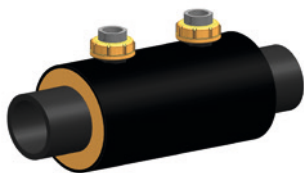


Headers and Manifolds

- Distribution for different mediums in different areas such as desalination plants, water filtrations etc.;
- Mainly PE & PP, other materials on request

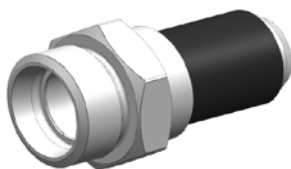
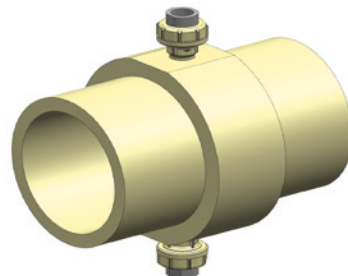
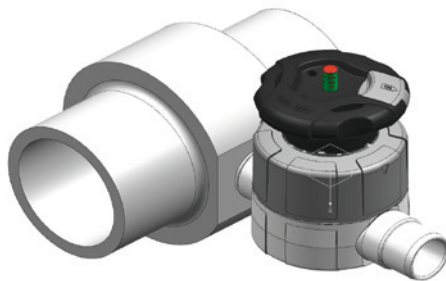


Fittings



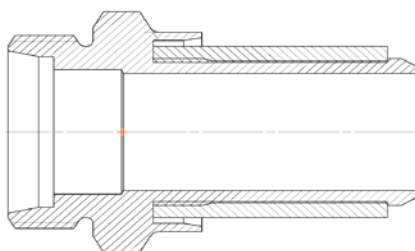
Instrument Fitting

- Compact fitting for easy assembly of different types of instruments (like Flow Meters, Sampling Valves, Sensors etc.)
- Mainly PP-H, PE & PVDF. Other materials on request
- Basically every connection possible
- Also possible as CoolFit



Utility Transition Fitting

- Adaptor for different hydraulic connections
- Spigot for ELGEF-Coupler
- d20 - d63
- Stainless Steel or Brass

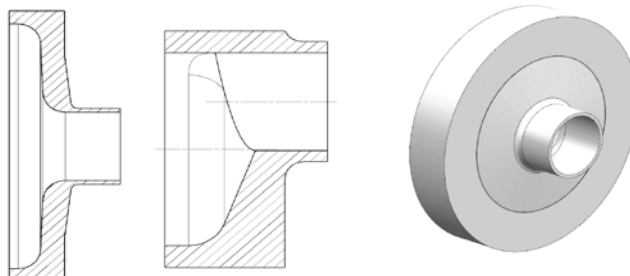


Reducers



Flush Style Reducer

- PP, PE & PVDF
- All dimensions connectable together
- Reducer with shortest possible length
- Eccentric & concentric

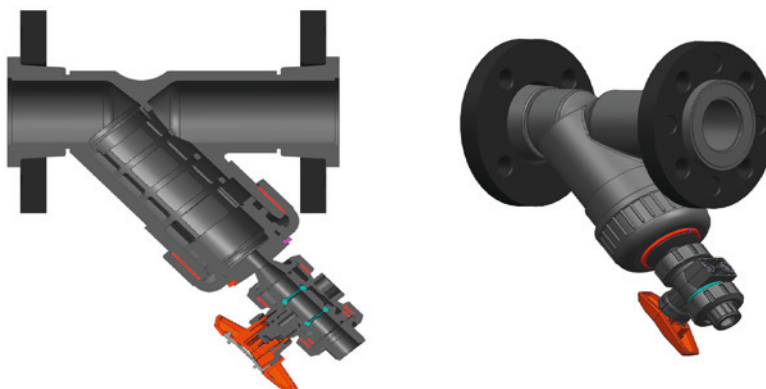


Strainer Assembly

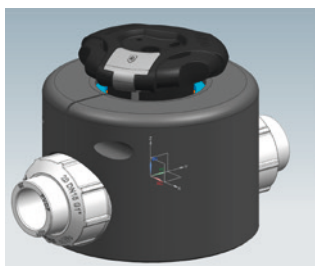


Strainer Assembly

- Strainer with Ball Valve
- For drainage
- d20 - d63
- PVC-U, PVC-C or ABS
- Cement socket, spigot or thread connection possible



Splash Guard



Splash Guard

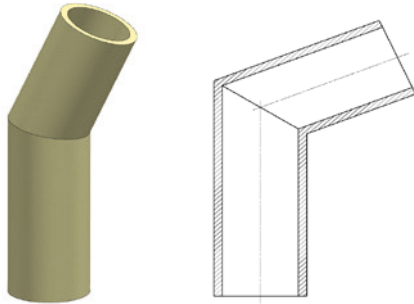
- Protection Reinforcement for Diaphragm Valve to avoid bursting under extreme circumstances
- Suitable for every Diaphragm Valve (manual and pneumatic actuated)

Bends

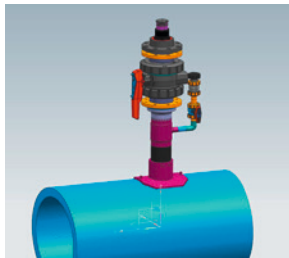


Segment-Welded Bends

- Segmented Bends with special angles
- PP or PE100
- Up to d160
- Also as CoolFit-Version possible
- Different z-dimensions possible



Sensor Replacing Assembly



Sensor Replacing Assembly

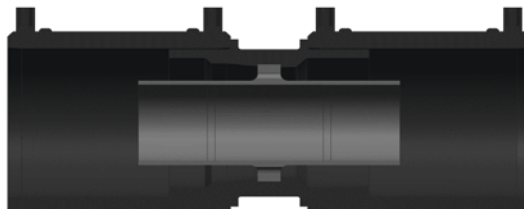
- For changing Sensors under pressure

Fixpoint Double Containment



Fixpoint for Double Containment-System

- PVDF, PVC-U, PP-H and PE100: d20 - d225
- PVC-C: d20 - d110



[illegible]

[illegible]

[illegible]

[illegible]

[illegible]

Local support around the world

Visit our webpage to get in touch with your local specialist:

www.gfps.com/our-locations



The information and technical data (altogether "Data") herein are not binding, unless explicitly confirmed in writing.
The Data neither constitutes any expressed, implied or warranted characteristics, nor guaranteed properties or a guaranteed durability. All Data is subject to modification. The General Terms and Conditions of Sale of Georg Fischer Piping Systems apply.