



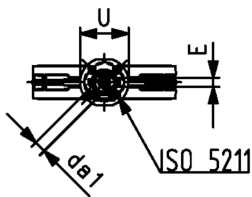
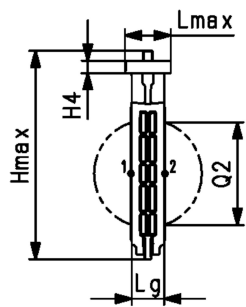
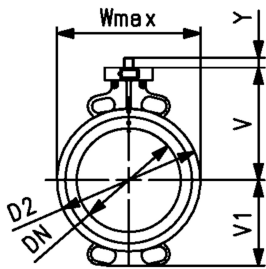
Butterfly Valve Type 565 Bare Shaft

Model:

- Installation length: EN558 row 20, ISO 5752 row 20, API 609 table 2
- Flange standards: ISO 7005 PN10/16, EN 1092 PN10/16, DIN 2501 PN10/16, ANSI/ASME B 16.5 Class 150, BS 1560: 1989 Class 125/150; BS 4504 PN10/16, JIS B 2220 10K, JIS B 2239 10K
- For easy installation and removal

Option:

- Individual configuration of the valve possible
- Hand (lockable), pneumatic or electric actuators from GF
- Double sensor for electrical position feedback incl. LED feedback



Do2 (mm)	Inch (inch)	DN (mm)	PN (bar)	Acc.to ISO 5211	EPDM Code	SP	Weight (kg)	FKM Code	SP	Weight (kg)
63	2	50	16	F07	199 565 100	1	0.9	199 565 120	1	1.0
75	2 ½	65	16	F07	199 565 101	1	1.1	199 565 121	1	1.2
90	3	80	16	F07	199 565 102	1	1.3	199 565 122	1	1.4
110	4	100	16	F07	199 565 103	1	2.0	199 565 123	1	2.2
140	5	125	16	F07	199 565 104	1	2.6	199 565 124	1	2.9
160	6	150	16	F07	199 565 105	1	3.7	199 565 125	1	3.8
225	8	200	10	F07	199 565 106	1	4.7	199 565 126	1	5.2
280	10	250	10	F10	199 565 107	1	8.8	199 565 127	1	9.5
315	12	300	10	F10	199 565 108	1	12.6	199 565 128	1	13.7

Do2 (mm)	Inch (inch)	DN (mm)	D2 (mm)	Wmax (mm)	Lmax (mm)	Hmax (mm)	H4 (mm)	V (mm)	V1 (mm)	Lg (mm)	da1 (mm)	E (mm)	U (mm)	Y (mm)
63	2	50	100.0	118.5	85.5	222.5	23.0	133.5	63.0	43.0	14.1	11.0	90.0	27.0
75	2 ½	65	121.0	132.5	85.5	248.5	23.0	140.0	82.0	46.0	14.1	11.0	90.0	27.0
90	3	80	138.0	138.0	85.5	261.0	23.0	146.0	89.0	46.0	14.1	11.0	90.0	27.0
110	4	100	158.5	158.5	85.5	286.0	23.0	166.5	104.0	52.0	18.1	14.0	90.0	16.0
140	5	125	187.0	187.0	85.5	313.5	23.0	180.0	118.0	56.0	18.1	14.0	90.0	16.0
160	6	150	213.0	213.0	85.5	337.5	23.0	189.0	130.5	56.0	22.2	17.0	90.0	19.0
225	8	200	267.0	267.0	85.5	387.0	23.0	209.5	195.0	60.0	22.2	17.0	90.0	19.0
280	10	250	325.5	325.5	125.5	499.0	23.0	262.5	195.5	68.0	28.2	22.0	125.0	41.0
315	12	300	380.0	380.0	125.5	555.0	23.0	284.5	230.5	78.0	28.2	22.0	125.0	41.0

Do2 (mm)	Inch (inch)	DN (mm)	Q2 (mm)
63	2	50	28.5
75	2 ½	65	44.0
90	3	80	63.5
110	4	100	84.0
140	5	125	110.5
160	6	150	137.5
225	8	200	191.5
280	10	250	239.0
315	12	300	285.5