

4/2-way pilot valve Type 5470



Product description

Type 5470 is a 4/2-way solenoid valve for double acting pneumatic actuators. This valve consists of a pilot rocker solenoid valve and a pneumatic valve. A tilting bearing tilts within the housing of the pilot valve, similar to a rocker, and switches the valve. The minimal tilting movement of the rocker is wear-free; basic lubrication is not required. The valves can be mounted together individually using a module flange. They can be snapped together with the connection modules to form valve blocks (on request).

Benefits/features

- Compact design in 4/2-way version
- Extendable valve block
- Reduced power consumption
- Robust construction

Technical data

Technical data		
Product properties		
Materials	Body	Polyamide (PA)
	Inner valve parts	Ultramid
	Seal material	NBR
Weight	approx. 120g	
Nominal diameter	DN4	
Nominal operating mode	Continuous operation	
Electrical data		
Operating voltage	24V AC/DC, 110-120V AC/DC, 220-240V AC/DC	
Voltage tolerance	± 10 %	
Electrical power consumption	24V AC/DC: 2W, 110-120V AC/DC, 220-240V AC/DC: 3 W	
Performance data		
Pressure range	2...10 bar overpressure with respect to atmospheric pressure	
Q _{Nn} value air	300 l/min*	
Electrical nominal power	2...3 W; Solenoids with integrated rectifier, LED and varistor (UC variant) solenoids	
Medium data		
Operating media	Compressed air, neutral gases (5 µm filtration)	
Medium temperature	- 10...+ 50 °C	

Technical data

Approvals and certificates

Protection class	IP65
Type of protection	EEx Ia IIC T6 on request

Product connections

Electrical connection	Connector lugs according to DIN EN 175301 – 803, Form C
Port connection	NAMUR
Air connection	Sleeve G 1/8

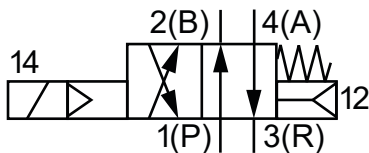
Environment and installation

Ambient temperature	- 10...+ 55 °C
Installation position	Any, preferably actuator face up

* Flow rate value for air, measurement at + 20 °C, 6 bar pressure at the valve inlet and 1 bar pressure difference

Switching functions

Circuit function G



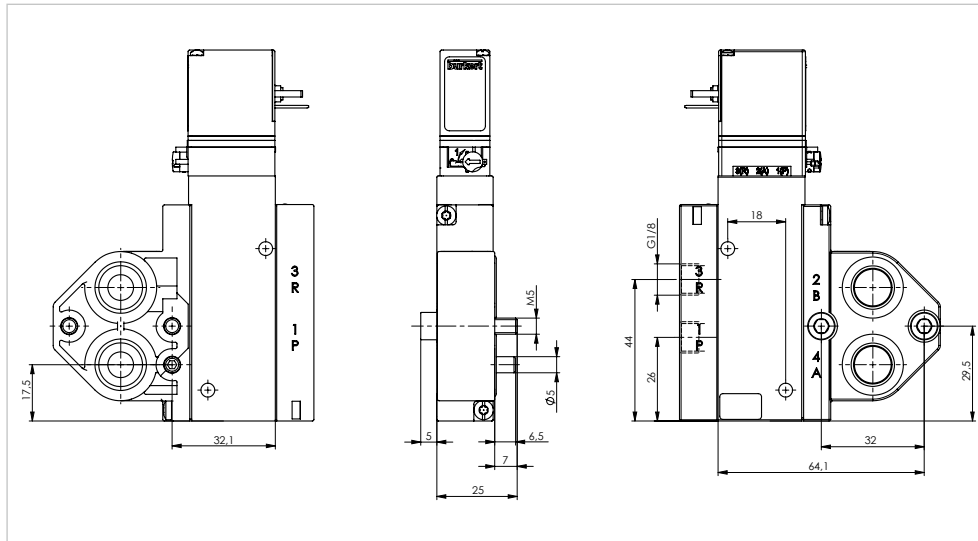
Type: G, solenoid valve
 4/2 way
 Servo-assisted
 Normally open

Switching time

Open	Close
15	12

Switching time (ms): Measurement at valve outlet according to ISO 12238 at 6 bar and +20 °C. Open: Pressure build-up 0% to 90%. Close: Pressure build-up 100% to 10%.

Dimensions



The information and technical data (altogether "Data") herein are not binding, unless explicitly confirmed in writing. The Data neither constitutes any expressed, implied or warranted characteristics, nor guaranteed properties or a guaranteed durability. All Data is subject to modification. The General Terms and Conditions of Sale of Georg Fischer Piping Systems apply.

11/2022-A
 © Georg Fischer Piping Systems Ltd, 8201 Schaffhausen/Switzerland
 Tel. +41 52 631 11 11 • www.gfps.com • E-Mail: info.ps@georgfischer.com