

JRG Valves

JRGURED Combi

Technical Documentation



JRGURED Combi



- 1 Valve cover
- 2 Pressure spring
- 3 Bronze body
- 4 O-Ring
- 5 Screw collar
- 6 Filter cup
- 7 Filter tube
- 8 Insert
- 9 Drain valve
- 10 Cap

The JRGURED Combi domestic water station is a multiple fitting consisting of a fine filter and a pressure-reducing valve.

Function

The pressure of water from the main supply network may have to be reduced to a value suitable for the customer's system.

The reducing valve in the fitting decreases the inlet pressure to a lower, constant outlet pressure.

Repair work etc. on the main distribution network can result in suspended particles such as scale, rust, sand and so on passing by way of the building tee-off into the domestic piping-system.

The fine filter, situated ahead of the pressure reducing valve intercepts suspended material larger than 100µm. The complete following domestic house installation will be protected at it's best.

Installation requirements

The installation of the JRGURED combi domestic water station is covered by SVGW guidelines W3, issued 1992. Relevant regulations of the local water supply utility must be observed.

Resetting the pressure-reducing valve

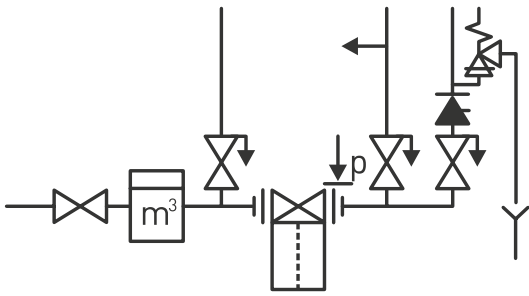
Any person who alters the factory-set pressure does so entirely on their own responsibility (see installation instructions).

Notes

Repairs on the JRGURED Combi domestic water station must not be attempted. For maintenance of the fine filter, the maintenance instructions must be observed.

The inserted fine filter in the JRGURED Combi is only for retaining ingested suspended particles. It does in no way replace any desired or necessary water treatment (softening, sterilisation, etc.).

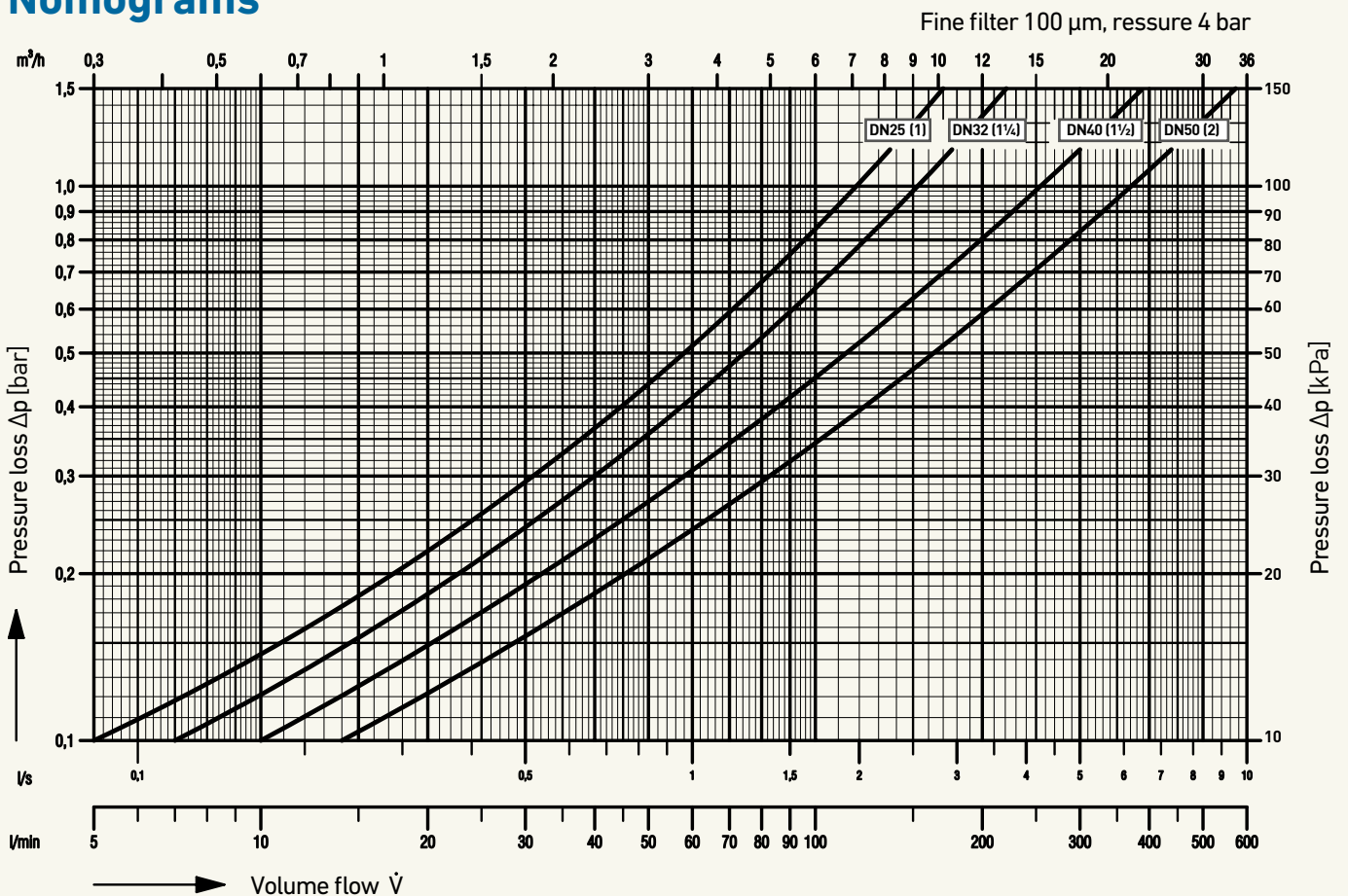
Installation examples



Advantages

- Body made of gunmetal
- Two pressure ranges available:
 - PN 16 Filter cup made of high quality plastic, transparent and filter tube of nylon, usable up to 50°C
 - PN 25 Filter cup made of gunmetal and filter tube of nylon
- All water carrying parts made of gunmetal, stainless steel or plastic
- Filter cup easy dismantled
- Filter cup with integrated drain valve
- Drain valve with house spout
- Low valve top height
- Same size as JRGURED 1130
- Tested and approved by SVGW

Nomograms



JRGURED Combi



JRGURED Combi house water station, PN 16 - 4 bar

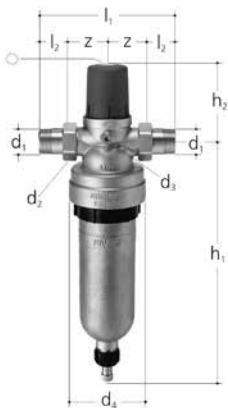
Combined pressure reducing valve with fine filter, PN 16
 Connections with male thread BR1 according EN ISO 228-1, without brass screw connections, threaded connection for manometer valve closed with plug.
 Gunmetal body, plastic cover top, slide and seat made of stainless steel, membrane and valve gasket made of EPDM, transparent plastic filter cup with drain cock, fine filter element 100 µm, threaded ring and key, Factory setting 4 bar. Screw connections see 8201, plug see 5149.080, filter cup 1848/1849, fine filter element 1838/1839, fine filter key 8127.000, transparent filter cups have to be protected from UV rays and aggressive surroundings/influences.

It's required to use only AFM 34 gaskets.

* AFM 34 gaskets cannot be oiled neither be greased

Secondary pressure 200-600 kPa (2-6 bar), Tmax 30°C

GN (inch)	DN (mm)	JRG Code	GF Code	Weight (kg)	d2 G (inch)	d3 Rp (inch)	d4 (mm)	h1 (mm)	h2 (mm)	l1 (mm)	z (mm)	⊙
1	25	1353.025	350 690 501	3.950	1 ¼	¼	122	390	110	100	50	6
1 ¼	32	1353.032	350 690 502	4.360	1 ½	¼	122	393	120	120	60	6
1 ½	40	1353.040	350 690 503	6.100	1 ¾	¼	130	403	157	146	73	8
2	50	1353.050	350 690 504	7.660	2 ¾	¼	130	415	172	176	88	8



JRGURED Combi house water station, PN 25 - 4 bar

Combined pressure reducing valve with fine filter, PN 25
 Connections with male thread BR1 accord. EN ISO 228-1, with brass screw connections, AFM 34* gaskets, threaded connection for manometer valve closed with plug.
 Gunmetal body, plastic cover top, slide and seat made of stainless steel, membrane and valve gasket made of EPDM, gunmetal filter cup with drain cock, fine filter element 100 µm, threaded ring and key.

Factory setting 4 bar. Screw connections see 8201, plug see 5149.080, filter cup 1848/1849, filter element 1838/1839, fine filter key 8127.000

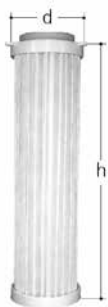
* AFM 34 gaskets cannot be oiled neither be greased

Secondary pressure 200-600 kPa (2-6 bar), Tmax. 30°C

GN (inch)	DN (mm)	JRG Code	GF Code	Weight (kg)
1	25	1360.400	350 690 601	7.220
1 ¼	32	1360.480	350 690 602	7.820
1 ½	40	1360.560	350 690 603	9.670
2	50	1360.640	350 690 604	11.000

GN (inch)	DN (mm)	d1 R (inch)	d2 G (inch)	d3 Rp (inch)	d4 (mm)	h1 (mm)	h2 (mm)	l1 (mm)	l2 (mm)	z (mm)	⊙
1	25	1	1 ¼	¼	122	390	110	167	34	50	6
1 ¼	32	1 ¼	1 ½	¼	122	393	120	196	38	60	6
1 ½	40	1 ½	1 ¾	¼	130	403	157	223	39	73	8
2	50	2	2 ¾	¼	130	415	172	269	47	88	8

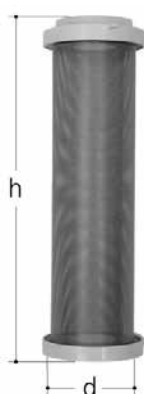
Spare parts/Accessories



Filter element

Made of PES fleece, for water up to 30°C
Suitable for: 1350–1363, 1830-1846

d (mm)	JRG Code	GF Code	Weight (kg)	h (mm)	µm
70	1838.005	350 590 002	0.100	250	5
70	1838.020	350 590 102	0.140	250	20
70	1838.050	350 590 202	0.100	250	50
70	1838.150	350 590 302	0.140	250	150
70	1838.350	350 590 402	0.140	250	350



Filter element

Stainless steel (V4A), for water up to 70°C. Can be washed.
For JRG 1350–1363, 1830-1846

d (mm)	JRG Code	GF Code	Weight (kg)	h (mm)	µm
70	1839.001	350 590 502	0.120	250	1000
70	1839.050	350 588 202	0.435	250	50
70	1839.100	350 590 514	0.250	250	100



Fine filter key

Made of plastic, for screw collar of the filter cups 1830/1849

d (mm)	JRG Code	GF Code	Weight (kg)	h (mm)
113	8127.000	355 591 401	0.080	190

Connection pieces

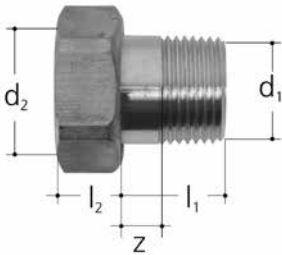
Union with male thread



Made of brass, with long male thread, as length adjustment by changing to other pressure reducing valves

GN (inch)	DN (mm)	JRG Code	GF Code	Weight (kg)	d1 R (inch)	d2 G (inch)	l1 (mm)	l2 (mm)	Z (mm)	O-Ring
1	25	8299.400	355 583 801	0.440	1	1 ¼	138	8	18	09 294 04
1 ¼	32	8299.480	355 584 001	0.760	1 ¼	1 ½	165	9	19	09 294 05
1 ½	40	8299.560	355 584 201	1.060	1 ½	1 ¾	175	10	21	09 294 06
2	50	8299.640	355 584 401	1.160	2	2 ¾	122	11	25	09 294 12

Union with male thread



Made of brass, with conical male thread and gasket suitable to 1300-1333, 1350-1363, 2100-2110, 2113, 2130-2140, 2143, 8201.402 suitable to 9601.040, 9603.040, 9606.040, 9695.480

GN (inch)	DN (mm)	JRG Code	GF Code	Weight (kg)	d1 R (inch)	d2 G (inch)	l1 (mm)	l2 (mm)
1	25	8201.400	350 331 901	0.180	1	1 ¼	34	8
1 ¼	32	8201.480	350 332 001	0.290	1 ¼	1 ½	38	9
1 ½	40	8201.560	350 332 101	0.360	1 ½	1 ¾	39	10
2	50	8201.640	350 332 201	0.620	2	2 ¾	47	11

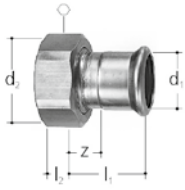
Adapter piece



Made of gunmetal/brass, with gasket, for exchanging JRG 1400 with JRGURED 1303

GN (inch)	DN (mm)	JRG Code	GF Code	Weight (kg)	d1 G (inch)	d2 G (inch)	l1 (mm)	l2 (mm)
1	25	1136.400	350 496 901	0.270	1 ¼	1 ¼	40	11
1 ¼	32	1136.480	350 497 001	0.408	1 ½	1 ½	53	12
1 ½	40	1136.560	350 497 101	0.547	1 ¾	1 ¾	58	12
2	50	1136.640	350 497 201	1.630	2 ¼	2 ¾	58	14

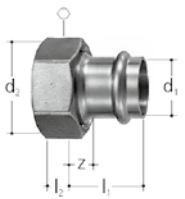
Connection pieces



Screw connection for Mapress press-fitting system BR 1

With press-socket and loose nut, flat sealed, fits 1303, 1313, 1323, 1333, 1353, 1363, 1611, 1621, 2100-2140, 2161, 3600, 5010, 5011, 5080, 5081, 5211, 5281, 6320

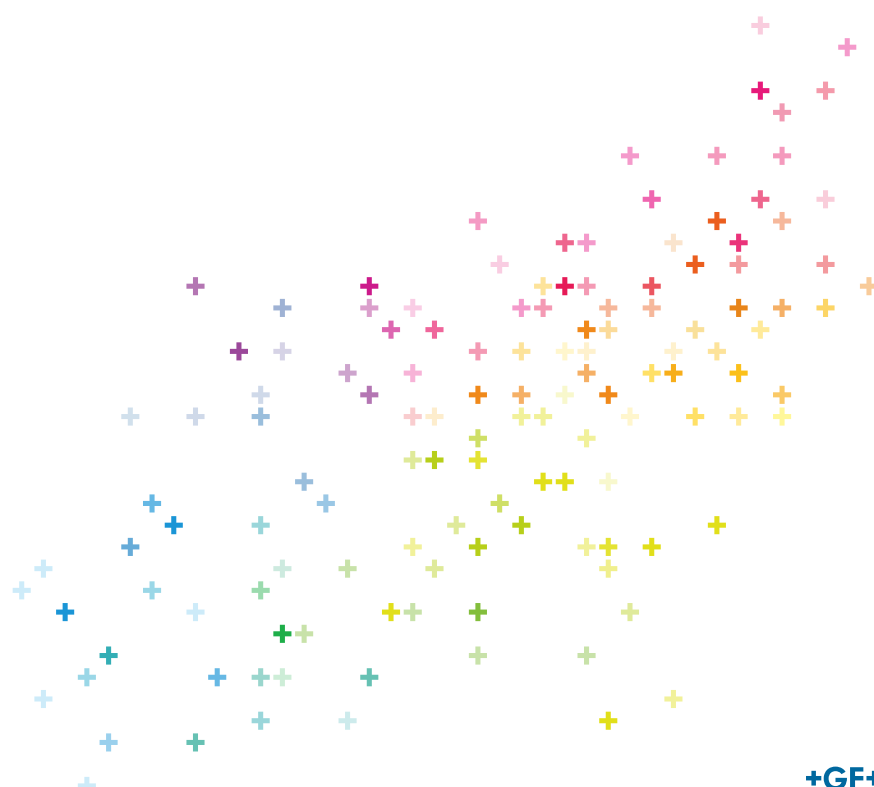
d1 (mm)	DN (mm)	JRG Code	GF Code	Weight (kg)	d2 G (inch)	l1 (mm)	l2 (mm)	z (mm)	⬡	O-Ring
28	25	8350.028	355 600 203	0.170	1 ¼	36	9	13	46	09 294 04
35	32	8350.035	355 600 204	0.214	1 ½	39	10	14	52	09 294 05
42	40	8350.042	355 600 205	0.240	1 ¾	43	10	14	58	09 294 06
54	50	8350.054	355 600 206	0.430	2 ¾	49	10	14	75	09 294 12



Screw connection for Optipress/Viega-Sanpress system BR 1

With press-socket and loose nut, flat sealed, fits 1303, 1313, 1323, 1333, 1353, 1363, 1611, 1621, 2100-2140, 2161, 3600, 5010, 5011, 5080, 5081, 5211, 5281, 6320

d1 (mm)	DN (mm)	JRG Code	GF Code	Weight (kg)	d2 G (inch)	l1 (mm)	l2 (mm)	z (mm)	⬡	O-Ring
28	25	8355.028	355 600 604	0.170	1 ¼	42	11	18	46	09 294 04
35	32	8355.035	355 600 605	0.210	1 ½	44	13	18	53	09 294 05
42	40	8355.042	355 600 606	0.360	1 ¾	61	13	20	60	09 294 06
54	50	8355.054	355 600 607	0.540	2 ¾	61	16	15	78	09 294 12



Worldwide at home

Our sales companies and representatives ensure local customer support in over 100 countries.

www.gfps.com

Argentina / Southern South America

Georg Fischer Central Plastics
Sudamérica S.R.L.
Buenos Aires, Argentina
Phone +5411 4512 02 90
Fax +5411 4512 02 93
gfcentral.ps.ar@georgfischer.com
www.gfps.com/ar

Australia

George Fischer Pty Ltd
Riverwood NSW 2210
Phone +61 (0)2 9502 8000
Fax +61 (0)2 9502 8090
australia.ps@georgfischer.com
www.gfps.com/au

Austria

Georg Fischer Rohrleitungssysteme GmbH
3130 Herzogenburg
Phone +43 (0) 2782 856 43 0
Fax +43 (0) 2782 856 64
austria.ps@georgfischer.com
www.gfps.com/at

Belgium / Luxembourg

Georg Fischer NV/SA
1070 Bruxelles/Brüssel, Belgium
Phone +32 (0)2 556 40 20
Fax +32 (0)2 524 34 26
be.ps@georgfischer.com
www.gfps.com/be

Brazil

Georg Fischer Sist. de Tub. Ltda.
04571-020 São Paulo/SP
Phone +55 (0)11 5525 1311
br.ps@georgfischer.com
www.gfps.com/br

Canada

Georg Fischer Piping Systems Ltd
Mississauga, ON L5T 2B2
Phone +1 (905) 670 8005
Fax +1 (905) 670 8513
ca.ps@georgfischer.com
www.gfps.com/ca

China

Georg Fischer Piping Systems Ltd
201319 Shanghai
Phone +86 21 3899 3899
Fax +86 21 3899 3888
china.ps@georgfischer.com
www.gfps.com/cn

Denmark / Iceland

Georg Fischer A/S
2630 Taastrup, Denmark
Phone +45 (0) 7022 1975
Fax +45 (0) 7022 1976
info.dk.ps@georgfischer.com
www.gfps.com/dk

Finland

Georg Fischer AB
01510 Vantaa
Phone +358 (0)9 586 58 25
Fax +358 (0)9 586 58 29
info.fi.ps@georgfischer.com
www.gfps.com/fi

France

Georg Fischer SAS
95932 Roissy Charles de Gaulle Cedex
Phone +33 (0)1 41 84 68 84
Fax +33 (0)1 41 84 68 85
fr.ps@georgfischer.com
www.gfps.com/fr

Germany

Georg Fischer GmbH
73095 Albershausen
Phone +49 (0)7161 302 0
Fax +49 (0)7161 302 25 9
info.de.ps@georgfischer.com
www.gfps.com/de

India

Georg Fischer Piping Systems Pvt. Ltd.
400 076 Powai, Mumbai
Phone +91 22 4007 2001
Fax +91 22 4007 2020
branchoffice@georgfischer.com
www.gfps.com/in

Indonesia

Georg Fischer Representative Office
10310 Jakarta
Phone +62 21 391 48 62
Fax +62 21 391 48 63
sgp.ps@georgfischer.com
www.gfps.com/sg

Italy

Georg Fischer S.p.A.
20063 Cernusco S/N (MI)
Phone +39 02 921 86 1
Fax +39 02 921 86 24 7
it.ps@georgfischer.com
www.gfps.com/it

Japan

Georg Fischer Ltd
556-0011 Osaka
Phone +81 (0)6 6635 2691
Fax +81 (0)6 6635 2696
jp.ps@georgfischer.com
www.gfps.com/jp

Korea

Georg Fischer Piping Systems
463-824 Seoul
Phone +82 31 8017 1450 3
Fax +82 31 8017 1454
kor.ps@georgfischer.com
www.gfps.com/kr

Malaysia

Georg Fischer (M) Sdn. Bhd. Sales Office
40460 Shah Alam, Selangor Darul Ehsan
Phone +60 (0)3 5122 5585
Fax +60 (0)3 5122 5575
my.ps@georgfischer.com
www.gfps.com/my

Mexico / Northern Latin America

Georg Fischer S.A. de C.V.
Apodaca, Nuevo Leon, Mexico
Phone +52 (81) 1340 8586
Fax +52 (81) 1522 8906
mx.ps@georgfischer.com
www.gfps.com/mx

Middle East

Georg Fischer
Piping Systems (Switzerland) Ltd
Dubai, United Arab Emirates
Phone +971 4 289 49 60
Fax +971 4 289 49 57
gss.ps@georgfischer.com
www.gfps.com/int

Netherlands

Georg Fischer N.V.
8161 PA Epe
Phone +31 (0) 578 678 222
Fax +31 (0) 578 621 768
nl.ps@georgfischer.com
www.gfps.com/nl

New Zealand

Georg Fischer Ltd
5140 Upper Hutt
Phone +64 (0) 4 527 9813
Fax +64 (0) 4 527 9834
nz.ps@georgfischer.com
www.gfps.com/nz

Norway

Georg Fischer AS
1351 Rud
Phone +47 67 18 29 00
Fax +47 67 13 92 92
no.ps@georgfischer.com
www.gfps.com/no

Philippines

Georg Fischer Representative Office
1604 Pasig City
Phone +632 571 2365
Fax +632 571 2368
sgp.ps@georgfischer.com
www.gfps.com/sg

Poland

Georg Fischer Sp. z o.o.
05 090 Sekocin Nowy
Phone +48 (0)22 3131 050
Fax +48 (0)22 3131 060
poland.ps@georgfischer.com
www.gfps.com/pl

Romania

Georg Fischer Rohrleitungssysteme (Elvetia)
S.A. SUCURSALA BUCURESTI
020257 Bucuresti
Phone +40 311 040 492
Fax +40 212 317 479
ro.ps@georgfischer.com
www.gfps.com/int

Russia

Georg Fischer
Piping Systems (Switzerland) Ltd
Moscow Representative Office
125040 Moscow
Phone +7 495 748 11 44
ru.ps@georgfischer.com
www.gfps.com/ru

Singapore

Georg Fischer Pte Ltd
528 872 Singapore
Phone +65 6747 0611
Fax +65 6747 05 77
sgp.ps@georgfischer.com
www.gfps.com/sg

Spain / Portugal

Georg Fischer S.A.
28046 Madrid
Phone +34 (0) 91 781 98 90
Fax +34 (0) 91 426 08 23
es.ps@georgfischer.com
www.gfps.com/es

Sweden

Georg Fischer AB
11743 Stockholm
Phone +46 (0) 8 506 77 50 0
Fax +46 (0) 8 749 23 70
info.se.ps@georgfischer.com
www.gfps.com/se

Switzerland

Georg Fischer
Rohrleitungssysteme (Schweiz) AG
8201 Schaffhausen
Phone +41 (0)52 631 30 26
Fax +41 (0)52 631 28 00
ch.ps@georgfischer.com
www.gfps.com/ch

Taiwan

Georg Fischer Co. Ltd.
24158 New Taipei City
Phone +886 2 8512 2822
Fax +886 2 8512 2823
tw@georgfischer.com
www.gfps.com/tw

Turkey

Georg Fischer Hakan Plastik
Boru ve Profil San. Tic. A.S.
59500 Cerkezoy / Tekirdag
Phone +90 282 726 64 43
Fax +90 282 726 94 67
hpsales@hakan.com.tr
www.hakan.com.tr

United Kingdom / Ireland

Georg Fischer Sales Ltd
CV2 2ST Coventry, United Kingdom
Phone +44 (0) 2476 535 535
Fax +44 (0) 2476 530 450
uk.ps@georgfischer.com
www.gfps.com/uk

USA / Caribbean

Georg Fischer LLC
92618 Irvine
Phone +1 714 731 88 00
Fax +1 714 731 62 01
Toll Free 800/854 40 90
us.ps@georgfischer.com
www.gfpiping.com

International

Georg Fischer
Piping Systems (Switzerland) Ltd
8201 Schaffhausen/Switzerland
Phone +41 (0) 52 631 30 03
Fax +41 (0) 52 631 28 93
info.export@georgfischer.com
www.gfps.com/int

The technical data are not binding. They neither constitute expressly warranted characteristics nor guaranteed properties nor a guaranteed durability. They are subject to modification. Our General Terms of Sale apply.

37 272 62
e / 0718 / SMS
© Georg Fischer JRG AG
Hauptstrasse 130
CH-4450 Sissach/Switzerland
Telefon +41 (0) 61 975 22 22
info.jrg.ps@georgfischer.com
Printed in Switzerland