

GF Piping Systems

+GF+

Embrace the cold

COOL-FIT 4.0





Drawbacks and inefficiencies of traditional cooling systems

Lack of specialized installers, frequent maintenance, and energy loss are some of the many challenges affecting efficient cooling processes. Addressing these issues is crucial for ensuring reliable installations and uninterrupted operations.

Cooling systems for industrial cooling, process cooling, and air conditioning consume large amounts of energy to maintain a constant system temperature. Selecting the appropriate piping system to support the cooling circuit is of utmost importance for planners, installers, and operators who aim for an efficient and reliable cooling process. What should you consider in particular?

The two most important factors are the material and the insulation. With conventional metal installations, the risk of condensation and subsequent corrosion is exceptionally high. This risk also occurs in systems that have been post-insulated: The insulation material can be damaged during installation, and small gaps between the piping system and the insulation layer can occur, allowing ice formation due to condensation and subsequent corrosion. Furthermore, the added weight of the metal and the subsequent insulation process necessitate extra equipment and steps, placing further strain on the already limited number of on-site installers.



Non-corrosive materials and vapor sealed insulation are of utmost importance for reliable and efficient piping systems in cooling applications.



Soft insulation materials are easily damaged by mechanical, or environmental impacts as e.g. UV light, chemicals, etc.



Condensation caused by damaged insulations lead to significant corrosion and high maintenance cost during the life time of a system.



The lack of certified manpower on-site leads to failure during operation due to quality issues during installation.



The high weight of steel pipe require robust building constructions and heavy duty equipment for the installation.



Cooling systems are installed towards end of a building construction. Earlier delays often lead to time pressure.

COOL-FIT 4.0

Extreme reliability

The condensation and corrosion-free piping system for operations with no interruptions, zero maintenance, and highest efficiency.



System integrity

The complete product portfolio consists of pre-insulated pipes, fittings, valves, flexible hoses, and all tools necessary for a safe and reliable installation.



Efficient

High grade pre-insulation enhances energy efficiency (by 30% in average) with huge impact on costs and the planet's energy consumption.



Reliable and safe

The plastic based system ensures maintenance-free operation for safe 24/7 production processes over a 25-year minimum lifespan.



Corrosion-free

100% corrosion-free and longer lasting than metal alternatives. No incrustation for reliable long-term efficient operation.



Fast and easy

Simple jointing with electrofusion saves time and helps to maintain the quality of joints even without certified personnel.



Lightweight

In average 60% less weight than steel pipes, allowing single-person installs and more light weight building constructions.



Designed for industrial applications

Dimensions from 20 to 450 mm for indoor and outdoor installations.

Complete system integrity

With COOL-FIT, GF Piping Systems offers a unique, top-notch piping system solution, including pre-insulated pipes, fittings, valves, flexible hoses, and tools. The interfaces between all components ensure compatibility by design. This reduces onsite modifications to an absolute minimum.

Pre-insulated pipes

The lightweight pre-insulated pipes are easy to joint and to handle on site. The 3-in-1 concept allows the installation of media pipe, insulation and jacket in one step.



Foam removal and peeling tools

GF Piping Systems takes the hassle out of foam removal and peeling. Easy to use foam removal tools ensure consistent peeling quality when preparing pipe surfaces. The tools are designed in such a way that pipes of different diameters can be prepared for installation in no time at all.

Pre-insulated valves

GF Piping Systems' pre-insulated valves are an integral part of the COOL-FIT system and ensure an efficient cooling process. Pre-insulated valves ensure that the entire piping system is thoroughly insulated and perfectly sealed.

Pre-insulated fittings

When creating branch lines, pre-insulated fittings make installation much easier. The fittings cover multiple dimensions as well as elbows, tees, reductions and transitions.



Bridging big to small dimensions

The COOL-FIT 4.0 Push System is an addition to the existing system COOL-FIT 4.0, by extending the product range with smaller piping dimensions to reach tanks and other consumers.

COOL-FIT Weld-in port

The COOL-FIT Weld-in port simplifies the installation of additional sensors and branches at any location on the pipe.

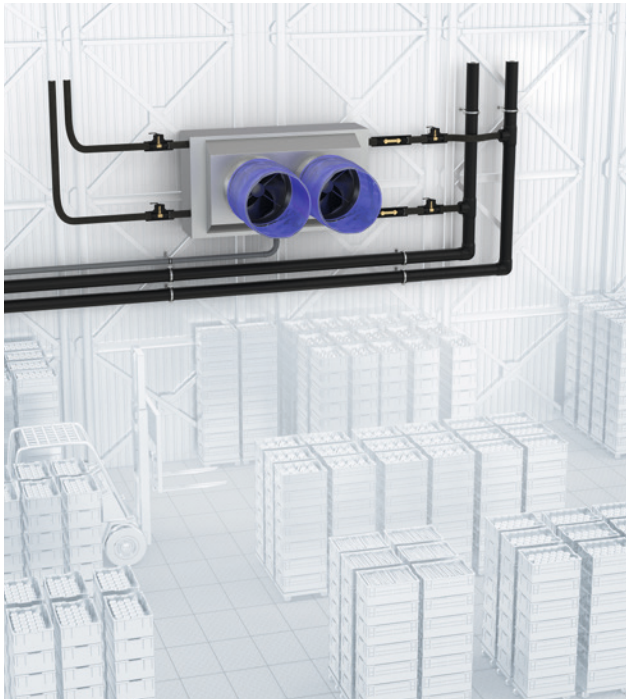


Applications

Commercial and industrial refrigeration

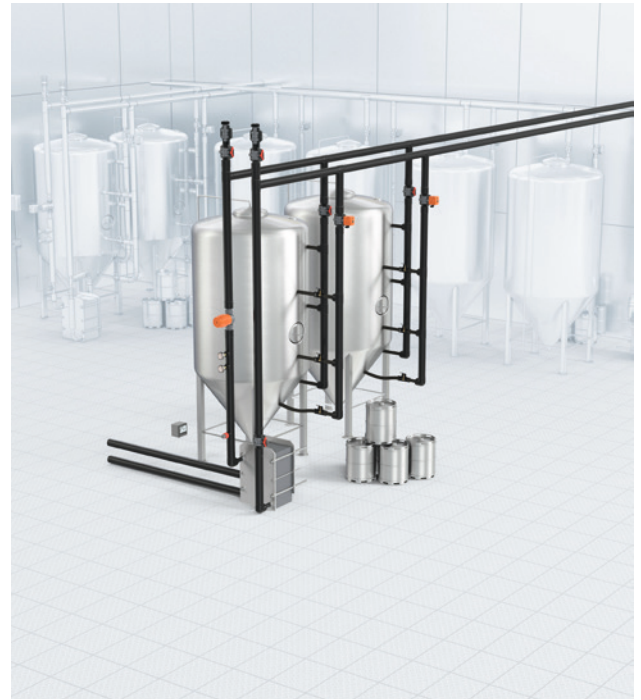
COOL-FIT 4.0 optimizes any commercial or industrial refrigeration set-up in food and beverage applications and any outdoor installations.





Food and beverage storage

Reliable 24/7 control of temperature and humidity are essential to ensure the supply chain of foods and beverages.



Beverage process cooling

The perfect solution for non-stop process cooling in humid environments.



Process Cooling

Production processes require stable temperatures for machinery. Reliable and maintenance-free cooling systems help to make production more efficient.



Industrial A/C - Outdoor application

Up to 25 years of maintenance-free lifespan for rooftop installations, where the piping of chillers and condenser units are exposed to various weather conditions.

References

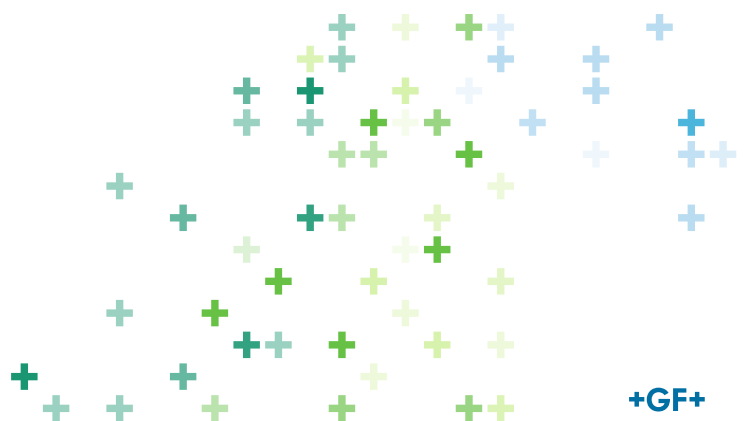
Reliable systems for sustainable processes – approved by the markets

At GF Piping Systems, we use cutting-edge technology designed for versatile use in cooling applications. It combines corrosion and maintenance-free components with a reliable and efficient factory pre-insulated system. We've successfully delivered more than 500 customer projects in multiple industries and installed more than 500,000 kilometers of COOL-FIT pipe globally.



Bischofszell Nahrungsmittel AG, Bischofszell, Switzerland

The Swiss Bischofszell Nahrungsmittel (BINA) is a leading manufacturer of convenience and fruit products as well as instant meals and beverages for retailers, industry, bulk consumers, and export. Its operation poses the highest demands on the cooling system – to keep the cooling chain of the foods intact at all times, pipes carry a glycol mixture. With the COOL-FIT 4.0 system the food manufacturer has now modernized its cooling system during ongoing operation.



Zonzo Estate - The Yarra Valley, Yarra Glen, Australia

In late 2019, Zonzo Estate began converting an empty warehouse into a brand-new winery with the aim of producing the best drop possible. The cooling circuit uses a mixture of glycol and water circulating at a temperature of -5°C and 4 bar of pressure and is supported by 200 kW of chiller capacity. Thanks to the preinsulated piping, it looks beautiful and has incredible energy efficiency, with minimal transfer and energy loss.



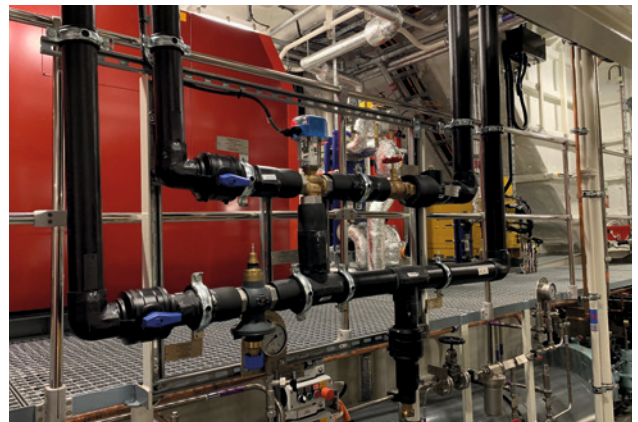
Erusbacher & Paul, Villmergen, Switzerland

Erusbacher & Paul brewery produces 16 different types of beer, totaling 6,000 hectoliters each year. The company sought an efficient, hygienic, and visually appealing pipe cooling system for its new building. They ultimately chose the pre-insulated COOL-FIT system for its fast and simple installation, robustness, and ease of cleaning. During operation, they also found that condensation did not form at any point, providing an additional advantage.



Fassmer Shipyard, Germany

Using COOL-FIT, GF Piping Systems' pre-insulated plastic piping system, Fr. Fassmer GmbH & Co. KG, a leading German shipyard for specialized high-performance vessels, addressed a condensation issue in the HVAC piping system. The solution, used in one of their latest projects, also brought several other benefits and efficiencies to the customer's operations.



Champinter Soc. Cooperativa, Villamalea, Spain

Champinter, a mushroom production and processing cooperative, was looking to expand its facilities and needed a new piping system to meet the strict temperature and humidity requirements for their crops. COOL-FIT meets all the technical requirements for stable growing conditions and has reduced costs for the customer thanks to its quick and simple installation, durability, and reliability; radically reducing maintenance costs.



Sealing lip

For vapor tight seal between the fitting and the pipe without using glue, silicon or shrink sleeves.

Pre-insulated pipe

For fast installation, pipes are prepared in bars with free, peeled and protected ends. The GF foam removal tool allows fast preparation of free ends for shorter sections.

Welding indicator

For indication of a successful weld and haptic inspection after the welding process.

Welding wires

Automated welding process for a safe connection of fitting and pipe.

Tracking code

For a guided and tracked welding process.

3-in-1 Media Pipe - Insulation - Jacket

Confident and efficient installation

Experience confident installations with COOL-FIT, where safety, simplicity, and speed are paramount. Our innovative COOL-FIT Weld-in port streamlines project planning and installation, ensuring ease at every step.

Joining our COOL-FIT System is effortless with electrofusion technology, where fittings are swiftly heated by electric current, melting and fusing the surrounding material for a secure connection. Compared to traditional methods, this

process is in average 50% faster, minimizing the risk of leaks. With all welding data conveniently stored, project documentation is a breeze. The COOL-FIT Push System provides mechanical push fittings and bendable pipe to connect the cooling loop to fan coils or tanks without efforts. Enjoy ultimate flexibility in your projects with the COOL-FIT Weld-in port, simplifying the addition of sensors or branches across various pipe sizes. Experience hassle-free installations and enhanced functionality with COOL-FIT's customer-centric solutions.



Fixation

Easy fixation by use of standard clamps for plastic pipe. No cold clamps required.

Pre-insulated fitting

For fast and easy installation thanks to pre-insulation. No manual post-insulation required.



Learn how to make the perfect weld in the COOL-FIT video tutorial.

gfps.com/cool-fit

Minimal environmental impact

COOL-FIT leads the way with its efficient thermal insulation and low CO₂ emission during its entire life cycle.

Global cooling demand is expected to triplicate by 2050 at the current ratio*, which leaves our industries with the challenge of rising energy demand. As a company that is active worldwide, it is GF Piping Systems' mission to show our commitment to sustainability by supporting our customers' success with innovative, energy-saving solutions making the collective global footprint more sustainable.

COOL-FIT environmental benefits

- COOL-FIT produces a lower environmental impact on all impact categories (compared to conventional installations).
- Saves at least 30% of thermal energy compared to traditional cooling systems, drastically reducing operating costs and CO₂ emissions.
- Non-corrosive, with at least 25-year lifetime leading to additionally saved resources related to maintenance, repairs and replacements.
- Helps achieve relevant green building declarations like DGNB, BREEAM, and LEED.
- Free of HBCD, halogens and halogenated blowing agents. It contains no chlorinated paraffins and neither lead nor tin.
- Contains no other substance of very high concern according to the REACH criteria of the European Chemicals Agency or any candidate substance.
- Strict quality management (ISO 9001) and health and safety management (OHSAS 18001) during production. GF Piping Systems is certified according to ISO 14001 for its environmental management system.

*<https://unfccc.int/event/unep-launch-of-global-cooling-pledge-and-global-cooling-watch-report-keeping-it-chill-how-to-meet>



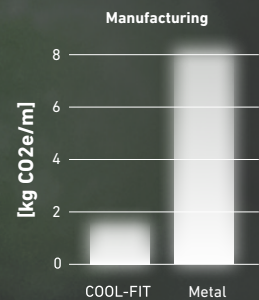
Check sustainable certificates

COOL-FIT for the environment

When comparing the lifecycle of post-insulated metal pipes, which are the most commonly used solution in cooling loops worldwide, COOL-FIT consistently emerges as a robust alternative for significantly reducing greenhouse gas emissions (GHG) in your project.

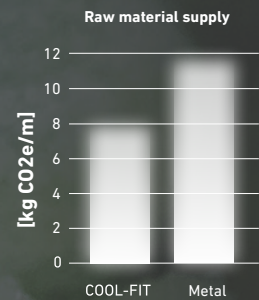
80%

less GHG emissions due to significantly less energy-intensive production process.



30%

less GHG emissions than metal due to less energy intense raw material extraction process.



25 years

of service life without any replacements.



Find out more

System specifications

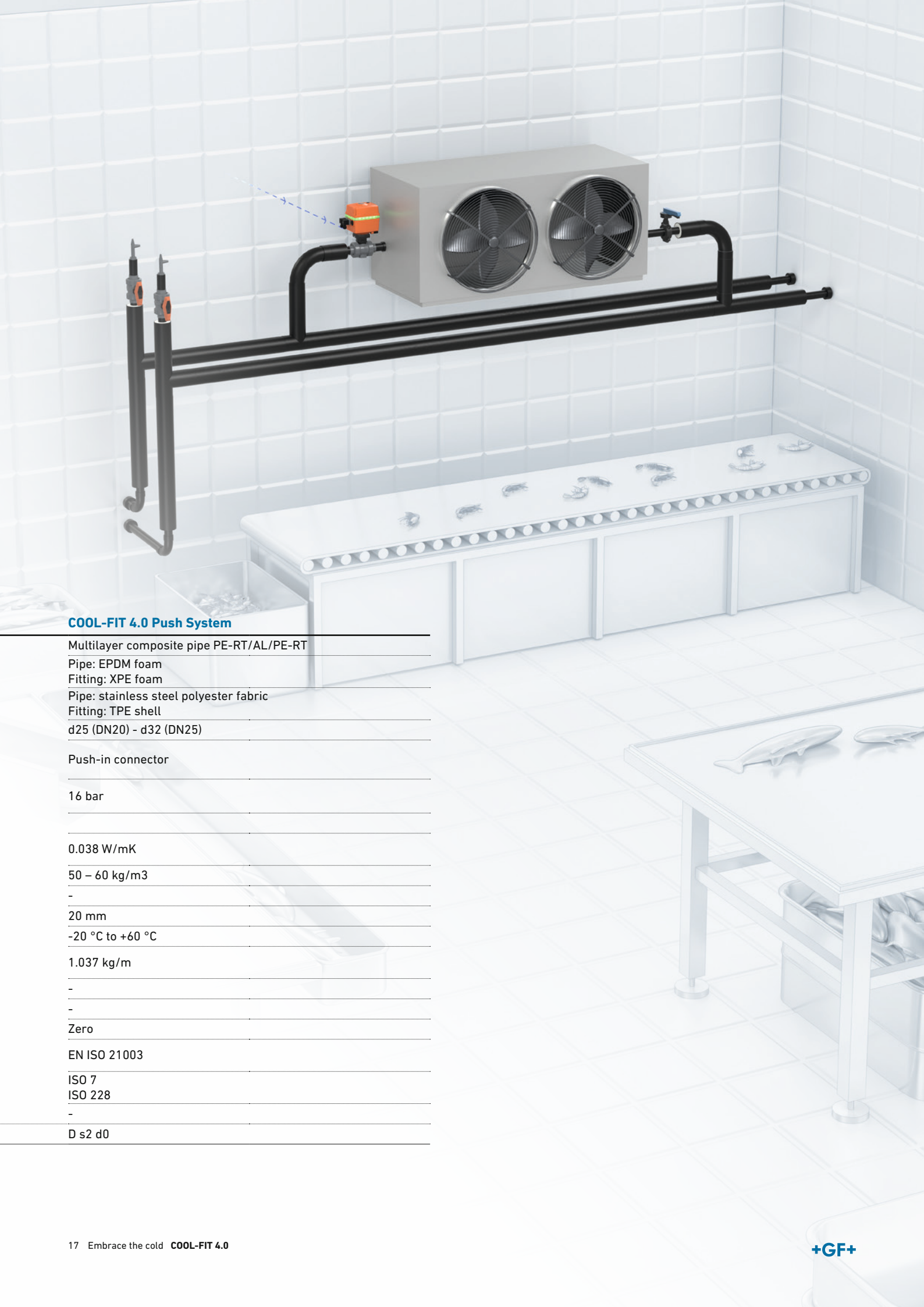
Specified for your application

With COOL-FIT, GF Piping Systems offers a unique, top-notch piping system solution, including pre-insulated pipes, fittings, valves, flexible hoses, and tools. The system is available in a standard version or with a higher fire classification (COOL-FIT 4.0F), to withstand even harsher conditions.

System properties

		COOL-FIT 4.0	COOL-FIT 4.0F
Materials *	Medium pipe	PE100	PE100
	Insulation	GF HE foam, halogen-free, closed-cell	GF HE foam, halogen-free, closed-cell
	Outer jacket	Pipe: HDPE, Fitting: GF-HE	Flame retardant - GF-FR
Dimensions		d32 mm (DN25) – d450 mm (DN450)	d160mm (DN150) - d225mm (DN200)
Connection technology		Electrofusion	Electrofusion
Nominal pressure	16 bar, SDR 11	d32 DN25 – d450 DN450	–
	10 bar, SDR 17	d160 DN150 – d450 DN450	d160 DN150 + d225 DN200
Insulation	Thermal conductivity λ at 20°C	≤ 0.022 W/mK (d32 – d110), ≤ 0.026 W/mK (d160 – d450)	≤ 0.026 W/mK
	Density	≥ 70 kg/m ³	≥ 70 kg/m ³
	Foam cell size	max. \varnothing 0.5 mm	max. \varnothing 0.5 mm
	Nominal thickness	20 mm	40 mm
Temperature	Medium	– 50 °C to +60 °C	0 °C to +60 °C
Weight (without medium)	Pipe d32 mm	1.39 kg/m	
	Pipe d225 mm	16.42 kg/m	19.84 kg/m
Environment	Resistance	Moisture- and vapor-tight	Moisture- and vapor-tight
	Ozone Depletion Potential (ODP)	Zero	Zero
Standards	Pipes & Fittings	Plastic piping systems for industrial applications – Metric series	Plastic piping systems for industrial applications – Metric series
	Threads	Fittings	Fittings
	Valves	Industrial valves	Industrial valves
Fire classification	EN 13501-1	E	B-s2, d0

* All three materials are firmly bonded together.



COOL-FIT 4.0 Push System

Multilayer composite pipe PE-RT/AL/PE-RT

Pipe: EPDM foam

Fitting: XPE foam

Pipe: stainless steel polyester fabric

Fitting: TPE shell

d25 (DN20) - d32 (DN25)

Push-in connector

16 bar

0.038 W/mK

50 – 60 kg/m³

-

20 mm

-20 °C to +60 °C

1.037 kg/m

-

-

Zero

EN ISO 21003

ISO 7

ISO 228

-

D s2 d0

One partner from planning to commissioning

With Specialized Solutions, GF Piping Systems supports the design and installation of state of the art plastic piping systems, so that owners and planners can concentrate on their daily business without interruption. GF Piping Systems is present every step of the way, from providing planning support on new projects to testing the condition of old systems.

More information at
gfps.com/specialized-solutions



Custom Product Design and Prefabrication

Having your individual needs and application in focus, our customizing teams forge the solution that fits you best, developing custom-made parts to complete systems or special solutions produced in small series, individual consulting and off-site prefabrication. Through our global network of flexible locations, we offer a wide range of comprehensive solutions. Tailored innovation, inspired by you.



Digital Libraries

The libraries cover three key areas for designing, creating, and maintaining a project: Building Information Modeling, the Plant Design Software, and the CAD Library helping you reduce costs and construction times while ensuring design accuracy and integrity. Reduce time and effort while ensuring design accuracy and integrity.





Engineering

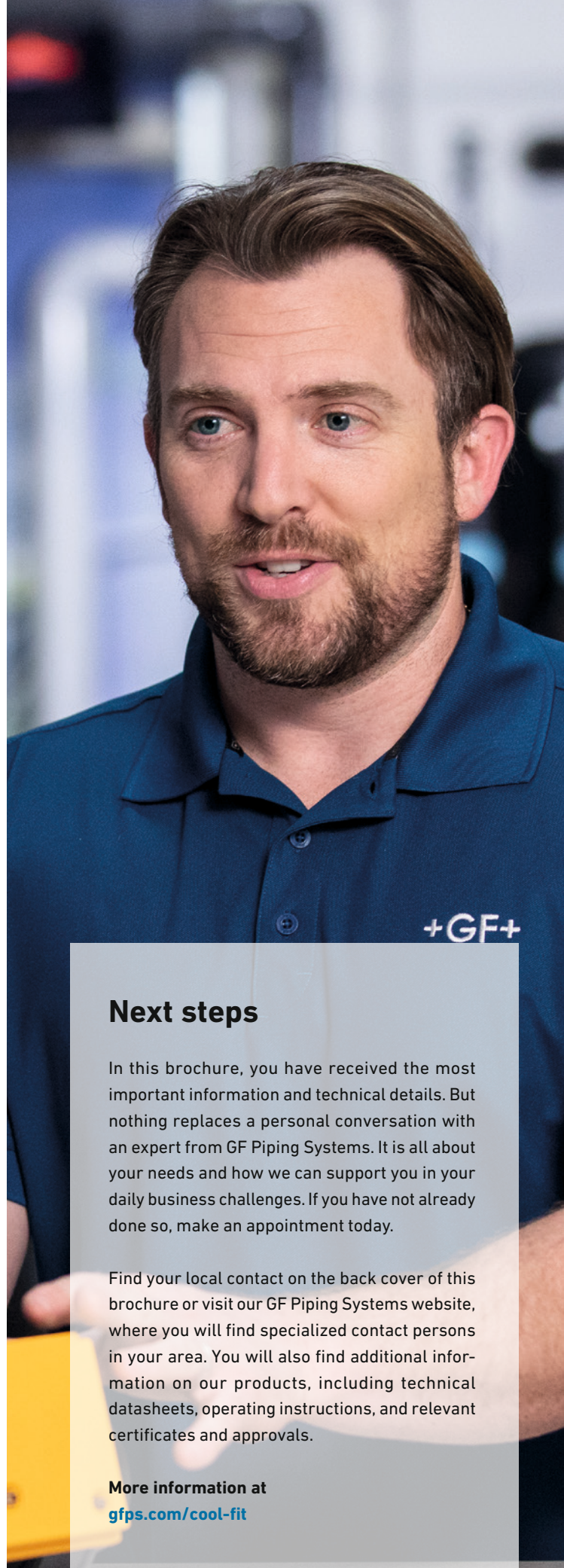
Increase the efficiency of your project with tailor-made analysis packages from GF Piping Systems. Minimize project risks by diminishing incorrect calculations or wrong material selection. Rely on GF's experience in fast project implementation and choose our durable, safe, and reliable piping systems delivery. Established knowledge, guiding you through.



Cooling Tool-Box

The cooling calculation tool from GF Piping Systems supports the dimensioning and design of the secondary circuit. The cooling calculation tool includes calculation functions for expansion/ contraction, energy saving, surface temperatures, pipe dimensioning, pressure losses, CO2 footprint, and many more.

Use the online calculator
gfps.com/cooling-tools



Next steps

In this brochure, you have received the most important information and technical details. But nothing replaces a personal conversation with an expert from GF Piping Systems. It is all about your needs and how we can support you in your daily business challenges. If you have not already done so, make an appointment today.

Find your local contact on the back cover of this brochure or visit our GF Piping Systems website, where you will find specialized contact persons in your area. You will also find additional information on our products, including technical datasheets, operating instructions, and relevant certificates and approvals.

More information at
gfps.com/cool-fit

Product range

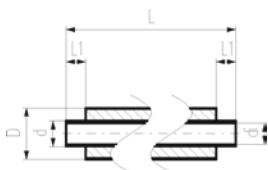
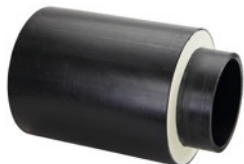
COOL-FIT 4.0



Table of contents

COOL-FIT 4.0 Pipes and Fittings	22
COOL-FIT 4.0 Transition Fittings	37
COOL-FIT 4.0 Weld-in Port	54
COOL-FIT 4.0 Flexible Hoses	56
COOL-FIT 4.0 Valves	57
COOL-FIT 4.0 Accessories	70
COOL-FIT 4.0 Heat Tracing	81
COOL-FIT 4.0 Tools	83
COOL-FIT 4.0 Spare Parts	87
COOL-FIT 4.0 Push System Pipes and Fittings	93
COOL-FIT 4.0 Push System Valves	95
COOL-FIT 4.0 Push System Accessories	97
COOL-FIT 4.0 Push System Tools	99

COOL-FIT 4.0 Pipes and Fittings



COOL-FIT 4.0 Pipe d32-d450

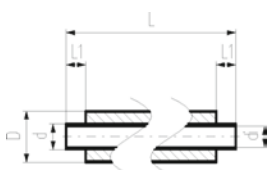
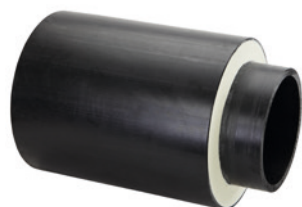
Model:

- Pre-insulated PE100 SDR11/17 metric
- Insulation made from GF HE foam
- Impact resistant. Color: black
- Length: 5m for d32-d225, 5.9m for d250-d450
- With free ends for electrofusion

Note:

Peeling of free ends necessary for dimensions d250 - d450

d (mm)	D (mm)	DN (mm)	SDR	PN (bar)	Code	Weight (kg/m)	di (mm)	L (mm)	L1 (mm)	closest inch (inch)
32	90	25	11	16	738 173 108	1.411	26.2	5000	36	1
40	110	32	11	16	738 173 109	2.054	32.6	5000	40	1 ½
50	110	40	11	16	738 173 110	2.221	40.8	5000	44	1 ½
63	125	50	11	16	738 173 111	2.987	51.4	5000	48	2
75	140	65	11	16	738 173 112	3.757	61.4	5000	55	2 ½
90	160	80	11	16	738 173 113	4.819	73.6	5000	62	3
110	180	100	11	16	738 173 114	6.200	90.0	5000	72	4
140	225	125	11	16	738 173 116	9.676	114.6	5000	84	5
160	250	150	17	10	738 173 117	9.921	141.0	5000	90	6
225	315	200	17	10	738 173 120	16.620	198.2	5000	110	8
250	355	250	17	10	738 173 021	18.180	220.4	5900	123	10
280	400	250	17	10	738 173 022	22.640	246.8	5900	126	10
315	450	300	17	10	738 173 023	28.510	277.6	5900	133	12
355	500	350	17	10	738 173 024	35.350	312.8	5900	148	14
400	560	400	17	10	738 173 125	44.070	352.6	5900	150	16
450	630	450	17	10	738 173 126	55.490	396.6	5900	165	18



COOL-FIT 4.0 Pipe d160-d450 SDR17 11.9m length

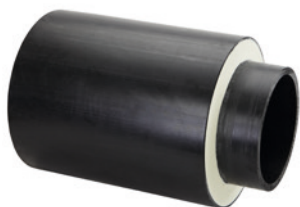
Model:

- Pre-insulated PE100 SDR 17 metric
- Insulation made from GF HE foam
- Outer jacket impact resistant. Color: black
- Length: 11.9m
- With free ends for electrofusion

Note:

Consider transport and handling possibilities
Peeling of free ends necessary prior to jointing
Make to order

d (mm)	D (mm)	DN (mm)	SDR	PN (bar)	Code	Weight (kg/m)	di (mm)	L (mm)	L1 (mm)	closest inch (inch)
160	250	150	17	10	738 173 187	9.921	141.0	11900	90	6
225	315	200	17	10	738 173 190	16.620	198.2	11900	110	8
250	355	250	17	10	738 173 191	18.180	220.4	11900	123	10
280	400	250	17	10	738 173 192	22.640	246.8	11900	126	10
315	450	300	17	10	738 173 193	28.510	277.6	11900	133	12
355	500	350	17	10	738 173 194	35.350	312.8	11900	148	14
400	560	400	17	10	738 173 195	44.070	352.6	11900	150	16
450	630	450	17	10	738 173 196	55.490	396.6	11900	165	18



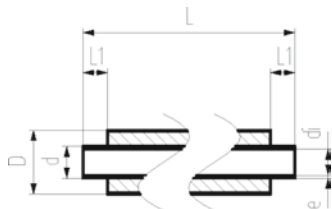
COOL-FIT 4.0 Pipe d160-d450 SDR11

Model:

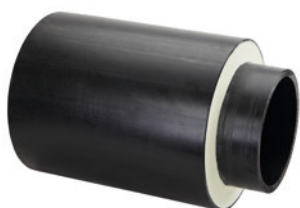
- Pre-insulated PE100 SDR11 metric
- Insulation made from GF HE foam
- Outer jacket impact resistant. Color: black
- Length: 5m for d160+d225, 5.9m for d250-d450
- With free ends for electrofusion

Note:

Dimensions d250 - d450 need to be peeled prior to jointing.
Make to order



d (mm)	D (mm)	DN (mm)	SDR	PN (bar)	Code	Weight (kg/m)	di (mm)	L (mm)	L1 (mm)	closest inch (inch)
160	250	150	11	16	738 173 267	12.213	130.8	5000	90	6
225	315	200	11	16	738 173 270	21.169	184.0	5000	110	8
250	355	250	11	16	738 173 271	24.681	204.6	5900	123	10
280	400	250	11	16	738 173 272	31.731	229.2	5900	126	10
315	450	300	11	16	738 173 273	39.333	257.8	5900	133	12
355	500	350	11	16	738 173 274	49.614	290.6	5900	148	14
400	560	400	11	16	738 173 275	62.811	327.4	5900	150	16
450	630	450	11	16	738 173 276	76.431	368.2	5900	165	18



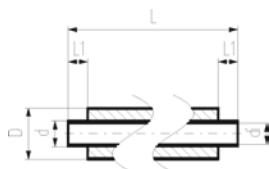
COOL-FIT 4.0 Pipe d160-d450 SDR11 11.9m length

Model:

- Pre-insulated PE100 SDR11 metric
- Insulation made from GF HE foam
- Outer jacket impact resistant. Color: black
- Length: 11.9m
- With free ends for electrofusion

Note:

Consider transport and handling possibilities
Peeling of free ends necessary prior to jointing
Make to order



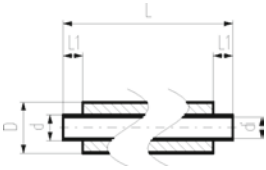
d (mm)	D (mm)	DN (mm)	SDR	PN (bar)	Code	Weight (kg/m)	di (mm)	L (mm)	L1 (mm)	closest inch (inch)
160	250	150	11	16	738 173 287	12.213	130.8	11900	90	6
225	315	200	11	16	738 173 290	21.169	184.0	11900	110	8
250	355	250	11	16	738 173 291	24.681	204.6	11900	123	10
280	400	250	11	16	738 173 292	31.731	229.2	11900	126	10
315	450	300	11	16	738 173 293	39.333	257.8	11900	133	12
355	500	350	11	16	738 173 294	49.614	290.6	11900	148	14
400	560	400	11	16	738 173 295	62.811	327.4	11900	150	16
450	630	450	11	16	738 173 296	76.431	368.2	11900	165	18



COOL-FIT 4.0F Pipe Fire retardant

Model:

- Pre-insulated PE100 SDR 17 metric
- Insulation made from GF HE foam
- Fire retardant jacket. Color: black
- With free ends for electrofusion



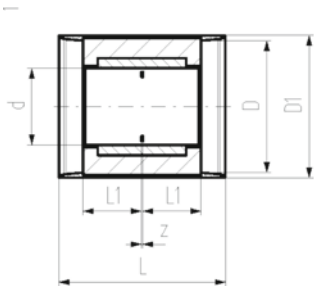
d (mm)	D (mm)	DN (mm)	SDR	PN (bar)	Code	Weight (kg/m)	di (mm)	L (mm)	L1 (mm)	closest inch (inch)
160	250	150	17	10	738 173 317	9.921	141.0	5000	90	6
225	315	200	17	10	738 173 320	16.620	198.2	5000	110	8



COOL-FIT 4.0 Coupler d32-d225

Model:

- Pre-insulated PE100 SDR 11 metric
- Insulation made from GF HE foam
- Impact resistant. Color: black
- Electrofusion fitting with integrated sealing lip, for a moisture-proof and vapour tight sealing



d (mm)	D (mm)	DN (mm)	SDR	PN (bar)	Code	Weight (kg)	D1 (mm)	L (mm)	L1 (mm)	z (mm)
32	90	25	11	16	738 913 108	0.179	97	127	36	5
40	110	32	11	16	738 913 109	0.129	117	133	40	3
50	110	40	11	16	738 913 110	0.169	117	141	44	3
63	125	50	11	16	738 913 111	0.240	132	149	48	3
75	140	65	11	16	738 913 112	0.520	147	163	55	3
90	160	80	11	16	738 913 113	0.750	168	178	62	4
110	180	100	11	16	738 913 114	0.831	188	198	72	4
140	225	125	11	16	738 913 116	1.565	233	221	84	3
160	250	150	11	16	738 913 117	1.726	258	233	90	3
225	315	200	11	16	738 913 120	3.783	324	275	110	5



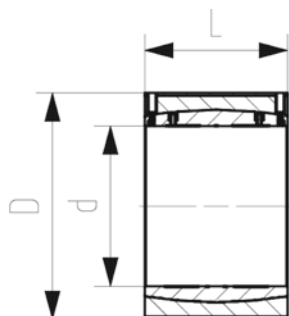
COOL-FIT 4.0 Coupler d250-d450

Model:

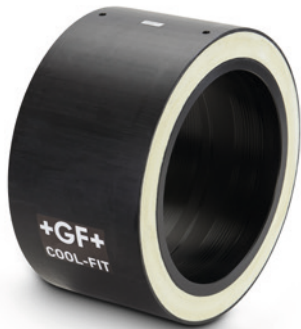
- Pre-insulated PE100 SDR 17 metric
- Insulation made from GF HE foam
- Outer jacket impact resistant. Color: black

Note:

Insulation for weld indicators and components for water- und vapour tight sealing need to be ordered separately



d (mm)	D (mm)	DN (mm)	SDR	PN (bar)	Code	Weight (kg)	L (mm)
250	355	250	17	10	738 911 821	6.290	247
280	400	250	17	10	738 911 822	8.020	252
315	450	300	17	10	738 911 823	9.110	267
355	500	350	17	10	738 911 824	13.780	290
400	560	400	17	10	738 911 875	23.450	294
450	630	450	17	10	738 911 876	22.590	326



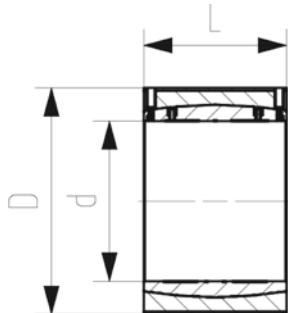
COOL-FIT 4.0 Coupler d250-d450, SDR11

Model:

- Pre-insulated PE100 SDR11 metric
- Insulation made from GF HE foam
- Outer jacket impact resistant. Color: black

Note:

Insulation for weld indicators and components for water- und vapour tight sealing need to be ordered separately
Make to order



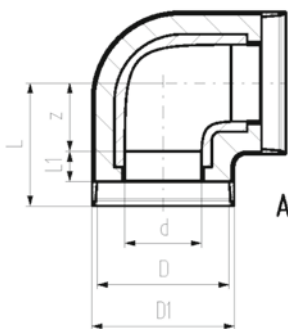
d (mm)	D (mm)	DN (mm)	SDR	PN (bar)	Code	Weight (kg)	L (mm)
250	355	250	11	16	738 913 271	6.352	247
280	400	250	11	16	738 913 272	9.910	252
315	450	300	11	16	738 913 273	11.150	267
355	500	350	11	16	738 913 274	17.356	290
400	560	400	11	16	738 913 275	23.770	294
450	630	450	11	16	738 913 276	31.290	326



COOL-FIT 4.0 Elbow 90° d32-d225

Model:

- Pre-insulated PE100 SDR11, metric
- Insulation made from GF HE foam
- Outer jacket impact resistant. Color: black
- A: Electrofusion Fitting with integrated sealing lip, for a water and vapour tight sealing



d (mm)	D (mm)	DN (mm)	SDR	PN (bar)	Code	Weight (kg)	D1 (mm)	L (mm)	L1 (mm)	z (mm)	Type
32	90	25	11	16	738 103 108	0.255	97	81	36	20	A
40	110	32	11	16	738 103 109	0.177	117	88	40	23	A
50	110	40	11	16	738 103 110	0.250	117	99	44	30	A
63	125	50	11	16	738 103 111	0.372	132	107	48	34	A
75	140	65	11	16	738 103 112	0.800	147	120	55	40	A
90	160	80	11	16	738 103 113	1.500	168	150	62	63	A
110	180	100	11	16	738 103 114	1.950	188	174	72	77	A
140	225	125	11	16	738 103 116	3.707	233	196	84	87	A
160	250	150	11	16	738 103 117	5.200	258	220	90	105	A
225	315	200	11	16	738 103 120	12.400	324	345	110	210	A



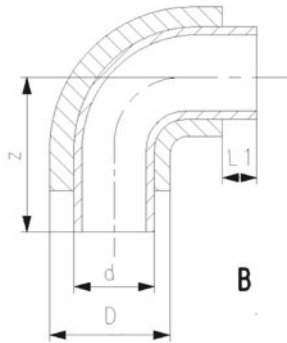
**COOL-FIT 4.0 Bend 90°
d250-d450**

Model:

- Pre-insulated PE100 SDR 17 metric
- Insulation made from GF HE foam
- Outer jacket impact resistant. Color: black
- B: Spigot Fitting with free end (separate electrofusion fitting needed for jointing)

Note:

Peeling of free ends necessary prior to jointing



d (mm)	D (mm)	DN (mm)	SDR	PN (bar)	Code	Weight (kg)	L1 (mm)	z (mm)	Type
250	355	250	17	10	738 003 121	11.800	123	375	B
280	400	250	17	10	738 003 122	16.560	126	430	B
315	450	300	17	10	738 003 123	28.800	133	470	B
355	500	350	17	10	738 003 124	25.000	148	900	B
400	560	400	17	10	738 003 175	59.640	150	980	B
450	630	450	17	10	738 003 176	79.200	165	1070	B



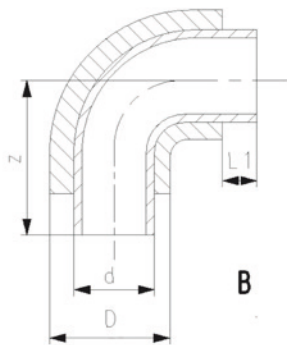
**COOL-FIT 4.0 Bend 90°
d250-d450, SDR11**

Model:

- Pre-insulated PE100 SDR11 metric
- Insulation made from GF HE foam
- Outer jacket impact resistant. Color: black
- B: Spigot Fitting with free end (separate electrofusion fitting needed for jointing)

Note:

Peeling of free ends necessary prior to jointing
Make to order



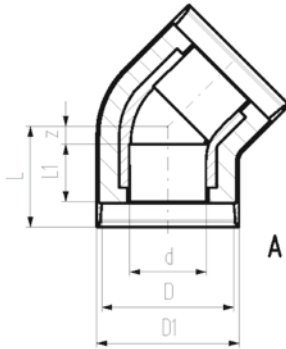
d (mm)	D (mm)	DN (mm)	SDR	PN (bar)	Code	Weight (kg)	L1 (mm)	z (mm)	Type
250	355	250	11	16	738 003 271	11.900	123	375	B
280	400	250	11	16	738 003 272	18.252	126	430	B
315	450	300	11	16	738 003 273	28.750	133	470	B
355	500	350	11	16	738 003 274	65.000	148	900	B
400	560	400	11	16	738 003 275	81.840	150	980	B
450	630	450	11	16	738 003 276	109.900	165	1070	B



COOL-FIT 4.0 Elbow 45° d32-d225

Model:

- Pre-insulated PE100 SDR11, metric
- Insulation made from GF HE foam
- Outer jacket impact resistant. Color: black
- A: Electrofusion Fitting with integrated sealing lip, for a water and vapour tight sealing



d (mm)	D (mm)	DN (mm)	SDR	PN (bar)	Code	Weight (kg)	D1 (mm)	L (mm)	L1 (mm)	z (mm)	closest inch (inch)	Type
32	90	25	11	16	738 153 108	0.108	97	72	36	11	1	A
40	110	32	11	16	738 153 109	0.162	117	76	40	11	1.25	A
50	110	40	11	16	738 153 110	0.218	117	82	44	13	1.5	A
63	125	50	11	16	738 153 111	0.315	132	89	48	16	2	A
75	140	65	11	16	738 153 112	0.650	147	98	55	18	2.5	A
90	160	80	11	16	738 153 113	1.030	168	117	62	30	3	A
110	180	100	11	16	738 153 114	1.270	188	138	72	41	4	A
140	225	125	11	16	738 153 116	2.958	233	157	84	48	5	A
160	250	150	11	16	738 153 117	4.100	258	161	90	46	6	A
225	315	200	11	16	738 153 120	17.603	324	278	110	143	8	A

COOL-FIT 4.0 Bend 45° d250-d450

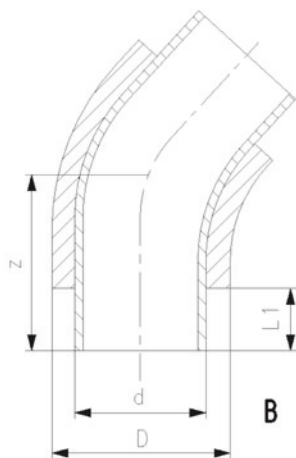


Model:

- Pre-insulated PE100 SDR 17 metric
- Insulation made from GF HE foam
- Outer jacket impact resistant. Color: black
- B: Spigot Fitting with free end (separate electrofusion fitting needed for jointing)

Note:

Peeling of free ends necessary prior to jointing



d (mm)	D (mm)	DN (mm)	SDR	PN (bar)	Code	Weight (kg)	Code	L1 (mm)	z (mm)	Type
250	355	250	17	10	738 053 121	12.840		123	440	B
280	400	250	17	10	738 053 122	18.000		126	460	B
315	450	300	17	10	738 053 123	21.360		133	535	B
355	500	350	17	10	738 053 124	18.720		148	620	B
400	560	400	17	10	738 053 175	43.920		150	650	B
450	630	450	17	10	738 053 176	54.360		165	680	B

COOL-FIT 4.0 Bend 45°
d250-d450, SDR11



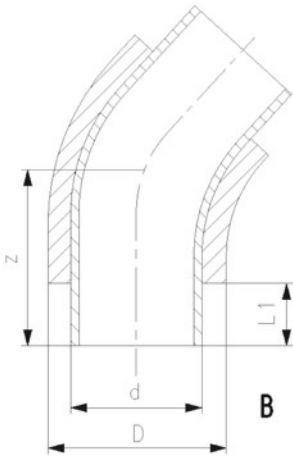
Model:

- Pre-insulated PE100 SDR11 metric
- Insulation made from GF HE foam
- Outer jacket impact resistant. Color: black
- B: Spigot Fitting with free end (separate electrofusion fitting needed for jointing)

Note:

Peeling of free ends necessary prior to jointing
Make to order

d (mm)	D (mm)	DN (mm)	SDR	PN (bar)	Code	Weight (kg)	L1 (mm)	z (mm)	Type
250	355	250	11	16	738 053 271	15.150	123	440	B
280	400	250	11	16	738 053 272	25.000	126	460	B
315	450	300	11	16	738 053 273	28.490	133	535	B
355	500	350	11	16	738 053 274	46.380	148	620	B
400	560	400	11	16	738 053 275	55.820	150	650	B
450	630	450	11	16	738 053 276	78.860	165	680	B



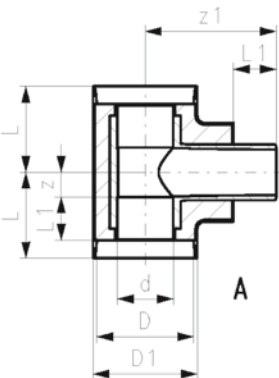
COOL-FIT 4.0 T90° equal
d32-d225



Model:

- Pre-insulated PE100 SDR11, metric
- Insulation made from GF HE foam
- Outer jacket impact resistant. Color: black
- A: Electrofusion Fitting with integrated sealing lip, for a water and vapour tight sealing

d (mm)	D (mm)	DN (mm)	SDR	PN (bar)	Code	Weight (kg)	D1 (mm)	L (mm)	L1 (mm)	z (mm)	z1 (mm)	Type
32	90	25	11	16	738 203 108	0.161	97	79	36	18	118.0	A
40	110	32	11	16	738 203 109	0.257	117	87	40	22	132.0	A
50	110	40	11	16	738 203 110	0.342	117	94	44	25	138.0	A
63	125	50	11	16	738 203 111	0.514	132	103	48	30	154.0	A
75	140	65	11	16	738 203 112	1.000	147	116	55	36	168.0	A
90	160	80	11	16	738 203 113	1.400	168	130	62	43	187.0	A
110	180	100	11	16	738 203 114	2.500	188	154	72	57	207.0	A
140	225	125	11	16	738 203 116	4.627	233	175	84	66	257.3	A
160	250	150	11	16	738 203 117	5.600	258	192	90	77	263.0	A
225	315	200	11	16	738 203 120	16.748	324	355	110	220	337.0	A





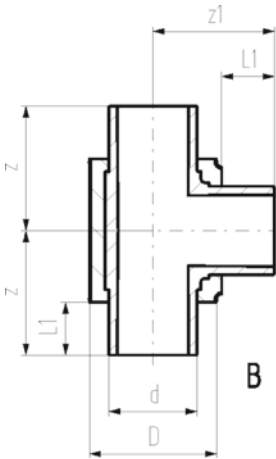
COOL-FIT 4.0 T90° equal
d250-d450, SDR11

Model:

- Pre-insulated PE100 SDR11 metric
- Insulation made from GF HE foam
- Outer jacket impact resistant. Color: black
- B: Spigot Fitting with free end (separate electrofusion fitting needed for jointing)

Note:

Peeling of free ends necessary prior to jointing
 Make to order



d (mm)	D (mm)	DN (mm)	SDR	PN (bar)	Code	Weight (kg)	L1 (mm)	z (mm)	z1 (mm)	Type
250	355	250	11	16	738 203 271	16.100	123	500	500	B
280	400	250	11	16	738 203 272	27.620	126	500	500	B
315	450	300	11	16	738 203 273	29.650	133	500	500	B
355	500	350	11	16	738 203 274	43.400	148	650	700	B
400	560	400	11	16	738 203 275	59.700	150	650	700	B
450	630	450	11	16	738 203 276	91.200	165	700	750	B



COOL-FIT 4.0 T90° equal d250-d450

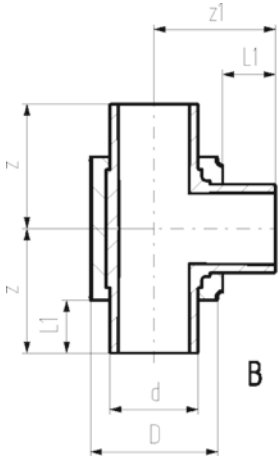
Model:

- Pre-insulated PE100 SDR 17 metric
- Insulation made from GF HE foam
- Outer jacket impact resistant. Color: black
- B: Spigot Fitting with free end (separate electrofusion fitting needed for jointing)

Note:

Peeling of free ends necessary prior to jointing

d	D	DN	SDR	PN	Code	Weight	L1	z	z1	Type
(mm)	(mm)	(mm)		(bar)		(kg)	(mm)	(mm)	(mm)	
250	355	250	17	10	738 203 121	12.000	123	500	500	B
280	400	250	17	10	738 203 122	22.300	126	500	500	B
315	450	300	17	10	738 203 123	21.480	133	500	500	B
355	500	350	17	10	738 203 124	30.600	148	650	700	B
400	560	400	17	10	738 203 175	42.000	150	650	700	B
450	630	450	17	10	738 203 176	67.200	165	700	750	B

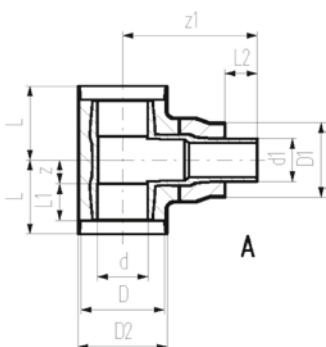


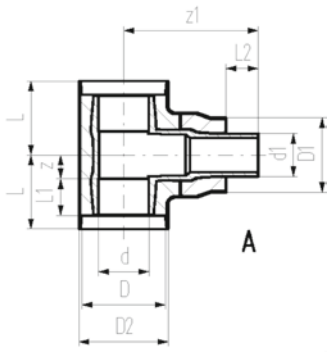
COOL-FIT 4.0 T90° reduced d75 – d225

Model:

- Pre-insulated PE100 SDR11, metric
- Insulation made from GF HE foam
- Outer jacket impact resistant. Color: black
- A: Electrofusion Fitting with integrated sealing lip, for a water and vapour tight sealing

d	d1	D	D1	DN	SDR	PN	Code	Weight
(mm)	(mm)	(mm)	(mm)	(mm)		(bar)		(kg)
75	63	140	125	65	11	16	738 203 218	0.863
90	63	160	125	80	11	16	738 203 222	1.232
90	75	160	140	80	11	16	738 203 223	1.293
110	63	180	125	100	11	16	738 203 227	1.972
110	75	180	140	100	11	16	738 203 228	1.949
110	90	180	160	100	11	16	738 203 229	2.037
140	63	225	125	125	11	16	738 203 240	4.225
140	75	225	140	125	11	16	738 203 241	4.225
140	90	225	160	125	11	16	738 203 242	4.047
140	110	225	180	125	11	16	738 203 243	4.218
160	63	250	125	150	11	16	738 203 447	4.250
160	90	250	160	150	11	16	738 203 449	4.420
160	110	250	180	150	11	16	738 203 450	4.590
160	140	250	225	150	11	16	738 203 251	5.666
160	140	250	200	150	11	16	738 204 251	5.540
225	63	315	125	200	11	16	738 203 264	16.832
225	90	315	160	200	11	16	738 203 266	16.889





d	d1	D	D1	DN	SDR	PN	Code	Weight
(mm)	(mm)	(mm)	(mm)	(mm)		(bar)		(kg)
225	110	315	180	200	11	16	738 203 267	16.805
225	140	315	225	200	11	16	738 203 268	18.909
225	140	315	200	200	11	16	738 204 268	17.100
225	160	315	250	200	11	16	738 203 269	18.500

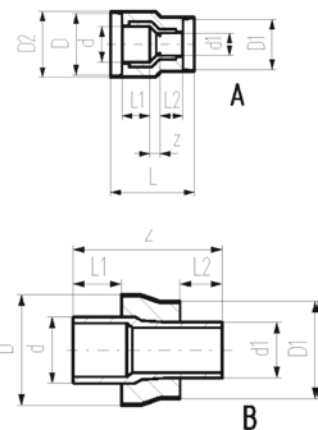
d	d1	D2	L	L1	L2	z	z1	Type
(mm)	(mm)	(mm)	(mm)	(mm)	(mm)	(mm)	(mm)	
75	63	147	116	55	48	36	228.0	A
90	63	168	130	62	48	43	253.0	A
90	75	168	130	62	55	43	252.0	A
110	63	188	154	72	48	57	267.0	A
110	75	188	154	72	55	57	268.0	A
110	90	188	154	72	62	57	268.0	A
140	63	233	175	84	48	66	221.0	A
140	75	233	175	84	55	66	231.0	A
140	90	233	175	84	62	66	234.0	A
140	110	233	175	84	72	66	243.0	A
160	63	258	192	90	48	77	221.0	A
160	90	258	192	90	62	77	235.0	A
160	110	258	192	90	72	77	245.0	A
160	140	258	192	90	84	77	256.1	A
160	140	258	192	90	84	77	340.0	A
225	63	324	355	110	48	220	412.0	A
225	90	324	355	110	62	220	412.0	A
225	110	324	355	110	72	220	412.0	A
225	140	324	355	110	84	220	413.0	A
225	140	324	335	110	84	220	412.0	A
225	160	324	355	110	90	220	396.0	A



COOL-FIT 4.0 Reducer d32-d225

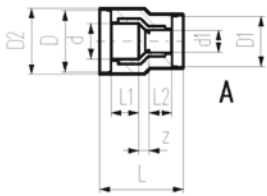
Model:

- Pre-insulated PE100 SDR11, metric
- Insulation made from GF HE foam
- Outer jacket impact resistant. Color: black
- A: Electrofusion Fitting with integrated sealing lip, for a water and vapour tight sealing
- B: Spigot Fitting with free end (separate electrofusion fitting needed for jointing)
- 738 904 351 and 738 904 368 for direct transitions from COOL-FIT 4.0 to COOL-FIT 2.0

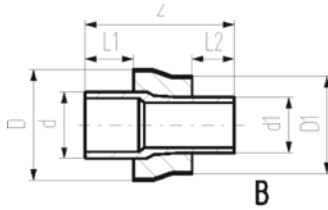


d (mm)	d1 (mm)	D (mm)	D1 (mm)	DN (mm)	SDR	PN (bar)	Code	Weight (kg)
40	32	110	90	32	11	16	738 903 206	0.250
50	32	110	90	40	11	16	738 903 209	0.280
50	40	110	110	40	11	16	738 903 210	0.320
63	32	125	90	50	11	16	738 903 212	0.217
63	40	125	110	50	11	16	738 903 213	0.232
63	50	125	110	50	11	16	738 903 214	0.243
75	63	140	125	65	11	16	738 903 318	0.264
90	63	160	125	80	11	16	738 903 322	0.387
90	75	160	140	80	11	16	738 903 323	0.416
110	63	180	125	100	11	16	738 903 327	0.566
110	75	180	140	100	11	16	738 903 328	0.577
110	90	180	160	100	11	16	738 903 329	0.644
140	63	225	125	125	11	16	738 903 340	1.118
140	75	225	140	125	11	16	738 903 341	1.202
140	90	225	160	125	11	16	738 903 342	1.251
140	110	225	180	125	11	16	738 903 343	1.271
160	63	250	125	150	11	16	738 903 347	1.298
160	90	250	160	150	11	16	738 903 349	1.323
160	110	250	180	150	11	16	738 903 350	1.362
160	140	250	225	150	11	16	738 903 351	1.845
160	140	250	200	150	11	16	738 904 351	1.664
225	63	315	125	200	11	16	738 903 364	2.960
225	90	315	160	200	11	16	738 903 366	3.018
225	110	315	180	200	11	16	738 903 367	3.079
225	140	315	225	200	11	16	738 903 368	3.443
225	140	315	200	200	11	16	738 904 368	3.172
225	160	315	250	200	11	16	738 903 369	3.550

d (mm)	d1 (mm)	D2 (mm)	L (mm)	L1 (mm)	L2 (mm)	z (mm)	Type
40	32	117	143	40	36	17	A
50	32	117	151	44	36	21	A
50	40	117	149	44	40	15	A
63	32	132	160	48	36	26	A
63	40	132	159	48	40	21	A
63	50	132	159	48	44	17	A
75	63			55	48	170	B
90	63			62	48	190	B
90	75			62	55	189	B
110	63			72	48	204	B
110	75			72	55	205	B
110	90			72	62	205	B
140	63			84	48	225	B
140	75			84	55	237	B
140	90			84	62	238	B
140	110			84	72	233	B
160	63			90	48	244	B
160	90			90	62	244	B
160	110			90	72	242	B
160	140			90	84	257	B
160	140			90	84	257	B
225	63			110	48	295	B



d	d1	D2	L	L1	L2	z	Type
(mm)	(mm)	(mm)	(mm)	(mm)	(mm)	(mm)	
225	90			110	62	295	B
225	110			110	72	295	B
225	140			110	84	296	B
225	140			110	84	296	B
225	160			110	90	279	B



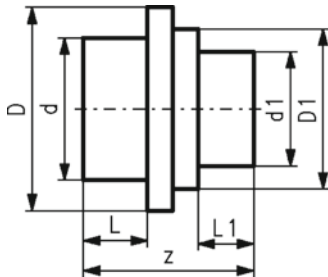
COOL-FIT 4.0 Reducer d250-d450

Model:

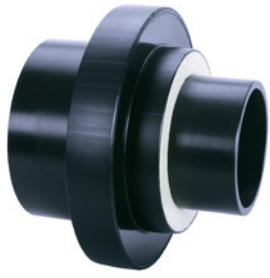
- Pre-insulated PE100 SDR 17 metric
- Insulation made from GF HE foam
- Outer jacket impact resistant. Color: black
- B: Spigot Fitting with free end (separate electrofusion fitting needed for jointing)

Note:

Peeling of free ends necessary prior to jointing



d	d1	D	D1	DN	SDR	PN	Code	Weight	L	L1	z	Type
(mm)	(mm)	(mm)	(mm)	(mm)		(bar)		(kg)	(mm)	(mm)	(mm)	
250	225	355	315	250	17	10	738 903 825	2.800	123	110	332	B
280	225	400	315	250	17	10	738 903 829	4.700	126	110	335	B
280	250	450	355	250	17	10	738 903 830	5.100	133	110	365	B
315	225	450	315	300	17	10	738 903 836	7.100	126	110	340	B
315	250	450	355	300	17	10	738 903 837	7.400	133	123	365	B
315	280	450	400	300	17	10	738 903 838	6.800	133	126	365	B
355	250	500	355	350	17	10	738 903 844	8.200	148	123	390	B
355	280	500	400	350	17	10	738 903 845	7.700	148	126	390	B
355	315	500	450	350	17	10	738 903 846	8.300	148	133	390	B
400	280	560	400	400	17	10	738 903 853	9.100	150	126	415	B
400	315	560	450	400	17	10	738 903 854	11.400	150	133	420	B
400	355	560	500	400	17	10	738 903 855	11.000	150	148	405	B
450	280	630	400	450	17	10	738 903 862	13.200	165	126	390	B
450	315	630	450	450	17	10	738 903 863	13.600	165	133	390	B
450	355	630	500	450	17	10	738 903 864	13.700	165	148	393	B
450	400	630	560	450	17	10	738 903 865	14.800	165	150	395	B



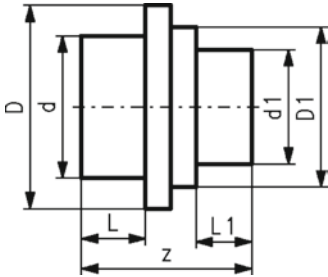
COOL-FIT 4.0 Reducer
d250-d450, SDR11

Model:

- Pre-insulated PE100 SDR11 metric
- Insulation made from GF HE foam
- Outer jacket impact resistant. Color: black
- B: Spigot Fitting with free end (separate electrofusion fitting needed for jointing)

Note:

Peeling of free ends necessary prior to jointing
 Make to order



d (mm)	d1 (mm)	D (mm)	D1 (mm)	DN (mm)	SDR	PN (bar)	Code	Weight (kg)	L (mm)	L1 (mm)	z (mm)	Type
250	225	355	315	250	11	16	738 903 925	5.365	123	110	332	B
280	225	400	315	250	11	16	738 903 929	6.750	126	110	335	B
280	250	400	355	250	11	16	738 903 930	7.228	126	123	340	B
315	225	450	315	300	11	16	738 903 936	8.690	133	110	365	B
315	250	450	355	300	11	16	738 903 937	9.340	133	123	365	B
315	280	450	400	300	11	16	738 903 939	9.660	133	126	365	B
355	250	500	355	350	11	16	738 903 944	10.218	148	123	390	B
355	280	500	400	350	11	16	738 903 945	10.472	148	126	390	B
355	315	500	450	350	11	16	738 903 946	10.960	148	133	390	B
400	280	560	400	400	11	16	738 903 953	11.590	150	126	415	B
400	315	560	450	400	11	16	738 903 954	12.590	150	133	415	B
400	355	560	500	400	11	16	738 903 955	12.980	150	148	420	B
450	280	630	400	450	11	16	738 903 962	17.900	165	126	405	B
450	315	630	450	450	11	16	738 903 963	18.500	165	133	390	B
450	355	630	500	450	11	16	738 903 964	19.300	165	148	393	B
450	400	630	560	450	11	16	738 903 965	20.336	165	150	395	B



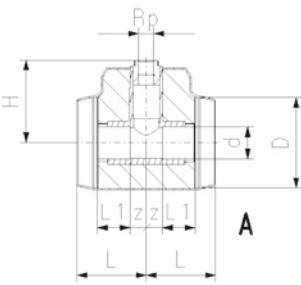
COOL-FIT 4.0 Installation fitting type 313 Rp d32-d225

Model:

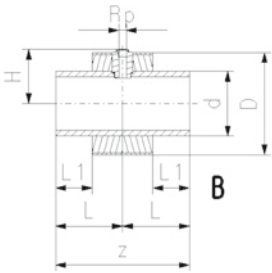
- Pre-insulated, PE100, SDR11, metric
- Insulation made from GF HE foam
- Impact resistant. Color: black
- With threaded branch for sensors (i.e temperature, pressure)
- A: Electrofusion Fitting with integrated sealing lip, for a water and vapour tight sealing
- B: Spigot Fitting with free end



B



A



B

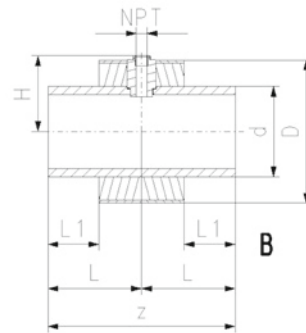
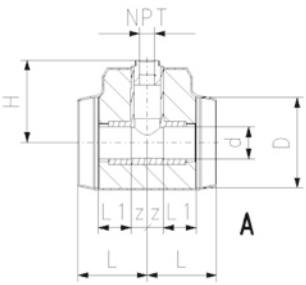
d (mm)	D (mm)	Thread Size (inch)	DN (mm)	SDR	PN (bar)	Code	Weight (kg)	H (mm)	L (mm)	L1 (mm)	z (mm)	Type
32	90	Rp ½	25	11	16	738 313 608	0.169	95	79	36	18	A
40	110	Rp ½	32	11	16	738 313 609	0.267	105	87	40	22	A
40	110	Rp ¾	32	11	16	738 313 659	0.269	108	87	40	22	A
50	110	Rp ½	40	11	16	738 313 610	0.354	107	94	44	25	A
50	110	Rp ¾	40	11	16	738 313 660	0.356	110	94	44	25	A
63	125	Rp ½	50	11	16	738 313 611	0.537	120	103	48	30	A
63	125	Rp ¾	50	11	16	738 313 661	0.539	123	103	48	30	A
75	140	Rp ½	65	11	16	738 313 612	0.773	127	116	55	36	A
75	140	Rp ¾	65	11	16	738 313 662	0.774	130	116	55	36	A
90	160	Rp ½	80	11	16	738 313 613	1.164	139	130	62	43	A
90	160	Rp ¾	80	11	16	738 313 663	1.165	142	130	62	43	A
110	180	Rp ½	100	11	16	738 313 614	1.944	151	154	72	57	A
110	180	Rp ¾	100	11	16	738 313 664	1.944	154	154	72	57	A
140	225	Rp ½	125	11	16	738 313 616	3.974	187	175	84	66	A
140	225	Rp ¾	125	11	16	738 313 666	3.964	190	175	84	66	A
160	250	Rp ½	150	11	16	738 313 617	2.496	134	165	90	330	B
160	250	Rp ¾	150	11	16	738 313 667	2.489	134	165	90	330	B
225	315	Rp ½	200	11	16	738 313 620	5.155	166	185	110	370	B
225	315	Rp ¾	200	11	16	738 313 670	5.146	169	185	110	370	B



**COOL-FIT 4.0 Installation fitting type 313 NPT
d32-d225**

Model:

- Pre-insulated PE100 SDR11 ANSI
- Insulation made from GF HE foam
- Impact resistant. Color: black
- With threaded branch for sensors (i.e temperature, pressure)
- A: Electrofusion Fitting with integrated sealing lip, for a water and vapour tight sealing
- B: Spigot Fitting with free end



d (mm)	D (mm)	Thread (inch)	Size (mm)	DN	SDR	PN (bar)	Code	Weight (kg)	L (mm)	L1 (mm)	H (mm)	z (mm)	Type
32	90	NPT	½	25	11	16	738 313 508	0.169	79	36	95	18	A
40	110	NPT	½	32	11	16	738 313 509	0.267	87	40	105	22	A
40	110	NPT	¾	32	11	16	738 313 559	0.269	87	40	108	22	A
50	110	NPT	½	40	11	16	738 313 510	0.354	94	44	107	25	A
50	110	NPT	¾	40	11	16	738 313 560	0.356	94	44	110	25	A
63	125	NPT	½	50	11	16	738 313 511	0.537	103	48	120	30	A
63	125	NPT	¾	50	11	16	738 313 561	0.539	103	48	123	30	A
75	140	NPT	½	65	11	16	738 313 512	0.773	116	55	127	36	A
75	140	NPT	¾	65	11	16	738 313 562	0.774	116	55	130	36	A
90	160	NPT	½	80	11	16	738 313 513	1.164	130	62	139	43	A
90	160	NPT	¾	80	11	16	738 313 563	1.165	130	62	142	43	A
110	180	NPT	½	100	11	16	738 313 514	1.944	154	72	151	57	A
110	180	NPT	¾	100	11	16	738 313 564	1.944	154	72	154	57	A
140	225	NPT	½	125	11	16	738 313 516	3.974	175	84	187	66	A
140	225	NPT	¾	125	11	16	738 313 566	3.964	175	84	190	66	A
160	250	NPT	½	150	11	16	738 313 517	2.496	165	90	134	330	B
160	250	NPT	¾	150	11	16	738 313 567	2.489	165	90	134	330	B
225	315	NPT	½	200	11	16	738 313 520	5.155	185	110	166	370	B
225	315	NPT	¾	200	11	16	738 313 570	5.146	185	110	169	370	B

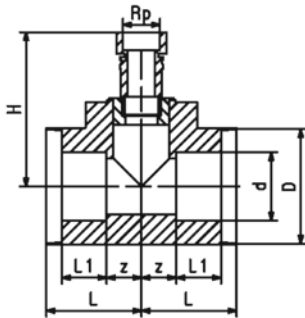
COOL-FIT 4.0 Transition Fittings



COOL-FIT 4.0 Transition Tee90° PE/brass With female thread Rp

Model:

- Pre-insulated PE100 SDR11, metric
- Brass CuZn40Pb2 with female thread Rp
- Insulation made from GF HE foam
- Impact resistant. Color: black
- Electrofusion Fitting with integrated sealing lip, for a water and vapour tight sealing



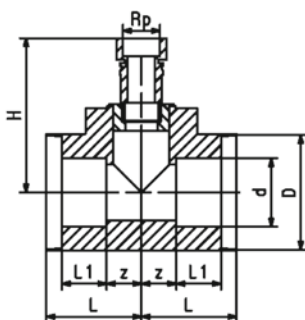
d (mm)	D (mm)	Thread	Size (inch)	DN (mm)	SDR	PN (bar)	Code	Weight (kg)	H (mm)	L (mm)	L1 (mm)	z (mm)
63	125	Rp	2	50	11	16	738 953 061	1.700	222	103	48	30
75	140	Rp	2	65	11	16	738 953 062	1.900	226	116	55	36
90	160	Rp	2	80	11	16	738 953 063	2.300	241	130	62	43
110	180	Rp	2	100	11	16	738 953 064	3.100	251	154	72	57
160	250	Rp	2	150	11	16	738 953 067	5.450	289	165	90	77
225	315	Rp	2	200	11	16	738 953 070	18.100	446	185	110	220
40	110	Rp	1	32	11	16	738 953 159	0.500	173	87	40	22
50	110	Rp	1	40	11	16	738 953 160	0.588	173	94	44	25
63	125	Rp	1	50	11	16	738 953 161	0.760	186	103	48	30
75	140	Rp	1	65	11	16	738 953 162	1.246	193	116	55	36
90	160	Rp	1	80	11	16	738 953 163	1.650	205	130	62	43
110	180	Rp	1	100	11	16	738 953 164	2.750	215	154	72	57
160	250	Rp	1	150	11	16	738 953 167	4.450	253	165	90	77
225	315	Rp	1	200	11	16	738 953 170	17.100	444	185	110	220



COOL-FIT 4.0 Transition Tee90° PE/stainless steel With female thread Rp

Model:

- Pre-insulated PE100 SDR11, metric
- Stainless steel 1.4404 / 316L with female thread Rp
- Insulation made from GF HE foam
- Impact resistant. Color: black
- Electrofusion Fitting with integrated sealing lip, for a water and vapour tight sealing



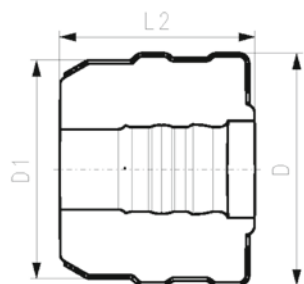
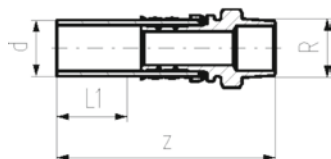
d (mm)	D (mm)	Thread	Size (inch)	DN (mm)	SDR	PN (bar)	Code	Weight (kg)	H (mm)	L (mm)	L1 (mm)	z (mm)
63	125	Rp	2	50	11	16	738 943 061	1.700	222	103	48	30
75	140	Rp	2	65	11	16	738 943 062	2.150	226	116	55	36
90	160	Rp	2	80	11	16	738 943 063	2.530	241	130	62	43
110	180	Rp	2	100	11	16	738 943 064	3.650	251	154	72	57
160	250	Rp	2	150	11	16	738 943 067	5.380	289	165	90	77
225	315	Rp	2	200	11	16	738 943 070	18.100	446	185	110	220
40	110	Rp	1	32	11	16	738 943 159	0.490	173	87	40	22
50	110	Rp	1	40	11	16	738 943 160	0.575	173	94	44	25
63	125	Rp	1	50	11	16	738 943 161	0.747	186	103	48	30
75	140	Rp	1	65	11	16	738 943 162	1.233	193	116	55	36
90	160	Rp	1	80	11	16	738 943 163	1.633	205	130	62	43
110	180	Rp	1	100	11	16	738 943 164	2.733	215	154	72	57
160	250	Rp	1	150	11	16	738 943 167	4.483	253	165	90	77
225	315	Rp	1	200	11	16	738 943 170	17.100	444	185	110	220



COOL-FIT 4.0 Adaptor fitting PE/stainless steel With male thread R

Model:

- Spigot fitting PE100 SDR11, metric with free end
- Stainless steel 1.4404 / 316L with male thread R
- Gasket: O-ring EPDM
- Including Insulation half shells



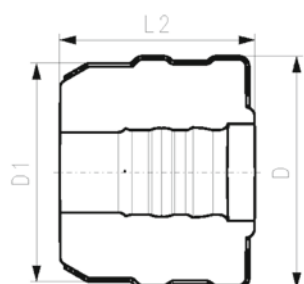
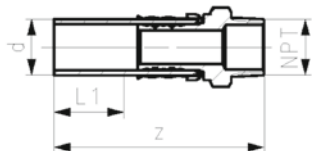
d (mm)	D (mm)	Thread	Size (inch)	DN (mm)	SDR	PN (bar)	Code	Weight (kg)	D1 (mm)	L1 (mm)	L2 (mm)	z (mm)
32	103	R	½	25	11	16	738 943 508	0.224	90	36	80	130
32	103	R	¾	25	11	16	738 943 518	0.232	90	36	80	134
32	103	R	1	25	11	16	738 943 528	0.241	90	36	80	134
40	128	R	1 ¼	32	11	16	738 943 509	0.655	110	40	91	156
50	138	R	1 ½	40	11	16	738 943 510	1.020	110	44	96	168
63	149	R	2	50	11	16	738 943 511	1.458	125	48	103	179



COOL-FIT 4.0 Adaptor fitting PE/stainless steel with male thread NPT

Model:

- Spigot fitting PE100 SDR11, ANSI with free end
- Stainless steel 1.4404 / 316L with male thread NPT
- Gasket: O-ring EPDM
- Including insulation half shells



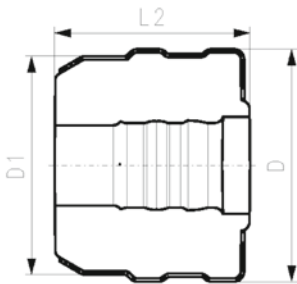
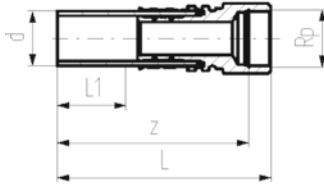
d (mm)	D (mm)	Thread	Size (inch)	DN (mm)	SDR	PN (bar)	Code	Weight (kg)	D1 (mm)	L1 (mm)	L2 (mm)	z (mm)
32	103	NPT	½	25	11	16	738 943 808	0.224	90	36	80	129
32	103	NPT	¾	25	11	16	738 943 818	0.232	90	36	80	133
32	103	NPT	1	25	11	16	738 943 828	0.241	90	36	80	134
40	128	NPT	1 ¼	32	11	16	738 943 809	0.655	110	40	91	151
50	138	NPT	1 ½	40	11	16	738 943 810	1.021	110	44	96	163
63	149	NPT	2	50	11	16	738 943 811	1.459	125	48	103	174



COOL-FIT 4.0 Adaptor fitting PE/stainless steel With female thread Rp

Model:

- Spigot fitting PE100 SDR11, metric with free end
- Stainless steel 1.4404 / 316L with female thread Rp
- Gasket: O-ring EPDM
- Including Insulation half shells



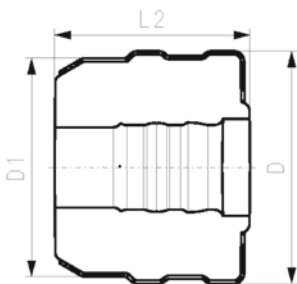
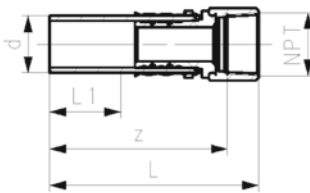
d (mm)	D (mm)	Thread	Size (inch)	DN (mm)	SDR	PN (bar)	Code	Weight (kg)	D1 (mm)	L (mm)	L1 (mm)	L2 (mm)	z (mm)
32	104	Rp	½	25	11	16	738 943 008	0.247	90	132	36	101	118
32	104	Rp	¾	25	11	16	738 943 018	0.272	90	132	36	101	116
32	104	Rp	1	25	11	16	738 943 028	0.297	90	132	36	101	115
40	128	Rp	1 ¼	32	11	16	738 943 009	0.683	110	157	40	91	141
50	138	Rp	1 ½	40	11	16	738 943 010	0.734	110	157	44	96	128
63	149	Rp	2	50	11	16	738 943 011	1.244	125	164	48	103	140



COOL-FIT 4.0 Adaptor fitting PE/stainless steel With female thread NPT

Model:

- Spigot fitting PE100 SDR11, ANSI with free end
- Stainless steel 1.4404 / 316L with female thread NPT
- Gasket: O-ring EPDM
- Including Insulation half shells



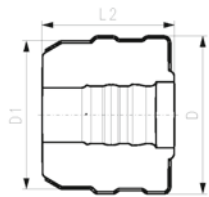
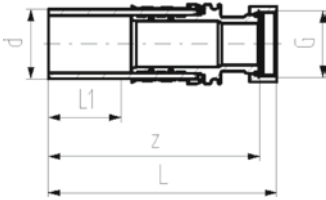
d (mm)	D (mm)	Thread	Size (inch)	DN (mm)	SDR	PN (bar)	Code	Weight (kg)	D1 (mm)	L (mm)	L1 (mm)	L2 (mm)	z (mm)
32	104	NPT	½	25	11	16	738 943 408	0.247	90	132	36	101	114
32	104	NPT	¾	25	11	16	738 943 418	0.272	90	132	36	101	114
32	104	NPT	1	25	11	16	738 943 428	0.297	90	132	36	101	114
40	128	NPT	1 ¼	32	11	16	738 943 409	0.683	110	147	40	91	125
50	138	NPT	1 ½	40	11	16	738 943 410	0.735	110	147	44	96	124
63	149	NPT	2	50	11	16	738 943 411	1.245	125	159	48	103	136



COOL-FIT 4.0 Adaptor fitting PE/stainless steel With loose union nut G

Model:

- Spigot fitting PE100 SDR11, metric with free end
- Stainless steel 1.4404 / 316L with loose union nut G
- Including flat seal EPDM
- Including insulation half shells

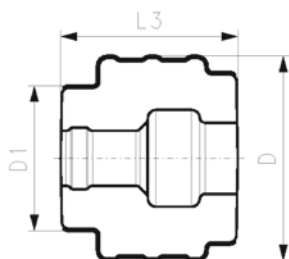
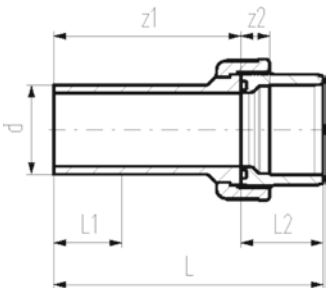


d (mm)	D (mm)	Thread	Size (inch)	DN (mm)	SDR	PN (bar)	Code	Weight (kg)	D1 (mm)	L (mm)	L1 (mm)	L2 (mm)	z (mm)
32	104	G	½	25	11	16	738 943 308	0.250	90	133	36	101	126
32	104	G	¾	25	11	16	738 943 318	0.264	90	135	36	101	129
32	104	G	1	25	11	16	738 943 328	0.296	90	135	36	101	129
40	128	G	1 ¼	32	11	16	738 943 309	0.595	110	155	40	91	148
40	128	G	1 ½	32	11	16	738 943 319	0.655	110	157	40	91	148
50	138	G	1 ½	40	11	16	738 943 310	0.820	110	164	44	96	154
63	149	G	2	50	11	16	738 943 311	1.307	125	186	48	103	170

COOL-FIT 4.0 Adaptor union PE/ABS

Model:

- Union bush: ABS Solvent cement socket
- Union End: Spigot fitting PE100 SDR11, metric with free end
- Gasket: O-ring EPDM Nr. 748 410 008-014
- Union Nut: ABS
- Including insulation half shells



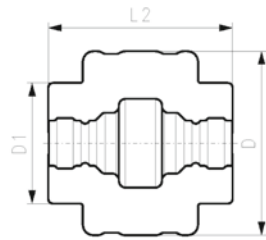
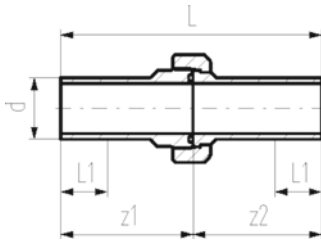
d (mm)	D (mm)	DN (mm)	SDR	PN (bar)	Code	Weight (kg)	D1 (mm)	L (mm)	L1 (mm)	L2 (mm)	L3 (mm)	z1 (mm)	z2 (mm)
32	134	25	11	10	738 513 708	0.169	90	137	36	33	109	104	11
40	143	32	11	10	738 513 709	0.256	110	156	40	39	126	117	13
50	154	40	11	10	738 513 710	0.334	110	169	44	46	135	123	15
63	172	50	11	10	738 513 711	0.522	125	190	48	58	152	132	21
75	210	65	11	10	738 513 712	0.996	140	211	55	62	170	149	18
90	233	80	11	10	738 513 713	1.336	160	215	62	69	167	146	18
110	263	100	11	10	738 513 714	1.900	180	235	72	72	177	163	11



COOL-FIT 4.0 Union PE/PE

Model:

- Union bush: Spigot fitting PE100 SDR11, metric with free end
- Union End: Spigot fitting PE100 SDR11, metric with free end
- Gasket: O-ring EPDM Nr. 748 410 008-014
- Union Nut: PEGF25
- Including insulation half shells

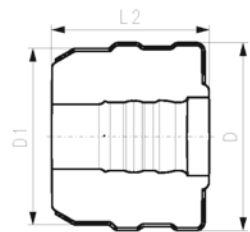
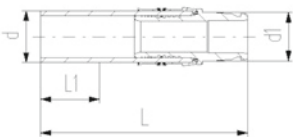


d (mm)	D (mm)	DN (mm)	SDR	PN (bar)	Code	Weight (kg)	D1 (mm)	L (mm)	L1 (mm)	L2 (mm)	z1 (mm)	z2 (mm)
32	139	25	11	16	738 513 608	0.223	90	211	36	139	107	104
40	153	32	11	16	738 513 609	0.363	110	234	40	158	118	116
50	165	40	11	16	738 513 610	0.468	110	247	44	163	124	123
63	185	50	11	16	738 513 611	0.584	125	268	48	176	136	132

COOL-FIT 4.0 Adaptor fitting PE/iFIT

Model:

- Spigot fitting PE100 SDR11, metric with free end
- iFIT module stainless steel 1.4404 / 316L
- Including insulation half shells



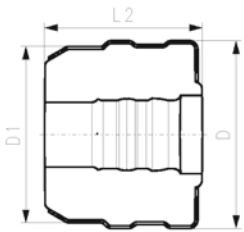
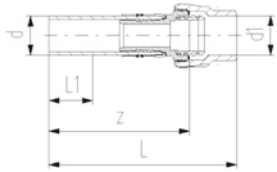
d (mm)	D (mm)	DN (mm)	SDR	PN (bar)	Code	Weight (kg)	d1 (mm)	D1 (mm)	L (mm)	L1 (mm)	L2 (mm)
32	103	25	11	10	738 943 108	0.256	25-32	90	132	36	80



COOL-FIT 4.0 Adaptor fitting PE/Sanipex MT

Model:

- Spigot fitting PE100 SDR11, metric with free end
- Sanipex MT adaptor brass CuZn40Pb2
- Including insulation half shells



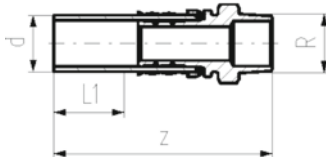
d	D	DN	SDR	PN	Code	Weight	d1	D1	L	L1	L2	z
(mm)	(mm)	(mm)		(bar)		(kg)	(mm)	(mm)	(mm)	(mm)	(mm)	(mm)
32	103	25	11	10	738 953 118	0.476	32	90	174	36	101	135



COOL-FIT 2.0/4.0 Adaptor fitting PE/stainless steel With male thread R

Model:

- Spigot fitting PE100 SDR11, metric with free end
- Stainless steel 1.4404 / 316L with male thread R
- Gasket: O-ring EPDM



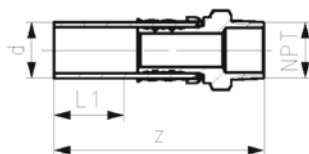
d	Thread	Size	DN	SDR	PN	Code	Weight	L1	z
(mm)		(inch)	(mm)		(bar)		(kg)	(mm)	(mm)
32	R	½	25	11	16	738 940 508	0.179	36	130
32	R	¾	25	11	16	738 940 518	0.187	36	134
32	R	1	25	11	16	738 940 528	0.196	36	134
40	R	1 ¼	32	11	16	738 940 509	0.572	40	156
50	R	1 ½	40	11	16	738 940 510	0.927	44	168
63	R	2	50	11	16	738 940 511	1.347	48	179



COOL-FIT 2.0/4.0 Adaptor fitting PE/stainless steel With male thread NPT

Model:

- Spigot fitting PE100 SDR11, ANSI with free end
- Stainless steel 1.4404 / 316L with male thread NPT
- Gasket: O-ring EPDM



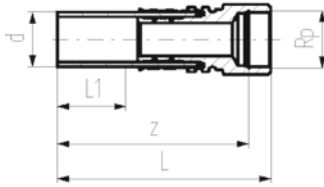
d	Thread	Size	DN	SDR	PN	Code	Weight	L	L1	z
(mm)		(inch)	(mm)		(bar)		(kg)	(mm)	(mm)	(mm)
32	NPT	½	25	11	16	738 940 808	0.179	132	36	118
32	NPT	¾	25	11	16	738 940 818	0.187	132	36	116
32	NPT	1	25	11	16	738 940 828	0.196	132	36	115
40	NPT	1 ¼	32	11	16	738 940 809	0.572	157	40	141
50	NPT	1 ½	40	11	16	738 940 810	0.927	150	44	128
63	NPT	2	50	11	16	738 940 811	1.347	164	48	140

**COOL-FIT 2.0/4.0 Adaptor fitting PE/stainless steel
With female thread Rp**



Model:

- Spigot fitting PE100 SDR11, metric with free end
- Stainless steel 1.4404 / 316L with female thread Rp
- Gasket: O-ring EPDM



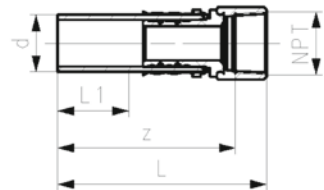
d (mm)	Thread	Size (inch)	DN (mm)	SDR	PN (bar)	Code	Weight (kg)	L (mm)	L1 (mm)	z (mm)
32	Rp	½	25	11	16	738 940 008	0.183	132	36	118
32	Rp	¾	25	11	16	738 940 018	0.208	132	36	116
32	Rp	1	25	11	16	738 940 028	0.233	132	36	115
40	Rp	1 ¼	32	11	16	738 940 009	0.600	157	40	141
50	Rp	1 ½	40	11	16	738 940 010	0.641	150	44	128
63	Rp	2	50	11	16	738 940 011	1.133	164	48	140

**COOL-FIT 2.0/4.0 Adaptor fitting PE/stainless steel
With female thread NPT**



Model:

- Spigot fitting PE100 SDR11, ANSI with free end
- Stainless steel 1.4404 / 316L with female thread NPT
- Gasket: O-ring EPDM



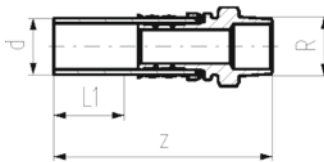
d (mm)	Thread	Size (inch)	DN (mm)	SDR	PN (bar)	Code	Weight (kg)	L (mm)	L1 (mm)	z (mm)
32	NPT	½	25	11	16	738 940 408	0.183	132	36	114
32	NPT	¾	25	11	16	738 940 418	0.208	132	36	114
32	NPT	1	25	11	16	738 940 428	0.233	132	36	114
40	NPT	1 ¼	32	11	16	738 940 409	0.600	147	40	125
50	NPT	1 ½	40	11	16	738 940 410	0.641	147	44	124
63	NPT	2	50	11	16	738 940 411	1.133	159	48	136

**COOL-FIT 2.0/4.0 Adaptor fitting PE/brass
With male thread R**



Model:

- Spigot fitting PE100 SDR11, metric with free end
- Brass CuZn40Pb2 with male thread R
- Gasket: O-ring EPDM



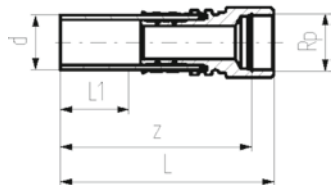
d (mm)	Thread	Size (inch)	DN (mm)	SDR	PN (bar)	Code	Weight (kg)	L1 (mm)	z (mm)
32	R	½	25	11	16	738 950 508	0.188	36	130
32	R	¾	25	11	16	738 950 518	0.196	36	134
32	R	1	25	11	16	738 950 528	0.206	36	134
40	R	1 ¼	32	11	16	738 950 519	0.608	40	156
50	R	1 ½	40	11	16	738 950 510	0.986	44	168
63	R	2	50	11	16	738 950 511	1.433	48	179

COOL-FIT 2.0/4.0 Adaptor fitting PE/brass
With female thread Rp



Model:

- Spigot fitting PE100 SDR11, metric with free end
- Brass CuZn40Pb2 with female tread Rp
- Gasket: O-ring EPDM



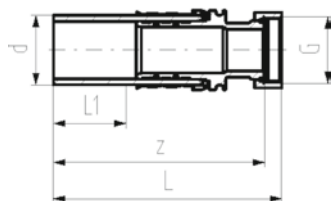
d (mm)	Thread	Size (inch)	DN (mm)	SDR	PN (bar)	Code	Weight (kg)	L (mm)	L1 (mm)	z (mm)
32	Rp	½	25	11	16	738 950 008	0.192	132	36	118
32	Rp	¾	25	11	16	738 950 018	0.219	132	36	116
32	Rp	1	25	11	16	738 950 028	0.246	132	36	115
40	Rp	1 ¼	32	11	16	738 950 019	0.641	157	40	141
50	Rp	1 ½	40	11	16	738 950 010	0.684	150	44	128
63	Rp	2	50	11	16	738 950 011	1.209	164	48	140

COOL-FIT 2.0/4.0 Adaptor fitting PE/brass
With loose union nut G



Model:

- Spigot fitting PE100 SDR11, metric with free end
- Brass CuZn40Pb2 with loose union nut G
- Including flat seal EPDM



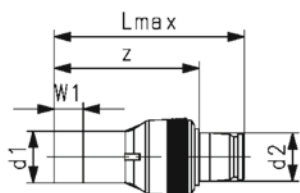
d (mm)	Thread	Size (inch)	DN (mm)	SDR	PN (bar)	Code	Weight (kg)	L (mm)	L1 (mm)	z (mm)
32	G	¾	25	11	16	738 950 318	0.206	135	36	129
32	G	1	25	11	16	738 950 328	0.244	135	36	129
40	G	1 ¼	32	11	16	738 950 309	0.543	155	40	148
40	G	1 ½	32	11	16	738 950 319	0.607	157	40	148
50	G	1 ½	40	11	16	738 950 310	0.769	164	44	154
63	G	2	50	11	16	738 950 311	1.268	186	48	170

COOL-FIT 2.0/4.0 Adaptor fitting PE/iFIT



Model:

- Spigot fitting PE100 SDR11, metric with free end
- Push system module brass



d1 (mm)	d2 (mm)	DN (mm)	SDR	PN (bar)	Code	SP	Weight (kg)	Lmax (mm)	W1 (mm)	z (mm)
32	25/32	25	11	16	738 950 058	1	0.219	115	36	87

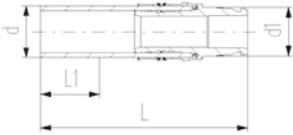
COOL-FIT 2.0/4.0 Adaptor Fitting PE/iFIT



Model:

- Spigot fitting PE100 SDR11, metric with free end
- iFIT module stainless steel 1.4404 / 316L

d (mm)	DN (mm)	SDR	PN (bar)	Code	Weight (kg)	L (mm)	L1 (mm)	L2 (mm)
32	25	11	10	738 940 108	0.211	132	36	80



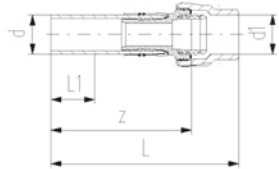
COOL-FIT 2.0/4.0 Adaptor fitting PE/Sanipex MT



Model:

- Spigot fitting PE100 SDR11, metric with free end
- Sanipex MT adaptor brass CuZn40Pb2

d (mm)	DN (mm)	SDR	PN (bar)	Code	Weight (kg)	d1 (mm)	L (mm)	L1 (mm)	L2 (mm)	z (mm)
32	25	11	10	738 950 118	0.412	32	174	36	101	135



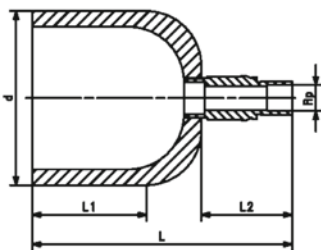
COOL-FIT 2.0/4.0 Transition cap PE/brass With female thread Rp

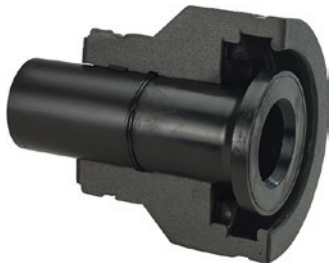


Model:

- Spigot fitting PE100 SDR11, metric with free end
- Brass CuZn40Pb2 with female tread Rp
- Gasket: O-ring EPDM

d (mm)	Thread	Size (inch)	DN (mm)	SDR	PN (bar)	Code	Weight (kg)	L (mm)	L1 (mm)	L2 (mm)
32	Rp	½	25	11	16	738 960 008	0.200	107	36	69
40	Rp	½	32	11	16	738 960 009	0.210	113	40	73
50	Rp	½	40	11	16	738 960 010	0.250	117	44	73
63	Rp	½	50	11	16	738 960 011	0.300	121	48	73
75	Rp	½	65	11	16	738 960 012	0.400	128	55	73
90	Rp	½	80	11	16	738 960 013	0.476	135	62	73
110	Rp	½	100	11	16	738 960 014	0.695	145	72	73
140	Rp	½	125	11	16	738 960 016	0.954	209	84	73
160	Rp	½	150	11	16	738 960 017	1.300	193	90	73
225	Rp	½	200	11	16	738 960 020	2.532	221	110	73





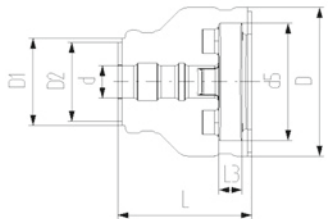
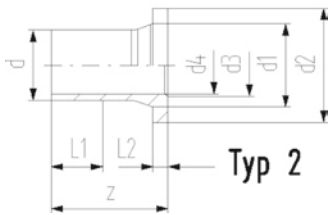
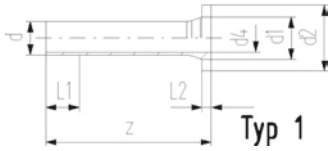
COOL-FIT 2.0/4.0 Flange adaptor metric

Model:

- PE100 SDR11, metric
- Suitable for flange connections to metric and/or ANSI/ASME B16.5
- Type 1 without chamfer, Type 2 with chamfer
- Profile flange gasket EPDM: metric No. 48 44 07, ANSI No. 48 44 05.
- Separate Fittings type A needed for joining

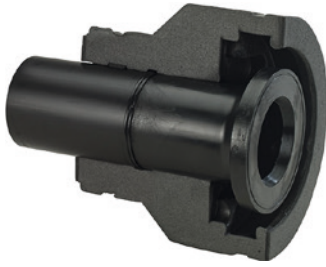
Note:

Backing ring and gasket not included



d (mm)	DN (mm)	SDR	PN	Type	Code	Weight (kg)
32	25	11	16	1	738 710 008	0.320
40	32	11	16	1	738 710 009	0.480
50	40	11	16	1	738 710 010	0.620
63	50	11	16	1	738 710 011	0.910
75	65	11	16	2	738 710 012	1.220
90	80	11	16	2	738 710 013	1.650
110	100	11	16	2	738 710 014	2.390
140	125	11	16	2	738 710 016	3.660
160	150	11	16	2	738 710 017	4.800
225	200	11	16	2	738 710 020	9.600

d (mm)	D (mm)	d1 (mm)	D1 (mm)	d2 (mm)	D2 (mm)	d3 (mm)	d4 (mm)	d5 (mm)	L (mm)	L1 (mm)	L2 (mm)	L3 (mm)	Standard	z (mm)
32	135	40	90	68			26	121	162	36	10	26	Metric	190
40	170	50	110	78	90		32	146	165	40	11	28	Metric	197
50	180	61	110	88	90		40	156	178	44	12	30	Metric	214
63	200	75	125	102	110		51	171	230	48	14	32	Metric, ANSI	270
75	220	89	140	122	125	66	61	191	232	55	16	34	Metric, ANSI	279
90	240	105	160	138	140	78	73	206	245	62	17	35	Metric	299
110	270	125	180	158	160	100	90	235	254	72	18	36	Metric, ANSI	320
140	300	155	225	188	200	127	127	256	299	84	25	38	Metric, ANSI	383
160	358	174	259	213	213	151	131	295	332	90	25	34	Metric, ANSI	412
225	423	233	325	268	268	209	184	354	383	110	32	37	Metric, ANSI	483



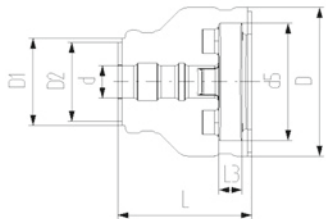
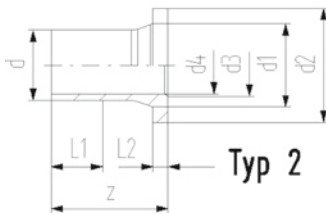
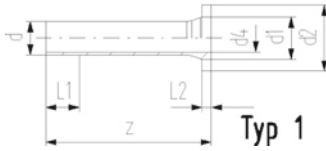
COOL-FIT 2.0/4.0 Flange adaptor ANSI

Model:

- PE100 SDR11, metric
- Suitable for flange connections to metric and/or ANSI/ASME B16.5
- Type 1 without chamfer, Type 2 with chamfer
- Profile flange gasket EPDM: metric No. 48 44 07, ANSI No. 48 44 05.
- Separate Fittings type A needed for joining

Note:

Backing ring and gasket not included



d (mm)	DN (mm)	SDR	PN	Type	Code	Weight (kg)
32	25	11	16	1	738 710 108	0.320
40	32	11	16	1	738 710 109	0.480
63	50	11	16	1	738 710 011	0.910
50	40	11	16	1	738 710 110	0.620
75	65	11	16	2	738 710 012	1.220
90	80	11	16	2	738 710 113	1.650
110	100	11	16	2	738 710 014	2.390
140	125	11	16	2	738 710 016	3.660
160	150	11	16	2	738 710 017	4.800
225	200	11	16	2	738 710 020	9.600

d (mm)	D (mm)	d1 (mm)	D1 (mm)	d2 (mm)	D2 (mm)	d3 (mm)	d4 (mm)	d5 (mm)	L (mm)	L1 (mm)	L2 (mm)	L3 (mm)	Standard	z (mm)
32	135	40	90	63	63		26	121	162	36	10	26	ANSI	190
40	170	50	110	73	73		32	146	165	40	11	28	ANSI	197
63	200	75	125	102	110		51	171	230	48	14	32	Metric, ANSI	270
50	180	61	110	82	82		40	156	178	44	12	30	ANSI	214
75	220	89	140	122	125	66	61	191	232	55	16	34	Metric, ANSI	279
90	240	105	160	133	133	78	73	206	245	62	17	35	ANSI	299
110	270	125	180	158	160	100	90	235	254	72	18	36	Metric, ANSI	320
140	300	155	225	188	200	127	127	256	299	84	25	38	Metric, ANSI	383
160	358	174	259	213	213	151	131	295	332	90	25	34	Metric, ANSI	412
225	423	233	325	268	268	209	184	354	383	110	32	37	Metric, ANSI	483

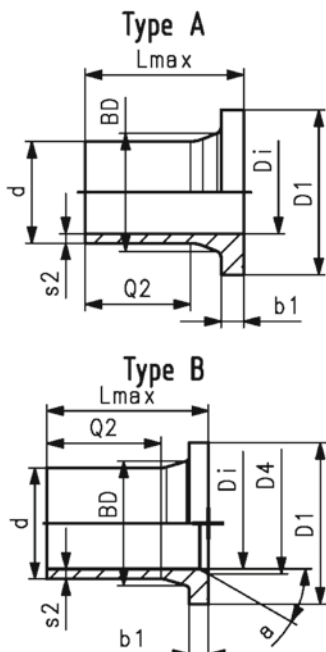
ELGEF Plus Flange adaptor PE100
d50-1000mm / SDR17 / Long version / Combined jointing face: flat and serrated



Model:

- For IR, butt and electrofusion welding according to DVS 2207
- Type A: without chamfer
- Type B: with chamfer
- Type 567/578 suitable for plastic butterfly valves up to DN300
- Type 565 for DN 300, the ecoFIT special flange adapter ** SDR17 is required
- Type 038/039/044/065 for metal butterfly valves up to DN250 suitable
- Type 038/039/044/065 for metal butterfly valves DN 300; the ecoFIT special flange adapter ** SDR17 is required
- For Butterfly Valves above DN 450, the ecoFIT adapters for BV SDR17 are required
- For third-party products, please check the Insertion depth of the disc dimension
- Profile seal d50-d1000: NBR, EPDM, FKM
- Flat gasket d50-d315: EPDM, FKM
- Pressure rating: 10 bar water / 5 bar gas
- Please refer to the Online Tool: Perfect Flange Connection - GF Piping Systems (gfps.com)

* Machined



d	Di	Type	DN	Code	Weight	Lmax	D1	D4	Q2	s2	b1	BD
(mm)	(mm)		(mm)		(kg)	(mm)	(mm)	(mm)	(mm)	(mm)	(mm)	(mm)
50	44	A	40	753 800 085	0.107	90	88		62	3.0	12	61
63	55	A	50	753 800 086	0.168	106	102		70	3.8	14	75
75	66	A	65	753 800 087	0.260	130	122		75	4.5	16	89
90	79	A	80	753 800 088	0.367	140	138		103	5.4	17	105
110	96	A	100	753 800 089	0.571	160	158		117	6.6	18	125
140	123	B	125	753 800 091	1.035	200	188	127	147	8.3	25	155
160	141	B	150	753 800 092	1.342	200	212	151	147	9.5	25	175
225	198	B	200	753 800 095	2.456	200	268	210	138	13.4	32	235
250	220	B	250	753 800 096	3.500	220	320	245	148	14.8	35	285
280	246	B	250	753 800 097	3.780	230	320	265	154	16.6	35	291
315	277	B	300	753 800 098	5.470	242	370	300	166	18.7	36	335
355	310	B	350	753 800 299	7.100	260	430	346	170	21.1	33	373
400	350	B	400	753 800 300	9.600	282	482	395	185	23.7	36	427
450	400	A	500	753 800 301	16.400	316	585		205	26.7	46	514

Flanges PP-Steel metric

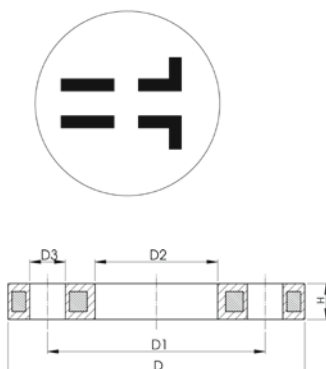
Model:

- Material: PP (30% glass-fibre reinforced) with steel ring
- Metric: ISO 7005, EN 1092, ISO 9624
- ASME: ANSI/ASME B 16.5 class 150, ASTM D4024, BS 1560, BS EN 1759
- Special flange adapter ANSI for d25 - d50 and d90 required

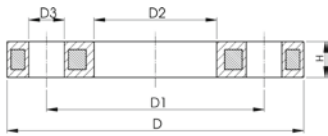
AL: number of holes

* FM 1613 approved - 15 bar

** Profiled loose flange

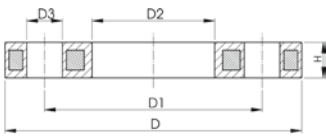


d	DN	D	PN	Standard	Bolt / circle	Design	Code	Weight
(mm)	(mm)	(mm)	(bar)					(kg)
32	25	115	16	Metric	PN10	Butt/Socket	727 700 208	0.429
40	32	140	16	Metric	PN10	Butt/Socket	727 700 209	0.621
50	40	150	16	Metric	PN10	Butt/Socket	727 700 210	0.722
63	50	165	16	Metric	PN10	Butt/Socket	727 700 211	0.900
75	65	185	16	Metric	PN10	Butt/Socket	727 700 212	1.110
*	90	80	200	Metric	PN10	Butt	724 700 313	1.390
	90	80	200	Metric	PN10	Butt	727 700 313	1.390
*	110	100	223	Metric	PN10	Butt	724 700 314	1.407
	110	100	220	Metric	PN10	Butt	727 700 314	1.407
*	140	125	250	Metric	PN10	Butt	724 700 316	2.318
	140	125	250	Metric	PN10	Butt	727 700 716	2.318
*	160	150	285	Metric	PN10	Butt	724 700 317	3.491
	160	150	285	Metric/ASME	PN10/ class 150	Butt	727 700 717	3.491
*, **	225	200	344	Metric	PN16	Butt	724 700 320	3.380



	d (mm)	DN (mm)	D (mm)	PN (bar)	Standard	Bolt / circle	Design	Code	Weight (kg)
	225	200	340	16	Metric/ASME	PN10/ class 150	Butt	727 700 720	5.533
*, **	250	250	410	16	Metric	PN16	Butt	724 700 321	6.390
	250	250	395	16	Metric	PN10	Butt	727 700 721	6.632
*, **	280	250	410	16	Metric	PN16	Butt	724 700 322	6.310
	280	250	395	16	Metric	PN10	Butt	727 700 722	6.573
*, **	315	300	455	16	Metric	PN16	Butt	724 700 323	9.740
	315	300	445	16	Metric	PN10	Butt	727 700 723	7.903
*, **	355	350	521	16	Metric	PN16	Butt	724 700 324	15.203
	355	350	515	16	Metric	PN10	Butt	727 700 724	14.587
*, **	400	400	582	16	Metric	PN16	Butt	724 700 325	20.600
	400	400	574	16	Metric	PN10	Butt	727 700 725	20.034
*, **	450	500	685	10	Metric	PN10	Butt	724 700 426	25.600

	d (mm)	D1 (mm)	D2 (mm)	D3 (mm)	H max. (mm)	AL	SC
	32	85	42	14	16	4	M12
	40	100	51	18	16	4	M16
	50	110	62	18	20	4	M16
	63	125	78	18	20	4	M16
	75	145	92	18	20	4	M16
*	90	160	108	18	20	8	M16
	90	160	108	18	20	8	M16
*	110	180	128	18	20	8	M16
	110	180	128	18	20	8	M16
*	140	210	158	18	24	8	M16
	140	210	158	18	24	8	M16
*	160	240	178	22	28	8	M20
	160	240	178	22	24	8	M20
*, **	225	295	238	22	31	12	M20
	225	297	238	22	27	8	M20
*, **	250	355	288	26	35	12	M24
	250	350	288	22	30	12	M20
*, **	280	355	294	26	36	12	M24
	280	350	294	22	30	12	M20
*, **	315	410	338	26	43	12	M24
	315	400	338	22	34	12	M20
*, **	355	470	376	26	55	16	M24
	355	460	376	23	40	16	M20
*, **	400	525	430	30	56	16	M27
	400	515	430	26	40	16	M24
*, **	450	620	517	26	56	20	M24



Flanges PP-Steel ANSI

Model:

- Material: PP (30% glass-fibre reinforced) with steel ring
- Metric: ISO 7005, EN 1092, ISO 9624
- ASME: ANSI/ASME B 16.5 class 150, ASTM D4024, BS 1560, BS EN 1759
- Special flange adapter ANSI for d25 - d50 and d90 required

AL: number of holes

* FM 1613 approved - 15 bar

** Profiled loose flange

d (mm)	DN (mm)	D (mm)	PN (bar)	Standard	Bolt / circle	Design	Code	Weight (kg)
32	25	115	16	ASME	class 150	Butt/Socket	727 701 208	0.416
40	32	140	16	ASME	class 150	Butt/Socket	727 701 209	0.730
50	40	150	16	ASME	class 150	Butt/Socket	727 701 210	0.809
63	50	165	16	ASME	class 150	Butt/Socket	727 701 211	0.866
75	65	185	16	ASME	class 150	Butt/Socket	727 701 212	1.117
90	80	200	16	ASME	class 150	Butt	727 701 313	1.499
110	100	229	16	ASME	class 150	Butt	727 701 314	1.739
160	150	285	16	Metric/ASME	PN10/ class 150	Butt	727 700 717	3.491
225	200	340	16	Metric/ASME	PN10/ class 150	Butt	727 700 720	5.533
250	250	406	10	ASME	class 150	Butt	727 701 321	6.000
315	300	483	10	ASME	class 150	Butt	727 701 322	11.800
355	350	540	10	ASME	class 150	Butt	727 701 323	17.900
400	400	597	10	ASME	class 150	Butt	727 701 324	24.500
450	500	712	10	ASME	class 150	Butt	727 701 325	33.600

d (mm)	D1 (mm)	D2 (mm)	D3 (mm)	H max. (mm)	AL	SC
32	79	42	16	16	4	M12
40	89	51	16	16	4	M16
50	98	62	16	18	4	M16
63	121	78	19	18	4	M16
75	140	92	19	18	4	M16
90	152	108	19	20	4	M16
110	190	128	19	20	8	M16
160	240	178	22	24	8	M20
225	297	238	22	27	8	M20
250	362	293	25	30	12	M24
315	432	338	25	34	12	M24
355	476	376	29	42	12	M27
400	539	429	29	44	16	M27
450	635	540	32	53	20	M30



Profiled Backing Flanges Metal, Epoxy coated

Model:

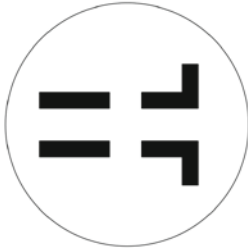
- Ductile iron (GGG 40), stoved epoxy (black, DIN30677)
- Metric: ISO 7005, EN 1092, ISO 9624

Note:

Flat side = bolt / washer side
 Profiled side = flange adaptor side (aligned with collar)

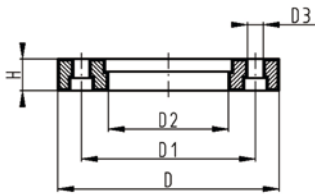
AL: number of holes

*Galvanized steel S235-JR, suitable for underground laying



	d (mm)	DN (mm)	PN (bar)	Standard	Bolt / circle	Design	Code	Weight (kg)
*	450	450	10	Metric	PN10	Butt	724 705 026	38.000
	450	500	10	Metric	PN16	Butt	724 705 326	50.500

	d (mm)	DN (mm)	D (mm)	D1 (mm)	D2 (mm)	D3 (mm)	H (mm)	AL	SC
*	450	450	615	565	470	26	36	20	M24
	450	500	715	650	517	33	46	20	M30



Blanking flange set PE100

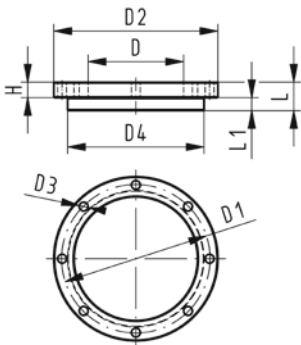
Combined jointing face flat and serrated metric

Model:

- d63 - d315: backing flange PP-V with end blank PE
- d355 - d630: backing flange PP/Steel with end blank PE
- Connecting dimensions: ISO 7005, EN 1092, DIN 2501
- **Bolt circle PN 10**

AL: number of holes

L: length of the End Blank



d (mm)	DN (mm)	PN (bar)	Code	Weight (kg)	D (mm)	D1 (mm)	D2 (mm)	D3 (mm)	D4 (mm)	L (mm)	L1 (mm)	H (mm)	AL	SC
63	50	16	753 700 611	0.560	75	125	165	18	102	30	14	24	4	M16
75	65	16	753 700 612	0.910	89	145	185	18	122	30	16	26	4	M16
90	80	16	753 700 613	0.921	105	160	200	18	138	30	17	27	8	M16
110	100	16	753 700 614	1.158	125	180	220	18	158	30	18	28	8	M16
140	125	16	753 700 616	1.913	155	210	250	18	188	40	25	30	8	M16
160	150	16	753 700 617	2.373	175	240	285	22	212	40	25	32	8	M20
225	200	16	753 700 620	3.744	235	295	340	22	268	50	32	34	8	M20
250	250	16	753 700 621	6.051	285	350	395	22	320	55	35	38	12	M20
280	250	16	753 700 622	6.305	291	350	395	22	320	60	35	38	12	M20
315	300	16	753 700 623	8.894	335	400	445	22	370	65	35	42	12	M20
355	350	16	753 700 624	23.198	373	460	515	22	430	70	40	40	16	M20
400	400	16	753 700 625	30.766	427	515	574	26	482	75	46	40	16	M24
450	500	10	753 700 626	44.271	510	620	684	26	585	80	60	49	20	M24

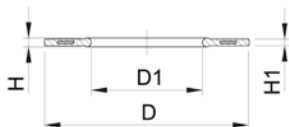


Profile Flange Gasket EPDM/FKM metric

Model:

- For all metric GF Flange Adaptors
- Hardness: 70° Shore EPDM, 75° Shore FKM
- EPDM: approved acc. to DVGW Water W 270, KTW recommendation
- Centering on the inner diameter of the screw crown
- material steel insert: carbon steel
- Rubber-steel body combined with rubber profile cord ring up to d630
- Rubber-steel body ideal for big dimensions (d710 - d1000)

di FA are the suitable inner diameters of flanges adaptors



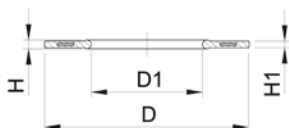
d (mm)	DN (mm)	PN (bar)	EPDM Code	D (mm)	D1 (mm)	di FA (mm)	H (mm)	H1 (mm)
32	25	16	748 440 708	71	28	18 - 28	4	3
40	32	16	748 440 709	82	40	30 - 40	4	3
50	40	16	748 440 710	92	46	36 - 46	4	3
63	50	16	748 440 711	107	58	48 - 58	5	4
75	65	16	748 440 712	127	69	59 - 69	5	4
90	80	16	748 440 713	142	84	73 - 84	5	4
110	100	16	748 440 714	162	104	94 - 104	6	5
140	125	16	748 440 716	192	137	127 - 137	6	5
160	150	16	748 440 717	218	160	150 - 160	8	6
225	200	16	748 440 720	273	220	207 - 220	8	6
250	250	16	748 440 721	328	252	238 - 252	8	6
280	250	16	748 440 722	328	274	264 - 274	8	6
315	300	16	748 440 723	378	306	296 - 306	8	6
355	350	16	748 440 724	438	355	340 - 355	10	7
400	400	16	748 440 725	489	400	385 - 400	10	7
450	500	10	748 440 726	594	403	393 - 403	10	7



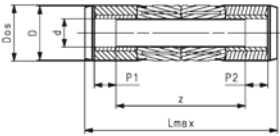
Profile Flange Gasket EPDM/FKM ANSI/ASME

Model:

- Suitable for flanges adaptors PP/PE PVDF
- Hardness: 70° Shore EPDM, 75° Shore FKM
- Centered by the flange bolts
- Dimension D is in accordance with the inner diameter of the bolt circle



d (mm)	Size (inch)	DN (mm)	PN (bar)	EPDM Code	Weight (kg)	D (mm)	D1 (mm)	H (mm)	H1 (mm)
25	¾	20	16	748 440 502	0.010	54	27	4	3
32	1	25	16	748 440 503	0.011	64	33	4	3
40	1 ¼	32	16	748 440 504	0.017	73	42	4	3
50	1 ½	40	16	748 440 505	0.030	83	48	4	3
63	2	50	16	748 440 506	0.029	102	60	5	4
75	2 ½	65	16	748 440 507	0.046	121	73	5	4
90	3	80	16	748 440 508	0.053	133	89	5	4
110	4	100	16	748 440 509	0.088	171	115	6	5
150	6	150	16	748 440 512	0.127	222	160	8	6
225	8	200	16	748 440 515	0.195	279	220	8	6
250	10	250	16	748 440 517	0.243	337	273	8	6
315	12	300	16	748 440 518	0.398	406	325	8	6
355	14	350	10	748 440 519	0.800	448	356	10	7
400	16	400	10	748 440 520	0.900	512	406	10	7
450	18	450	10	748 440 521	1.000	547	457	10	7

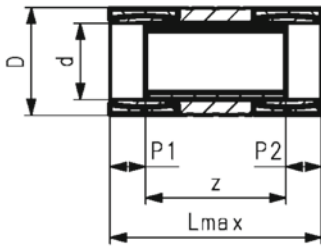


COOL-FIT 4.0 Sliding coupler kit

Model:

- Pre-insulated PE100 SDR11, metric
- Insulation made from GF HE foam
- Outer jacket impact resistant. Color: black
- Integrated sealing lip, for a moisture-proof and vapour tight sealing
- Including two couplers, pipe section and four insulation half shells

d (mm)	D (mm)	DN (mm)	SDR	PN (bar)	Code	Weight (kg)	Dos (mm)	Lmax (mm)	P1 (mm)	P2 (mm)	z (mm)
32	90	25	11	16	738 913 508	0.499	97	390	36.0	36	268
40	110	32	11	16	738 913 509	0.475	117	414	40.0	40	284
50	110	40	11	16	738 913 510	0.630	117	434	44.0	44	296
63	125	50	11	16	738 913 511	0.937	132	464	48.0	48	318
75	140	65	11	16	738 913 512	1.693	147	504	55.0	55	344
90	160	80	11	16	738 913 513	2.527	168	544	62.0	62	370
110	180	100	11	16	738 913 514	3.298	188	614	72.0	72	420
140	225	125	11	16	738 913 516	5.053	234	684	84.0	84	466
160	250	150	11	16	738 913 517	7.225	258	714	90.0	90	484
225	315	200	11	16	738 913 520	16.276	324	853	110.0	110	583



COOL-FIT 4.0 Sliding coupler kit

Model:

- Pre-insulated PE100 SDR11, metric
- Insulation made from GF HE foam
- Outer jacket impact resistant. Color: black
- Including two couplers, pipe section and insulation half shells

d (mm)	D (mm)	DN (mm)	SDR	PN (bar)	Code	Weight (kg)	Lmax (mm)	P1 (mm)	P2 (mm)	z (mm)
250	355	250	11	16	738 913 521	22.948	764	123.5	123.5	517
280	400	250	11	16	738 913 522	32.633	773	126.0	126.0	521
315	450	300	11	16	738 913 523	39.518	824	133.5	133.5	557

COOL-FIT 4.0 Weld-in Port



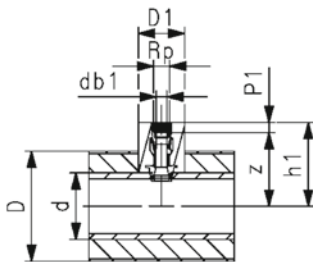
COOL-FIT 4.0 Weld-in port PE/Stainless steel With female thread Rp

Model:

- Material: PE100, Stainless steel V4A/ 316L
- With Weld-in port cone (PE100) and female thread Rp (stainless steel) for the installation of sensors, instruments, venting and draining
- Gasket: O-ring EPDM
- Including insulation made from EPDM foam

Note:

For pipes COOL-FIT 4.0 and COOL-FIT 4.0F of the dimensions d63-d225



Size (inch)	Thread	PN (bar)	Code	Weight (kg)	d (mm)	db1 (mm)	D1 (mm)	h1 (mm)	P1 (mm)	z (mm)
½	Rp	16	738 113 206	0.139	d63 - d225	11.8	78	85+d/2	15	70 + d/2
¾	Rp	16	738 113 207	0.179	d63 - d225	17.4	78	85+d/2	16	69 + d/2
1	Rp	16	738 113 208	0.240	d63 - d225	23.1	78	86+d/2	19	67 + d/2



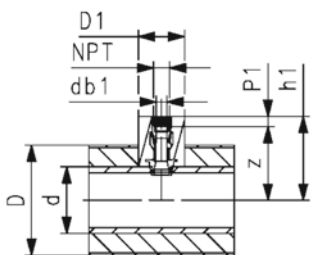
COOL-FIT 4.0 Weld-in port PE/Stainless steel With female thread NPT

Model:

- Material: PE100, Stainless steel V4A/ 316L
- With Weld-in port cone (PE100) and female thread NPT (stainless steel) for the installation of sensors, instruments, venting and draining
- Gasket: O-ring EPDM
- Including insulation made from EPDM foam

Note:

For pipes COOL-FIT 4.0 and COOL-FIT 4.0F of the dimensions d63-d225



Size (inch)	Thread	PN (bar)	Code	Weight (kg)	d (mm)	db1 (mm)	D1 (mm)	h1 (mm)	P1 (mm)	z (mm)
½	NPT	16	738 113 306	0.148	d63 - d225	11.8	78	85+d/2	15	70 + d/2
¾	NPT	16	738 113 307	0.191	d63 - d225	17.4	78	85+d/2	16	69 + d/2
1	NPT	16	738 113 308	0.248	d63 - d225	23.1	78	86+d/2	19	67 + d/2



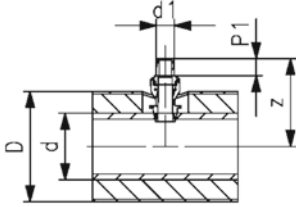
COOL-FIT 2.0/4.0 Weld-in port PE/iFIT

Model:

- Material: PE100, brass
- With Weld-in port cone (PE100) and iFIT module (brass) for the transition to COOL-FIT Push System or iFIT
- Gasket: O-ring EPDM

Note:

For pipes COOL-FIT 2.0, COOL-FIT 2.0F, COOL-FIT 4.0 and COOL-FIT 4.0F of the dimension d63-d225



d1 (mm)	PN (bar)	Code	Weight (kg)	d	P1	z
25/32	16	738 110 407	0.228	d63 - d225	28	92 + d/2



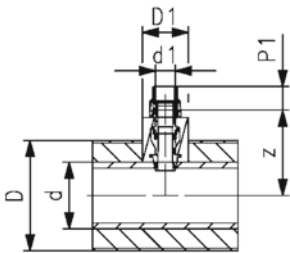
COOL-FIT 4.0 Weld-in port PE/Sanipex MT

Model:

- Material: PE100, brass with low lead content, dezincification resistant
- With Weld-in port cone (PE100) and Sanipex MT adaptor (brass) for the transition to Sanipex MT
- Gasket: O-ring EPDM
- Including insulation made from EPDM foam

Note:

For pipes COOL-FIT 4.0 and COOL-FIT 4.0F of the dimensions d63-d225



d1 (mm)	PN (bar)	Code	Weight (kg)	d	db1	D1	P1	z
32	16	738 113 508	0.245	d63 - d225	11.8	78	39	49 + d/2



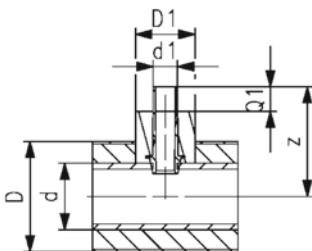
COOL-FIT 4.0 Weld-in port PE spigot

Model:

- Material: PE100
- With Weld-in port cone (PE100) and metric spigot SDR11 for transitions to COOL-FIT 4.0 fittings type A or PE Fittings
- Including insulation made from EPDM foam

Note:

For pipes COOL-FIT 4.0 and COOL-FIT 4.0F



d1 (mm)	SDR	PN (bar)	Code	Weight (kg)	d	D1	Q1	z
32	11	16	738 113 608	0.075	d63 - d225	78	36	125 + d/2
40	11	16	738 113 609	0.107	d75 - d225	85	40	131 + d/2
50	11	16	738 113 610	0.163	d90 - d225	110	44	140 + d/2

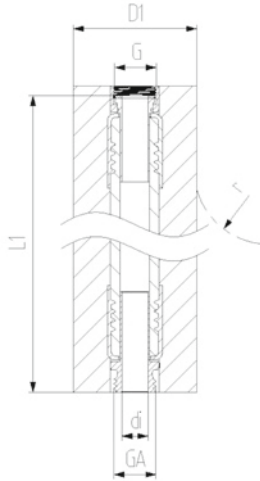
COOL-FIT 4.0 Flexible Hoses

COOL-FIT 4.0 Flex hose



Model:

- EPDM flexible hose with stainless steel protection
- Adaptors stainless steel 1.4404 / 316L
- Pre-Insulation made from EPDM foam with outer jacket impact resistant and tearproof
- With loose union nut G on one end and male thread GA on the other



d (mm)	D1 (mm)	Thread	Size (inch)	DN (mm)	PN (bar)	Code	L1 (mm)	di (mm)	r (mm)
20	72	G/GA	½	15	10	738 923 206	1000	15	119
25	82	G/GA	¾	20	10	738 923 207	1000	19	156
32	92	G/GA	1	25	10	738 923 208	1000	25	192
40	95	G/GA	1 ¼	32	8	738 923 209	1500	32	252
50	110	G/GA	1 ½	40	6	738 923 210	2000	38	312
63	123	G/GA	2	50	6	738 923 211	2000	52	372

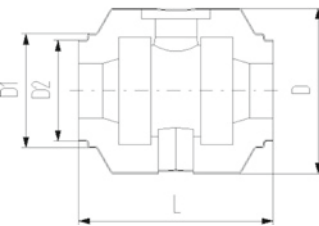
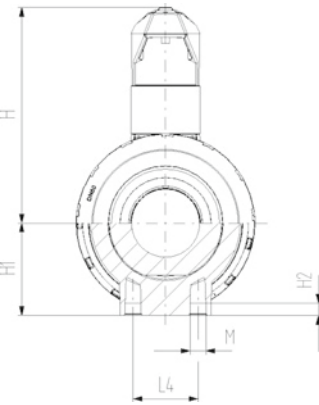
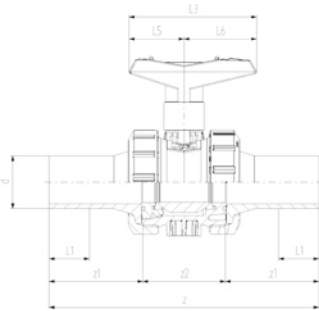
COOL-FIT 4.0 Valves



COOL-FIT 4.0 Ball valve type 546 Pro hand-operated

Model:

- Material: ABS with spigot PE100 SDR11, metric
- Ball seat PTFE
- Integrated stainless steel mounting inserts
- Including insulation half shells
- Separate Fittings type A needed for joining



d (mm)	DN (mm)	PN	kv-value ($\Delta p=1$ bar) (l/min)	SDR	EPDM Code	Weight (kg)
32	25	10	700	11	138 546 108	0.542
40	32	10	1000	11	138 546 109	0.887
50	40	10	1600	11	138 546 110	1.165
63	50	10	3100	11	138 546 111	2.100
75	65	10	5000	11	138 546 112	5.125
90	80	10	7000	11	138 546 113	7.173

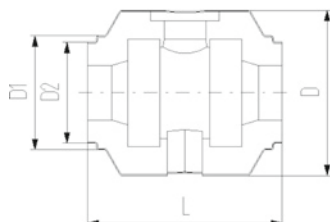
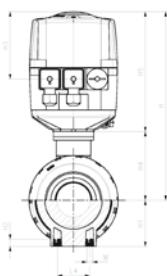
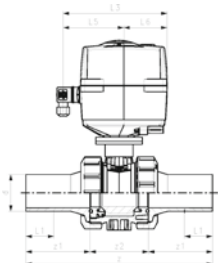
d (mm)	D (mm)	D1 (mm)	D2 (mm)	L (mm)	L1 (mm)	L3 (mm)	H (mm)	H1 (mm)	H2 (mm)	z (mm)	z1 (mm)	z2 (mm)
32	135	97	82	152	36	97	98	36	12	223	76	76
40	157	117	97	170	40	128	119	44	15	249	82	82
50	169	117	97	184	44	128	125	51	15	271	91	91
63	204	132	117	227	48	152	150	64	15	321	110	110
75	235	147	132	276	55	270	194	85	15	386	125	125
90	255	168	147	297	62	270	200	105	15	421	140	140

COOL-FIT 4.0 Ball valve type 179
100-230V



Model:

- Material: ABS with spigot PE100 SDR11, metric
- Ball seat PTFE
- Integrated stainless steel mounting inserts
- Voltage 100-230V, 50-60Hz
- Factory set control range 90°
- Heating element, position feedback (Open/Close/ Middle)
- Including insulation half shells
- Separate Fittings type A needed for joining



d (mm)	DN (mm)	PN (bar)	kv-value (dp=1 bar)	SDR	Code	Weight (kg)
32	25	10	700	11	138 546 208	2.838
40	32	10	1000	11	138 546 209	3.174
50	40	10	1600	11	138 546 210	3.452
63	50	10	3100	11	138 546 211	4.475
75	65	10	5000	11	138 546 212	7.156
90	80	10	7000	11	138 546 213	13.000

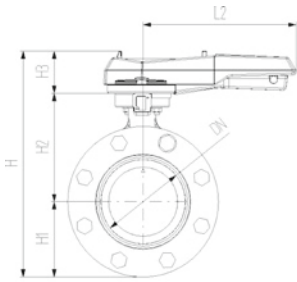
d (mm)	D (mm)	D1 (mm)	D2 (mm)	H (mm)	H1 (mm)	H2 (mm)	L (mm)	L1 (mm)	L3 (mm)	L4 (mm)	M	z (mm)	z1 (mm)	z2 (mm)
32	135	97	82	228	36	12	152	36	190	25	M6	223	76	71
40	157	117	97	240	44	15	170	40	190	45	M8	249	82	85
50	169	117	97	246	51	15	184	44	190	45	M8	271	91	89
63	204	132	117	263	64	15	227	48	190	45	M8	321	110	101
75	235	147	132	322	85	15	276	55	190	70	M8	386	125	136
90	255	168	147	357	105	15	297	62	190	70	M8	421	140	141



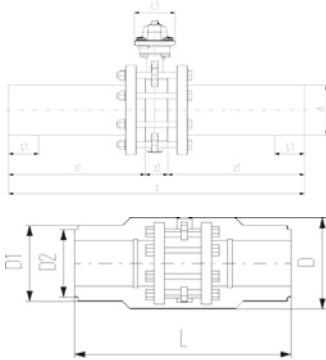
COOL-FIT 4.0 Wafer-style butterfly valve kit type 567 Hand lever with ratchet settings

Model:

- Material: ABS with spigot PE100 SDR11, metric
- Including flange adaptors, backing flanges PP-Steel, bolts and insulation half shells
- Separate Fittings type A needed for joining



d (mm)	DN (mm)	PN	kv-value ($\Delta p=1$ bar) (L/min)	EPDM Code	Weight (kg)
110	100	10	6500	138 567 114	8.950
140	125	10	11500	138 567 116	15.751
160	150	10	16600	138 567 117	17.975
225	200	10	39600	138 567 120	28.316

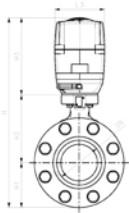


d (mm)	D (mm)	D1 (mm)	D2 (mm)	L (mm)	L1 (mm)	L2 (mm)	L3 (mm)	H (mm)	H1 (mm)	H2 (mm)	H3 (mm)	z (mm)	z1 (mm)	z2 (mm)
110	310	188	168	556	72	255.0	106	325	104	167	55	696	320	56
140	280	233	222	670	84	252.5	58	369	119	180	70	830	383	64
160	358	259		720	90	255.0	115	401	143	203	55	895	412	72
225	409	325		776	110	408.0	149	465	170	210	85	996	462	73

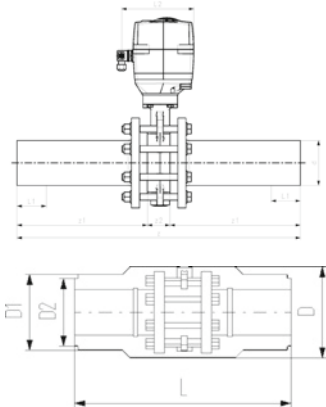
COOL-FIT 4.0 Wafer-style butterfly valve kit type 145 100-230V

Model:

- Material: ABS with spigot PE100 SDR11, metric
- Voltage 100-230V, 50-60Hz
- Factory set control range 90°
- Heating element, position feedback (Open/Close/ Middle)
- Including flange adaptors, backing flanges PP-Steel, bolts and insulation half shells
- Separate Fittings type A needed for joining



d (mm)	DN (mm)	PN	kv-value ($\Delta p=1$ bar) (L/min)	EPDM Code	Weight (kg)
110	100	10	6500	138 567 214	13.320
140	125	10	11500	138 567 216	18.650
160	150	10	16500	138 567 217	22.346
225	200	10	39600	138 567 220	36.037



d (mm)	D (mm)	D1 (mm)	D2 (mm)	L (mm)	L1 (mm)	L2 (mm)	L3 (mm)	H (mm)	H1 (mm)	H2 (mm)	H3 (mm)	z (mm)	z1 (mm)	z2 (mm)
110	310	188	168	552	72	179	122	460	104	167	190	696	320	56
140	280	233	222	670	84	172	179	475	119	173	183	830	383	64
160	358	259		720	90	179	122	535	143	203	190	895	412	72
225	409	325		776	110	179	122	580	170	210	200	996	462	73



Wafer-style, intermediate installation butterfly valve type 565 PVDF/PA-GF

With hand lever

Flange standard metric/ANSI/BS/JIS

Suitable for ABS, PVC-U, PVC-C, ecoFIT, COOL-FIT and PROGEF Systems

Model:

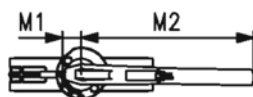
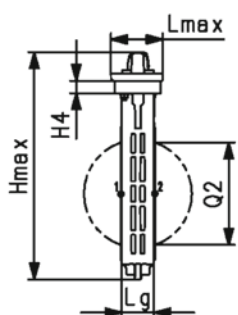
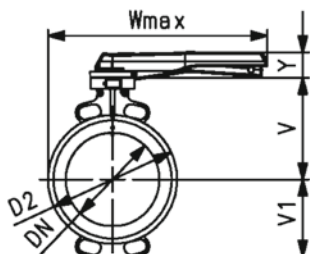
- Installation length: EN558 row 20, ISO 5752 row 20, API 609 table 2
- Flange standards: ISO 7005 PN10/16, EN 1092 PN10/16, DIN 2501 PN10/16, ANSI/ASME B 16.5 Class 150, BS 1560: 1989 Class 125/150; BS 4504 PN10/16, JIS B 2220 10K, JIS B 2239 10K
- For easy installation and removal
- Lockable ergonomic lever
- Suitable for water and water treatment applications (e.g. sea water, drinking water and industrial water)

Option:

- Individual configuration of the valve possible
- Pneumatic or electric actuators from GF
- Double sensor for electrical position feedback incl. LED feedback

Note:

For some material combination (e.g. DN300 valves with PE/PP pipes) special flange adapters are needed. Please check the "Perfect flange connection tool" on www.gfps.com



d	Size	DN	PN	kv-value	EPDM	SP	Weight
(mm)	(inch)	(mm)	(bar)	($\Delta p=1$ bar)	Code		(kg)
				(L/min)			
63	2	50	16	1445	199 565 000	1	1.3
75	2 ½	65	16	2530	199 565 001	1	1.5
90	3	80	16	4020	199 565 002	1	1.7
110	4	100	16	5850	199 565 003	1	2.5
140	5	125	16	11900	199 565 004	1	3.1
160	6	150	16	18050	199 565 005	1	4.0
225	8	200	10	43667	199 565 006	1	5.3

d	D2	Wmax	Hmax	Lmax	H4	V	V1	Lg	M1	M2	Y	Q2
(mm)	(mm)	(mm)	(mm)	(mm)	(mm)	(mm)	(mm)	(mm)	(mm)	(mm)	(mm)	(mm)
63	100.0	264.0	249.5	96.0	23.0	133.5	63.0	43.0	35.5	204.5	53.0	28.5
75	121.0	271.0	275.5	96.0	23.0	140.0	82.0	46.0	35.5	204.5	53.0	44.0
90	138.0	273.5	288.0	96.0	23.0	146.0	89.0	46.0	35.5	204.5	53.0	63.5
110	158.5	334.0	324.0	96.0	23.0	166.5	104.0	52.0	35.5	254.5	53.0	84.0
140	187.0	348.0	351.0	96.0	23.0	180.0	118.0	56.0	35.5	254.5	53.0	110.5
160	213.0	426.0	372.5	96.0	23.0	189.0	130.5	56.0	35.5	319.5	53.0	137.5
225	267.0	453.0	422.0	96.0	23.0	209.5	159.0	60.0	35.5	319.5	53.0	190.5



Wafer-style intermediate installation butterfly valve type 565 PVDF/PA-GF
With electric actuator 230V
Without manual override
Flange standard metric/ANSI/BS/JIS
Suitable for ABS, PVC-U, PVC-C, ecoFIT, COOL-FIT and PROGEF Systems

Model:

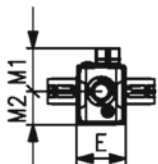
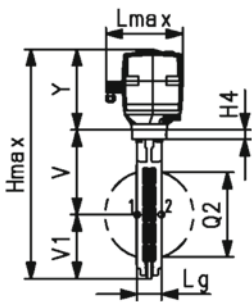
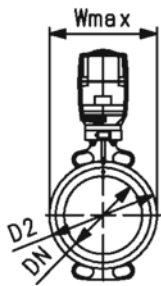
- Installation length: EN558 row 20, ISO 5752 row 20, API 609 table 2
- Flange standards: ISO 7005 PN10/16, EN 1092 PN10/16, DIN 2501 PN10/16, ANSI/ASME B 16.5 Class 150, BS 1560: 1989 Class 125/150; BS 4504 PN10/16, JIS B 2220 10K, JIS B 2239 10K
- For easy installation and removal
- Voltage 100-230V, 50-60Hz
- Factory set control range 0-90°
- Heating element, position feedback (Open/Close/ Middle)
- Manual override integrated in electric actuator
- Suitable for water and water treatment applications (e.g. sea water, drinking water and industrial water)
- Switching Ring for the double sensor for electrical position feedback is pre-assembled. Double sensor can be ordered as accessory

Option:

- Individual configuration of the valve possible
- Hand or pneumatic actuators from GF
- Double sensor for electrical position feedback incl. LED feedback
- Optional accessories: Fail-safe return unit, Monitoring board, Position controller, Profibus DP board
- Additional manual override between valve and actuator

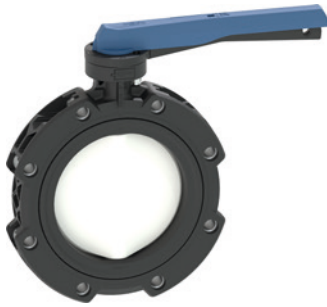
Note:

For some material combination (e.g. DN300 valves with PE/PP pipes) special flange adapters are needed. Please check the "Perfect flange connection tool" on www.gfps.com



d (mm)	DN (mm)	Size (inch)	PN (bar)	kv-value ($\Delta p=1$ bar) (L/min)	Actuator	EPDM Code	SP	Weight (kg)
63	50	2	10	1445	EA45	199 565 300	1	3.3
75	65	2 ½	10	2530	EA120	199 565 301	1	4.6
90	80	3	10	4020	EA120	199 565 302	1	4.7
110	100	4	10	5850	EA120	199 565 303	1	5.6
140	125	5	10	11900	EA120	199 565 304	1	6.1
160	150	6	10	18050	EA250	199 565 305	1	8.7
225	200	8	10	43667	EA250	199 565 306	1	10.0
280	250	10	6	62333	EA250	199 565 307	1	14.5
315	300	12	4	94500	EA250	199 565 308	1	18.2

d (mm)	D2 (mm)	Wmax (mm)	Hmax (mm)	Lmax (mm)	H4 (mm)	V (mm)	V1 (mm)	Lg (mm)	E (mm)	M1 (mm)	M2 (mm)	Y (mm)	Q2 (mm)
63	100.0	122.5	377.5	190.0	23	133.5	63.0	43	122.5	107.5	83	166.5	28.5
75	121.0	132.5	411.5	190.0	23	140.0	82.0	46	122.5	107.5	83	189.5	44.0
90	138.0	137.5	424.0	190.0	23	146.0	89.0	46	122.5	107.5	83	189.5	63.5
110	158.5	158.5	459.5	190.0	23	166.5	104.0	52	122.5	107.5	83	189.5	84.0
140	187.0	187.0	487.5	190.0	23	180.0	118.0	56	122.5	107.5	83	189.5	110.5
160	213.0	213.0	518.5	190.0	23	189.0	130.5	56	122.5	107.5	83	199.5	137.5
225	267.0	267.0	568.0	190.0	23	209.5	159.0	60	122.5	107.5	83	199.5	190.5
280	325.5	325.5	674.5	190.0	23	262.5	195.5	68	122.5	107.5	83	216.5	239.0
315	380.0	380.0	731.0	190.0	23	284.5	230.5	78	122.5	107.5	83	216.5	285.5



Lug-style end installation butterfly valve type 565L PVDF/PA-GF
With hand lever
Flange standard ISO/Metric
Suitable for ABS, PVC-U, PVC-C, ecoFIT, COOL-FIT and PROGEF Systems

Model:

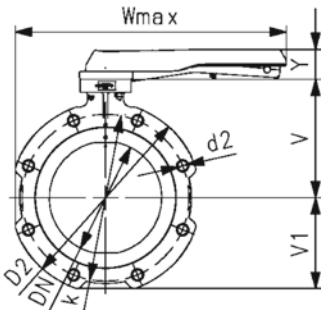
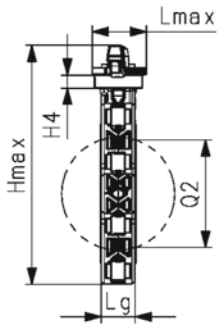
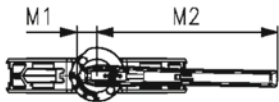
- Installation length: EN558 row 20, ISO 5752 row 20, API 609 table 2
- Flange standards: ISO 7005 PN10/16, EN 1092 PN10/16, DIN 2501 PN10/16
- For easy installation and removal
- Lockable ergonomic lever
- Suitable for water and water treatment applications (e.g. sea water, drinking water and industrial water)

Option:

- Individual configuration of the valve possible
- Pneumatic or electric actuators from GF
- Double sensor for electrical position feedback incl. LED feedback

Note:

For some material combination (e.g. DN300 valves with PE/PP pipes) special flange adapters are needed. Please check the "Perfect flange connection tool" on www.gfps.com



d (mm)	DN (mm)	Size (inch)	PN (bar)	kv-value ($\Delta p=1$ bar) (L/min)	EPDM Code	Weight (kg)
63	50	2	16	1445	199 575 000	1.308
75	65	2 ½	16	2530	199 575 001	1.542
90	80	3	16	4020	199 575 002	1.712
110	100	4	16	5850	199 575 003	4.102
140	125	5	16	11900	199 575 004	3.086
160	150	6	16	18050	199 575 005	4.029
225	200	8	10	43667	199 575 006	5.276

d (mm)	DN (mm)	Hmax (mm)	Lmax (mm)	Wmax (mm)	V (mm)	V1 (mm)	Y (mm)	Lg (mm)	Q2 (mm)	k (mm)	d2 (mm)	D2 (mm)	H4 (mm)	M1 (mm)
63	50	256.4	96	274.5	133.3	70.1	53	43	28.3	125	M16	155	23	35.5
75	65	273.7	96	285.0	139.9	80.8	53	46	43.8	145	M16	175	23	35.5
90	80	289.9	96	294.5	145.6	91.3	53	46	63.5	160	M16	190	23	35.5
110	100	325.6	96	360.0	166.4	106.2	53	52	83.7	180	M16	221	23	35.5
140	125	353.3	96	374.0	180.0	120.3	53	56	110.4	210	M16	250	23	35.5
160	150	374.4	96	454.5	189.0	132.4	53	56	137.3	240	M20	277	23	35.5
225	200	422.8	96	482.5	209.5	160.3	53	60	191.1	295	M20	337	23	35.5

d (mm)	DN (mm)	M2 (mm)
63	50	204.5
75	65	204.5
90	80	204.5
110	100	254.5
140	125	254.5
160	150	319.5
225	200	319.5



Lug-style end installation butterfly valve type 565L PVDF/PA-GF
With hand lever
Flange standard ANSI / ASTM / ASME
Suitable for ABS, PVC-U, PVC-C, ecoFIT, COOL-FIT and PROGEF Systems

Model:

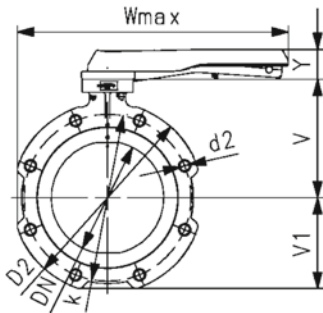
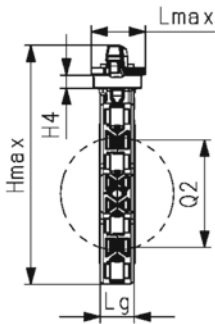
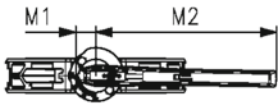
- Installation length: EN558 row 20, ISO 5752 row 20, API 609 table 2
- Flange standards: ANSI/ASME B 16.5 Class 150, BS 1560: 1989 Class 125/150; BS 4504 PN10/16
- For easy installation and removal
- Suitable for water and water treatment applications (e.g. sea water, drinking water and industrial water)

Option:

- Individual configuration of the valve possible
- Hand or electric actuators from GF
- Double sensor for electrical position feedback incl. LED feedback
- Optional accessories: Fail-safe return unit, Monitoring board, Position controller, Profibus DP board

Note:

For some material combination (e.g. DN300 valves with PE/PP pipes) special flange adapters are needed. Please check the "Perfect flange connection tool" on www.gfps.com



d (mm)	DN (mm)	Size (inch)	PN (bar)	kv-value ($\Delta p=1$ bar) (L/min)	EPDM Code	Weight (kg)
63	50	2	16	1445	199 576 000	1.308
75	65	2 ½	16	2530	199 576 001	1.542
90	80	3	16	4020	199 576 002	1.712
110	100	4	16	5850	199 576 003	2.517
140	125	5	16	11900	199 576 004	3.086
160	150	6	16	18050	199 576 005	4.029
225	200	8	10	43667	199 576 006	5.276

d (mm)	DN (mm)	Hmax (mm)	Lmax (mm)	Wmax (mm)	V (mm)	V1 (mm)	Y (mm)	Lg (mm)	Q2 (mm)	k (mm)	d2 (mm)	D2 (mm)	H4 (mm)
63	50	256.4	96	274.5	133.3	70.1	53	43	28.3	120.7	UNC 5/8	155	23
75	65	273.7	96	285.0	139.9	80.8	53	46	43.8	139.7	UNC 5/8	175	23
90	80	289.9	96	294.5	145.6	91.3	53	46	63.5	152.4	UNC 5/8	190	23
110	100	325.6	96	360.0	166.4	106.2	53	52	83.7	190.5	UNC 5/8	221	23
140	125	353.3	96	374.0	180.0	120.3	53	56	110.4	215.9	UNC 3/4	250	23
160	150	374.4	96	454.5	189.0	132.4	53	56	137.3	241.3	UNC 3/4	277	23
225	200	422.8	96	482.5	209.5	160.3	53	60	191.1	298.5	UNC 3/4	337	23

d (mm)	DN (mm)	M1 (mm)	M2 (mm)
63	50	35.5	204.5
75	65	35.5	204.5
90	80	35.5	204.5
110	100	35.5	204.5
140	125	35.5	204.5
160	150	35.5	319.5
225	200	35.5	319.5



Lug-style end installation butterfly valve type 565L PVDF/PA-GF
With electric actuator 230V
Flange standard ISO/Metric
Suitable for ABS, PVC-U, PVC-C, ecoFIT, COOL-FIT and PROGEF Systems

Model:

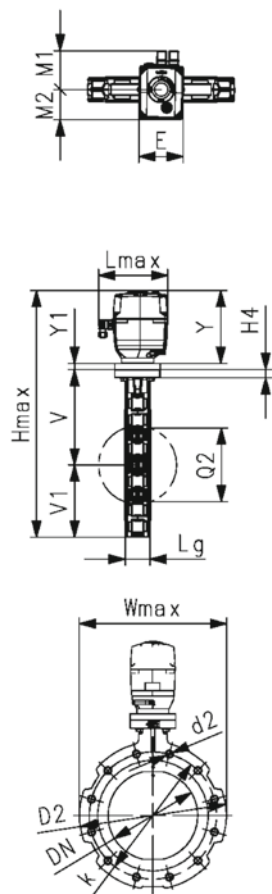
- Installation length: EN558 row 20, ISO 5752 row 20, API 609 table 2
- Flange standards: ISO 7005 PN10/16, EN 1092 PN10/16, DIN 2501 PN10/16
- For easy installation and removal
- Voltage 100-230V, 50-60Hz
- Factory set control range 0-90°
- Heating element, position feedback (Open/Close/ Middle)
- Manual override integrated in electric actuator
- Suitable for water and water treatment applications (e.g. sea water, drinking water and industrial water)

Option:

- Individual configuration of the valve possible
- Hand or pneumatic actuators from GF
- Double sensor for electrical position feedback incl. LED feedback
- Optional accessories: Fail-safe return unit, Monitoring board, Position controller, Profibus DP board
- Additional manual override between valve and actuator

Note:

For some material combination (e.g. DN300 valves with PE/PP pipes) special flange adapters are needed. Please check the "Perfect flange connection tool" on www.gfps.com



d (mm)	DN (mm)	Size (inch)	PN (bar)	kv-value ($\Delta p=1$ bar) (L/min)	Actuator	EPDM Code	Weight (kg)
63	50	2	10	1445	EA45	199 575 300	3.300
75	65	2 ½	10	2530	EA120	199 575 301	4.600
90	80	3	10	4020	EA120	199 575 302	4.700
110	100	4	10	5850	EA120	199 575 303	5.600
140	125	5	10	11900	EA120	199 575 304	6.100
160	150	6	10	18050	EA250	199 575 305	8.700
225	200	8	10	43667	EA250	199 575 306	10.000
280	250	10	6	62333	EA250	199 575 307	14.500
315	300	12	4	94500	EA250	199 575 308	18.200

d (mm)	DN (mm)	Hmax (mm)	Lmax (mm)	Wmax (mm)	V (mm)	V1 (mm)	Y (mm)	Lg (mm)	Q2 (mm)	k (mm)	d2 (mm)	D2 (mm)	H4 (mm)	E (mm)
63	50	384.6	190	140	133.3	70.1	166.2	43	28.3	125	M16	155	23	122.3
75	65	410.0	190	161	139.9	80.8	189.3	46	43.8	145	M16	175	23	122.3
90	80	426.2	190	180	145.6	91.3	189.3	46	63.5	160	M16	190	23	122.3
110	100	461.9	190	211	166.4	106.2	189.3	52	83.7	180	M16	221	23	122.3
140	125	489.6	190	239	180.0	120.3	189.3	56	110.4	210	M16	250	23	122.3
160	150	520.7	190	263	189.0	132.4	199.3	56	137.3	240	M20	277	23	122.3
225	200	569.1	190	319	209.5	160.3	199.3	60	191.1	295	M20	337	23	122.3
280	250	677.9	190	403	262.5	199.1	199.3	68	238.9	350	M20	403	23	122.3
315	300	736.1	190	482	284.3	235.5	199.3	78	285.5	400	M20	479	23	122.3

d (mm)	DN (mm)	Y1 (mm)	M1 (mm)	M2 (mm)
63	50	15	107.3	82.7
75	65		107.3	82.7
90	80		107.3	82.7
110	100		107.3	82.7
140	125		107.3	82.7
160	150		107.3	82.7
225	200		107.3	82.7
280	250	17	107.3	82.7
315	300	17	107.3	82.7



Lug-style end installation butterfly valve type 565L PVDF/PA-GF
With electric actuator 230V
Flange standard ANSI / ASTM / ASME
Suitable for ABS, PVC-U, PVC-C, ecoFIT, COOL-FIT and PROGEF Systems

Model:

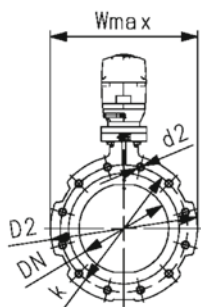
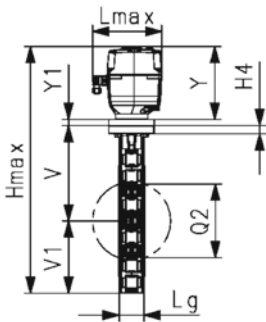
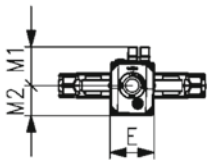
- Installation length: EN558 row 20, ISO 5752 row 20, API 609 table 2
- Flange standards: ANSI/ASME B 16.5 Class 150, BS 1560: 1989 Class 125/150; BS 4504 PN10/16
- For easy installation and removal
- Control time 0-90° 1-2s
- Control pressure supply through integrated NAMUR interface according VDI/VDE 3845 with 5.6 bar (81.2 psi)
- Full plastic solution (actuator housing made of PP-GF)
- Voltage 100-230V, 50-60Hz
- Factory set control range 0-90°
- Heating element, position feedback (Open/Close/ Middle)
- Manual override integrated in electric actuator
- Switching Ring for the double sensor for electrical position feedback is pre-assembled. Double-sensor can be ordered as accessory
- Suitable for water and water treatment applications (e.g. sea water, drinking water and industrial water)

Option:

- Individual configuration of the valve possible
- Hand or electric actuators from GF
- Double sensor for electrical position feedback incl. LED feedback
- Optional accessories: Fail-safe return unit, Monitoring board, Position controller, Profibus DP board

Note:

For some material combination (e.g. DN300 valves with PE/PP pipes) special flange adapters are needed. Please check the "Perfect flange connection tool" on www.gfps.com

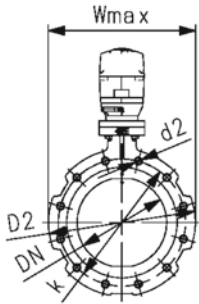
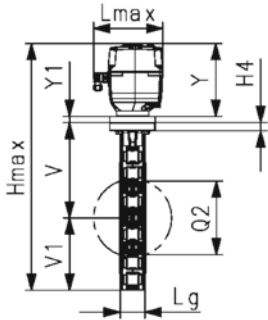
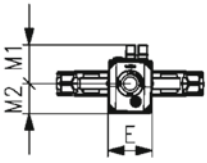


d (mm)	DN (mm)	Size (inch)	PN (bar)	kv-value ($\Delta p=1$ bar) (L/min)	Actuator	EPDM Code	Weight (kg)
63	50	2	16	1445	EA45	199 576 300	3.300
75	65	2 ½	16	2530	EA120	199 576 301	4.600
90	80	3	16	4020	EA120	199 576 302	4.700
110	100	4	16	5850	EA120	199 576 303	5.600
140	125	5	16	11900	EA120	199 576 304	6.100
160	150	6	16	18050	EA250	199 576 305	8.700
225	200	8	10	43667	EA250	199 576 306	10.000
280	250	10	10	62333	EA250	199 576 307	14.500
315	300	12	6	94500	EA250	199 576 308	18.200

d (mm)	DN (mm)	Hmax (mm)	Lmax (mm)	Wmax (mm)	V (mm)	V1 (mm)	Y (mm)	Lg (mm)	Q2 (mm)	k (mm)	d2 (mm)	D2 (mm)	H4 (mm)
63	50	384.6	190	140	133.3	70.1	166.2	43	28.3	120.7	UNC 5/8	155	23
75	65	410.0	190	161	139.9	80.8	189.3	46	43.8	139.7	UNC 5/8	175	23
90	80	426.2	190	180	145.6	91.3	189.3	46	63.5	152.4	UNC 5/8	190	23
110	100	461.9	190	211	166.4	106.2	189.3	52	83.7	190.5	UNC 5/8	221	23
140	125	489.6	190	239	180.0	120.3	189.3	56	110.4	215.9	UNC 3/4	250	23
160	150	520.7	190	263	189.0	132.4	199.3	56	137.3	241.3	UNC 3/4	277	23
225	200	569.1	190	319	209.5	160.3	199.3	60	191.1	298.5	UNC 3/4	337	23
280	250	677.9	190	403	262.5	199.1	199.3	68	238.9	362.0	UNC 7/8	403	23
315	300	736.1	190	482	284.3	235.5	199.3	78	285.5	431.8	UNC 7/8	479	23

d (mm)	DN (mm)	E (mm)	Y1 (mm)	M1 (mm)	M2 (mm)
63	50	122.3	15	107.3	82.7
75	65	122.3		107.3	82.7
90	80	122.3		107.3	82.7
110	100	122.3		107.3	82.7
140	125	122.3		107.3	82.7

d	DN	E	Y1	M1	M2
(mm)	(mm)	(mm)	(mm)	(mm)	(mm)
160	150	122.3		107.3	82.7
225	200	122.3		107.3	82.7
280	250	122.3	17	107.3	82.7
315	300	122.3	17	107.3	82.7



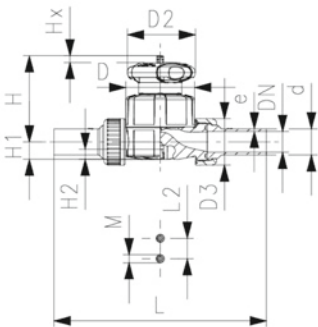
ABS Diaphragm valve type 514 With butt fusion spigots long

Model:

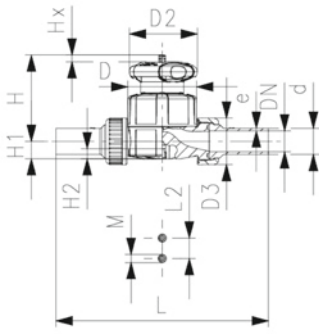
- Double flow rate compared to predecessor
- One housing nut replaces four screws
- Handwheel with built-in locking mechanism
- For easy installation and removal
- Short overall length

Option:

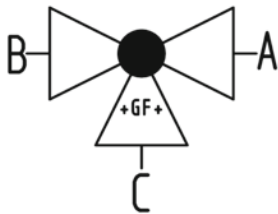
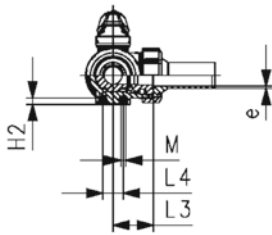
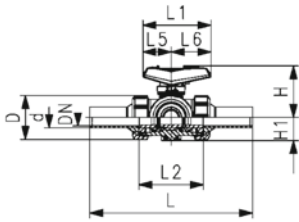
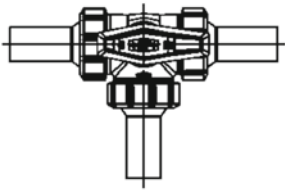
- Individual configuration of the valve
- Self adjusting multifunctional module with integrated limit switches



d	DN	Size	PN	kv-value	EPDM
(mm)	(mm)	(inch)	(bar)	($\Delta p=1$ bar)	Code
					(l/min)
20	15	½	10	125	169 514 312
25	20	¾	10	271	169 514 313
32	25	1	10	481	169 514 314
40	32	1 ¼	10	759	169 514 315
50	40	1 ½	10	1263	169 514 316
63	50	2	10	1728	169 514 317



d (mm)	DN (mm)	D (mm)	D2 (mm)	D3 (mm)	H (mm)	H1 (mm)	H2 (mm)	L (mm)	L2 (mm)	M	z (mm)	Lift = Hx (mm)	closest inch (inch)
20	15	65	65	43	73	14	12	230	25	M6	96	7	½
25	20	80	65	51	81	18	12	256	25	M6	114	10	¾
32	25	88	87	58	107	22	12	268	25	M6	122	13	1
40	32	101	87	72	115	26	15	302	45	M8	140	15	1 ¼
50	40	117	135	83	148	32	15	334	45	M8	160	19	1 ½
63	50	144	135	100	166	39	15	376	45	M8	190	25	2



ecoFIT 3-Way ball valve type 543 Pro ABS
Horizontal/L-port
With butt fusion spigots long PE100 SDR11 metric

Model:

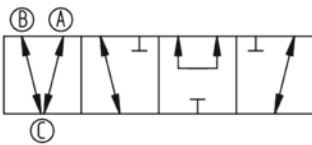
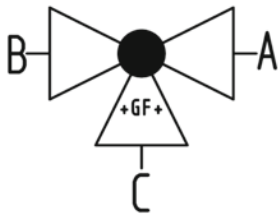
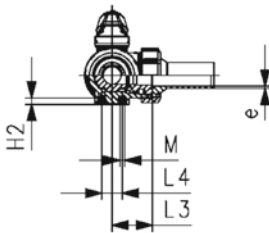
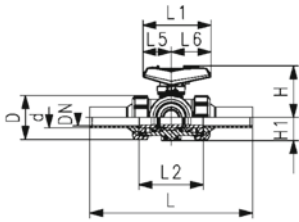
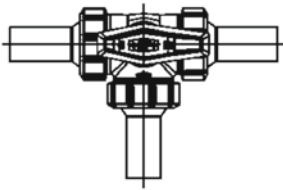
- Lockable lever as standard (DN10-DN50)
- Material: ABS/PE
- For easy installation and removal (valve end and union nut are compatible with type 546)
- Ball seat PTFE
- Angle of operation 360° without turn limiter
- Turn limiter 90° enclosed, in different positions usable as a clip-on ring
- Integrated stainless steel mounting inserts
- Delivery status A-C opened, see flow scheme
- Z-dimension, valve end and union nut are compatible with type 543 (1stGeneration)

Option:

- Interface-module with position feedback sensor, incl. LED feedback (DN10-50)
- Manual spring return lever ("Dead man") (DN10-25)
- Pneumatic or electric actuators from GF
- Individual configuration of the valve possible

d	DN	Size	PN	kv-value	EPDM	Weight
(mm)	(mm)	(inch)	(bar)	($\Delta p=1$ bar)	Code	(kg)
				(l/min)		
20	15	½	10	75	169 543 302	0.203
25	20	¾	10	150	169 543 303	0.296
32	25	1	10	280	169 543 304	0.450
40	32	1 ¼	10	480	169 543 305	0.762
50	40	1 ½	10	620	169 543 306	1.161
63	50	2	10	1230	169 543 307	2.509

d	DN	D	L	L1	L2	L3	L4	L5	L6	H	H1	H2	M	e	closest
(mm)	(mm)	(mm)	(mm)	(mm)	(mm)	(mm)	(mm)	(mm)	(mm)	(mm)	(mm)	(mm)	(mm)	(mm)	inch
															(inch)
20	15	50	210	82	73	36	25	35	47	61	28	8	6	1.9	½
25	20	58	237	106	86	43	25	44	62	74	32	8	6	2.3	¾
32	25	68	251	106	99	50	25	44	62	80	36	8	6	2.9	1
40	32	84	283	131	120	60	45	57	74	95	45	9	8	3.7	1 ¼
50	40	97	319	131	137	69	45	57	74	102	51	9	8	4.6	1 ½
63	50	124	399	152	179	89	45	66	86	117	65	9	8	5.8	2



ecoFIT 3-Way ball valve type 543 Pro ABS
Horizontal/T-port
With butt fusion spigots long PE100 SDR11 metric

Model:

- Material: ABS/PE
- Lockable lever as standard (DN10-DN50)
- For easy installation and removal (valve end and union nut are compatible with type 546)
- Ball seat PTFE
- Angle of operation 360° without turn limiter
- Turn limiter 90° enclosed, in different positions usable as a clip-on ring
- Integrated stainless steel mounting inserts
- Delivery status A-B-C opened, see flow scheme
- Z-dimension, valve end and union nut are compatible with type 543 (1stGeneration)

Option:

- Interface-module with position feedback sensor, incl. LED feedback (DN10-50)
- Manual spring return lever ("Dead man") (DN10-25)
- Pneumatic or electric actuators from GF
- Individual configuration of the valve possible

d	DN	Size	PN	kv-value	EPDM	Weight
(mm)	(mm)	(inch)	(bar)	($\Delta p=1$ bar)	Code	(kg)
				(l/min)		
20	15	½	10	200	169 543 322	0.203
25	20	¾	10	470	169 543 323	0.296
32	25	1	10	793	169 543 324	0.450
40	32	1 ¼	10	1290	169 543 325	0.762
50	40	1 ½	10	1910	169 543 326	1.161
63	50	2	10	3100	169 543 327	2.509

d	DN	D	L	L1	L2	L3	L4	L5	L6	H	H1	H2	M	e	closest
(mm)	(mm)	(mm)	(mm)	(mm)	(mm)	(mm)	(mm)	(mm)	(mm)	(mm)	(mm)	(mm)	(mm)	(mm)	inch
															(inch)
20	15	50	210	82	73	36	25	35	47	61	28	8	6	1.9	½
25	20	58	237	106	86	43	25	44	62	74	32	8	6	2.3	¾
32	25	68	251	106	99	50	25	44	62	80	36	8	6	2.9	1
40	32	84	283	131	120	60	45	57	74	95	45	9	8	3.7	1 ¼
50	40	97	319	131	137	69	45	57	74	102	51	9	8	4.6	1 ½
63	50	124	399	152	179	89	45	66	86	117	65	9	8	5.8	2

COOL-FIT 4.0 Accessories



COOL-FIT 4.0 Assembly Aid-Kit Type B

Model:

- For simplified mounting of COOL-FIT 4.0 Fitting on COOL-FIT 4.0 Pipe

d (mm)	D (mm)	Code	Weight (kg)	pieces/kit
32	90	799 738 511	0.384	6
40 - 50	110	799 738 512	0.456	6
63	125	799 738 513	0.504	6
75	140	799 738 514	0.564	6
90	160	799 738 515	0.636	6
110	180	799 738 516	0.708	6
140	225	799 738 518	0.131	4
160	250	799 738 519	0.620	4
225	315	799 738 522	0.760	4

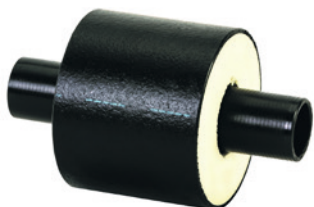


COOL-FIT 4.0 Assembly Aid-Kit Type A

Model:

- For simplified mounting of COOL-FIT 4.0 Fitting on COOL-FIT 4.0 Pipe

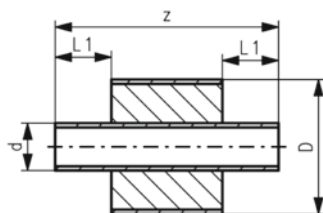
d (mm)	D (mm)	Code	Weight (kg)	pieces/kit
32 - 225	90 - 315	799 738 502	6.100	2 / Dimension



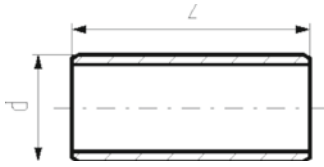
COOL-FIT 4.0 Barrel nipple with insulation, d32-d225

Model:

- Pre-insulated PE100 SDR11/17 metric
- Insulation made from GF HE foam
- Impact resistant. Color: black
- For short connections between COOL-FIT 4.0 Fittings Typ A



d (mm)	D (mm)	DN (mm)	SDR	PN (bar)	Code	Weight (kg)	L1 (mm)	z (mm)
32	90	25	11	16	738 913 408	0.126	36	151
40	110	32	11	16	738 913 409	0.188	40	155
50	110	40	11	16	738 913 410	0.226	44	163
63	125	50	11	16	738 913 411	0.328	48	171
75	140	65	11	16	738 913 412	0.447	55	185
90	160	80	11	16	738 913 413	0.631	62	199
110	180	100	11	16	738 913 414	0.929	72	219
140	225	125	11	16	738 913 416	1.101	84	243
160	250	150	17	10	738 913 417	1.576	90	255
225	315	200	17	10	738 913 420	3.254	110	295



COOL-FIT 2.0/4.0 Barrel nipple

Model:

- PE100, SDR11/17, metric
- For the shortest possible connection between fittings
- For media temperatures between 0°C up to 60°C
- COOL-FIT 2.0/4.0 Adhesive ring needed for joining

d (mm)	DN (mm)	SDR	PN	Code	Weight (kg)	z (mm)
32	25	11	16	738 910 408	0.020	76
40	32	11	16	738 910 409	0.034	80
50	40	11	16	738 910 410	0.059	88
63	50	11	16	738 910 411	0.101	96
75	65	11	16	738 910 412	0.162	110
90	80	11	16	738 910 413	0.264	124
110	100	11	16	738 910 414	0.454	144
140	125	11	16	738 910 416	0.855	168
160	150	17	10	738 910 417	0.798	180
225	200	17	10	738 910 420	1.885	220



COOL-FIT 2.0/4.0 adhesive ring

Model:

- Double sided, for sealing connections of fittings with barrel nipple

D (mm)	d (mm)	d COOL-FIT 4.0 (mm)	d COOL-FIT 2.0 (mm)	Code	Weight (kg)
75	32		32	738 010 012	0.002
90	32 - 50	32	40 - 50	738 010 013	0.002
110	40 - 63	40 - 50	63	738 010 014	0.003
125	63 - 75	63	75	738 010 015	0.003
140	75 - 90	75	90	738 010 016	0.003
160	90 - 110	90	110	738 010 017	0.005
180	110	110		738 010 018	0.005
200	140		140	738 010 019	0.006
225	140	140		738 010 020	0.009
250	160	160		738 010 021	0.009
315	225	225		738 010 023	0.027

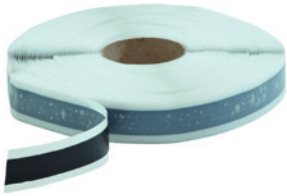


COOL-FIT 4.0 Sealing clamp-kit

Model:

- Supports the function of the top sealing lip of COOL-FIT 4.0 Fittings for vertical installations outdoor
- Material: stainless steel 304/V2A
- Color: black

d (mm)	D (mm)	Code	Weight (kg)	pieces/kit
32	90	738 013 013	0.250	6
40 - 50	110	738 013 014	0.300	6
63	125	738 013 015	0.300	6
75	140	738 013 016	0.300	6
90	160	738 013 017	0.300	6
110	180	738 013 018	0.300	6
140	225	738 013 020	0.300	6
160	250	738 013 021	0.390	6
225	315	738 013 023	0.450	6

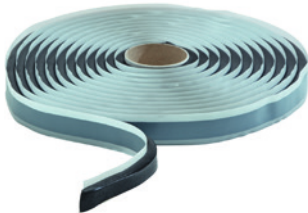


COOL-FIT 4.0 Sealing tape 25mm

Model:

- Supports the function of the top sealing lip of COOL-FIT 4.0 Fittings for vertical installations outdoor
- 30m on a roll, 25mm width, buthylene rubber-based

d (mm)	D (mm)	Code	Weight (kg)
32 - 225	90 - 315	738 013 031	1.400

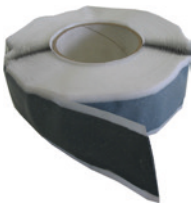


COOL-FIT 4.0 Transition of Insulation

Model:

- For a moistur-proof and vapour tight transition of insulations from COOL-FIT 4.0 to COOL-FIT 2.0
- 4.5m on a roll, buthylene rubber-based

d (mm)	D (mm)	Code	Weight (kg)
32-140	90-225	738 013 041	1.400



COOL-FIT 4.0 Sealing tape 40mm

Model:

- For a water- and steam-tight sealing of inspection gaps in combination with shrink sleeves/ - sockets
- Sealing tape: 40mm width, buthylene rubber-based
- 30 m on a roll

d-d (mm)	D (mm)	Code	Weight (kg)	Closest inch (inch)
250 - 450	355 - 630	738 011 152	2.134	10 - 18



COOL-FIT 4.0 insulation for welding indicator, coupler d250-d450

- Suitable for COOL-FIT 4.0 couplers d250-d450
- Insulation for welding pin and welding indicator opening
- 2.5m on a roll, 20mm diameter, closed-cell PE foam

d (mm)	Code	Weight (kg)
250 - 450	738 010 055	0.500



COOL-FIT 4.0 Shrink socket PE

Model:

- For a water- and steam-tight sealing in combination with buthylene rubber-based sealing tape
- Length: 150 mm
- "Heavy duty" version for high end applications
- For connections of the same pipe outer diameter

D (mm)	d (mm)	Code	SP	Weight (kg)	L (mm)
355	250	738 011 024	1	0.7	150
400	280	738 011 025	1	1.3	150
450	315	738 011 026	1	1.7	150
500	355	738 011 027	1	2.0	150
560	400	738 011 028	1	2.3	150
630	450	738 011 029	1	2.6	150



Cold shrink tape PE black

Model:

- For indoor use only
- Width (L) available in 100mm
- 15 m on a roll
- Shrinks without heat application

d-d (mm)	D (mm)	Code	Weight (kg)
25 - 450	90 - 630	738 011 107	1.400



Hot shrink tape PE black

Model:

- For watertight sealing of outer pipe in underground installations
- Mastic backed
- 30 m on a roll
- Shrink with a burner or hot air gun
- Order sealing patches separately (738 011 109)

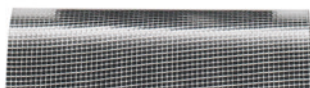
d-d (mm)	D (mm)	Code	Weight (kg)	L (mm)
250 - 450	355 - 630	738 011 108	3.000	150

Aussenrohr D/ jacket pipe D (mm)	Länge Schrumpfband/ shrink tape length (mm)
355	1210
400	1350
450	1500
500	1660
560	1850
630	2070

Sealing patch

Model:

- For sealing of hot-shrink-tape in underground installations
- Mastic backed
- 1 patch needed per seal



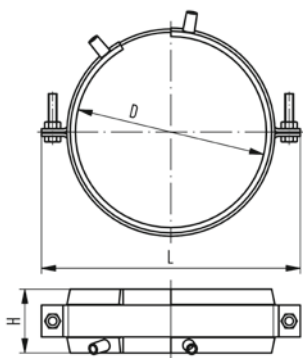
d-d (mm)	D (mm)	Code	Weight (kg)	L (mm)
25 - 450	90 - 630	738 011 109	0.100	150



COOL-FIT 2.0/4.0 Fixed point

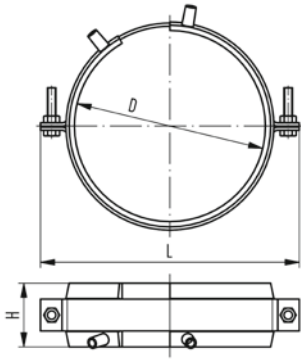
Model:

- The product consists of two components namely electrofusion tapes and pipe brackets.
- Electrofusion welded tape as permanent connection to transmit the forces that occur in the pipe to the fixed point.
- The delivered pipe brackets are needed to deliver welding pressure during installation and give stability during operation.
- For welding, use an MSA2.x, MSA4.x, MSA 250, 300, 350, 400 or commercially available 220 V fusion machines.
- If you use an MSA fusion machine from GF Piping Systems, use the 799 350 339 adapter or the 790 156 032 y-cable set.
- Please take note of the maximum allowed forces for this version in the table below.
- **Fixed point brackets and cross braces have to be calculated and obtained by the installer. They are not included in the fixed point set from GF.**



D (mm)	d (mm)	d COOL-FIT 4.0 (mm)	d COOL-FIT 2.0 (mm)	Code	Weight (kg)
75	32		32	738 912 012	0.750
90	32 - 50	32	40 - 50	738 912 013	0.895
110	40 - 63	40 - 50	63	738 912 014	0.904
125	63 - 75	63	75	738 912 015	1.103
140	75 - 90	75	90	738 912 016	1.188
160	90 - 110	90	110	738 912 017	1.177
180	110	110		738 912 018	1.530
200	140		140	738 912 019	1.600
225	140	140		738 912 020	1.813
250	160	160		738 912 021	1.957
315	225	225		738 912 023	2.388
355	250	250		738 912 024	2.388

D (mm)	d (mm)	L (mm)	H (mm)	max Force COOL-FIT 4.0 (kN)	max Force COOL-FIT 2.0 (kN)
75	32	150	60		2.0
90	32 - 50	170	60	2.0	3.0 / 5.0
110	40 - 63	180	60	3.0 / 5.0	8.0
125	63 - 75	215	60	8.0	10.0
140	75 - 90	220	60	10.0	10.0
160	90 - 110	255	60	10.0	10.0
180	110	255	60	10.0	
200	140	310	60		10.0



D (mm)	d (mm)	L (mm)	H (mm)	max Force COOL-FIT 4.0 (kN)	max Force COOL-FIT 2.0 (kN)
225	140	310	60	10.0	
250	160	335	60	10.0	
315	225	400	60	10.0	
355	250	420	60	10.0	



COOL-FIT Y cables kit

- The COOL-FIT Y cables are used to speed up the installation of the fixed points electrofusion tapes. The Y cables allow the welding in parallel of 2 E-Tapes, halving the total duration of the fusion process.
- Compatible with all MSA Units

Description	Code	Weight (kg)
4 leads cable with 2mm plugs in output	790 156 032	0.385

Hand scraper

- The Hand Scraper can be used to prepare the fusion zone on PE80 pipes.



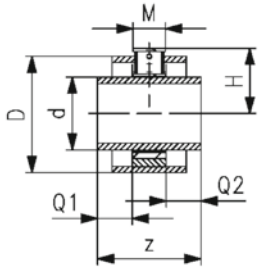
Description	Code	Weight (kg)
Hand scraper with long handle	799 198 094	0.143



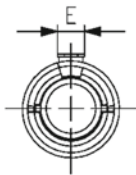
COOL-FIT 4.0 Fixpoint kit for high forces

Model:

- The product consists of fixpoint, pipe section and insulation kit
- Fixed point for installation between two electrofusion fittings, transmits the forces emanating from the pipe to the fixed point
- Pipe section PE100 SDR11, metric
- Fixpoint with welding plate made from S235JR (1.0038). With corrosion protection coating
- Insulation made from EPDM soft foam. For outdoor application use additional protection
- Please take note of the maximum allowed forces for this version in the table below.
- A force calculation of the fixpoint clamp and the attachment point is required
- For the bonding, adhesive 738010060 is recommended
- d355 to d450 on request with delivery time of 3 month.



d (mm)	D (mm)	DN (mm)	SDR	PN (bar)	Code	Weight (kg)
140	225	125	11	16	738 913 816	6.382
160	250	150	11	16	738 913 817	6.386
225	315	200	11	16	738 913 820	7.479
250	355	250	11	16	738 913 821	10.856
280	400	250	11	16	738 913 822	14.172
315	450	300	11	16	738 913 823	16.272



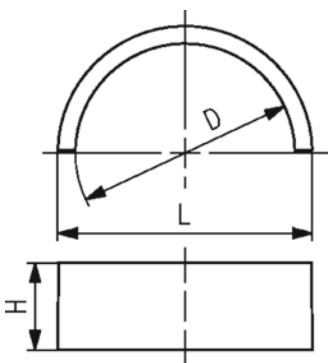
d (mm)	z (mm)	Q1 (mm)	Q2 (mm)	Dos (mm)	H (mm)	M (mm)	E (mm)	Wrench size (mm)	max. Force (kN)
140	268	84	84	251	136.5	100	100	24	35
160	280	90	90	283	165.5	100	100	24	35
225	320	110	110	360	205.0	100	100	24	35
250	346	123	123	391	213.5	100	100	24	35
280	352	126	126	436	231.0	100	100	24	35
315	366	133	133	486	279.0	100	180	24	35



COOL-FIT 4.0F fixed point set

Model:

- Four PVC-U half shells as permanent connection to transmit the forces that occur in the pipe to the fixed point.
- For cementing use Tangit RAPID, Tangit RAPID static mixer and Tangit RAPID dispenser
- Please take note of the maximum allowed forces for this version in the table below.
- **Fixed point brackets and cross braces have to be calculated and obtained by the installer. They are not included in the fixed point set from GF.**



d (mm)	D (mm)	Code	SP	Weight (kg)	L (mm)	H (mm)	max Force (kN)
160	250	738 912 321	1	1.957	284	35	10.0
225	315	738 912 323	1	2.388	356	35	10.0



Tangit Rapid cartridges kit

- 2-Component-Adhesive
- For PVC-U and PVC-C
- Tangit Rapid Kit consists of 6 cartridges, 12 mixers and 2 plastic brushes
- Tool needed: Tangit Rapid dispenser and mixers
- Check chemical resistance list (www.gfps.com)

Language	description	Code	Weight (kg)
DE, FR	50 ml	799 302 005	0.566
FR, NL	50 ml	799 302 041	0.566
DK, SE	50 ml	799 302 042	0.566
GB, IT	50 ml	799 302 043	0.566
FI, NO	50 ml	799 302 044	0.566
DE, ES, FR, GB, IT, NL, PT	400 ml	799 302 007	3.700
DK, FI, NO, SE	400 ml	799 302 047	3.700



Tangit Rapid mixer set

- For Tangit Rapid cartridges
- Bag with 30 pieces for 50ml and 15 pieces for 400ml

description	Code	SP	Weight (kg)
50ml	799 302 032	1	0.160
400ml	799 302 033	1	0.190



Tangit Rapid dispenser

- For Tangit Rapid cartridges

d-d (mm)	description	Code	SP	Weight (kg)
16 - 140	50ml	799 302 011	1	0.185
110 - 400	400ml	799 302 013	1	1.100

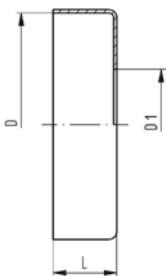


COOL-FIT 4.0 Endcap

Model:

- To protect the insulation at the end of a COOL-FIT 4.0 piping system

d (mm)	D (mm)	D1 (mm)	Code	Weight (kg)	L (mm)
250	355	265	733 960 185	0.155	35
280	400	300	733 960 186	0.185	35
315	450	335	733 960 187	0.225	35
355	500	370	733 963 188	0.269	35
400	560	420	733 963 189	0.269	35
450	630	470	733 963 190	0.269	35





Sealant

Model:

- For sealing and glueing of insulation of Weld-in ports and caps
- Cartridge à 290 ml

	Code	SP	Weight (kg)
290 ml	738 011 103	1	0.473

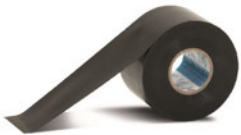


COOL-FIT 2.0/4.0 Adhesive cement

Model:

- For the jointing of NBR foam insulations of flexible hoses and transition fittings

	Code	SP	Weight (kg)
	738 010 060	1	0.240



COOL-FIT 2.0/4.0 Adhesive tape

Model:

- For the jointing of NBR foam insulations of flexible hoses and transition fittings
- 30m on a roll

	Code	SP	Weight (kg)
	738 010 065	1	0.400



Tangit KS Cleaner

- Special cleaner for plastic fusion connections in the material of PE, PP, PB, PVDF, ECTFE and PVC-U
- Suitable for Tangit Rapid. Must not be used for solvent cementing
- DVGW approved
- DW 5290 BR 0464

Size	Code	Weight (kg)
1 liter	799 298 023	0.872



Marker

Type	Code	Weight (kg)
silver	799 350 364	0.010

Deburring tool

- Replacable blade



Code	SP	Weight (kg)
790 205 082	1	0.058

Measuring tape (circumference and diameter)



- Circumference: 2 m / 79 inch
- Diameter: 630 mm / 25 inch

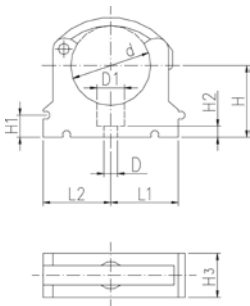
Code	SP	Weight (kg)
790 205 087	1	0.045

KLIP-IT pipe clip type 061 PP metric



Model:

- Material: clip and safety clip PP black, UV resistant
- d16 - d63: height designed for ball valve type 546 and 543
- **Minimum order quantity: standard packagings SP**



d (mm)	Code	SP	Weight (kg)
*	32	167 061 038	10 0.012
	40	167 061 039	10 0.027
	50	167 061 040	10 0.031
	63	167 061 041	10 0.052
	75	167 061 012	10 0.057
	90	167 061 013	10 0.092
	110	167 061 014	10 0.117
	140	167 061 016	10 0.224
	160	167 061 017	10 0.242

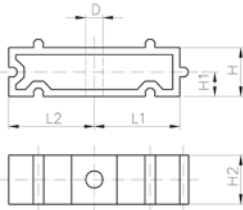
d (mm)	D (mm)	D1 (mm)	H (mm)	H1 (mm)	H2 (mm)	H3 (mm)	L1 (mm)	L2 (mm)	SC	closest inch (inch)	
*	32	6	11	36	10	6	16	24	27	M5	1
	40	7	14	44	10	7	22	34	34	M6	1 ¼
	50	7	14	51	10	7	22	37	37	M6	1 ½
	63	9	17	64	10	10	25	45	45	M8	2
	75	9	17	58	10	10	25	52	52	M8	2 ½
	90	9	17	65	10	10	28	65	65	M8	3
	110	9	17	75	10	10	28	79	79	M8	4
	140	9	17	110	10	10	32	98	98	M8	5
	160	9	17	108	10	10	32	109	109	M8	6



KLIP-IT spacer type 061 PP

Model:

- For pipe clips type 061/061H, PP black, UV resistant
- **Minimum order quantity: standard packaging SP**



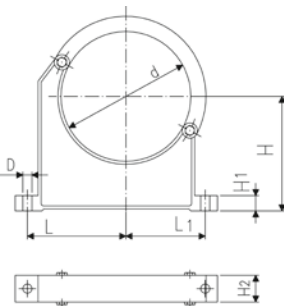
d	Inch	Code	SP	Weight	D	L1	L2	H	H1	H2	SC
(mm)	(inch)			(kg)	(mm)	(mm)	(mm)	(mm)	(mm)	(mm)	
32	1	167 061 158	10	0.006	6	24	27	20	10	16	M5
40	1 ¼	167 061 159	10	0.015	7	34	34	20	10	22	M6
50	1 ½	167 061 160	10	0.017	7	37	37	20	10	22	M6
63	2	167 061 161	10	0.020	9	45	45	20	10	25	M8
75	2 ½	167 061 162	10	0.027	9	52	52	20	10	25	M8
90	3	167 061 163	10	0.039	9	65	65	20	10	28	M8
110	4	167 061 164	10	0.048	9	79	79	20	10	28	M8
140	5	167 061 166	10	0.065	9	98	98	20	10	32	M8
160	6	167 061 167	10	0.071	9	109	109	20	10	32	M8



Pipe clip type 060 PP metric

Model:

- Material: clip and safety clip PP black, UV resistant
- **Minimum order quantity: standard packaging SP or gross packaging GP**
- Accidental opening of the safety clip is not possible
- Clip and safety clip are not assembled in the packaging.
- Pipes with flanges can be installed directly



d	Code	SP	Weight	D	L	L1	H	H1	H2	SC	closest inch
(mm)			(kg)	(mm)	(mm)	(mm)	(mm)	(mm)	(mm)		(inch)
90	167 060 038	10	0.144	9	89	71	105	15	33	M 8	3
110	167 060 039	10	0.158	9	94	80	115	15	33	M 8	4
125	167 060 040	10	0.249	11	116	91	130	20	35	M10	
140	167 060 041	10	0.260	11	121	99	130	20	35	M10	5
160	167 060 042	10	0.296	11	131	107	148	20	35	M10	6
180	167 060 043	10	0.327	11	143	115	163	20	35	M10	7
200	167 060 019	5	0.539	13	151	120	175	25	39	M12	8
225	167 060 020	5	0.612	13	164	132	175	25	39	M12	8
250	167 060 021	5	0.657	13	183	143	200	25	39	M12	9
280	167 060 022	5	0.722	13	197	156	200	25	39	M12	10
315	167 060 023	5	0.805	13	219	171	225	25	39	M12	12
355	167 060 024	5	1.251	17	275	209	258	30	50	M16	14
400	167 060 025	4	1.031	17	300	228	288	30	50	M16	16

COOL-FIT 4.0 Heat Tracing



Self regulating heating cable

Model:

- for pipe freeze protection
- cut to length on site
- suitable for in-pipe applications (inside the medium)
- zero maintenance after installation and commissioning
- no risk of overheating due to self-regulating technology
- Cables featuring self-regulating technology. The heat output automatically adjusts depending on the local temperature at every point along its length. It never overheats even when overlapping

L (m)	Code	Weight (kg)
200	790 738 001	14.400
62	790 738 003	4.460
40	790 738 005	2.280
20	790 738 007	1.440



Electronic Controller for pipe freeze protection

The controller is designed to provide userfriendly measurement and control for the self regulating heating cable for COOL-FIT. The Controller has a 25 A control relay and an SPDT alarm relay. Parameter and eventual alarm conditions are shown on the digital display and settings can be programmed easily even without power supply. The controller is supplied with an NTC temperature sensor for efficient media temperature sensing, and mountable DIN rail 35mm for easy mounting on walls.

Model:

- Easy set-up and programming of the unit
- Flexible temperature control of pipe freeze protection
- Media temperature sensing and/or ambient temperature sensing
- Proportional Ambient Sensing Control (PASC) algorithm for enhanced energy savings in ambient sensing mode
- Alarm relay with change over contact to signal power, temperature or communication problems
- Pipe temperature monitoring with high and low temperature alarm
- On wall mountable for outdoor location

Code
790 738 031



Cable gland

- For the leading the heating inside and outside the COOL-FIT 4.0 piping via threaded fitting

Model:

- Material: brass
- threaded connection: 3/4 " male thread R

R (inch)	Code	Weight (kg)
3/4	790 738 020	0.146



Cold lead connection and end seal kit

- For heating cables for COOL-FIT

Model:

- Heat-shrink technique

Inclusive:

- Crimps
- Cold lead shrinkable sleeves
- End seal shrinkable sleeves
- Mastic

Code Weight

(kg)

790 738 010 0.045

COOL-FIT 4.0 Tools



COOL-FIT 2.0/4.0 Foam removal and peeling tool

Model:

- Tool for foam removal and peeling of COOL-FIT 2.0 and 4.0 pipes

d (mm)	Code	Weight (kg)	SDR
32-90	799 738 001	10.500	SDR11
110-225	799 738 003	16.500	d110+d140 SDR11; d160+d225 SDR17
250-450	799 738 004	71.000	SDR17



COOL-FIT 2.0/4.0 Upgrade kit foam removal and peeling tool d140-d225

Model:

- Upgrade for COOL-FIT 2.0/4.0 foam removal and peeling tool d110-d225 (799738003)
- For easier foam removal and peeling of COOL-FIT 2.0 and 4.0 pipes in the dimensions d140-d225

Note:

Spindle and clamping shoes are to be used of COOL-FIT 2.0/4.0 foam removal and peeling tool 799738003, or 799738015 respectively.

d (mm)	Code	Weight (kg)
140-225	799 738 013	50.000



COOL-FIT 2.0/4.0 Foam removal and peeling tool SDR11

Model:

- Tool for foam removal and peeling of COOL-FIT 2.0 and 4.0 pipes

d (mm)	Code	Weight (kg)	SDR
110-225	799 738 015	16.500	SDR11
250-450	799 738 016	71.000	SDR11



COOL-FIT 4.0 Clamping shoe set d250-d450, SDR11

- Suitable for COOL-FIT 2.0/4.0 foam removal and peeling tool (799 738 004)
- Case incl. lid containing clamping shoes, blade holder and accessories

d (mm)	Code	Weight (kg)	SDR
250 - 450	799 738 161	60.000	SDR11

MSA 2.1 Automatic Electrofusion Unit with Bluetooth connectivity and protocols export



The MSA 2.1 automatic electro fusion unit combines light weight and high efficiency, thanks to its inverter technology and furthermore provides fusion documentation in PDF. The unit is extremely fast and simple, with three basic operations required to operator: connect, scan, start the fusion. It is robust, safe and ergonomic.

All is meant to simplify the job: the barcode scanner, for long distance reading, the cooling system to joint in series, the icon system, to keep the interaction between user and machine intuitive. The entire welding process is controlled and regulated with energy output compensation depending on ambient temperature and the indication of cooling time.

The internal Bluetooth Low Energy device offers the possibility to enter data, monitor the fusion from remote and collect the data recorded via wireless with consumer smartphones, to send them to the headquarter even in real time.

The unit can keep up to 1000 protocols permanently stored in the internal memory. The user can export the fusion reports to an USB stick to print them out in PDF format.

Scope of delivery includes: transport box, angle adapters (4.0 mm and 4.7 mm), operating instructions, START/STOP badge and USB memory stick with PC applications.

Technical Data:

- Operating temperature: -20°C to +50°C
- Mains voltage and frequency: 230V (190V - 265V), 50-60Hz
- Fusion voltage: 8-42 V (48 V)
- Fusion data input mode: bar code, manual
- Fusion current: 90 A (max)
- Suggested power generators: 3.5 kVA
- USB Port: Type A
- Protection factor: Class 1 / IP 65
- Mains cable: 4 m / Fusion cable: 4 m (8 m only for code 790156010)
- Weight: ca. 11.9 kg
- Display: Graphical LCD, adjustable contrast
- Independent from languages
- Bluetooth radio interface

Description	Code	Weight (kg)
Barcode scanner, transport case, mini Welding Book	790 156 003	11.900
Barcode scanner, transport case, mini Welding Book, Swiss plug	790 156 006	11.900
Barcode scanner, transport case, mini Welding Book, 8m fusion cable	790 156 010	12.900



Long adapters

- Adapters for Electrofusion units with 4 mm connectors.
- Longer version, suitable for all COOL-FIT 4.0 dimensions.

Description	Code	Weight (kg)
Angle adapters pair, black, 4.0mm	790 128 035	0.058



COOL-FIT 2.0/4.0 Installation tool weld-in port

Model:

- Tool for the installation of weld-in ports to COOL-FIT pipes
- Complete: toolcase equipped with all necessary tool components to install weld-in ports 1/2"-1" and d16-d50
- Basic: toolcase equipped with all necessary tool components to install weld-in ports 1/2"-1" and d16-d32 and the possibility to upgrade with d40+d50
- Upgrade kit: kit to upgrade basic tool to complete tool
- Version 230V with AC power plug CEE 7/4 (Schuko)
- Version 110V with AC power plug NEMA 5-15 grounded (Type B)

Note:

For pipes COOL-FIT 2.0, COOL-FIT 2.0F, COOL-FIT 4.0 and COOL-FIT 4.0F of the dimension d63-d225

Type A) Complete: toolcase equipped with all necessary tool components to install weld-in ports 1/2"-1" and d16-d50

Type B) Basic: toolcase equipped with all necessary tool components to install weld-in ports 1/2"-1" and d16-d32 and the possibility to upgrade with d40+d50

Type C) Upgrade kit: kit to upgrade basic tool to complete tool

Type	Voltage	Code	Weight (kg)
A	230 V	799 738 300	20.700
B	230 V	799 738 301	14.100
A	110 V	799 738 302	20.700
B	110 V	799 738 303	14.100
C		799 738 310	7.000



Clamping tool

Double, multi size with universal link

- Recommended for the installation of fittings ELGEF Plus and ecoFIT d40 - 200 and d160 - 630mm
- Recommended for the installation of fittings COOL-FIT d32/D75 - d140/D200 and d160/D250 - d450/D630
- The clamping allows installation without tension and avoids movement during fusion and cooling time
- The centrally located adjustable universal link allows installation of electrofusion couplers, elbows and reducers
- Works above, below and alongside the joint
- Adaptor for use with Tee-pieces available (see accessories)

d (mm)	d1 (mm)	Code	Weight (kg)
40	200	799 301 490	4.200
160	630	799 301 496	14.100

d (mm)	Description	Length (mm)	Width (mm)	Height (mm)
40	Scope of delivery: 2 x V-block, 2 x Straight bar, 1 x Universal link, Transport bag (600x380x250)	900	290	230
160	Scope of delivery: 2 x V-block, 2 x Straight bar, 1 x Universal link, Transport bag (780x780x580)	1300	670	550



Clamping tool Quadruple, multi size with universal link

- Recommended for the installation of fittings ELGEF Plus and ecoFIT d40 - 200 and d160 - 630mm
- Recommended for the installation of fittings COOL-FIT d32/D75 - d140/D200 and d160/D250 - d450/D630
- The clamping allows installation without tension and avoids movement during fusion and cooling time
- The centrally located adjustable universal link allows installation of electrofusion couplers, elbows and reducers
- Universal use; works above, below and alongside the joint
- Adaptor for use with Tee-pieces available (see accessories)

d (mm)	d1 (mm)	Code	Weight (kg)	Description	L (mm)	W (mm)	H (mm)
40	200	799 301 489	8.300	Scope of delivery: 4 x V-block, 2 x Straight bar, 1 x Universal link	900	290	230
160	630	799 301 495	23.300	Scope of delivery: 4 x V-block, 2 x Straight bar, 1 x Universal link	1300	670	550



Tee adaptor

- Suitable for clamping tool (799301495)

d (mm)	d1 (mm)	Code	Weight (kg)	Description	Length (mm)	Width (mm)	Height (mm)
40	200	799 301 491	0.610	Tee adaptor	600	50	40
160	630	799 301 497	3.500	Tee adaptor	1070	75	60



V-block

- Suitable for clamping tool (799301495)

d (mm)	d1 (mm)	Code	Weight (kg)	Description	Length (mm)	Width (mm)	Height (mm)
40	200	799 301 492	1.000	V-block complete	290	230	65
160	630	799 301 498	3.200	V-block complete	660	430	90



Bar extension

- Suitable for clamping tool (799301495)

d (mm)	d1 (mm)	Code	Weight (kg)	Description	L (mm)	W (mm)	H (mm)
160	630	799 301 499	1.000	Bar extension	1000	40	40

COOL-FIT 4.0 Spare Parts



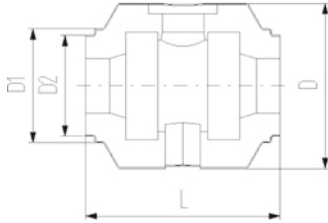
COOL-FIT 2.0/4.0 Insulation for ball valve type 546 / 542

Model:

- Set consisting of half shells and clamps

Note:

Suitable for COOL-FIT ball valve only



d (mm)	D (mm)	DN (mm)	Code	Weight (kg)	D1 (mm)	D2 (mm)	L (mm)
32	135	25	738 990 308	0.160	97	82	152
40	157	32	738 990 309	0.228	117	97	170
50	169	40	738 990 310	0.282	117	97	184
63	204	50	738 990 311	0.498	132	117	227
75	235	65	738 990 312	0.935	147	132	276
90	255	80	738 990 313	1.033	168	147	297



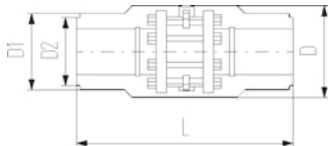
COOL-FIT 2.0/4.0 Insulation for Butterfly Valve Type 567

Model:

- Set consisting of half shells and clamps

Note:

Suitable for COOL-FIT butterfly valve only



d (mm)	D (mm)	DN (mm)	Code	Weight (kg)	D1 (mm)	D2 (mm)	L (mm)
110	310	100	738 990 324	2.054	188	168	556
140	287	125	738 990 326	2.947	233	208	662
160	358	150	738 990 327	3.675	259		720
225	409	200	738 990 330	4.811	325		776



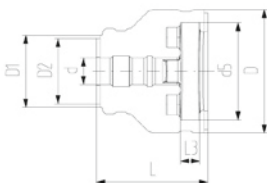
COOL-FIT 2.0/4.0 Insulation for flange adaptor

Model:

- Set consisting of half shells and clamps

Note:

Suitable for COOL-FIT flange adaptor only



d (mm)	D (mm)	DN (mm)	Code	Weight (kg)	D1 (mm)	D2 (mm)	L (mm)	L3 (mm)	d5 (mm)
32	135	25	738 990 458	0.230	90	75	162	26	121
40	170	32	738 990 459	0.340	110	90	165	28	146
50	180	40	738 990 460	0.400	110	90	178	30	156
63	200	50	738 990 461	0.560	125	110	230	32	171
75	220	65	738 990 462	0.650	140	125	232	34	191
90	240	80	738 990 463	0.830	160	140	245	35	206
110	270	100	738 990 464	1.100	180	160	254	36	235
140	300	125	738 990 466	1.140	225	200	299	38	256
160	358	150	738 990 467	1.560	259		332	34	295
225	423	200	738 990 470	2.800	325		383	37	354



COOL-FIT 4.0 Insulation for adaptor fittings PE-metal thread

Model:

- Set consisting of half shells and clamps
- Type A: Female thread RP, NPT, loose nut G
- Type B: Male thread R, NPT
- Type C: Both female and male thread

d (mm)	Code	Weight (kg)	Type
32	738 990 408	0.064	A
32	738 990 418	0.045	B
40	738 990 409	0.083	C
50	738 990 410	0.093	C
63	738 990 411	0.111	C



COOL-FIT 4.0 Insulation for adaptor union PE-PE

Model:

- Set consisting of half shells and clamps

d (mm)	Code	Weight (kg)
32	738 990 428	0.106
40	738 990 429	0.166
50	738 990 430	0.188
63	738 990 431	0.109



COOL-FIT 4.0 Insulation for adaptor union PE-ABS

Model:

- Set consisting of half shells and clamps

d (mm)	Code	Weight (kg)
32	738 990 438	0.088
40	738 990 439	0.107
50	738 990 440	0.126
63	738 990 441	0.178
75	738 990 442	0.374
90	738 990 443	0.493
110	738 990 444	0.597



COOL-FIT 4.0 Insulation for welding indicator-kit

Model:

- Type A suitable for COOL-FIT 4.0 Fittings d32-d110
- Type B suitable for COOL-FIT 4.0 Fittings d160 and coupler d225
- Type C suitable for COOL-FIT 4.0 Fittings d225 except coupler

d (mm)	Code	Weight (kg)	Type	pieces/kit
32 - 110	738 010 052	0.090	A	20
140 - 225	738 010 053	0.200	B	10
225	738 010 054	0.033	C	10



Peeling blade d32-d90

- Suitable for COOL-FIT 2.0/4.0 foam removal and peeling tool (799 738 001)

d (mm)	Code	Weight (kg)
32	799 738 101	0.015
40	799 738 102	0.020
50	799 738 103	0.019
63	799 738 104	0.020
75	799 738 105	0.020
90	799 738 106	0.030



Peeling blade d110-d225

- Suitable for COOL-FIT 2.0/4.0 foam removal and peeling tool (799 738 003)

d (mm)	Code	Weight (kg)
110	799 738 107	0.100
140	799 738 108	0.100
160	799 738 109	0.100
225	799 738 110	0.100



Replacement blade foam separator

- Suitable for COOL-FIT 2.0/4.0 foam removal and peeling tool (799 738 004) and upgrade kit d140-d225 (799 738 013)

Code	Weight (kg)	Suitable for
799 738 115	0.100	799 738 004
799 738 117	0.080	799 738 013



O-Ring for clamping shoe

- Suitable for COOL-FIT 2.0/4.0 foam removal and peeling tool (799 738 001 and 799 738 003)

d (mm)	Code	Weight (kg)
32	799 738 050	0.003
110	799 738 051	0.010



Clamping shoe d32-d90

- Suitable for COOL-FIT 2.0/4.0 foam removal and peeling tool (799 738 001)

d (mm)	Code	Weight (kg)	Colour
32	799 738 020	0.240	silver
40	799 738 021	0.090	red
50	799 738 022	0.210	anthracite
63	799 738 023	0.120	gold
75	799 738 024	0.270	blue
90	799 738 025	0.480	black



Clamping shoe d110-d225

- Suitable for COOL-FIT 2.0/4.0 foam removal and peeling tool (799 738 003)
- Suitable for COOL-FIT 2.0/4.0 foam removal and peeling tool (799 738 015)
- Type A: Spindle start
- Type B: With pipe stop
- Delivery unit: 1 piece (3 pieces are required for complete circumference)

d (mm)	Type	Code	Weight (kg)	Colour	SDR
110		799 738 026	0.680	silver	SDR11
140	A	799 738 027	0.480	red	SDR11
140	B	799 738 037	0.480	red	SDR11
160	A	799 738 028	0.580	anthracite	SDR17
160	B	799 738 038	0.580	anthracite	SDR17
160	A	799 738 121	0.580	anthracite	SDR11
160	B	799 738 122	0.580	anthracite	SDR11
225	A	799 738 029	0.600	gold	SDR17
225	B	799 738 039	0.600	gold	SDR17
225	A	799 738 123	0.600	gold	SDR11
225	B	799 738 124	0.600	gold	SDR11



Clamping shoe d250-d450, SDR17

- Suitable for COOL-FIT 2.0/4.0 foam removal and peeling tool (799 738 004)
- Type A: Spindle start
- Type B: With pipe stop

d (mm)	Code	Weight (kg)	Colour	Type
250	799 738 042	0.240	silver	A
250	799 738 052	0.240	silver	B
280	799 738 043	0.265	red	A
280	799 738 053	0.315	red	B
315	799 738 044	0.300	anthracite	A
315	799 738 054	0.350	anthracite	B
355	799 738 045	0.370	gold	A
355	799 738 055	0.430	gold	B
400	799 738 046	0.450	blue	A
400	799 738 056	0.520	blue	B
450	799 738 047	0.550	black	A
450	799 738 057	0.600	black	B



Clamping shoe d250-d450, SDR11

- Suitable for COOL-FIT 2.0/4.0 foam removal and peeling tool (799 738 016)
- Type A: Spindle start
- Type B: With pipe stop

d (mm)	Code	Weight (kg)	Colour	Type
250	799 738 125	0.240	silver	A
250	799 738 126	0.240	silver	B
280	799 738 127	0.315	red	A
280	799 738 128	0.315	red	B
315	799 738 129	0.300	anthracite	A
315	799 738 130	0.350	anthracite	B
355	799 738 131	0.370	gold	A
355	799 738 132	0.430	gold	B

d (mm)	Code	Weight (kg)	Colour	Type
400	799 738 133	0.450	blue	A
400	799 738 134	0.520	blue	B
450	799 738 135	0.550	black	A
450	799 738 136	0.600	black	B

Circular blade



- Suitable for COOL-FIT 2.0/4.0 foam removal and peeling tool (799 738 001 and 799 738 003)

Code	Weight (kg)
799 738 040	0.008

Circular blade-Set



- Suitable for COOL-FIT 2.0/4.0 foam removal and peeling tool (799738001 and 799738003)
- Consists of: Circular blade, holder and screw

d (mm)	Code	Weight (kg)
32 - 90	799 738 048	0.025
110 - 225	799 738 049	0.025

Saw blade rotary saw



- Suitable for COOL-FIT 2.0/4.0 foam removal and peeling tool (799 738 004)

Code	Weight (kg)
799 738 114	0.010

Saw



- Suitable for COOL-FIT 2.0/4.0 foam removal and peeling tool (799 738 003)

d (mm)	Code	Weight (kg)
140 - 225	799 738 060	1.000

Saw blade



- Suitable for COOL-FIT 2.0/4.0 foam removal and peeling tool (799 738 003)

d (mm)	Code	Weight (kg)
140 - 225	799 738 061	0.029



Locking pin

- Suitable for COOL-FIT 2.0/4.0 foam removal and peeling tool (799 738 004)

Code	Weight (kg)
799 738 116	0.250



Spare blades for deburring tool

- 10 pieces

Code	SP	Weight (kg)
790 205 083	1	0.031

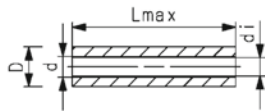
COOL-FIT 4.0 Push System Pipes and Fittings



COOL-FIT 4.0 Push System, Pipe bar

Model:

- Pre-insulated multilayer (PE-RT/AL/PE-RT) pipe, metric
- Closed cell insulation based EPDM with polyester wire mesh for mechanical protection
- Colour: black



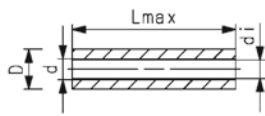
d	D	DN	PN	Code	Weight	di	L	closest inch
(mm)	(mm)	(mm)	(bar)		(kg)	(mm)	(mm)	(inch)
25	78	20	16	738 173 007	0.888	20	5000	¾
32	85	25	16	738 173 008	1.037	26	5000	1



COOL-FIT 4.0 Push System, Pipe coiled

Model:

- Pre-insulated multilayer (PE-RT/AL/PE-RT) pipe, metric
- Closed cell insulation based EPDM with polyester wire mesh for mechanical protection
- Colour: black



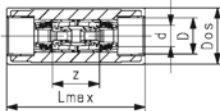
d	D	DN	PN	Code	Weight	di	L	closest inch
(mm)	(mm)	(mm)	(bar)		(kg)	(mm)	(mm)	(inch)
25	78	20	16	738 173 057	0.893	20	25000	¾



COOL-FIT 4.0 Push System, Coupler

Model:

- Push fitting made of high-performance plastic PPSU
- Custom fit insulation shell of XPE with TPE jacket
- Colour: black
- Package contents: 1x module, 2x adaptors, 2x compression rings and insulation half shells



d	D	DN	PN	Code	Weight	Dos	Lmax	z
(mm)	(mm)	(mm)	(bar)		(kg)	(mm)	(mm)	(mm)
25	78	20	16	738 913 007	0.533	100	212	72
32	85	25	16	738 913 008	0.483	100	212	72

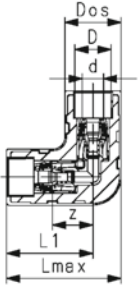


COO-FIT 4.0 Push System, Elbow 90°

Model:

- Push fitting made of high-performance plastic PPSU
- Insulation shell of XPE with TPE jacket
- Colour: black
- Package contents: 1x module, 2x adaptors, 2x compression rings and insulation half shells

d	D	DN	PN	Code	Weight	Dos	Lmax	L1	z
(mm)	(mm)	(mm)	(bar)		(kg)	(mm)	(mm)	(mm)	(mm)
25	78	20	16	738 103 007	0.577	100	182	132	62
32	85	25	16	738 103 008	0.551	100	182	132	62



COOL-FIT 4.0 Push System, T90° equal

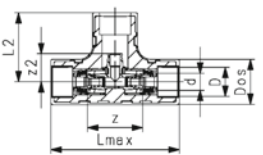
Model:

- Push fitting made of high-performance plastic PPSU
- Insulation shell of XPE with TPE jacket
- Colour: black
- Package contents: 1x module, 2x adaptors, 2x compression rings and insulation half shells

Note:

Additional COOL-FIT 4.0 Push System, Adaptor kit 738903057 or 738903058 needed

d	D	DN	PN	Code	Weight	Dos	Lmax	L2	z	z2
(mm)	(mm)	(mm)	(bar)		(kg)	(mm)	(mm)	(mm)	(mm)	(mm)
25/25-32/25	78	20	16	738 203 007	0.702	100	246	132	106	54
32/25-32/32	85	25	16	738 203 008	0.676	100	246	132	106	54



COOL-FIT 4.0 Push System Valves

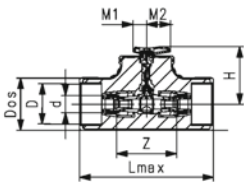


COOL-FIT 4.0 Push System, Ball valve

Model:

- Ball valve with spindle extension
- Insulation shell of XPE with TPE jacket
- Colour: black
- Package contents: 1x ball valve, 2x adaptor, 2x compression ring and insulation half shells

d (mm)	D (mm)	DN (mm)	PN (bar)	kv-value ($\Delta p=1$ bar) (l/min)	Code	Weight (kg)	Dos (mm)	H (mm)	Lmax (mm)	M1 (mm)	M2 (mm)	z (mm)
25	78	20	16	29.5	138 983 007	1.094	100	111	246	26	41	116
32	85	25	16	29.5	138 983 008	1.068	100	111	246	26	41	116



COOL-FIT 4.0 Push System, Flow control valve Both sides connection with iFIT

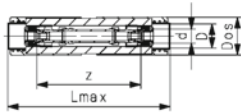
Model:

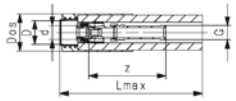
- Flow control valve made of brass, impact resistant plastic and EPDM seals
- Insulation made of NBR and shells of TPE
- Both sides connection to COOL-FIT 4.0 Push System
- Measuring range: 8.0 – 30.0 (l/min)
- Measuring accuracy: $\pm 10\%$ of the displayed value
- Package contents: 1x valve, 2x adaptors, 2x compression rings, 1x insulation shell

Note:

The use of antifreeze agents changes the viscosity and density of the medium. Depending on the proportion added, the actual flow rate therefore deviates from the displayed flow rate. Please contact GF for further information

d (mm)	D (mm)	DN (mm)	PN (bar)	kv-value ($\Delta p=1$ bar) (l/min)	Code	Weight (kg)	Dos (mm)	Lmax (mm)	z (mm)
25	78	20	10	83.3	138 983 027	1.346	100	374	239
32	85	25	10	83.3	138 983 028	1.328	100	374	239





COOL-FIT 4.0 Push System, Flow control valve
One free end with iFIT

Model:

- Flow control valve made of brass, impact resistant plastic and EPDM seals
- Insulation made of NBR and shells of TPE
- One side connection to COOL-FIT 4.0 Push System
- One side connection with thread
- Measuring range: 8.0 – 30.0 (l/min)
- Measuring accuracy: $\pm 10\%$ of the displayed value
- Package contents: 1x valve, 1x adaptor, 1x compression ring, 1x insulation shell

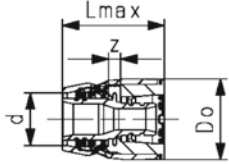
Note:

The use of antifreeze agents changes the viscosity and density of the medium. Depending on the proportion added, the actual flow rate therefore deviates from the displayed flow rate. Please contact GF for further information

d (mm)	D (mm)	Thread	Type	Size (inch)	DN (mm)	PN (bar)	kv-value ($\Delta p=1$ bar) (l/min)	Code	Weight (kg)
25	78	G		1	20	10	83.3	138 983 017	0.865
32	85	G		1	25	10	83.3	138 983 018	0.852

d (mm)	D (mm)	Dos (mm)	Lmax (mm)	z (mm)
25	78	100	332	180
32	85	100	332	180

COOL-FIT 4.0 Push System Accessories



COOL-FIT 4.0 Push System, Adaptor kit

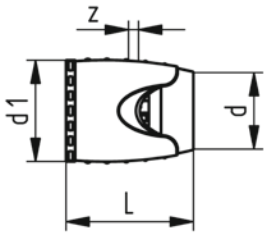
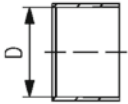
Model:

- Adapter made of high-performance plastic PPSU
- Compression ring made of PP-H
- Package contents: 1x adaptor, 1x compression ring

Note:

Additionally needed for COOL-FIT 4.0 Push System, T 90° equal

d (mm)	D (mm)	DN (mm)	PN (bar)	Code	Weight (kg)	Do (mm)	Lmax (mm)	z (mm)
25	78	20	16	738 903 057	0.119	44	62	7.5
32	85	25	16	738 903 058	0.106	50	63	7.5



iFIT Adaptor PPSU

- Material: PPSU, PA

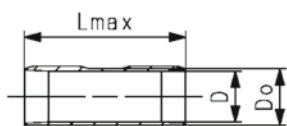
d (mm)	d1 (mm)	Code	SP	Weight (kg)	L (mm)	z (mm)
25	45	762 101 034	5	0.070	62	8
32	52	762 101 035	5	0.085	63	8



COOL-FIT 4.0 Push System, Pipe shell

Model:

- Shell for easy installation in standard pipe clips

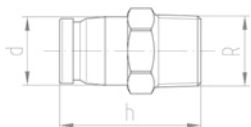


d (mm)	D (mm)	Do (mm)	Code	Weight (kg)	Lmax (mm)
25	78	86	738 013 007	0.133	200
32	85	93	738 013 008	0.144	200



iFIT Transition module brass With male thread

- Material: brass, dezincification resistant
- Connection: male thread
- *as long as stock last

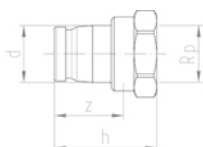


	d (mm)	Thread Type	Size (inch)	Code	SP	Weight (kg)	h (mm)
*	25 - 32	R	¾	762 101 277	2	0.135	51
*	25 - 32	R	1	762 101 278	2	0.175	55

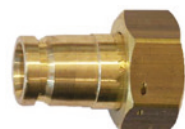


iFIT Transition module brass With female thread

- Material: brass, dezincification resistant
- Connection: female thread
- *as long as stock last

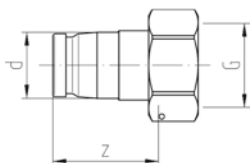


	d (mm)	Thread Type	Size (inch)	Code	SP	Weight (kg)	h (mm)	z (mm)
*	25 - 32	Rp	¾	762 101 279	2	0.127	45	31
*	25 - 32	Rp	1	762 101 280	2	0.175	49	32



iFIT Transition union module brass With flat sealed

- Material: brass, dezincification resistant
- Supplied with: sealing



	d (mm)	Thread Type	Size (inch)	Code	SP	Weight (kg)	z (mm)
	25 - 32	G	¾	762 101 281	2	0.155	48
	25 - 32	G	1	762 101 282	1	0.179	55
	25 - 32	G	1 ¼	762 101 283	1	0.251	48
	25 - 32	G	1 ½	762 101 284	1	0.357	50

COOL-FIT 4.0 Push System Tools



iFIT Tool set for ML- and PB pipes plastic

d16 / d20 with pipe scissor, d25 / d32 with pipe cutter

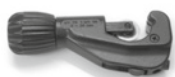
d (mm)	Code	SP	Weight (kg)
25 / 32	762 101 133	1	1.371



iFIT Chamfering tool for ML- and PB pipes

- Material: steel, plastic

d (mm)	Code	SP	Weight (kg)
25	762 101 125	1	0.252
32	762 101 132	1	0.323



iFIT plastic pipe cutter For ML- and PB pipes d16-d32

d (mm)	Code	SP	Weight (kg)
16 - 32	762 101 117	1	0.386
Spare blades	762 101 118	1	0.005



iFIT Chamfering tool to battery tools metal

d (mm)	Code	SP	Weight (kg)
25	762 101 353	1	0.252
32	762 101 354	1	0.323



iFIT Grab rail set metal

d (mm)	Code	SP	Weight (kg)
16 - 32	762 101 361	1	0.050

Local support around the world

Visit our webpage to get in touch with your local specialist:

www.gfps.com/our-locations



The information and technical data (altogether "Data") herein are not binding, unless explicitly confirmed in writing.
The Data neither constitutes any expressed, implied or warranted characteristics, nor guaranteed properties or a guaranteed durability. All Data is subject to modification. The General Terms and Conditions of Sale of Georg Fischer Piping Systems apply.