

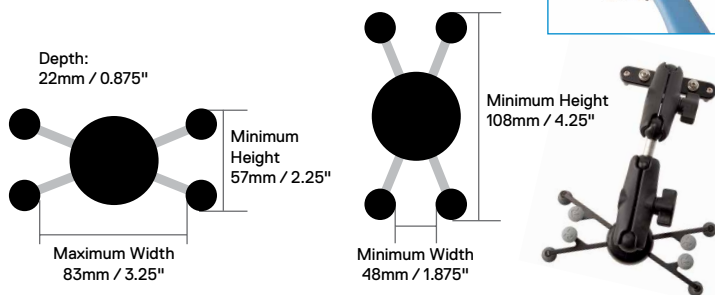
# Accessories for all Radiodetection's Precision Locators and Tx Transmitters

## Locator Accessories

### Phone Holder

Arm and bracket system, quickly/easily attached and removed from any precision locator, that conveniently positions an Android device, giving the operator immediate feedback without impacting the locate operation.

**Part No: 10/RX-PHONE-HOLD-KIT**



### 7"- 8" Tablet Holder

**Part No: 10/RX-TABLET-7-8-HOLD-KIT**

### Locator Clamp

Used with a locator, often in congested areas, to identify individual utilities. Available in 2" (50mm), 4" (100mm), 5" (130mm).

**Part No: 10/RX-CLAMP-XX (XX= 2, 50, 4, 100, 5, 130)**



### Locator CD/CM Clamp

The Current Direction / Current Measurement clamp is used to positively identify one target line amongst a number of parallel utilities and to measure the Transmitter signal current flowing along the utility.

**Part No: 10/RX-CD-CLAMP**



### High Gain Stethoscope

Used to locate individual utilities when either bundled together or in close proximity and where it is not possible to use a locator. Its small size and flat surface make it ideal for locating utilities within walls.

**Part No: 10/RX-STETHOSCOPE-HG**



### Small Stethoscope

This helps to locate individual utilities which are bundled together. It can be used for identifying inaccessible small cables as well as other utilities.

**Part No: 10/RX-STETHOSCOPE-S**



### Large Stethoscope

Flexible, 20" (50cm), accessory used to locate and identify accessible utilities and particularly useful in congested areas or when cables are in close proximity to each other.

**Part No: 10/RX-STETHOSCOPE-L**



## Current Direction (CD) Telescopic Stethoscope

This is utilized with a locator having CD to find and identify individual cables, using the CD signal from a Tx-10(B) transmitter. LEDs and direction arrows provide current direction. Other locators without CD can be used to detect and identify cables but without the current direction information.

**Part No: 10/RX-CD-STETHOSCOPE**



### A-Frame

This is used for locating sheath faults on cables and coating defects on pipelines. It provides direction and magnitude of fault information on the display of the locator. The A-Frame requires both the locator and transmitter to have the Fault Find feature.

**Part No: 10/RX-AFRAME**

Also available with a customized bag.

**Part No: 10/RX-AFRAME-BAG**

## Submersible Double Depth Antenna (SDDA)

This is used for locating underwater cables or pipes. It is supplied with 33' or 164' (10m or 50m) of cable but may be ordered in lengths up to 328' (100m) on request. It is available in 512/640Hz or 8kHz versions. Additional Submersible cable available on request.

640/512Hz or 8kHz Submersible DD Antenna (10m cable).

**Part No: 10/RX-SUBANTENNA-XX (XX= 512, 640 or 8K)**

Additional Submersible Cable Length (per metre)

**Part No: 10/RX-SUBANTENNA-CABLE**



## Headphones

These can be used with a locator and are recommended for use in noisy environments.

**Part No: 10/RX-HEADPHONES**



## Transmitter Accessories

### Live Plug Connector (LPC)

This accessory is used to easily apply a transmitter signal to a street distribution cable using a standard mains socket. It is available with a UK, US or EU style mains plug. Qualified for use to CAT III 600V, CAT IV 300V.

**Part No: 10/TX-LPC-XX (XX= EU, UK, US)**



### Live Cable Connector (LCC)

The Live Cable Connector, which may only be used by suitably qualified personnel, is used to apply a transmitter signal to live cables. Qualified for use to CAT III 600V, CAT IV 300V.

**Part No: 10/TX-LCC**



### Transmitter Clamp

This clamp is used to apply a transmitter signal to a specific cable or pipe. This is particularly useful where direct connection is not possible, or on live cables that cannot be de-energized. It can be used with the extension rod.

Available in 2" (50mm), 4" (100mm), 5" (130mm) and 8.5" (215mm) diameters.

Part No: 10/TX-CLAMP-XX (XX= 2, 50, 4, 100, 5, 130, 8.5, 215)



### Transmitter CD Clamp

This clamp is used to apply a CD or low frequency signal from a transmitter to a cable or pipe. The CD signal is useful for identifying individual utilities in congested areas. This clamp can be used with frequencies below 1kHz.

Part No: 10/TX-CD-CLAMP



### Signal Clamp Extension Rod

The 25" (630mm), non-conductive, nylon extension rod is used to extend the reach of the locator/transmitter clamp or small stethoscope. Multiple rods can be connected together to extend the reach.

Part No: 10/TX-CLAMP-EXTROD



### Direct Connection Lead

Used to apply the transmitter signal directly to utilities.

Part No: 10/TX-DC-LEAD



### Direct Connection Lead with Insulated Plug/Socket

Direct Connection leads, with removable/replaceable crocodile clips, with 4mm banana plugs for applying the transmitter signal directly to utilities.

Part No: 10/TX-DC-LEAD-BAN



### Direct Connection Lead with Telecom Crocodile Clip

Direct Connection leads, with crocodile clip for applying the transmitter signal directly to Telecom cables eg Twisted Pair.

Part No: 10/TX-DC-LEAD-TELE



### Spiral Earth Stake

Used to provide a good connection to earth for the locate signal return path.

Part No: 10/TX-EARTHSTAKE



### Earth Reel

Extends the length of the Direct Connection black lead if required.

Part No: 10/TX-EARTHLEAD



### Neodymium Magnet

This high strength magnet can be attached to metallic pipes, street furniture, etc., to provide a convenient connection point for the direct connect lead signal connector.

Part No: 10/TX-MAGNET



### Transmitter Connection Kit

Contains the most common connection accessories, including Direct Connection lead, Earth Reel, Earth Stake and High-strength neodymium magnet.

Part No: 10/TX-CONNECTION-KIT



### Tx-121 Isolation Transformer

This is used with the Tx range of transmitters to apply a low frequency signal across shorted phases on LV cables to enable location of phase to phase faults. (Rated for connection to CAT IV mains circuits up to 230V phase-to-neutral. Maximum phase to phase voltage differential: 3V RMS at 50/60Hz).

Part No: 10/TX121-XX (XX = DE, EN, FR, NL)



### Accessories for tracing or locating non-conductive utilities

#### S6 Microsonde Kit 33kHz

Locatable to 6.5' (2m) and measuring 0.25 x 3.5" (6.4 x 88mm). Supplied as a kit that includes sonde, flexible adaptor, 2 batteries and case.

Part No: 10/SONDE-MICRO-33



Pack of 10 x batteries for S6 Microsonde.

Part No: 10/SONDE-MICRO-BATPACK

#### S9 Minisonde 33kHz

Locatable to 13' (4m) and measuring 0.35 x 5.4" (9 x 138mm). Supplied as a kit that includes sonde, 2 batteries and case.

Part No: 10/SONDE-MINI-33



Pack of 10 x batteries for S9 Minisonde.

Part No: 10/SONDE-MINI-BATPACK

#### S13 Sonde Kit 33kHz

Locatable to 8.2' (2.5m) and measuring 0.5 x 2.7" (12.7 x 68mm) with plain end cap. Supplied as a kit that includes two end caps, two batteries and case.

Part No: 10/SONDE-S13-33



Pack of ten spare batteries for S13 Sonde.

Part No: 10/SONDE-S13-BATPACK

#### S18 Sonde 33kHz

Locatable to 14.5' (4.5m) and measuring 0.70" (18 mm) wide. S18 Sonde is 3.2" (82mm) long.

Part No: 10/SONDE-S18A-33



#### Bendi Sonde 512Hz

A 3-section sonde, locatable to 19' (6m) and measuring 0.9 x 18.8" (23 x 478mm), for improved flexibility around pipe and duct corners. Supplied with M10 male end cap.

Part No: 10/SONDE-BENDI-512



#### Standard Sonde

Locatable to 16' (5m) and measuring 1.53 x 4.13" (39 x 105mm). Available in 3 frequencies: 512Hz, 8kHz and 33kHz.

Part No: 10/SONDE-STD-XX (XX= 512, 8, 33)



#### Sewer Sonde 33kHz

Locatable to 26' (8m) and measuring 2.51 x 6.61" (64 x 168mm).

Part No: 10/SONDE-SEWER-33



#### Sonde Shell

External Shell for heavy-duty applications (dia. as Sewer Sonde).

Part No: 10/SONDE-SEWER-SHELL

#### Super Sonde 33kHz

Locatable to 49' (15m) and measuring 2.51 x 12.51"

(64 x 318mm). Part No: 10/SONDE-SUPER-33



## Range of Sonde Accessories

Radiodetection has a wide range of accessories including connectors with various size fittings. Please see the Sonde User Guide for more information.

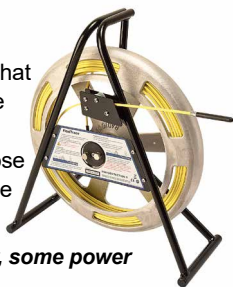
### Flexitrace, Tx-Energized Pushrod

164' (50m) or 260' (80m) small diameter rods that can be inserted into small plastic pipes to trace the route or locate blockages. Energized by a Radiodetection transmitter\*, the user can choose to have either the complete rod length locatable or just the end tip.

\*When using a Tx-5(B) or Tx-10(B) transmitter, some power restrictions apply. Please enquire for details.

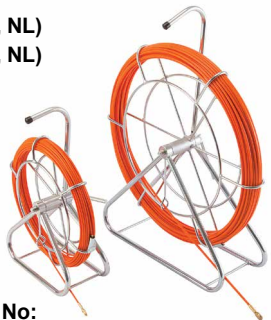
Part No: 10/TRACE50-XX (XX = D, F, GB, NL)

Part No: 10/TRACE80-XX (XX = D, F, GB, NL)



### Flexrod

A flexible fiberglass rod used for propelling Radiodetection sondes through pipes to trace the path and locate blockages.



Length		Diameter		Part No:
m	ft	mm	in	
50	160	4.5	3/16	10/FLEXRODF50-4.5
80	260	4.5	3/16	10/FLEXRODF80-4.5
50	160	7	1/4	10/FLEXRODF50-7
100	320	7	1/4	10/FLEXRODF100-7
150	485	7	1/4	10/FLEXRODF150-7
60	195	9	3/8	10/FLEXRODF60-9
120	390	9	3/8	10/FLEXRODF120-9

### RF Marker Balls

A selection of Marker Balls for Marker Locators (box of 30).



	Part No:
<b>Red:</b> Electrical Power – 169.8kHz	61/OMPPOWER-MK2
<b>Blue:</b> Water – 145.7kHz	61/OMWATER-MK2
<b>Green:</b> Sanitary – 121.6kHz	61/OMSANITARY-MK2
<b>Orange:</b> Telephone/Telecoms – 101.4kHz	61/OMTEL-MK2
<b>Yellow:</b> Gas – 83.0kHz	61/OMGAS-MK2
<b>Black/Orange:</b> Cable TV – 77.0kHz	61/OMCABLE-MK2
<b>Purple:</b>	
General/Non-potable Water – 66.35kHz	61/OMGENERAL-MK2
<b>Blue/Red:</b> Europower – 134.0kHz	61/OMEUROPOWER-MK2

## Power Options

### Locator Power Accessories and Spares

#### Rechargeable Battery Packs

Cost effective alternatives to alkaline batteries, offering superior battery life, particularly in colder climates.

#### Li-Ion Rechargeable Battery Pack<sup>1,2</sup>

Contains Lithium Ion rechargeable battery.

Part No: 10/RX-BATPACK-V2



#### Li-Ion Mains Charger

Charges a Li-Ion battery pack from a mains supply (90-240Vac).

CN, EU, UK, AU and US and options are available.

Part No: 10/RX-MCHARGER-V2-XX (XX = CN, EU, UK, AU, US)



#### Li-Ion Automotive Charger

Charges a Li-Ion battery pack from a 12V automotive socket.

Part No: 10/RX-ACHARGER-V2



### Li-Ion Rechargeable Battery Mains Kit

Contains Li-Ion rechargeable battery and mains charger (90-240Vac).

Part No: 10/RX-MBATPACK-V2-XX (XX = CN, EU, UK, AU, US)

### Li-Ion Rechargeable Battery Pack with Automotive Charger

Part No: 10/RX-ABATPACK-V2

### Li-Ion Rechargeable Battery Pack with Mains and Automotive Charger (includes power lead)

Part No: 10/RX-MABATPACK-V2-XX (XX = CN, EU, UK, AU, US)

### NiMH Rechargeable Battery Pack<sup>1,3</sup>

Contains Nickel Metal Hydride rechargeable battery.

Part No: 10/RX-BATPACK-NIMH



#### NiMH Mains Charger

Charges a NiMH battery pack from a mains supply (90-240Vac).

Part No: 10/RX-MCHARGER-NIMH-XX (XX = CN, EU, UK, AU, US)



#### NiMH Automotive Charger

Charges a NiMH battery pack from a 12V automotive socket.

Part No: 10/RX-ACHARGER-NIMH



### NiMH Rechargeable Battery Mains Kit

Contains NiMH rechargeable battery and mains charger with mains lead (90-240Vac).

10/RX-MBATPACK-NIMH-K-XX (XX = CN, EU, UK, AU, US)

### NiMH Rechargeable Battery Kit and Chargers

Contains NiMH rechargeable battery and both mains with mains lead (90-240Vac) and automotive 12V chargers.

Part No: 10/RX-RECHARGEKITALL-XX (XX = CN, EU, UK, AU, US)

### Alkaline Battery Trays

Replacement battery trays for Radiodetection's Precision Locators.

#### 2-Cell Battery Tray<sup>1,3</sup>

Holds 2x D Cell / LR20.

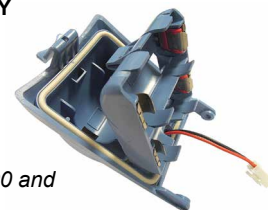
Part No: 10/RX-2DCELL-TRAY



#### 3-Cell Battery Tray<sup>2</sup>

Holds 3x D Cell / LR20.

Part No: 10/RX-3DCELL-TRAY



1. Compatible with RD8200, RD7200, RD8100 and RD7100 Cable and Pipe Locators.
2. Compatible with RD8100, RD7100, RD8000 and RD7000 RF Marker Locators.
3. Compatible with RD8000 and RD7000+ Cable and Pipe Locators.

## Transmitter Power Accessories and Spares

### Lithium-Ion Battery Packs

A rechargeable battery pack is a cost effective alternative to using alkaline batteries and offers superior battery life, particularly in colder climates.

### Transmitter Rechargeable Battery Pack

This is a spare transmitter rechargeable battery pack.

Part No: 10/TX-MBATPACK-V2





### Mains Charger for the Transmitter Li-Ion Rechargeable Battery

This convenient unit charges a transmitter rechargeable battery pack from the mains (90-240Vac).

CN, EU, UK, AU and US and options are available.

Part No: 10/TX-MBATPACK-V2-XX (XX = CN, EU, UK, AU, US)

### Automotive Charger for the Transmitter Li-Ion Rechargeable Battery

This convenient 12V unit is used to charge a transmitter rechargeable battery pack from an automotive cigarette lighter socket.

Part No: 10/TX-ABATPACK-V2



### Li-Ion Rechargeable Battery Mains Kit

This kit includes a transmitter rechargeable battery pack and a universal mains charger.

CN, EU, UK, AU and US and options are available.

Part No: 10/TX-MABATPACK-V2-XX (XX = CN, EU, UK, AU, US)

Note that Li-Ion rechargeable packs cannot be charged in the transmitter.



### Mains Power Supply Unit

This convenient alternative to batteries powers the transmitter directly from the mains.

CN, EU, UK, AU and US and options are available.

Part No: 10/TX-MPSU-XX (XX = CN, EU, UK, AU, US)



### Automotive Power Supply Unit

This kit contains a 12V Car Power Lead with Isolation Transformer for convenience and safety.

Part No: 10/TX-APSU



### D Cell Batteries

Alkaline Battery (D-Cell).

Part No: 10/1DCELL-ALK



Set of two rechargeable NiMH batteries (D-Cell 5000mAh).

Part No: 10/2DCELL-R-NIMH

Universal charger with UK plug (AAA to D-cell).

Part No: 26/UNICHARGER



### Transport and Storage Accessories

A range of carrying cases for combined locator and transmitter.

#### Soft Carry Bag

Universal soft bag designed to carry all locators, alongside a transmitter and accessories. Large paint holders on the outside carry even large 'tallboy' cans. Reflective chevrons reduce the risk of accidental damage.

Part No: 10/LOCATORBAG



### Hard Case Options

Sturdy hard cases designed to protect and transport precision locators with transmitters and accessories. Regional variations may exist, including wheeled versions.

Part No: 10/RD7K8KCASE



### Backpack and Tx Bag

The backpack has side pockets for tools and paint cans and its sleeve holds a precision locator. The Tx Bag fits in the backpack without the tool tray.

Available separately or as a set.

Part Numbers:

10/LOC-BACKPACK-V2

10/TX-BAG-V2

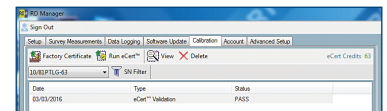
10/LOC-BACKPACK-SET-V2



### Remote Calibration and Software

#### eCert™ Calibration Credit

Verify and certify the calibration of the locator over the internet using the RD Manager™ PC software package, without returning the unit to a service center.



RD7100 and RD8100 locators: Part No: 10/ECERT-RD71/RD81

All RF Marker locators: Part No: 10/ECERT-MARKERS

#### eCAL™ Calibration Certificate Verification Key

Part of Radiodetection's Centros™ Manager application, eCAL™ allows the user to remotely validate the calibration of locator, providing confidence that the locator is performing to the very same high standards as it did when it first left the factory.

Certificate of Calibration		PASS	
Product: RD8100	Serial Number: 10100000000000000000	Date of Issue: 03/03/2016	Calibration Date: 04/03/2017
Order Number: 10100000000000000000	Reference Calibration Date: 28/10/2015		
Location of Calibration: Radiodetection Ltd (Western Drive, Bristol BS14 6AF, United Kingdom)		Reference Humidity: 14%	
Environmental Temperature: 15°C		Reference: 1.0%	
Test Procedure: ISO/IEC 17025 Part 2 (TEST) P03.3.1.6			
Traceability Information: Reference Calibration			
Technician ID: production	Model Description	Serial Number	Last Cal Date
Equipment used at reference Calibration:	Model Description	Serial Number	Last Cal Date
23224	Apert Function Generator	1014001532	02/07/2015
24614	Apert Digital Multimeter	1014700108	02/07/2015
033579	Turkey Transfer Power Supply	305021	28/01/2015
Calibration Results:			
Frequency:	H Ratio High	H Ratio Low	V Ratio High
315.0	0.9754	0.9750	0.9885
692.5	0.9750	0.9712	0.9893
			0.9888
			0.9905
			1.200
			0.800
			PASS
			PASS

RD8000™, RD7000™+, RD7000 and RD5000™ locators:

Part No: 10/RD7K8KECAL

#### RD MAP+™

Android Map&Share™ app compatible with RD8200, RD8100 Cable and Pipe locators and RD8100/RD7100 RF Marker locators.

Available to download free of charge from Google Play store.

#### RD Manager™

Windows 64 bit application to manage all RD8100, RD7100 and all RF Marker locators.

Available to download free of charge from:

[www.radiodetection.com/rdmanager](http://www.radiodetection.com/rdmanager)

#### Centros™ Manager

Windows 32 and 64 bit application to manage RD8000, RD7000+, RD7000 and RD5000 Cable and Pipe locators.

Available to download free of charge from:

[www.radiodetection.com/centrosmanager](http://www.radiodetection.com/centrosmanager)

Visit: [www.radiodetection.com](http://www.radiodetection.com) Follow us on:



Copyright © 2022 Radiodetection Ltd. All rights reserved. Radiodetection is a subsidiary of SPX Corporation. Radiodetection, RD8200, RD7200, RD8100, RD7100, RD8000, RD7000, RD5000, eCert, eCAL, SurveyCERT and Tx-121 are trademarks of Radiodetection Ltd. Due to a policy of continued development, we reserve the right to alter or amend any published specification without notice. Photos are indicative and products received may not be identical to those shown. This document may not be copied, reproduced, transmitted, modified or used, in whole or in part, without the prior written consent of Radiodetection Ltd.

Scan to see a full list of our office locations

