

GF Piping Systems

+GF+

Embrace the cold

COOL-FIT 4.0



Confident insulation

Efficient cooling processes are characterized by reliable installations and no maintenance times, zero system interruptions, and no energy loss. Choosing the right piping system can have a significant impact on these factors.

Cooling systems for industrial refrigeration, process cooling and HVAC consume large amounts of energy to maintain a constant system temperature. Selecting the appropriate piping system to support the cooling circuit is of utmost importance for operators who aim for an efficient and reliable cooling process. What should you consider in particular?

The two most important factors are the material and the insulation. With conventional metal installations, the risk of condensation and subsequent corrosion is exceptionally high. This risk also occurs to systems that have been post-insulated. The insulation material can be damaged during installation. Small gaps between the piping system and the insulation layer can occur and allow ice formation due to condensation and subsequent corrosion. In addition, post-insulation requires an extra work step.



Non-corrosive materials and vapor sealed insulation are of utmost importance for reliable and efficient piping systems in cooling applications.



COOL-FIT 4.0

Extreme reliability

The condensation and corrosion-free piping system for operations with no interruptions, zero maintenance, and highest efficiency.



System integrity

The complete product portfolio consists of pre-insulated pipes, fittings, valves, flexible hoses, and all tools necessary for a safe and reliable installation.



Efficient

High grade pre-insulation enhances energy efficiency (by 30%) with huge impact on costs and the planet's energy consumption.



Reliable and safe

Maintenance-free operation for safe production with plastic construction providing a 25-year minimum lifespan.



Corrosion-free

100% corrosion-free and longer lasting than metal alternatives. No incrustation for reliable long-term efficient operation, ensures safe and reliable precision cooling.



Fast and easy

Simple jointing with electrofusion and system-specific tools.



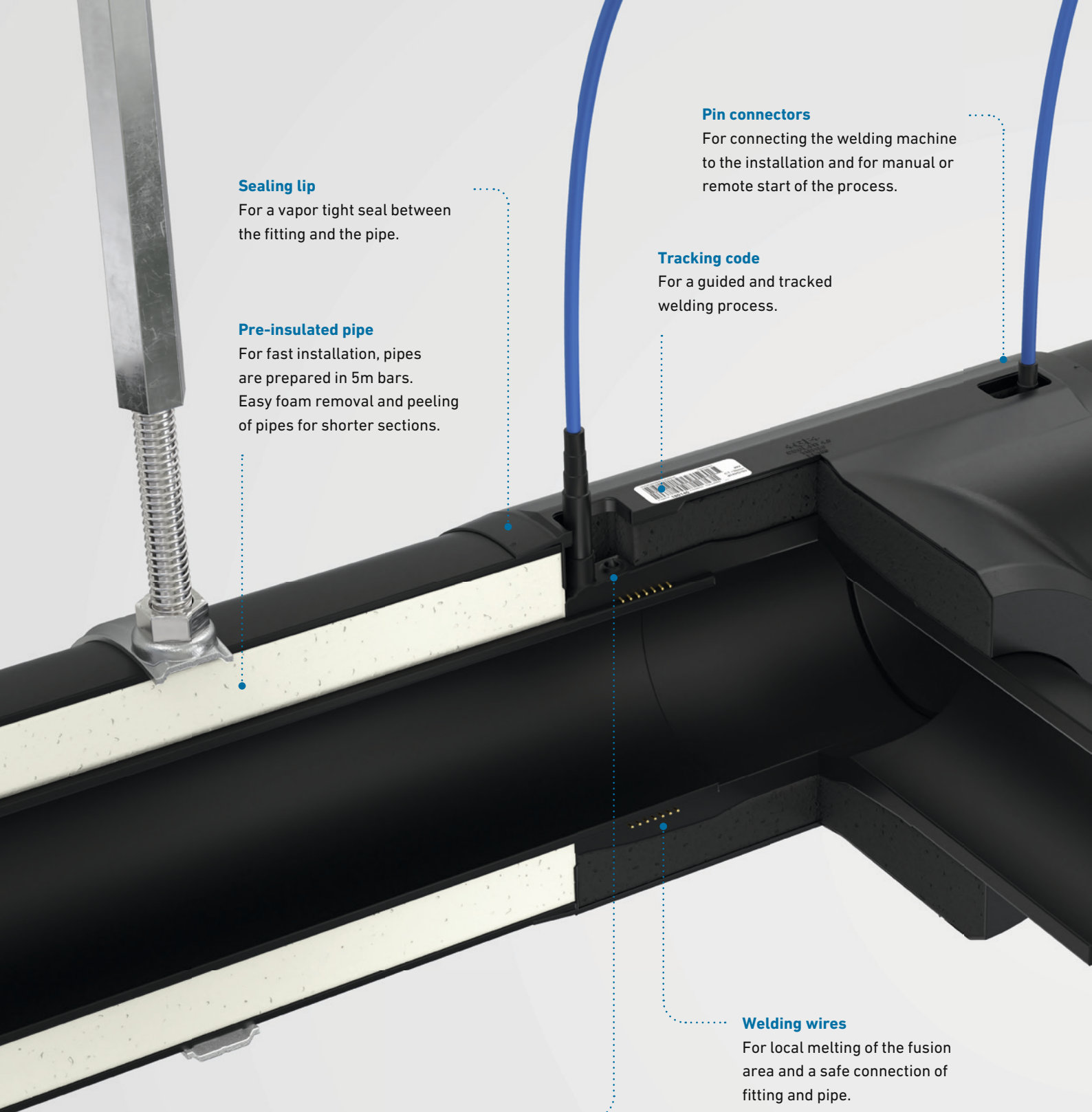
Lightweight

60% less weight than steel pipes per meter, allowing single-person installs.



Industry specific

Small and large diameters specifically focused on indoor and outdoor applications.



Sealing lip

For a vapor tight seal between the fitting and the pipe.

Pre-insulated pipe

For fast installation, pipes are prepared in 5m bars. Easy foam removal and peeling of pipes for shorter sections.

Pin connectors

For connecting the welding machine to the installation and for manual or remote start of the process.

Tracking code

For a guided and tracked welding process.

Welding wires

For local melting of the fusion area and a safe connection of fitting and pipe.

Welding indicator

For indication of a successful weld and haptic inspection after the welding process.

Learn how to make the perfect weld in the COOL-FIT video tutorial.

gfps.com/cool-fit



Pre-insulated fitting

For fast and easy installation thanks to pre-insulation. No manual post-insulation required.

Fixation

For securing against dislocation during installation with appropriate clamping tool.

Electrofusion

Confident installation

One of the most significant benefits of COOL-FIT is the safe, simple, and fast installation by electrofusion. This jointing technology allows jointing within seconds.

In electrofusion, wires built into the fitting are locally heated through electric current, which causes the melting and fusion of the surrounding material. This jointing technology ensures a secure and reliable connection. In combination

with a pre-insulated fitting with sealing lip, continuous insulation is also guaranteed. Once the components are assembled and secured against dislocation, the installation can be connected to the electrofusion unit. From there, the unit takes over and gives step-by-step instructions on the process. The fusion itself only takes seconds, and the welding indicator indicates its success. All welding data is stored on the welding device and is available for documenting the project.

Extreme efficiency

COOL-FIT leads the way when it comes to energy-efficient cooling and helps you to work in a more environmentally friendly and energy-efficient manner.

The number of air conditioners in Europe will double by 2030, which leaves our industries with the challenge of rising energy demand. As a company that is active worldwide, it is GF Piping Systems' mission to show our commitment to sustainability by supporting our customers' success with innovative, energy-saving solutions making the collective global footprint more sustainable.

COOL-FIT environmental benefits

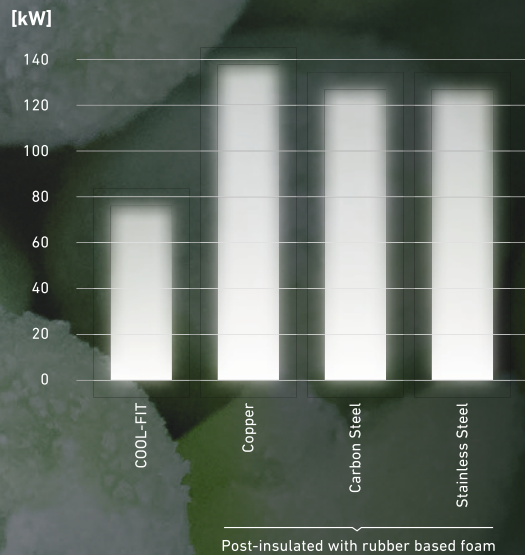
- Saves at least 30% of energy compared to traditional cooling systems, drastically reducing operating costs and CO₂ emissions.
- Non-corrosive, with at least 25-year lifetime leading to additionally saved resources related to maintenance, repairs and replacements.
- Helps achieve relevant green building declarations like DGNB, BREEAM, and LEED.
- Free of HBCD, halogens and halogenated blowing agents. It contains no chlorinated paraffins and neither lead nor tin.
- Contains no other substance of very high concern according to the REACH criteria of the European Chemicals Agency or any candidate substance.
- Strict quality management (ISO 9001) and health and safety management (OHSAS 18001) during production. GF Piping Systems is certified according to ISO 14001 for its environmental management system.



COOL-FIT for the environment

COOL-FIT helps to reduce the environmental impact of your cooling- and refrigeration application.

Compared to post-insulated metal systems, COOL-FIT is considerably more environmentally friendly and helps for operations to be more energy-efficient. For example: a cold store uses 1500 meters of piping to transport liquid for the cooling system. COOL-FIT releases about 100 tons carbon dioxide less than a metal system during production and operation. This saving is equivalent to a journey of 446'000 kilometers by car.



30%

energy savings compared to traditional cooling systems, drastically reducing operating costs and CO₂ emissions.

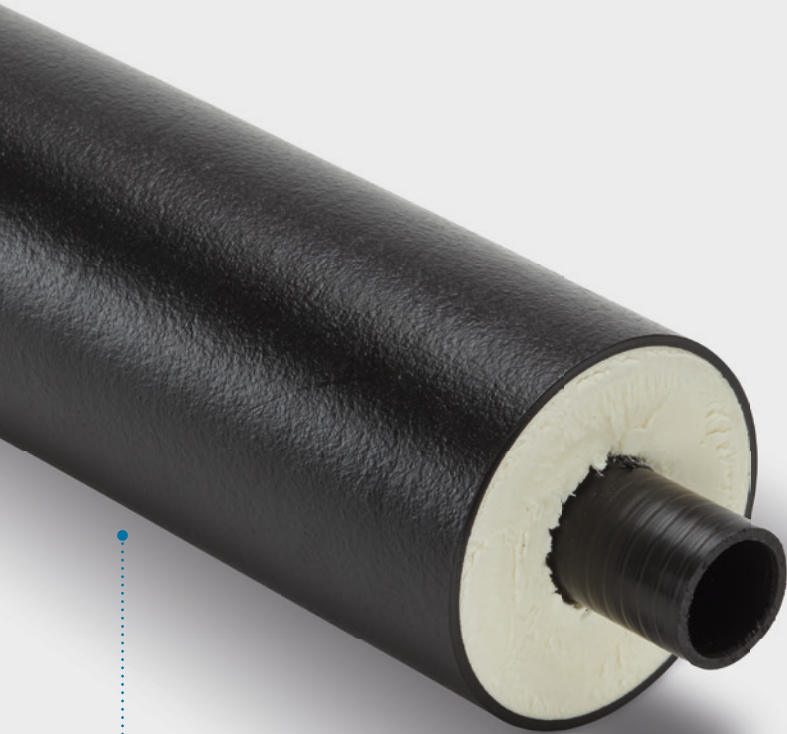
Complete system integrity

With COOL-FIT, GF Piping Systems offers a unique, top-notch piping system solution, including pre-insulated pipes, fittings, valves, flexible hoses, and tools. The system is available in a standard version or with a higher fire classification (COOL-FIT 4.0F), to withstand even harsher conditions.



Pre-insulated valves

GF Piping Systems' pre-insulated valves are an integral part of the COOL-FIT system and ensure an efficient cooling process. Pre-insulated valves ensure that the entire piping system is thoroughly insulated and perfectly sealed.



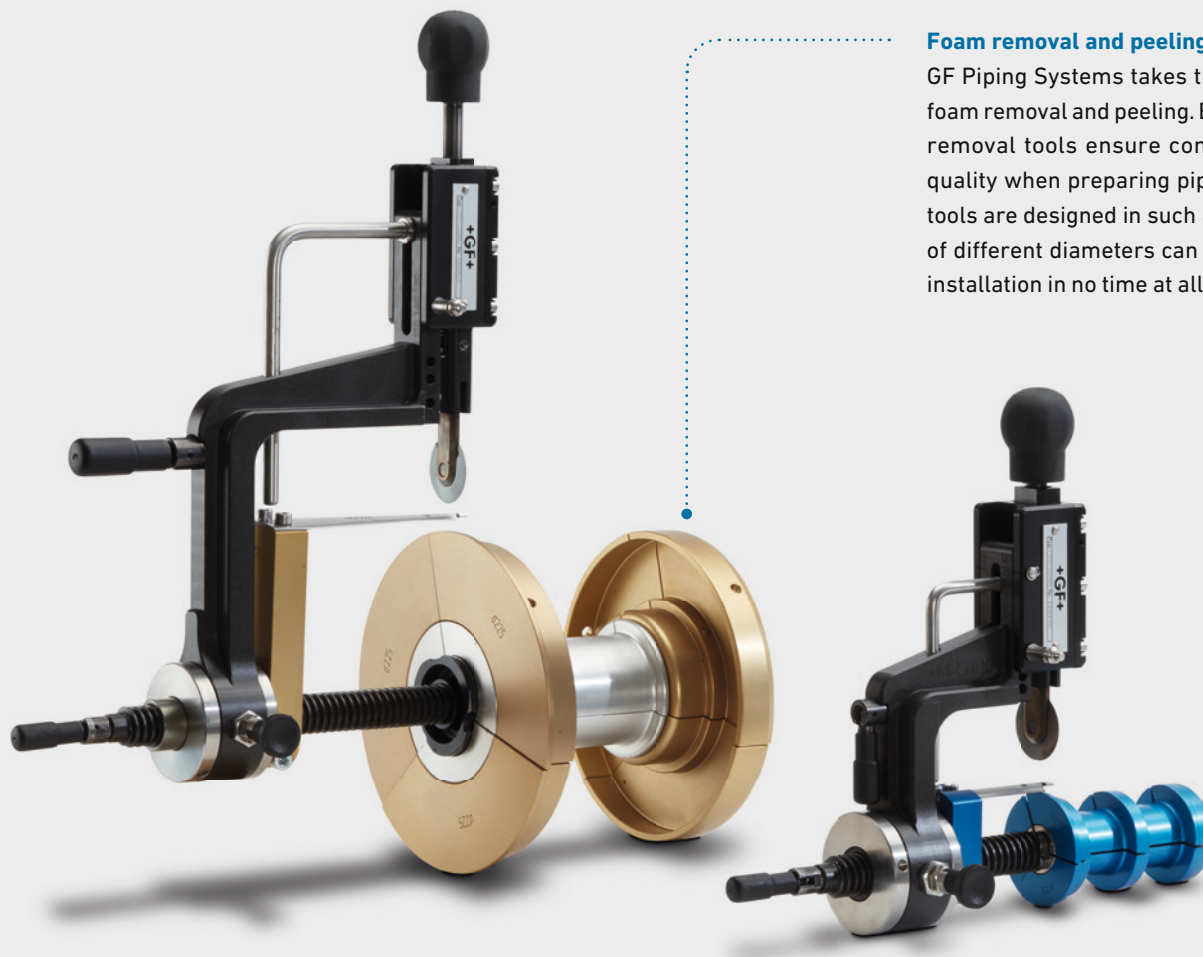
Pre-insulated pipes

Easy to join and install, lightweight pre-insulated pipes help to minimize energy loss and reduce long-term running costs. Insulated with high-energy efficient foam, they are ideal for both new construction and retrofitting.



Pre-insulated fittings

When creating branch lines, pre-insulated tee fittings make installation much easier. The fittings cover multiple dimension possibilities including various reductions.



Foam removal and peeling tools

GF Piping Systems takes the hassle out of foam removal and peeling. Easy to use foam removal tools ensure consistent peeling quality when preparing pipe surfaces. The tools are designed in such a way that pipes of different diameters can be prepared for installation in no time at all.

System properties

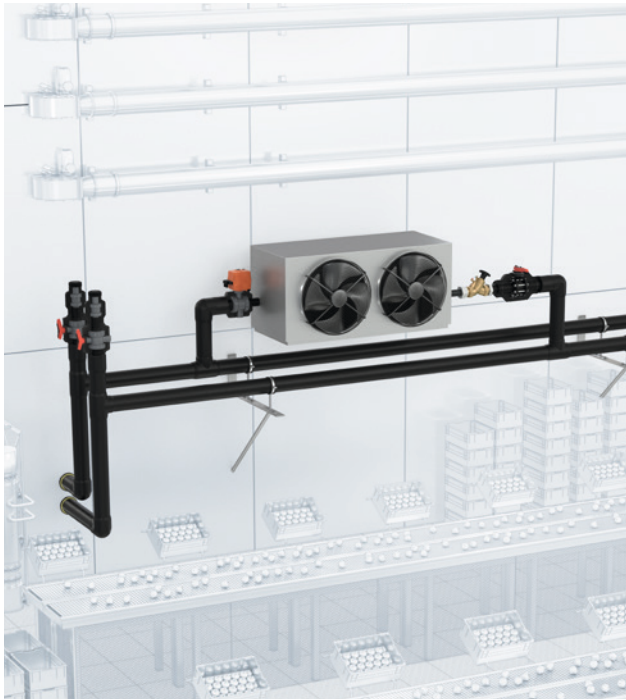
		COOL-FIT 4.0	COOL-FIT 4.0F
Materials *	Medium pipe	PE100	PE100
	Insulation	GF HE foam, halogen-free, closed-cell	GF HE foam, halogen-free, closed-cell
	Outer jacket	Pipe: HDPE, Fitting: GF-HE	Flame retardant - GF-FR
Dimensions		d32 mm (DN25) – d450 mm (DN450)	d160mm (DN150) - d225mm (DN200)
Connection technology		Electrofusion	Electrofusion
Nominal pressure	16 bar, SDR 11	d32 DN25 – d450 DN450	–
	10 bar, SDR 17	d160 DN150 – d450 DN450	d160 DN150 + d225 DN200
Insulation	Thermal conductivity λ at 20°C	≤ 0.022 W/mK (d32 – d110), ≤ 0.026 W/mK (d160 – d450)	≤ 0.026 W/mK
	Density	≥ 70 kg/m ³	≥ 70 kg/m ³
	Foam cell size	max. \varnothing 0.5 mm	max. \varnothing 0.5 mm
	Nominal thickness	40 mm	40 mm
Temperature	Medium	– 50 °C to +60 °C	0 °C to +60 °C
Weight (without medium)	Pipe d32 mm	1.39 kg/m	
	Pipe d225 mm	16.42 kg/m	19.84 kg/m
Environment	Resistance	Moisture- and vapor-tight	Moisture- and vapor-tight
	Ozone Depletion Potential (ODP)	Zero	Zero
Standards	EN ISO 15494	Plastic piping systems for industrial applications – Metric series	Plastic piping systems for industrial applications – Metric series
	ISO 7	Fittings	Fittings
	EN ISO 16135, EN ISO 16138	Industrial valves	Industrial valves
Fire classification	EN 13501-1	E	B-s2, d0

* All three materials are firmly bonded together.

Applications

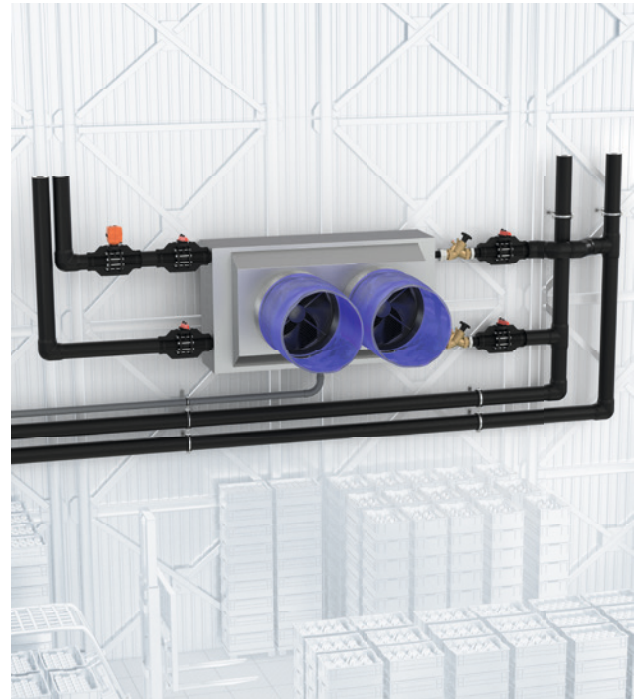
Commercial and industrial refrigeration

COOL-FIT 4.0 optimizes any commercial or industrial refrigeration set-up in food and beverage applications and improves your HVAC installation.



Food and beverage production

During the manufacturing and processing of food and beverages, reliable cooling is essential for production that is both faultlessly hygienic and economically efficient.



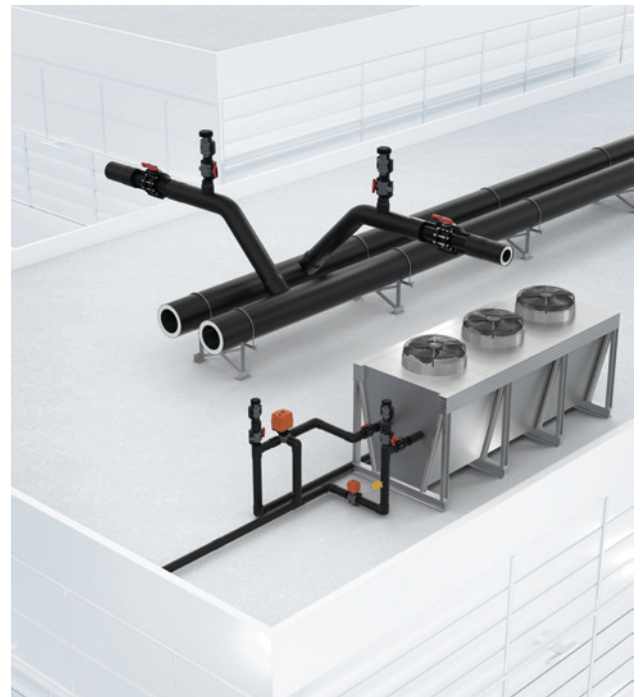
Cold stores

In cold stores, system reliability determines the preservation of the stock and the economic foundation of the company.



Wineries and breweries

Corrosion resistance is particularly vital in cooling processes of beverage production because of the constant use of water and liquid primary products.



Outdoor installation

Parts of cooling and refrigeration systems are often relocated outdoors and on roofs, eg. Data Centers. Thanks to COOL-FIT 4.0's lightweight and robustness, rooftop installations are compatible with the statics of buildings and the installation is weatherproof, and resistant to UV radiation.

One partner from planning to commissioning

With Specialized Solutions, GF Piping Systems supports the design and installation of state of the art plastic piping systems, so that owners and planners can concentrate on their daily business without interruption. GF Piping Systems is present every step of the way, from providing planning support on new projects to testing the condition of old systems.

More information at
gfps.com/specialized-solutions



Custom Product Design and Prefabrication

Having your individual needs and application in focus, our customizing teams forge the solution that fits you best, developing custom-made parts to complete systems or special solutions produced in small series, individual consulting and off-site prefabrication. Through our global network of flexible locations, we offer a wide range of comprehensive solutions. Tailored innovation, inspired by you.



Digital Libraries

The libraries cover three key areas for designing, creating, and maintaining a project: Building Information Modeling, the Plant Design Software, and the CAD Library helping you reduce costs and construction times while ensuring design accuracy and integrity. Reduce time and effort while ensuring design accuracy and integrity.





Engineering

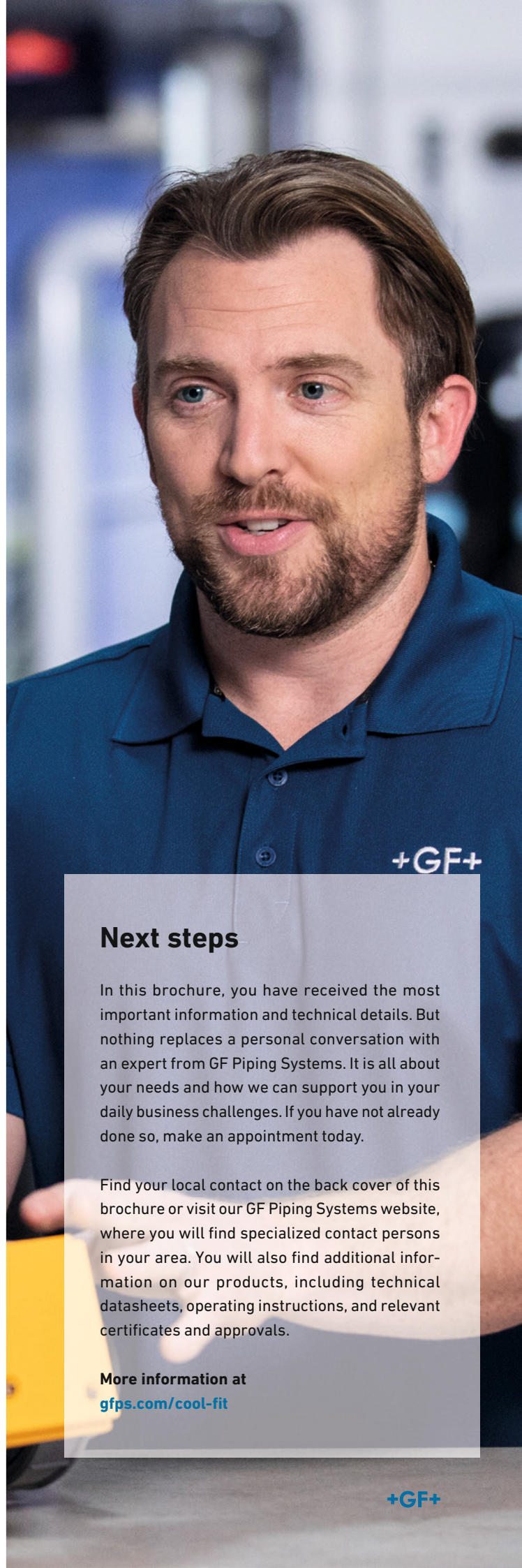
Increase the efficiency of your project with tailor-made analysis packages from GF Piping Systems. Minimize project risks by diminishing incorrect calculations or wrong material selection. Rely on GF's experience in fast project implementation and choose our durable, safe, and reliable piping systems delivery. Established knowledge, guiding you through.



Cooling Tool-Box

The cooling calculation tool from GF Piping Systems supports the dimensioning and design of the secondary circuit. The cooling calculation tool includes calculation functions for expansion/ contraction, energy saving, surface temperatures, pipe dimensioning, pressure losses, CO2 footprint, and many more.

Use the online calculator
gfps.com/cooling-tools



Next steps

In this brochure, you have received the most important information and technical details. But nothing replaces a personal conversation with an expert from GF Piping Systems. It is all about your needs and how we can support you in your daily business challenges. If you have not already done so, make an appointment today.

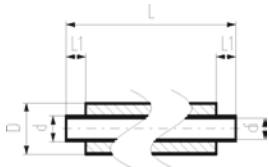
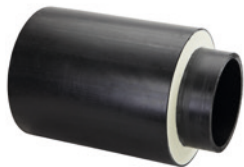
Find your local contact on the back cover of this brochure or visit our GF Piping Systems website, where you will find specialized contact persons in your area. You will also find additional information on our products, including technical datasheets, operating instructions, and relevant certificates and approvals.

More information at
gfps.com/cool-fit

Table of contents

COOL-FIT 4.0	18
COOL-FIT 4.0 Transition Fitting	32
COOL-FIT 4.0 Flexible Hoses	55
COOL-FIT 4.0 Valves	56
Accessories	61
Heat tracing	72
Tools	74
Spare parts	78

COOL-FIT 4.0



COOL-FIT 4.0 Pipe d32-d450

Model:

- Pre-insulated PE100 SDR11/17 metric
- Insulation made from GF HE foam
- Impact resistant. Color: black
- Length: 5m for d32-d225, 5.9m for d250-d450
- With free ends for electrofusion

d (mm)	d/D (mm)	DN (mm)	SDR	PN (bar)	Code	Weight (kg/m)	di (mm)	L (mm)	L1 (mm)	closest inch (inch)
32	32/90	25	11	16	738 173 108	1.411	26.2	5000	36	1
40	40/110	32	11	16	738 173 109	2.054	32.6	5000	40	1 1/4
50	50/110	40	11	16	738 173 110	2.221	40.8	5000	44	1 1/2
63	63/125	50	11	16	738 173 111	2.987	51.4	5000	48	2
75	75/140	65	11	16	738 173 112	3.757	61.4	5000	55	2 1/2
90	90/160	80	11	16	738 173 113	4.819	73.6	5000	62	3
110	110/180	100	11	16	738 173 114	6.200	90.0	5000	72	4
160	160/250	150	17	10	738 173 117	9.921	141.0	5000	90	6
225	225/315	200	17	10	738 173 120	16.620	198.2	5000	110	8
250	250/355	250	17	10	738 173 021	18.180	220.4	5900	123	10
280	280/400	250	17	10	738 173 022	22.640	246.8	5900	126	10
315	315/450	300	17	10	738 173 023	28.510	277.6	5900	133	12
355	355/500	350	17	10	738 173 024	35.350	312.8	5900	148	14
400	400/560	400	17	10	738 173 125	44.070	352.6	5900	150	16
450	450/630	450	17	10	738 173 126	55.490	396.6	5900	165	18

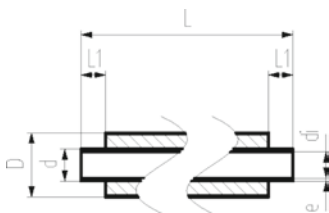
COOL-FIT 4.0 Pipe d160-d450 SDR11

Model:

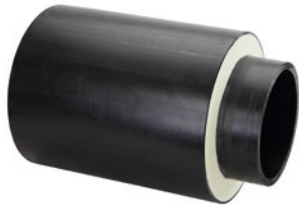
- Pre-insulated PE100 SDR11 metric
- Insulation made from GF HE foam
- Outer jacket impact resistant. Color: black
- Length: 5m for d160+d225, 5.9m for d250-d450
- With free ends for electrofusion

Note:

Make to order



d (mm)	d/D (mm)	DN (mm)	SDR	PN (bar)	Code	Weight (kg/m)	di (mm)	L (mm)	L1 (mm)	closest inch (inch)
160	160/250	150	11	16	738 173 267	12.213	130.8	5000	90	6
225	225/315	200	11	16	738 173 270	21.169	184.0	5000	110	8
250	250/355	250	11	16	738 173 271	24.681	204.6	5900	123	10
280	280/400	250	11	16	738 173 272	31.731	229.2	5900	126	10
315	315/450	300	11	16	738 173 273	39.333	257.8	5900	133	12
355	355/500	350	11	16	738 173 274	49.614	290.6	5900	148	14
400	400/560	400	11	16	738 173 275	62.811	327.4	5900	150	16
450	450/630	450	11	16	738 173 276	76.431	368.2	5900	165	18



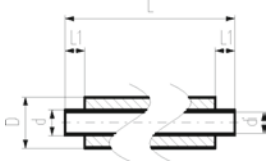
COOL-FIT 4.0 Pipe d160-d450 SDR11 11.9m length

Model:

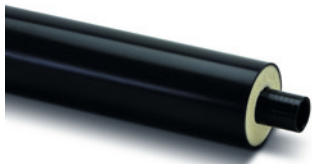
- Pre-insulated PE100 SDR11 metric
- Insulation made from GF HE foam
- Outer jacket impact resistant. Color: black
- Length: 11.9m
- With free ends for electrofusion

Note:

Consider transport and handling possibilities
Make to order



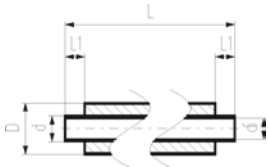
d (mm)	d/D (mm)	DN (mm)	SDR	PN (bar)	Code	Weight (kg/m)	di (mm)	L (mm)	L1 (mm)	closest inch (inch)
160	160/250	150	11	16	738 173 287	12.213	130.8	11900	90	6
225	225/315	200	11	16	738 173 290	21.169	184.0	11900	110	8
250	250/355	250	11	16	738 173 291	24.681	204.6	11900	123	10
280	280/400	250	11	16	738 173 292	31.731	229.2	11900	126	10
315	315/450	300	11	16	738 173 293	39.333	257.8	11900	133	12
355	355/500	350	11	16	738 173 294	49.614	290.6	11900	148	14
400	400/560	400	11	16	738 173 295	62.811	327.4	11900	150	16
450	450/630	450	11	16	738 173 296	76.431	368.2	11900	165	18



COOL-FIT 4.0F Pipe Fire retardant

Model:

- Pre-insulated PE100 SDR 17 metric
- Insulation made from GF HE foam
- Fire retardant jacket. Color: black
- With free ends for electrofusion



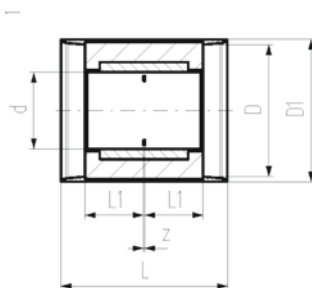
d (mm)	d/D (mm)	DN (mm)	SDR	PN (bar)	Code	di (mm)	L (mm)	L1 (mm)	closest inch (inch)
160	160/250	150	17	10	738 173 317	141.0	5000	90	6
225	225/315	200	17	10	738 173 320	198.2	5000	110	8



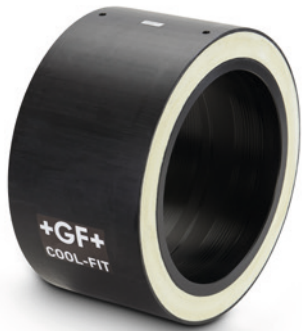
COOL-FIT 4.0 Coupler d32-d225

Model:

- Pre-insulated PE100 SDR 11 metric
- Insulation made from GF HE foam
- Impact resistant. Color: black
- Integrated sealing lip, for a moisture-proof and vapour tight sealing



d (mm)	d/D (mm)	DN (mm)	SDR	PN (bar)	Code	Weight (kg)	D1 (mm)	L (mm)	L1 (mm)	z (mm)	closest inch (inch)
32	32/90	25	11	16	738 913 108	0.179	97	127	36	5	1
40	40/110	32	11	16	738 913 109	0.129	117	133	40	3	1 ¼
50	50/110	40	11	16	738 913 110	0.169	117	141	44	3	1 ½
63	63/125	50	11	16	738 913 111	0.240	132	149	48	3	2
75	75/140	65	11	16	738 913 112	0.520	147	163	55	3	2 ½
90	90/160	80	11	16	738 913 113	0.750	168	178	62	4	3
110	110/180	100	11	16	738 913 114	0.831	188	198	72	4	4
160	160/250	150	11	16	738 913 117	1.726	258	233	90	3	6
225	225/315	200	11	16	738 913 120	3.783	324	275	110	5	8

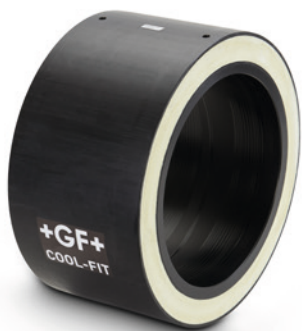
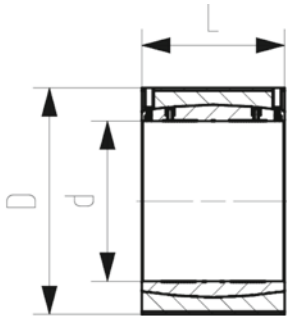


COOL-FIT 4.0 Coupler d250-d450

Model:

- Pre-insulated PE100 SDR 17 metric
- Insulation made from GF HE foam
- Outer jacket impact resistant. Color: black

d (mm)	d/D (mm)	DN (mm)	SDR	PN (bar)	Code	Weight (kg)	L (mm)	closest inch (inch)
250	250/355	250	17	10	738 911 821	6.290	247	10
280	280/400	250	17	10	738 911 822	8.020	252	10
315	315/450	300	17	10	738 911 823	9.110	267	12
355	355/500	350	17	10	738 911 824	13.780	290	14
400	400/560	400	17	10	738 911 875	23.450	294	16
450	450/630	450	17	10	738 911 876	22.590	326	18



COOL-FIT 4.0 Coupler d250-d450, SDR11

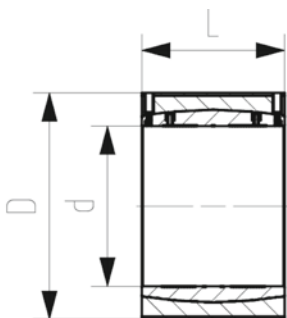
Model:

- Pre-insulated PE100 SDR11 metric
- Insulation made from GF HE foam
- Outer jacket impact resistant. Color: black

Note:

Make to order

d (mm)	d/D (mm)	DN (mm)	SDR	PN (bar)	Code	Weight (kg)	L (mm)	closest inch (inch)
250	250/355	250	11	16	738 913 271	6.352	247	10
280	280/400	250	11	16	738 913 272	9.910	252	10
315	315/450	300	11	16	738 913 273	11.150	267	12
355	355/500	350	11	16	738 913 274	17.356	290	14
400	400/560	400	11	16	738 913 275	23.770	294	16
450	450/630	450	11	16	738 913 276	31.290	326	18

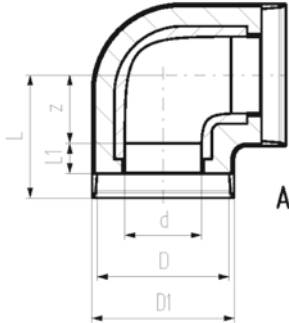




COOL-FIT 4.0 Elbow 90° d32-d225

Model:

- Pre-insulated PE100 SDR11, metric
- Insulation made from GF HE foam
- Outer jacket impact resistant. Color: black
- A: Electrofusion Fitting with integrated sealing lip, for a water and vapour tight sealing



d (mm)	d/D (mm)	DN (mm)	SDR	PN (bar)	Code	Weight (kg)
32	32/90	25	11	16	738 103 108	0.255
40	40/110	32	11	16	738 103 109	0.177
50	50/110	40	11	16	738 103 110	0.250
63	63/125	50	11	16	738 103 111	0.372
75	75/140	65	11	16	738 103 112	0.800
90	90/160	80	11	16	738 103 113	1.500
110	110/180	90	11	16	738 103 114	1.950
160	160/250	150	11	16	738 103 117	5.200
225	225/315	200	11	16	738 103 120	12.400

d (mm)	d/D (mm)	D1 (mm)	L (mm)	L1 (mm)	z (mm)	closest inch (inch)	Type
32	32/90	97	81	36	20	1	A
40	40/110	117	88	40	23	1 ¼	A
50	50/110	117	99	44	30	1 ½	A
63	63/125	132	107	48	34	2	A
75	75/140	147	120	55	40	2 ½	A
90	90/160	168	150	62	63	3	A
110	110/180	188	174	72	77	4	A
160	160/250	258	220	90	105	6	A
225	225/315	324	345	110	210	8	A



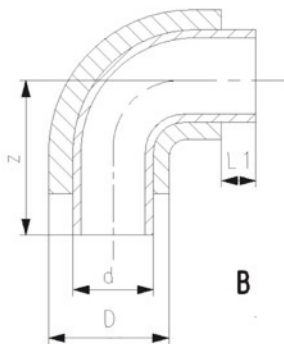
COOL-FIT 4.0 Bend 90° d250-d450, SDR11

Model:

- Pre-insulated PE100 SDR11 metric
- Insulation made from GF HE foam
- Outer jacket impact resistant. Color: black
- B: Spigot Fitting with free end (separate electrofusion fitting needed for joining)

Note:

Make to order



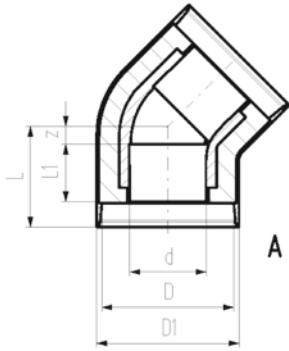
d (mm)	d/D (mm)	DN (mm)	SDR	PN (bar)	Code	Weight (kg)	L1 (mm)	z (mm)	closest inch (inch)	Type
250	250/355	250	11	16	738 003 271	11.900	123	375	10	B
280	280/400	250	11	16	738 003 272	18.252	126	430	10	B
315	315/450	300	11	16	738 003 273	28.750	133	470	12	B
355	355/500	350	11	16	738 003 274	65.000	148	900	14	B
400	400/560	400	11	16	738 003 275	81.840	150	980	16	B
450	450/630	450	11	16	738 003 276	109.900	165	1070	18	B



**COOL-FIT 4.0 Elbow 45°
d32-d225**

Model:

- Pre-insulated PE100 SDR11, metric
- Insulation made from GF HE foam
- Outer jacket impact resistant. Color: black
- A: Electrofusion Fitting with integrated sealing lip, for a water and vapour tight sealing



d (mm)	d/D (mm)	DN (mm)	SDR	PN (bar)	Code	Weight (kg)
32	32/90	25	11	16	738 153 108	0.108
40	40/110	32	11	16	738 153 109	0.162
50	50/110	40	11	16	738 153 110	0.218
63	63/125	50	11	16	738 153 111	0.315
75	75/140	65	11	16	738 153 112	0.650
90	90/160	80	11	16	738 153 113	1.030
110	110/180	90	11	16	738 153 114	1.270
160	160/250	150	11	16	738 153 117	4.100
225	225/315	200	11	16	738 153 120	17.603

d (mm)	d/D (mm)	D1 (mm)	L (mm)	L1 (mm)	z (mm)	closest inch (inch)	Type
32	32/90	97	72	36	11	1	A
40	40/110	117	76	40	11	1 ¼	A
50	50/110	117	82	44	13	1 ½	A
63	63/125	132	89	48	16	2	A
75	75/140	147	98	55	18	2 ½	A
90	90/160	168	117	62	30	3	A
110	110/180	188	138	72	41	4	A
160	160/250	258	161	90	46	6	A
225	225/315	324	278	110	143	8	A

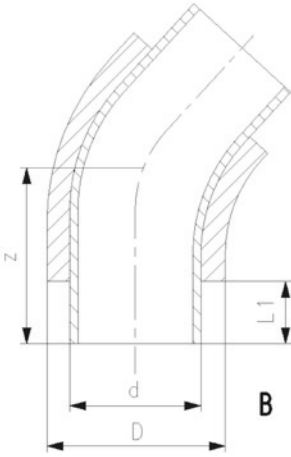
**COOL-FIT 4.0 Bend 45°
d250-d450**



Model:

- Pre-insulated PE100 SDR 17 metric
- Insulation made from GF HE foam
- Outer jacket impact resistant. Color: black
- B: Spigot Fitting with free end (separate electrofusion fitting needed for joining)

d (mm)	d/D (mm)	DN (mm)	SDR	PN (bar)	Code	Weight (kg)	L1 (mm)	z (mm)	closest inch (inch)	Type
250	250/355	250	17	10	738 053 121	12.840	123	440	10	B
280	280/400	250	17	10	738 053 122	18.000	126	460	10	B
315	315/450	300	17	10	738 053 123	21.360	133	535	12	B
355	355/500	350	17	10	738 053 124	18.720	148	620	14	B
400	400/560	400	17	10	738 053 175	43.920	150	650	16	B
450	450/630	450	17	10	738 053 176	54.360	165	680	18	B



COOL-FIT 4.0 Bend 45°
d250-d450, SDR11



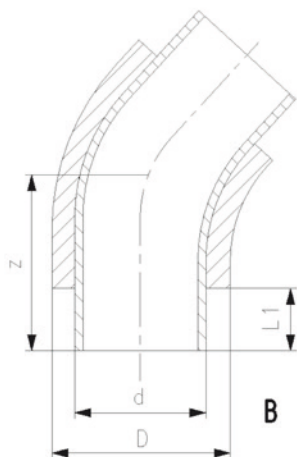
Model:

- Pre-insulated PE100 SDR11 metric
- Insulation made from GF HE foam
- Outer jacket impact resistant. Color: black
- B: Spigot Fitting with free end (separate electrofusion fitting needed for joining)

Note:

Make to order

d (mm)	d/D (mm)	DN (mm)	SDR	PN (bar)	Code	Weight (kg)	L1 (mm)	z (mm)	closest inch (inch)	Type
250	250/355	250	11	16	738 053 271	15.150	123	440	10	B
280	280/400	250	11	16	738 053 272	25.000	126	460	10	B
315	315/450	300	11	16	738 053 273	28.490	133	535	12	B
355	355/500	350	11	16	738 053 274	46.380	148	620	14	B
400	400/560	400	11	16	738 053 275	55.820	150	650	16	B
450	450/630	450	11	16	738 053 276	78.860	165	680	18	B



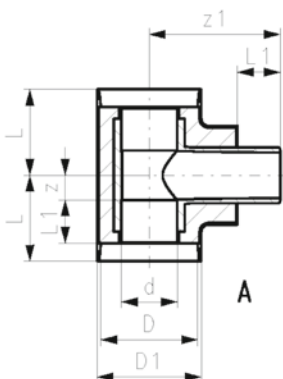
COOL-FIT 4.0 T90° equal
d32-d225



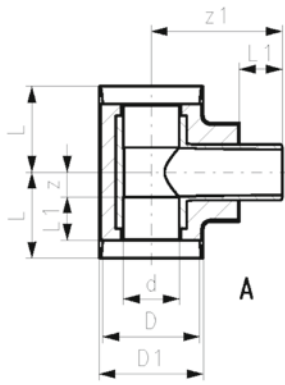
Model:

- Pre-insulated PE100 SDR11, metric
- Insulation made from GF HE foam
- Outer jacket impact resistant. Color: black
- A: Electrofusion Fitting with integrated sealing lip, for a water and vapour tight sealing

d (mm)	d/D (mm)	DN (mm)	SDR	PN (bar)	Code	Weight (kg)
32	32/90	25	11	16	738 203 108	0.161
40	40/110	32	11	16	738 203 109	0.257
50	50/110	40	11	16	738 203 110	0.342
63	63/125	50	11	16	738 203 111	0.514
75	75/140	65	11	16	738 203 112	1.000
90	90/160	80	11	16	738 203 113	1.400
110	110/180	100	11	16	738 203 114	2.500
160	160/250	150	11	16	738 203 117	5.600
225	225/315	200	11	16	738 203 120	16.748



d (mm)	d/D (mm)	D1 (mm)	L (mm)	L1 (mm)	z (mm)	z1 (mm)	closest inch (inch)	Type
32	32/90	97	79	36	18	118	1	A
40	40/110	117	87	40	22	132	1 ¼	A
50	50/110	117	94	44	25	138	1 ½	A
63	63/125	132	103	48	30	154	2	A
75	75/140	147	116	55	36	168	2 ½	A



d (mm)	d/D (mm)	D1 (mm)	L (mm)	L1 (mm)	z (mm)	z1 (mm)	closest inch (inch)	Type
90	90/160	168	130	62	43	187	3	A
110	110/180	188	154	72	57	207	4	A
160	160/250	258	192	90	77	263	6	A
225	225/315	324	355	110	220	337	8	A

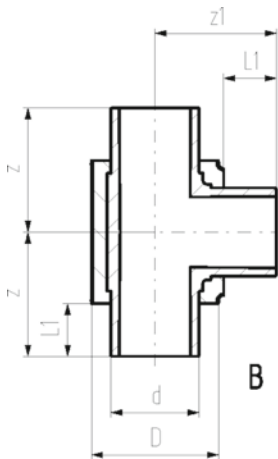


COOL-FIT 4.0 T90° equal d250-d450

Model:

- Pre-insulated PE100 SDR 17 metric
- Insulation made from GF HE foam
- Outer jacket impact resistant. Color: black
- B: Spigot Fitting with free end (separate electrofusion fitting needed for joining)

d (mm)	d/D (mm)	DN (mm)	SDR	PN (bar)	Code	Weight (kg)	L1 (mm)	z (mm)	z1 (mm)	closest inch (inch)	Type
250	250/355	250	17	10	738 203 121	12.000	123	500	500	10	B
280	280/400	250	17	10	738 203 122	22.300	126	500	500	10	B
315	315/450	300	17	10	738 203 123	21.480	133	500	500	12	B
355	355/500	350	17	10	738 203 124	30.600	148	650	700	14	B
400	400/560	400	17	10	738 203 175	42.000	150	650	700	16	B
450	450/630	450	17	10	738 203 176	67.200	165	700	750	18	B



**COOL-FIT 4.0 T90° equal
d250-d450, SDR11**



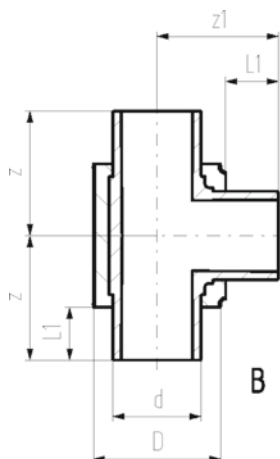
Model:

- Pre-insulated PE100 SDR11 metric
- Insulation made from GF HE foam
- Outer jacket impact resistant. Color: black
- B: Spigot Fitting with free end (separate electrofusion fitting needed for joining)

Note:

Make to order

d (mm)	d/D (mm)	DN (mm)	SDR	PN (bar)	Code	Weight (kg)	L1 (mm)	z (mm)	z1 (mm)	closest inch (inch)	Type
250	250/355	250	11	16	738 203 271	16.100	123	500	500	10	B
280	280/400	250	11	16	738 203 272	27.620	126	500	500	10	B
315	315/450	300	11	16	738 203 273	29.650	133	500	500	12	B
355	355/500	350	11	16	738 203 274	43.400	148	650	700	14	B
400	400/560	400	11	16	738 203 275	59.700	150	650	700	16	B
450	450/630	450	11	16	738 203 276	91.200	165	700	750	18	B



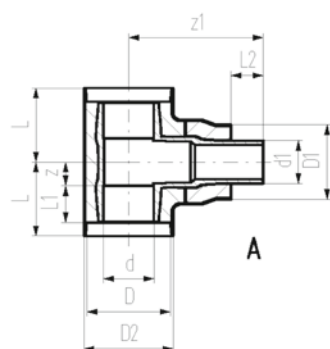
**COOL-FIT 4.0 T90° reduced
d32-d225**

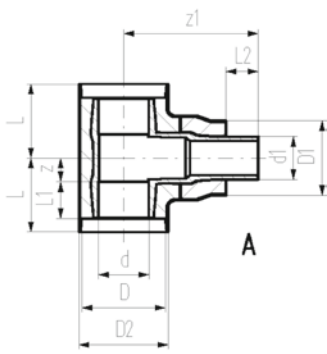


Model:

- Pre-insulated PE100 SDR11, metric
- Insulation made from GF HE foam
- Outer jacket impact resistant. Color: black
- A: Electrofusion Fitting with integrated sealing lip, for a water and vapour tight sealing
- *Available as long as stocks last

d (mm)	d/D (mm)	d1/D1 (mm)	DN (mm)	SDR	PN (bar)	Code	Weight (kg)	
75	75/140	63/125	65	11	16	738 203 218	0.863	
90	90/160	63/125	80	11	16	738 203 222	1.232	
90	90/160	75/140	80	11	16	738 203 223	1.293	
110	110/180	63/125	100	11	16	738 203 227	1.972	
110	110/180	75/140	100	11	16	738 203 228	1.949	
110	110/180	90/160	100	11	16	738 203 229	2.037	
*	160	160/250	63/125	150	11	16	738 203 247	5.150
*	160	160/250	90/160	150	11	16	738 203 249	5.147
*	160	160/250	110/180	150	11	16	738 203 250	5.220
	160	160/250	140/200	150	11	16	738 204 251	5.540
	225	225/315	63/125	200	11	16	738 203 264	16.832
	225	225/315	90/160	200	11	16	738 203 266	16.889
	225	225/315	110/180	200	11	16	738 203 267	16.805
	225	225/315	140/200	200	11	16	738 204 268	17.100
	225	225/315	160/250	200	11	16	738 203 269	18.500
	160	160/250	63/125	150	11	16	738 203 447	4.250
	160	160/250	90/160	150	11	16	738 203 449	4.420
	160	160/250	110/180	150	11	16	738 203 450	4.590





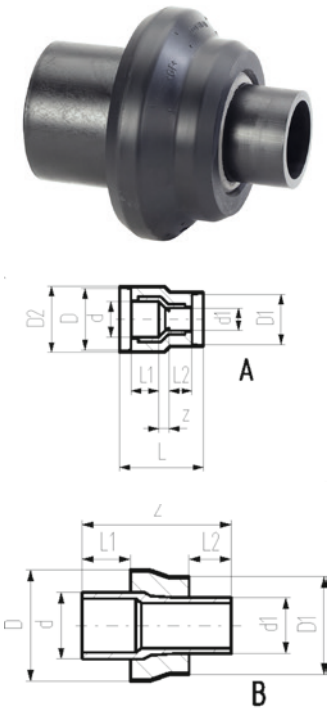
d (mm)	d/D (mm)	d1/D1 (mm)	D2 (mm)	L (mm)	L1 (mm)	L2 (mm)	z (mm)	z1 (mm)	Closest inch (inch)	Type
75	75/140	63/125	147	116	55	48	36	228	2 ½	A
90	90/160	63/125	168	130	62	48	43	253	3 - 2	A
90	90/160	75/140	168	130	62	55	43	252	3 - 2 ½	A
110	110/180	63/125	188	154	72	48	57	267	4 - 2	A
110	110/180	75/140	188	154	72	55	57	268	4 - 2 ½	A
110	110/180	90/160	188	154	72	62	57	268	4 - 3	A
*	160	160/250	63/125	258	192	90	48	77	6 - 2	A
*	160	160/250	90/160	258	192	90	62	77	6 - 3	A
*	160	160/250	110/180	258	192	90	72	77	6 - 5	A
	160	160/250	140/200	258	192	90	84	77	6 - 5	A
	225	225/315	63/125	324	355	110	48	220	8 - 2	A
	225	225/315	90/160	324	355	110	62	220	8 - 3	A
	225	225/315	110/180	324	355	110	72	220	8 - 4	A
	225	225/315	140/200	324	335	110	84	220	8 - 5	A
	225	225/315	160/250	324	355	110	90	220	8 - 6	A
	160	160/250	63/125	258	192	90	48	77	6 - 1	
	160	160/250	90/160	258	192	90	62	77	6 - 3	
	160	160/250	110/180	258	192	90	72	77	6 - 5	



COOL-FIT 4.0 Reducer d32-d225

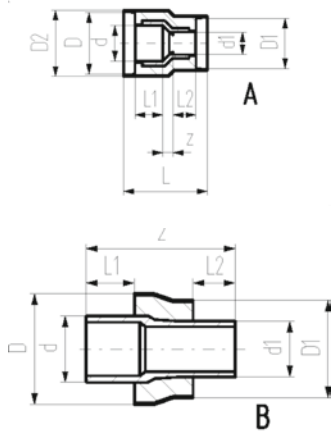
Model:

- Pre-insulated PE100 SDR11, metric
- Insulation made from GF HE foam
- Outer jacket impact resistant. Color: black
- A: Electrofusion Fitting with integrated sealing lip, for a water and vapour tight sealing
- B: Spigot Fitting with free end



d (mm)	d/D (mm)	d1/D1 (mm)	DN (mm)	SDR	PN (bar)	Code	Weight (kg)
40	40/110	32/90	32	11	16	738 903 206	0.250
50	50/110	32/90	40	11	16	738 903 209	0.280
50	50/110	40/110	40	11	16	738 903 210	0.320
63	63/125	32/90	50	11	16	738 903 212	0.217
63	63/125	40/110	50	11	16	738 903 213	0.232
63	63/125	50/110	50	11	16	738 903 214	0.243
75	75/140	63/125	65	11	16	738 903 318	0.264
90	90/160	63/125	80	11	16	738 903 322	0.387
90	90/160	75/140	80	11	16	738 903 323	0.416
110	110/180	63/125	100	11	16	738 903 327	0.566
110	110/180	75/140	100	11	16	738 903 328	0.577
110	110/180	90/160	100	11	16	738 903 329	0.644
160	160/250	63/125	150	11	16	738 903 347	1.298
160	160/250	90/160	150	11	16	738 903 349	1.323
160	160/250	110/180	150	11	16	738 903 350	1.362
160	160/250	140/200	150	11	16	738 904 351	1.664
225	225/315	63/125	200	11	16	738 903 364	2.960
225	225/315	90/160	200	11	16	738 903 366	3.018
225	225/315	110/180	200	11	16	738 903 367	3.079
225	225/315	140/200	200	11	16	738 904 368	3.172
225	225/315	160/250	200	11	16	738 903 369	3.550

d (mm)	d/D (mm)	d1/D1 (mm)	D2 (mm)	L (mm)	L1 (mm)	L2 (mm)	z (mm)	Closest inch (inch)	Type
40	40/110	32/90	117	143	40	36	17	1 ¼ - 1	A
50	50/110	32/90	117	151	44	36	21	1 ½ - 1	A
50	50/110	40/110	117	149	44	40	15	1 ½ - 1 ¼	A
63	63/125	32/90	132	160	48	36	26	2 - 1	A
63	63/125	40/110	132	159	48	40	21	2 - 1 ¼	A
63	63/125	50/110	132	159	48	44	17	2 - 1 ½	A



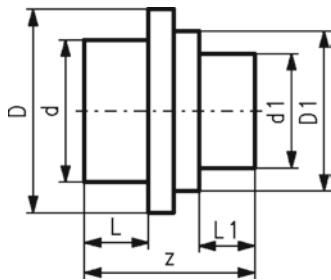
d (mm)	d/D (mm)	d1/D1 (mm)	D2 (mm)	L (mm)	L1 (mm)	L2 (mm)	z (mm)	Closest inch (inch)	Type
75	75/140	63/125			55	48	170	2 ½ - 2	B
90	90/160	63/125			62	48	190	3 - 2	B
90	90/160	75/140			62	55	189	3 - 2 ½	B
110	110/180	63/125			72	48	204	4 - 2	B
110	110/180	75/140			72	55	205	4 - 2 ½	B
110	110/180	90/160			72	62	205	4 - 3	B
160	160/250	63/125			90	48	244	6 - 2	B
160	160/250	90/160			90	62	244	6 - 3	B
160	160/250	110/180			90	72	242	6 - 4	B
160	160/250	140/200			90	84	257	6 - 5	B
225	225/315	63/125			110	48	295	8 - 2	B
225	225/315	90/160			110	62	295	8 - 3	B
225	225/315	110/180			110	72	295	8 - 4	B
225	225/315	140/200			110	84	296	8 - 5	B
225	225/315	160/250			110	90	279	8 - 6	B

COOL-FIT 4.0 Reducer d250-d450



Model:

- Pre-insulated PE100 SDR 17 metric
- Insulation made from GF HE foam
- Outer jacket impact resistant. Color: black
- B: Spigot Fitting with free end (separate electrofusion fitting needed for joining)



d (mm)	d/D (mm)	d1/D1 (mm)	DN	SDR	PN (bar)	Code	Weight (kg)	L (mm)	L1 (mm)	z (mm)	Type
250	250/355	225/315	250	17	10	738 903 825	2.800	123	110	332	B
280	280/400	225/315	250	17	10	738 903 829	4.700	126	110	335	B
280	280/400	250/355	250	17	10	738 903 830	5.100	133	110	365	B
315	315/450	225/315	300	17	10	738 903 836	7.100	126	110	340	B
315	315/450	250/355	300	17	10	738 903 837	7.400	133	123	365	B
315	315/450	280/400	300	17	10	738 903 838	6.800	133	126	365	B
355	355/500	250/355	350	17	10	738 903 844	8.200	148	123	390	B
355	355/500	280/400	350	17	10	738 903 845	7.700	148	126	390	B
355	355/500	315/450	350	17	10	738 903 846	8.300	148	133	390	B
400	400/560	280/400	400	17	10	738 903 853	9.100	150	126	415	B
400	400/560	315/450	400	17	10	738 903 854	11.400	150	133	420	B
400	400/560	355/500	400	17	10	738 903 855	11.000	150	148	405	B
450	450/630	280/400	450	17	10	738 903 862	13.200	165	126	390	B
450	450/630	315/450	450	17	10	738 903 863	13.600	165	133	390	B
450	450/630	355/500	450	17	10	738 903 864	13.700	165	148	393	B
450	450/630	400/560	450	17	10	738 903 865	14.800	165	150	395	B



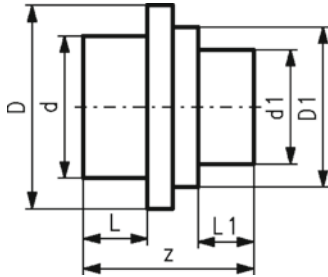
COOL-FIT 4.0 Reducer d250-d450, SDR11

Model:

- Pre-insulated PE100 SDR11 metric
- Insulation made from GF HE foam
- Outer jacket impact resistant. Color: black
- B: Spigot Fitting with free end (separate electrofusion fitting needed for joining)

Note:

Make to order



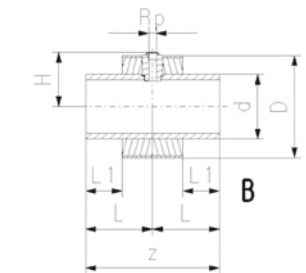
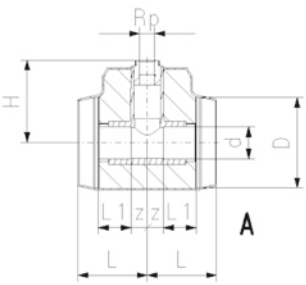
d (mm)	d/D (mm)	d1/D1 (mm)	DN (mm)	SDR	PN (bar)	Code	Weight (kg)	L (mm)	L1 (mm)	z (mm)	Type
250	250/355	225/315	250	11	16	738 903 925	5.365	123	110	332	B
280	280/400	225/315	250	11	16	738 903 929	6.750	126	110	335	B
280	280/400	250/355	250	11	16	738 903 930	7.228	126	123	340	B
315	315/450	225/315	300	11	16	738 903 936	8.690	133	110	365	B
315	315/450	250/355	300	11	16	738 903 937	9.340	133	123	365	B
315	315/450	280/400	300	11	16	738 903 939	9.660	133	126	365	B
355	355/500	250/355	350	11	16	738 903 944	10.218	148	123	390	B
355	355/500	280/400	350	11	16	738 903 945	10.472	148	126	390	B
355	355/500	315/450	350	11	16	738 903 946	10.960	148	133	390	B
400	400/560	280/400	400	11	16	738 903 953	11.590	150	126	415	B
400	400/560	315/450	400	11	16	738 903 954	12.590	150	133	415	B
400	400/560	355/500	400	11	16	738 903 955	12.980	150	148	420	B
450	450/630	280/400	450	11	16	738 903 962	17.900	165	126	405	B
450	450/630	315/450	450	11	16	738 903 963	18.500	165	133	390	B
450	450/630	355/500	450	11	16	738 903 964	19.300	165	148	393	B
450	450/630	400/560	450	11	16	738 903 965	20.336	165	150	395	B



COOL-FIT 4.0 Installation fitting type 313 Rp d32-d225

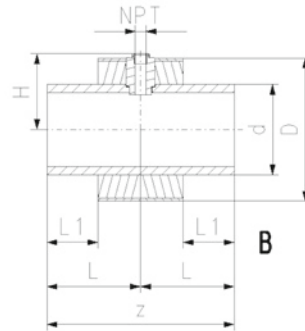
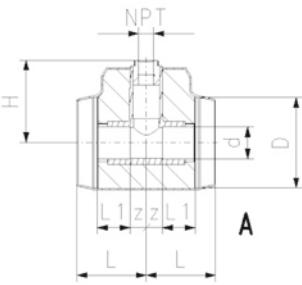
Model:

- Pre-insulated, PE100, SDR11, metric
- Insulation made from GF HE foam
- Impact resistant. Color: black
- With threaded branch for sensors (i.e temperature, pressure)
- A: Electrofusion Fitting with integrated sealing lip, for a water and vapour tight sealing
- B: Spigot Fitting with free end



d (mm)	d/D (mm)	Thread Type	Size (inch)	DN (mm)	SDR	PN (bar)	Code	Weight (kg)
32	32/90	Rp	½	50	11	16	738 313 608	0.169
40	40/110	Rp	½	32	11	16	738 313 609	0.267
40	40/110	Rp	¾	32	11	16	738 313 659	0.269
50	50/110	Rp	½	40	11	16	738 313 610	0.354
50	50/110	Rp	¾	40	11	16	738 313 660	0.356
63	63/125	Rp	½	50	11	16	738 313 611	0.537
63	63/125	Rp	¾	50	11	16	738 313 661	0.539
75	75/140	Rp	½	65	11	16	738 313 612	0.773
75	75/140	Rp	¾	65	11	16	738 313 662	0.774
90	90/160	Rp	½	80	11	16	738 313 613	1.164
90	90/160	Rp	¾	80	11	16	738 313 663	1.165
110	110/180	Rp	½	100	11	16	738 313 614	1.944
110	110/180	Rp	¾	100	11	16	738 313 664	1.944
160	160/250	Rp	½	150	11	16	738 313 617	2.496
160	160/250	Rp	¾	150	11	16	738 313 667	2.489
225	225/315	Rp	½	200	11	16	738 313 620	5.155
225	225/315	Rp	¾	200	11	16	738 313 670	5.146

L (mm)	L1 (mm)	z (mm)	H (mm)	Type
79	36	18	95	A
87	40	22	105	A
87	40	22	108	A
94	44	25	107	A
94	44	25	110	A
103	48	30	120	A
103	48	30	123	A
116	55	36	127	A
116	55	36	130	A
130	62	43	139	A
130	62	43	142	A
154	72	57	151	A
154	72	57	154	A
165	90	330	134	B
165	90	330	134	B
185	110	370	166	B
185	110	370	169	B



COOL-FIT 4.0 Installation fitting type 313 NPT d32-d225

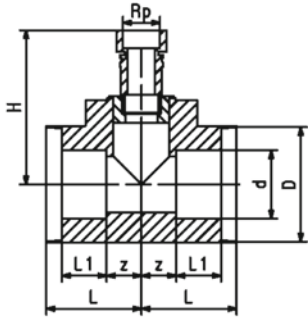
Model:

- Pre-insulated PE100 SDR11 ANSI
- Insulation made from GF HE foam
- Impact resistant. Color: black
- With threaded branch for sensors (i.e temperature, pressure)
- A: Electrofusion Fitting with integrated sealing lip, for a water and vapour tight sealing
- B: Spigot Fitting with free end

d (mm)	d/D (mm)	Thread Type	Size (inch)	DN (mm)	SDR	PN (bar)	Code	Weight (kg)
32	32/90	NPT	½	25	11	16	738 313 508	0.169
40	40/110	NPT	½	32	11	16	738 313 509	0.267
40	40/110	NPT	¾	32	11	16	738 313 559	0.269
50	50/110	NPT	½	40	11	16	738 313 510	0.354
50	50/110	NPT	¾	40	11	16	738 313 560	0.356
63	63/125	NPT	½	50	11	16	738 313 511	0.537
63	63/125	NPT	¾	50	11	16	738 313 561	0.539
75	75/140	NPT	½	65	11	16	738 313 512	0.773
75	75/140	NPT	¾	65	11	16	738 313 562	0.774
90	90/160	NPT	½	80	11	16	738 313 513	1.164
90	90/160	NPT	¾	80	11	16	738 313 563	1.165
110	110/180	NPT	½	100	11	16	738 313 514	1.944
110	110/180	NPT	¾	100	11	16	738 313 564	1.944
160	160/250	NPT	½	150	11	16	738 313 517	2.496
160	160/250	NPT	¾	150	11	16	738 313 567	2.489
225	225/315	NPT	½	200	11	16	738 313 520	5.155
225	225/315	NPT	¾	200	11	16	738 313 570	5.146

L (mm)	L1 (mm)	z (mm)	H (mm)	Type
79	36	18	95	A
87	40	22	105	A
87	40	22	108	A
94	44	25	107	A
94	44	25	110	A
103	48	30	120	A
103	48	30	123	A
116	55	36	127	A
116	55	36	130	A
130	62	43	139	A
130	62	43	142	A
154	72	57	151	A
154	72	57	154	A
165	90	330	134	B
165	90	330	134	B
185	110	370	166	B
185	110	370	169	B

COOL-FIT 4.0 Transition Fitting



COOL-FIT 4.0 Transition Tee90° PE/brass With female thread Rp

Model:

- Pre-insulated PE100 SDR11, metric
- Brass CuZn40Pb2 with female thread Rp
- Insulation made from GF HE foam
- Impact resistant. Color: black
- Electrofusion Fitting with integrated sealing lip, for a water and vapour tight sealing

d (mm)	d/D (mm)	Thread Type	Size (inch)	DN (mm)	SDR	PN (bar)	Code	Weight (kg)
63	63/125	Rp	2	50	11	16	738 953 061	1.700
75	75/140	Rp	2	65	11	16	738 953 062	1.900
90	90/160	Rp	2	80	11	16	738 953 063	2.300
110	110/180	Rp	2	100	11	16	738 953 064	3.100
160	160/250	Rp	2	150	11	16	738 953 067	5.450
225	225/315	Rp	2	200	11	16	738 953 070	18.100
40	40/110	Rp	1	32	11	16	738 953 159	0.500
50	50/110	Rp	1	40	11	16	738 953 160	0.588
63	63/125	Rp	1	50	11	16	738 953 161	0.760
75	75/140	Rp	1	65	11	16	738 953 162	1.246
90	90/160	Rp	1	80	11	16	738 953 163	1.650
110	110/180	Rp	1	100	11	16	738 953 164	2.750
160	160/250	Rp	1	150	11	16	738 953 167	4.450
225	225/315	Rp	1	200	11	16	738 953 170	17.100

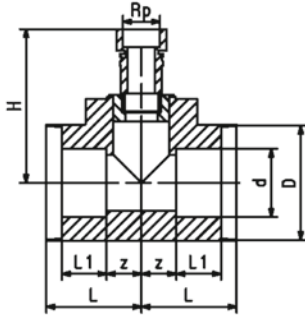
d (mm)	L (mm)	L1 (mm)	z (mm)	H (mm)
63	103	48	30	222
75	116	55	36	226
90	130	62	43	241
110	154	72	57	251
160	165	90	330	289
225	185	110	370	446
40	87	40	22	173
50	94	44	25	173
63	103	48	30	186
75	116	55	36	193
90	130	62	43	205
110	154	72	57	215
160	165	90	330	253
225	185	110	370	444



**COOL-FIT 4.0 Transition Tee90° PE/stainless steel
With female thread Rp**

Model:

- Pre-insulated PE100 SDR11, metric
- Stainless steel 1.4404 / 316L with female thread Rp
- Insulation made from GF HE foam
- Impact resistant. Color: black
- Electrofusion Fitting with integrated sealing lip, for a water and vapour tight sealing



d (mm)	d/D (mm)	Thread Type	Size (inch)	DN (mm)	SDR	PN (bar)	Code	Weight (kg)
63	63/125	Rp	2	50	11	16	738 943 061	1.700
75	75/140	Rp	2	65	11	16	738 943 062	2.150
90	90/160	Rp	2	80	11	16	738 943 063	2.530
110	110/180	Rp	2	100	11	16	738 943 064	3.650
160	160/250	Rp	2	150	11	16	738 943 067	5.380
225	225/315	Rp	2	200	11	16	738 943 070	18.100
40	40/110	Rp	1	32	11	16	738 943 159	0.490
50	50/110	Rp	1	40	11	16	738 943 160	0.575
63	63/125	Rp	1	50	11	16	738 943 161	0.747
75	75/140	Rp	1	65	11	16	738 943 162	1.233
90	90/160	Rp	1	80	11	16	738 943 163	1.633
110	110/180	Rp	1	100	11	16	738 943 164	2.733
160	160/250	Rp	1	150	11	16	738 943 167	4.483
225	225/315	Rp	1	200	11	16	738 943 170	17.100

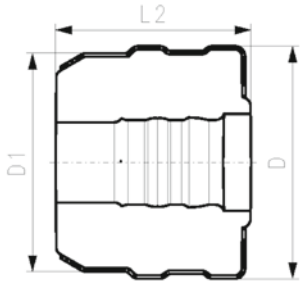
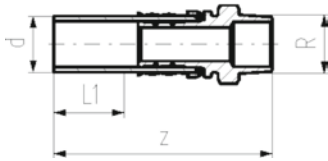
d (mm)	L (mm)	L1 (mm)	z (mm)	H (mm)
63	103	48	30	222
75	116	55	36	226
90	130	62	43	241
110	154	72	57	251
160	165	90	330	289
225	185	110	370	446
40	87	40	22	173
50	94	44	25	173
63	103	48	30	186
75	116	55	36	193
90	130	62	43	205
110	154	72	57	215
160	165	90	330	253
225	185	110	370	444



COOL-FIT 4.0 Adaptor fitting PE/stainless steel With male thread R

Model:

- Spigot fitting PE100 SDR11, metric with free end
- Stainless steel 1.4404 / 316L with male thread R
- Gasket: O-ring EPDM
- Including Insulation half shells



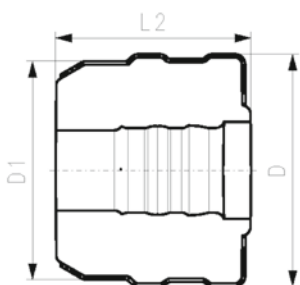
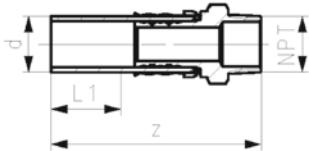
d (mm)	D (mm)	Thread Type	Size (inch)	DN (mm)	SDR	PN (bar)	Code	Weight (kg)	D1 (mm)	L1 (mm)	L2 (mm)	z (mm)
32	103	R	1/2	25	11	16	738 943 508	0.224	90	36	80	130
32	103	R	3/4	25	11	16	738 943 518	0.232	90	36	80	134
32	103	R	1	25	11	16	738 943 528	0.241	90	36	80	134
40	128	R	1 1/4	32	11	16	738 943 509	0.655	110	40	91	156
50	138	R	1 1/2	40	11	16	738 943 510	1.020	110	44	96	168
63	149	R	2	50	11	16	738 943 511	1.458	125	48	103	179



COOL-FIT 4.0 Adaptor fitting PE/stainless steel with male thread NPT

Model:

- Spigot fitting PE100 SDR11, ANSI with free end
- Stainless steel 1.4404 / 316L with male thread NPT
- Gasket: O-ring EPDM
- Including insulation half shells



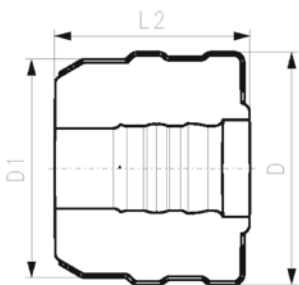
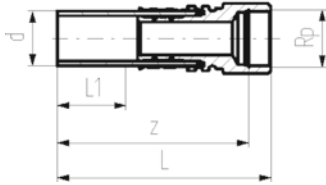
d (mm)	D (mm)	Thread Type	Size (inch)	SDR	PN (bar)	Code	Weight (kg)	D1 (mm)	L1 (mm)	L2 (mm)	z (mm)
32	103	NPT	1/2	11	16	738 943 808	0.224	90	36	80	129
32	103	NPT	3/4	11	16	738 943 818	0.232	90	36	80	133
32	103	NPT	1	11	16	738 943 828	0.241	90	36	80	134
40	128	NPT	1 1/4	11	16	738 943 809	0.655	110	40	91	151
50	138	NPT	1 1/2	11	16	738 943 810	1.021	110	44	96	163
63	149	NPT	2	11	16	738 943 811	1.459	125	48	103	174



**COOL-FIT 4.0 Adaptor fitting PE/stainless steel
With female thread Rp**

Model:

- Spigot fitting PE100 SDR11, metric with free end
- Stainless steel 1.4404 / 316L with female thread Rp
- Gasket: O-ring EPDM
- Including Insulation half shells



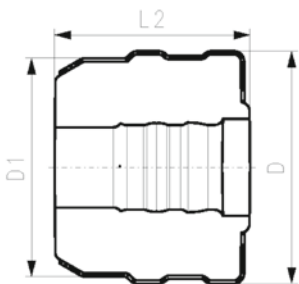
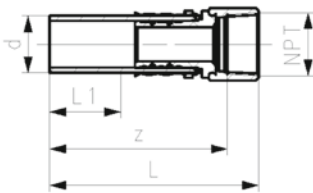
d (mm)	D (mm)	Thread Type	Size (inch)	DN (mm)	SDR	PN (bar)	Code	Weight (kg)	D1 (mm)	L1 (mm)	L2 (mm)	z (mm)
32	104	Rp	½	25	11	16	738 943 008	0.247	90	36	101	118
32	104	Rp	¾	25	11	16	738 943 018	0.272	90	36	101	116
32	104	Rp	1	25	11	16	738 943 028	0.297	90	36	101	115
40	128	Rp	1 ¼	32	11	16	738 943 009	0.683	110	40	91	141
50	138	Rp	1 ½	40	11	16	738 943 010	0.734	110	44	96	128
63	149	Rp	2	50	11	16	738 943 011	1.244	125	48	103	140



**COOL-FIT 4.0 Adaptor fitting PE/stainless steel
With female thread NPT**

Model:

- Spigot fitting PE100 SDR11, ANSI with free end
- Stainless steel 1.4404 / 316L with female thread NPT
- Gasket: O-ring EPDM
- Including Insulation half shells



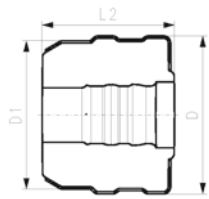
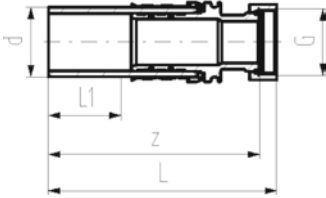
d (mm)	D (mm)	Thread Type	Size (inch)	DN (mm)	SDR	PN (bar)	Code	Weight (kg)	D1 (mm)	L1 (mm)	L2 (mm)	z (mm)
32	104	NPT	½	25	11	16	738 943 408	0.247	90	36	101	114
32	104	NPT	¾	25	11	16	738 943 418	0.272	90	36	101	114
32	104	NPT	1	25	11	16	738 943 428	0.297	90	36	101	114
40	128	NPT	1 ¼	32	11	16	738 943 409	0.683	110	40	91	125
50	138	NPT	1 ½	40	11	16	738 943 410	0.735	110	44	96	124
63	149	NPT	2	50	11	16	738 943 411	1.245	125	48	103	136



COOL-FIT 4.0 Adaptor fitting PE/stainless steel With loose union nut G

Model:

- Spigot fitting PE100 SDR11, metric with free end
- Stainless steel 1.4404 / 316L with loose union nut G
- Including flat seal EPDM
- Including insulation half shells



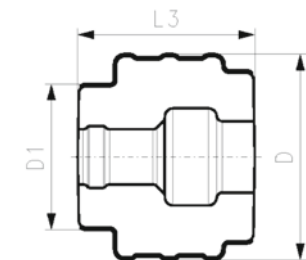
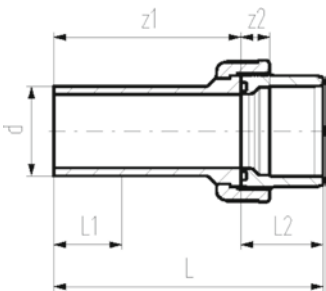
d (mm)	D (mm)	Thread Type	Size (inch)	DN (mm)	SDR	PN (bar)	Code	Weight (kg)
32	104	G	1/2	25	11	16	738 943 308	0.250
32	104	G	3/4	25	11	16	738 943 318	0.264
32	104	G	1	25	11	16	738 943 328	0.296
40	128	G	1 1/4	32	11	16	738 943 309	0.595
40	128	G	1 1/2	32	11	16	738 943 319	0.655
50	138	G	1 1/2	40	11	16	738 943 310	0.820
63	149	G	2	50	11	16	738 943 311	1.307

D1 (mm)	L (mm)	L1 (mm)	L2 (mm)	z (mm)
90	133	36	101	126
90	135	36	101	129
90	135	36	101	129
110	155	40	91	148
110	157	40	91	148
110	164	44	96	154
125	186	48	103	170

COOL-FIT 4.0 Adaptor union PE/ABS

Model:

- Union bush: ABS Solvent cement socket
- Union End: Spigot fitting PE100 SDR11, metric with free end
- Gasket: O-ring EPDM Nr. 748 410 008-014
- Union Nut: ABS
- Including insulation half shells



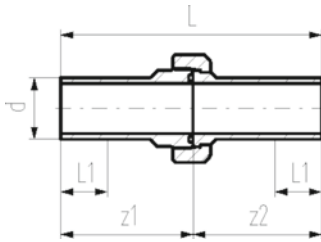
d (mm)	D (mm)	DN (mm)	SDR	PN (bar)	Code	Weight (kg)	D1 (mm)	L (mm)	L1 (mm)	L2 (mm)	L3 (mm)	z1 (mm)	z2 (mm)
32	134	25	11	10	738 513 708	0.169	90	137	36	33	109	104	11
40	143	32	11	10	738 513 709	0.256	110	156	40	39	126	117	13
50	154	40	11	10	738 513 710	0.334	110	169	44	46	135	123	15
63	172	50	11	10	738 513 711	0.522	125	190	48	58	152	132	21
75	210	65	11	10	738 513 712	0.996	140	211	55	62	170	149	18
90	233	80	11	10	738 513 713	1.336	160	215	62	69	167	146	18
110	263	100	11	10	738 513 714	1.900	180	235	72	72	177	163	11



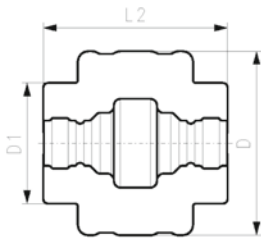
COOL-FIT 4.0 Union PE/PE

Model:

- Union bush: Spigot fitting PE100 SDR11, metric with free end
- Union End: Spigot fitting PE100 SDR11, metric with free end
- Gasket: O-ring EPDM Nr. 748 410 008-014
- Union Nut: PEGF25
- Including insulation half shells



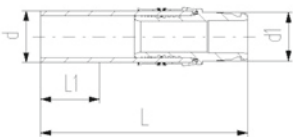
d (mm)	D (mm)	DN (mm)	SDR	PN (bar)	Code	Weight (kg)	D1 (mm)	L (mm)	L1 (mm)	L2 (mm)	z1 (mm)	z2 (mm)
32	139	25	11	16	738 513 608	0.223	90	211	36	139	107	104
40	153	32	11	16	738 513 609	0.363	110	234	40	158	118	116
50	165	40	11	16	738 513 610	0.468	110	247	44	163	124	123
63	185	50	11	16	738 513 611	0.584	125	268	48	176	136	132



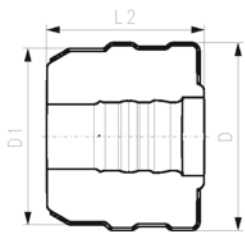
COOL-FIT 4.0 Adaptor fitting PE/iFIT

Model:

- Spigot fitting PE100 SDR11, metric with free end
- iFIT module stainless steel 1.4404 / 316L
- Including insulation half shells



d (mm)	D (mm)	DN (mm)	SDR	PN (bar)	Code	Weight (kg)	d1 (mm)	D1 (mm)	L (mm)	L1 (mm)	L2 (mm)
32	103	25	11	10	738 943 108	0.256	25-32	90	132	36	80

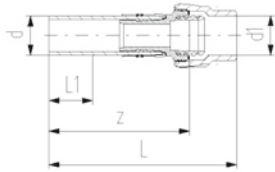




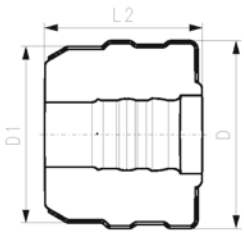
COOL-FIT 4.0 Adaptor fitting PE/Sanipex MT

Model:

- Spigot fitting PE100 SDR11, metric with free end
- Sanipex MT adaptor brass CuZn40Pb2
- Including insulation half shells



d	D	DN	SDR	PN	Code	Weight	d1	D1	L	L1	L2	z
(mm)	(mm)	(mm)		(bar)		(kg)	(mm)	(mm)	(mm)	(mm)	(mm)	(mm)
32	103	25	11	10	738 953 118	0.476	32	90	174	36	101	135

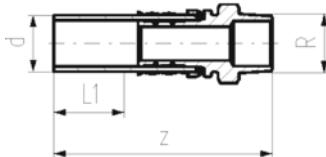


COOL-FIT 2.0/4.0 Adaptor fitting PE/stainless steel With male thread R



Model:

- Spigot fitting PE100 SDR11, metric with free end
- Stainless steel 1.4404 / 316L with male thread R
- Gasket: O-ring EPDM



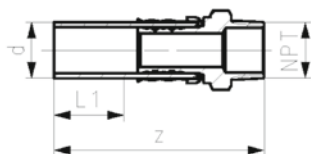
d	Thread Type	Size	DN	SDR	PN	Code	Weight	L1	z
(mm)		(inch)	(mm)		(bar)		(kg)	(mm)	(mm)
32	R	½	25	11	16	738 940 508	0.179	36	130
32	R	¾	25	11	16	738 940 518	0.187	36	134
32	R	1	25	11	16	738 940 528	0.196	36	134
40	R	1 ¼	32	11	16	738 940 509	0.572	40	156
50	R	1 ½	40	11	16	738 940 510	0.927	44	168
63	R	2	50	11	16	738 940 511	1.347	48	179

COOL-FIT 4.0 Adaptor fitting PE/stainless steel with male thread NPT



Model:

- Spigot fitting PE100 SDR11, ANSI with free end
- Stainless steel 1.4404 / 316L with male thread NPT
- Gasket: O-ring EPDM



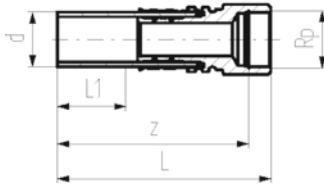
d	Thread Type	Size	SDR	PN	Code	Weight	L	L1	z
(mm)		(inch)		(bar)		(kg)	(mm)	(mm)	(mm)
32	NPT	½	11	16	738 940 808	0.179	132	36	118
32	NPT	¾	11	16	738 940 818	0.187	132	36	116
32	NPT	1	11	16	738 940 828	0.196	132	36	115
40	NPT	1 ¼	11	16	738 940 809	0.572	157	40	141
50	NPT	1 ½	11	16	738 940 810	0.927	150	44	128
63	NPT	2	11	16	738 940 811	1.347	164	48	140

**COOL-FIT 2.0/4.0 Adaptor fitting PE/stainless steel
With female thread Rp**



Model:

- Spigot fitting PE100 SDR11, metric with free end
- Stainless steel 1.4404 / 316L with female thread Rp
- Gasket: O-ring EPDM



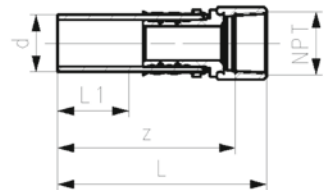
d (mm)	Thread Type	Size (inch)	DN (mm)	SDR	PN (bar)	Code	Weight (kg)	L (mm)	L1 (mm)	z (mm)
32	Rp	½	25	11	16	738 940 008	0.183	132	36	118
32	Rp	¾	25	11	16	738 940 018	0.208	132	36	116
32	Rp	1	25	11	16	738 940 028	0.233	132	36	115
40	Rp	1 ¼	32	11	16	738 940 009	0.600	157	40	141
50	Rp	1 ½	40	11	16	738 940 010	0.641	150	44	128
63	Rp	2	50	11	16	738 940 011	1.133	164	48	140

**COOL-FIT 2.0/4.0 Adaptor fitting PE/stainless steel
With female thread NPT**



Model:

- Spigot fitting PE100 SDR11, ANSI with free end
- Stainless steel 1.4404 / 316L with female thread NPT
- Gasket: O-ring EPDM



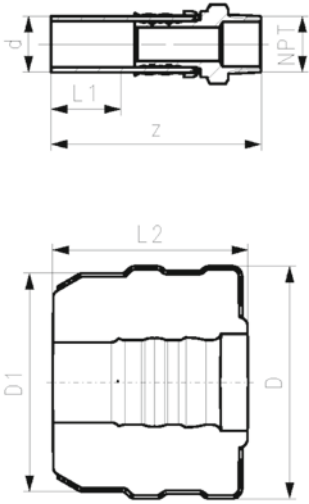
d (mm)	Thread Type	Size (inch)	DN (mm)	SDR	PN (bar)	Code	Weight (kg)	L (mm)	L1 (mm)	z (mm)
32	NPT	½	25	11	16	738 940 408	0.183	132	36	114
32	NPT	¾	25	11	16	738 940 418	0.208	132	36	114
32	NPT	1	25	11	16	738 940 428	0.233	132	36	114
40	NPT	1 ¼	32	11	16	738 940 409	0.600	147	40	125
50	NPT	1 ½	40	11	16	738 940 410	0.641	147	44	124
63	NPT	2	50	11	16	738 940 411	1.133	159	48	136



COOL-FIT 4.0 Adaptor fitting
PE/stainless steel
with male thread NPT

Model:

- Spigot fitting PE100 SDR11, ANSI with free end
- Stainless steel 1.4404 / 316L with male thread NPT
- Gasket: O-ring EPDM
- Including insulation half shells



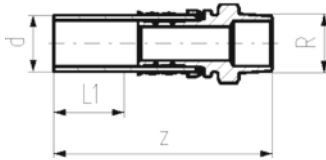
d (mm)	D (mm)	Thread Type	Size (inch)	SDR	PN (bar)	Code	Weight (kg)	D1 (mm)	L1 (mm)	L2 (mm)	z (mm)
32	103	NPT	½	11	16	738 943 808	0.224	90	36	80	129
32	103	NPT	¾	11	16	738 943 818	0.232	90	36	80	133
32	103	NPT	1	11	16	738 943 828	0.241	90	36	80	134
40	128	NPT	1 ¼	11	16	738 943 809	0.655	110	40	91	151
50	138	NPT	1 ½	11	16	738 943 810	1.021	110	44	96	163
63	149	NPT	2	11	16	738 943 811	1.459	125	48	103	174

COOL-FIT 2.0/4.0 Adaptor fitting PE/brass
With male thread R



Model:

- Spigot fitting PE100 SDR11, metric with free end
- Brass CuZn40Pb2 with male thread R
- Gasket: O-ring EPDM



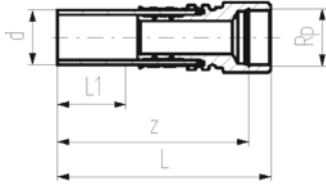
d (mm)	Thread Type	Size (inch)	DN (mm)	SDR	PN (bar)	Code	Weight (kg)	L1 (mm)	z (mm)
32	R	½	25	11	16	738 950 508	0.188	36	130
32	R	¾	25	11	16	738 950 518	0.196	36	134
32	R	1	25	11	16	738 950 528	0.206	36	134
40	R	1 ¼	32	11	16	738 950 519	0.608	40	156
50	R	1 ½	40	11	16	738 950 510	0.986	44	168
63	R	2	50	11	16	738 950 511	1.433	48	179

**COOL-FIT 2.0/4.0 Adaptor fitting PE/brass
With female thread Rp**



Model:

- Spigot fitting PE100 SDR11, metric with free end
- Brass CuZn40Pb2 with female tread Rp
- Gasket: O-ring EPDM



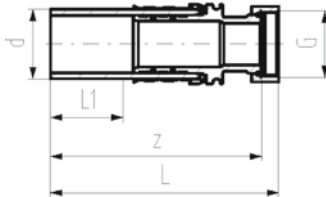
d (mm)	Thread Type	Size (inch)	DN (mm)	SDR	PN (bar)	Code	Weight (kg)	L (mm)	L1 (mm)	z (mm)
32	Rp	½	25	11	16	738 950 008	0.192	132	36	118
32	Rp	¾	25	11	16	738 950 018	0.219	132	36	116
32	Rp	1	25	11	16	738 950 028	0.246	132	36	115
40	Rp	1 ¼	32	11	16	738 950 019	0.641	157	40	141
50	Rp	1 ½	40	11	16	738 950 010	0.684	150	44	128
63	Rp	2	50	11	16	738 950 011	1.209	164	48	140

**COOL-FIT 2.0/4.0 Adaptor fitting PE/brass
With loose union nut G**



Model:

- Spigot fitting PE100 SDR11, metric with free end
- Brass CuZn40Pb2 with loose union nut G
- Including flat seal EPDM



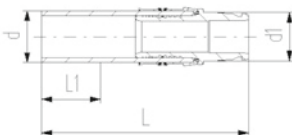
d (mm)	Thread Type	Size (inch)	DN (mm)	SDR	PN (bar)	Code	Weight (kg)	L (mm)	L1 (mm)	z (mm)
32	G	¾	25	11	16	738 950 318	0.206	135	36	129
32	G	1	25	11	16	738 950 328	0.244	135	36	129
32	G	1 ¼	25	11	16	738 950 338	0.301	137	36	131
40	G	1 ¼	32	11	16	738 950 309	0.543	155	40	148
40	G	1 ½	32	11	16	738 950 319	0.607	157	40	148
50	G	1 ½	40	11	16	738 950 310	0.769	164	44	154
63	G	2	50	11	16	738 950 311	1.268	186	48	170

COOL-FIT 2.0/4.0 Adaptor Fitting PE/iFIT



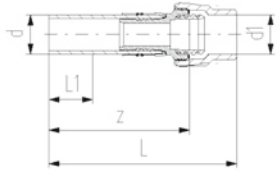
Model:

- Spigot fitting PE100 SDR11, metric with free end
- iFIT module stainless steel 1.4404 / 316L



d (mm)	DN (mm)	SDR	PN (bar)	Code	Weight (kg)	L (mm)	L1 (mm)	L2 (mm)
32	25	11	10	738 940 108	0.211	132	36	80

COOL-FIT 2.0/4.0 Adaptor fitting PE/Sanipex MT

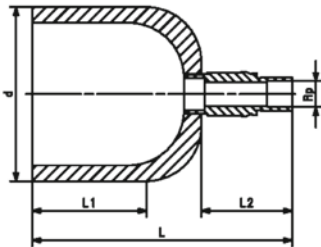


Model:

- Spigot fitting PE100 SDR11, metric with free end
- Sanipex MT adaptor brass CuZn40Pb2

d	DN	SDR	PN	Code	Weight	d1	L	L1	L2	z
(mm)	(mm)		(bar)		(kg)	(mm)	(mm)	(mm)	(mm)	(mm)
32	25	11	10	738 950 118	0.412	32	174	36	101	135

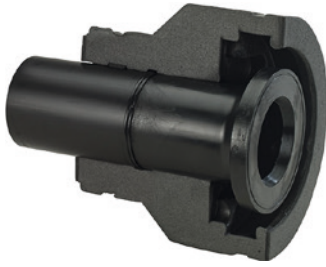
COOL-FIT 2.0/4.0 Transition cap PE/brass With female thread Rp



Model:

- Spigot fitting PE100 SDR11, metric with free end
- Brass CuZn40Pb2 with female tread Rp
- Gasket: O-ring EPDM

d	DN	SDR	PN	Code	Weight	Thread	Size	L	L1	L2
(mm)	(mm)		(bar)		(kg)		(mm)	(mm)	(mm)	(mm)
32	25	11	16	738 960 008	0.192	Rp	1/2"	107	36	69
40	32	11	16	738 960 009	0.193	Rp	1/2"	113	40	73
50	40	11	16	738 960 010	0.198	Rp	1/2"	117	44	73
63	50	11	16	738 960 011	0.203	Rp	1/2"	121	48	73
75	65	11	16	738 960 012	0.361	Rp	1/2"	128	55	73
90	80	11	16	738 960 013	0.476	Rp	1/2"	135	62	73
110	100	11	16	738 960 014	0.695	Rp	1/2"	145	72	73
140	125	11	16	738 960 016	0.954	Rp	1/2"	209	84	73
160	150	11	16	738 960 017	1.138	Rp	1/2"	193	90	73
225	200	11	16	738 960 020	2.532	Rp	1/2"	221	110	73



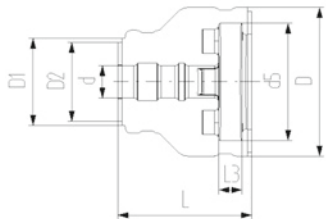
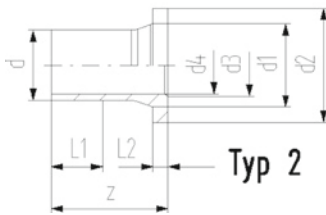
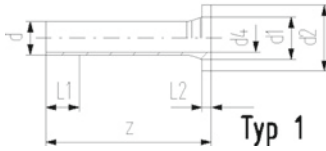
COOL-FIT 2.0/4.0 Flange adaptor

Model:

- PE100 SDR11, metric
- Suitable for flange connections to metric and/or ANSI/ASME B16.5
- Gasket: Profile flange gasket NBR No. 45 44 07, EPDM No. 48 44 07
- Type 1 without chamfer, Type 2 with chamfer
- Separate Fittings type A needed for joining

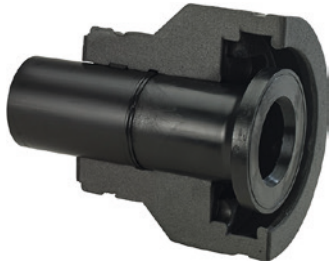
Note:

Backing ring and gasket not included



d (mm)	D (mm)	d1 (mm)	D1 (mm)	d2 (mm)	D2 (mm)	DN (mm)	SDR	PN	Code	Weight (kg)
32	135	40	90	68		25	11	16	738 710 008	0.051
32	135	40	90	63	63	25	11	16	738 710 108	0.051
40	170	50	110	78	90	32	11	16	738 710 009	0.075
40	170	50	110	73	73	32	11	16	738 710 109	0.075
50	180	61	110	88	90	40	11	16	738 710 010	0.630
50	180	61	110	82	82	40	11	16	738 710 110	0.110
63	200	75	125	102	110	50	11	16	738 710 011	0.173
75	220	89	140	122	125	65	11	16	738 710 012	1.210
90	240	105	160	138	140	80	11	16	738 710 013	1.193
90	240	105	160	133	133	80	11	16	738 710 113	0.439
110	270	125	180	158	160	100	11	16	738 710 014	1.574
140	300	155	225	188	200	125	11	16	738 710 016	2.412
160	358	174	259	213	213	150	11	16	738 710 017	1.748
225	423	233	325	268	268	200	11	16	738 710 020	10.440

d (mm)	L (mm)	L1 (mm)	L2 (mm)	L3 (mm)	z (mm)	d3 (mm)	d4 (mm)	d5 (mm)	Type	Standard
32	162	36	10	26	190		26	121	1	Metric
32	162	36	10	26	190		26	121	1	ANSI
40	165	40	11	28	197		32	146	1	Metric
40	165	40	11	28	197		32	146	1	ANSI
50	178	44	12	30	214		40	156	1	Metric
50	178	44	12	30	214		40	156	1	ANSI
63	230	48	14	32	270		51	171	1	Metric, ANSI
75	232	55	16	34	279		61	191	2	Metric, ANSI
90	245	62	17	35	299	78	73	206	2	Metric
90	245	62	17	35	299	78	73	206	2	ANSI
110	254	72	18	36	320	100	90	235	2	Metric, ANSI
140	299	84	25	38	383	127	127	256	2	Metric, ANSI
160	332	90	25	34	412	151	131	295	2	Metric, ANSI
225	383	110	32	37	483	209	184	354	2	Metric, ANSI



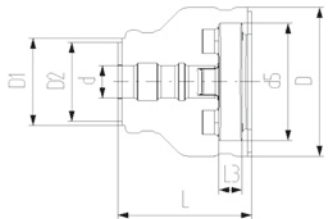
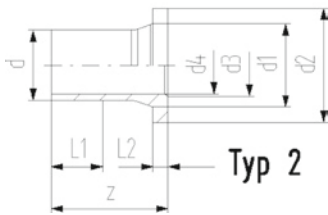
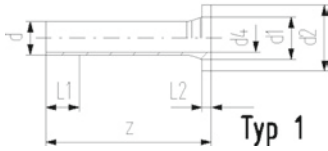
COOL-FIT 2.0/4.0 Flange adaptor

Model:

- PE100 SDR11, metric
- Suitable for flange connections to metric and/or ANSI/ASME B16.5
- Gasket: Profile flange gasket NBR No. 45 44 07, EPDM No. 48 44 07
- Type 1 without chamfer, Type 2 with chamfer
- Separate Fittings type A needed for joining

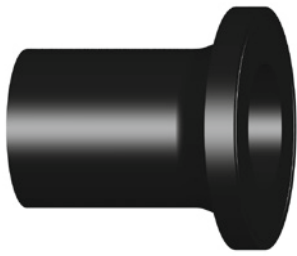
Note:

Backing ring and gasket not included



d (mm)	D (mm)	d1 (mm)	D1 (mm)	d2 (mm)	D2 (mm)	DN (mm)	SDR	PN	Code	Weight (kg)
32	135	40	90	68		25	11	16	738 710 008	0.051
32	135	40	90	63	63	25	11	16	738 710 108	0.051
40	170	50	110	78	90	32	11	16	738 710 009	0.075
40	170	50	110	73	73	32	11	16	738 710 109	0.075
50	180	61	110	88	90	40	11	16	738 710 010	0.630
50	180	61	110	82	82	40	11	16	738 710 110	0.110
63	200	75	125	102	110	50	11	16	738 710 011	0.173
75	220	89	140	122	125	65	11	16	738 710 012	1.210
90	240	105	160	138	140	80	11	16	738 710 013	1.193
90	240	105	160	133	133	80	11	16	738 710 113	0.439
110	270	125	180	158	160	100	11	16	738 710 014	1.574
140	300	155	225	188	200	125	11	16	738 710 016	2.412
160	358	174	259	213	213	150	11	16	738 710 017	1.748
225	423	233	325	268	268	200	11	16	738 710 020	10.440

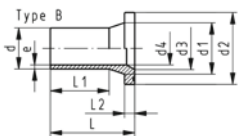
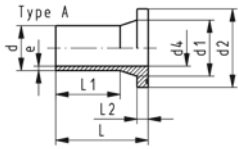
d (mm)	L (mm)	L1 (mm)	L2 (mm)	L3 (mm)	z (mm)	d3 (mm)	d4 (mm)	d5 (mm)	Type	Standard
32	162	36	10	26	190		26	121	1	Metric
32	162	36	10	26	190		26	121	1	ANSI
40	165	40	11	28	197		32	146	1	Metric
40	165	40	11	28	197		32	146	1	ANSI
50	178	44	12	30	214		40	156	1	Metric
50	178	44	12	30	214		40	156	1	ANSI
63	230	48	14	32	270		51	171	1	Metric, ANSI
75	232	55	16	34	279		61	191	2	Metric, ANSI
90	245	62	17	35	299	78	73	206	2	Metric
90	245	62	17	35	299	78	73	206	2	ANSI
110	254	72	18	36	320	100	90	235	2	Metric, ANSI
140	299	84	25	38	383	127	127	256	2	Metric, ANSI
160	332	90	25	34	412	151	131	295	2	Metric, ANSI
225	383	110	32	37	483	209	184	354	2	Metric, ANSI



ELGEF Plus Flange adaptor PE100
d50 - 1000mm / SDR17 / long version / Combined jointing face: flat and serrated

Model:

- For IR, butt and electrofusion welding according to DVS 2207
 - Type A: without chamfer
 - Type B: with chamfer
 - Suitable for plastic butterfly valves type **567/578/565** up to DN250. ecoFit Flange adaptor SDR17 required for DN300 and above
 - Suitable for metal butterfly valves type **038/039/044/065** up to DN250. ecoFit Flange adaptor SDR17 is required for DN300 and above
 - Profile seal d50-d1000: NBR, EPDM, FKM
 - Flat gasket d50-d315: EPDM, FKM
 - Pressure rating: 10 bar water / 5 bar gas
 - Please refer to the Online Tool: Perfect Flange Connection - GF Piping Systems (gfps.com)
- * Machined / extended



d (mm)	DN (mm)	Code	Weight (kg)	d1 (mm)	d2 (mm)	d3 (mm)	d4 (mm)	L (mm)	L1 (mm)	L2 (mm)	e (mm)	Type
50	40	753 800 085	0.107	61	88		44	90	62	12	3.0	A
63	50	753 800 086	0.168	75	102		55	106	70	14	3.8	A
75	65	753 800 087	0.260	89	122		66	130	75	16	4.5	A
90	80	753 800 088	0.367	105	138		79	140	103	17	5.4	A
110	100	753 800 089	0.571	125	158		96	160	117	18	6.6	A
125	100	753 800 090	0.684	132	158	114	110	170	125	25	7.4	B
140	125	753 800 091	1.035	155	188	127	123	200	147	25	8.3	B
160	150	753 800 092	1.342	175	212	151	141	200	147	25	9.5	B
180	150	753 800 093	1.469	180	212		158	200	170	30	10.7	A
200	200	753 800 094	2.212	232	268	203	176	200	128	32	11.9	B
225	200	753 800 095	2.456	235	268	210	198	200	138	32	13.4	B
250	250	753 800 096	3.500	285	320	245	220	220	148	35	14.8	B
280	250	753 800 097	3.780	291	320	265	246	230	154	35	16.6	B
315	300	753 800 098	5.470	335	370	300	277	242	166	36	18.7	B
355	350	753 800 299	7.100	373	430	346	310	260	170	33	21.1	B
400	400	753 800 300	9.600	427	482	395	350	282	185	36	23.7	B
450	500	753 800 301	16.400	514	585		400	316	205	46	26.7	A
500	500	753 800 302	18.500	530	585		400	337	220	46	29.7	A
560	600	753 800 303	26.940	616	685		493	370	250	50	33.2	A
630	600	753 800 304	44.260	644	685		555	390	270	50	37.4	A
*	710	753 800 105	39.376	737	800		626	425	325	50	42.1	A
*	800	753 800 106	50.759	840	905		705	465	360	52	47.4	A
*	900	753 800 107	64.202	944	1005		793	490	360	55	53.3	A
*	1000	753 800 108	79.495	1047	1110		881	530	395	60	59.3	A



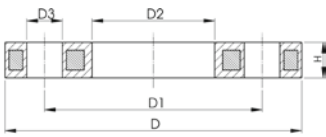
Flanges PP-Steel

Model:

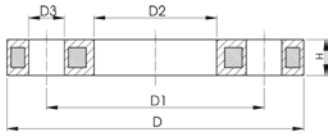
- Material: PP (30% glass-fibre reinforced) with steel ring
- Metric: ISO 7005, EN 1092, ISO 9624
- ASME: ANSI/ASME B 16.5 class 150, ASTM D2024, BS 1560, BS EN 1759
- Special flange adapter ANSI for d25 - d50 and d90 required

AL: number of holes

¹⁾ FM 1613 approved – 15 bar

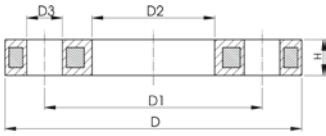


	d (mm)	DN (mm)	D (mm)	PN (bar)	Standard	Bolt / circle	Design	Code	Weight (kg)
	20	15	95	16	Metric	PN10	Butt/Socket	727 700 206	0.216
	20	15	95	16	ASME	class 150	Butt/Socket	727 701 206	0.213
	25	20	105	16	Metric	PN10	Butt/Socket	727 700 207	0.279
	25	20	105	16	ASME	class 150	Butt/Socket	727 701 207	0.260
	32	25	115	16	Metric	PN10	Butt/Socket	727 700 208	0.429
	32	25	115	16	ASME	class 150	Butt/Socket	727 701 208	0.416
	40	32	140	16	Metric	PN10	Butt/Socket	727 700 209	0.621
	40	32	140	16	ASME	class 150	Butt/Socket	727 701 209	0.730
	50	40	150	16	Metric	PN10	Butt/Socket	727 700 210	0.722
	50	40	150	16	ASME	class 150	Butt/Socket	727 701 210	0.809
	63	50	165	16	Metric	PN10	Butt/Socket	727 700 211	0.900
	63	50	165	16	ASME	class 150	Butt/Socket	727 701 211	0.866
	75	65	185	16	Metric	PN10	Butt/Socket	727 700 212	1.110
	75	65	185	16	ASME	class 150	Butt/Socket	727 701 212	1.117
1	90	80	200	16	Metric	PN10	Butt	724 700 313	1.390
	90	80	200	16	Metric	PN10	Socket	727 700 213	1.369
	90	80	200	16	Metric	PN10	Butt	727 700 313	1.390
	90	80	200	16	ASME	class 150	Socket	727 701 213	1.492
	90	80	200	16	ASME	class 150	Butt	727 701 313	1.499
1	110	100	223	16	Metric	PN10	Butt	724 700 314	1.407
	110	100	220	16	Metric	PN10	Socket	727 700 214	1.522
	110	100	220	16	Metric	PN10	Butt	727 700 314	1.407
	110	100	229	16	ASME	class 150	Socket	727 701 214	1.695
	110	100	229	16	ASME	class 150	Butt	727 701 314	1.739
1	125	125	223	16	Metric	PN10	Butt	724 700 315	1.408
	125	125	220	16	Metric	PN10	Butt	727 700 315	1.408
	125	125	250	16	Metric	PN10	Socket	727 700 815	2.475
1	140	125	250	16	Metric	PN10	Butt	724 700 316	2.300
	140	125	250	16	Metric	PN10	Butt	727 700 716	2.318
	140	125	250	16	Metric	PN10	Socket	727 700 816	2.033
1	160	150	285	16	Metric	PN10	Butt	724 700 317	3.500
	160	150	285	16	Metric/ASME	PN10/ class 150	Butt	727 700 717	3.491
	160	150	285	16	Metric/ASME	PN10/ class 150	Socket	727 700 817	3.167
1	180	150	285	16	Metric	PN10	Butt	724 700 318	3.100
	180	150	285	16	Metric	PN10	Butt	727 700 718	3.108
1	200	200	344	16	Metric	PN16	Butt	724 700 319	3.549
	200	200	340	16	Metric/ASME	PN10/ class 150	Butt	727 700 719	5.600
	200	200	340	16	Metric/ASME	PN10/ class 150	Socket	727 700 819	6.143
1	225	200	344	16	Metric	PN16	Butt	724 700 320	3.380
	225	200	340	16	Metric/ASME	PN10/ class 150	Butt	727 700 720	5.533
	225	200	340	16	Metric/ASME	PN10/ class 150	Socket	727 700 820	4.448
1	250	250	410	16	Metric	PN16	Butt	724 700 321	6.390
	250	225	395	16	Metric	PN10	Socket	727 700 031	8.340
	250	250	395	16	Metric	PN10	Butt	727 700 721	6.632
	250	250	395	16	Metric	PN10	Socket	727 700 821	7.179
1	280	250	410	16	Metric	PN16	Butt	724 700 322	6.310
	280	250	395	16	Metric	PN10	Butt	727 700 722	6.573
	280	250	395	16	Metric	PN10	Socket	727 700 822	5.547
1	315	300	455	16	Metric	PN16	Butt	724 700 323	9.740
	315	300	445	16	Metric	PN10	Butt	727 700 723	7.903



	d (mm)	DN (mm)	D (mm)	PN (bar)	Standard	Bolt / circle	Design	Code	Weight (kg)
	315	300	445	16	Metric	PN10	Socket	727 700 823	6.980
	315	300	483	10	ASME	class 150	Butt	727 701 322	11.800
1	355	350	521	16	Metric	PN16	Butt	724 700 324	15.203
	355	350	515	16	Metric	PN10	Butt	727 700 724	14.587
	355	350	515	16	Metric	PN10	Socket	727 700 824	12.465
	355	350	540	10	ASME	class 150	Butt	727 701 323	17.900
1	400	400	582	16	Metric	PN16	Butt	724 700 325	20.600
	400	400	574	16	Metric	PN10	Butt	727 700 725	20.034
	400	400	574	16	Metric	PN10	Socket	727 700 825	17.607
	400	400	597	10	ASME	class 150	Butt	727 701 324	24.500
1	450	500	685	10	Metric	PN10	Butt	724 700 426	25.600
1	500	500	685	10	Metric	PN10	Butt	724 700 427	21.061
	560	600	796	10	Metric	PN10	Butt	724 700 428	35.000
	630	600	800	10	Metric	PN10	Butt	724 700 429	28.500
	710	700	912	6	Metric	PN10	Butt	724 700 430	25.500
	800	800	1026	6	Metric	PN10	Butt	724 700 431	39.300
	900	900	1129	6	Metric	PN10	Butt	724 700 432	48.500
	250	250	406	10	ASME	class 150	Butt	727 701 321	6.000
	450	500	712	10	ASME	class 150	Butt	727 701 325	33.600

	d (mm)	D1 (mm)	D2 (mm)	D3 (mm)	H max. (mm)	AL	SC
	20	65	28	14	12	4	M12
	20	60	28	16	12	4	M12
	25	75	34	14	12	4	M12
	25	70	34	16	12	4	M12
	32	85	42	14	16	4	M12
	32	79	42	16	16	4	M12
	40	100	51	18	16	4	M16
	40	89	51	16	16	4	M16
	50	110	62	18	20	4	M16
	50	98	62	16	18	4	M16
	63	125	78	18	20	4	M16
	63	121	78	19	18	4	M16
	75	145	92	18	20	4	M16
	75	140	92	19	18	4	M16
1	90	160	108	18	20	8	M16
	90	160	110	18	20	8	M16
	90	160	108	18	20	8	M16
	90	152	110	19	20	4	M16
	90	152	108	19	20	4	M16
1	110	180	128	18	20	8	M16
	110	180	133	18	20	8	M16
	110	180	128	18	20	8	M16
	110	190	133	19	20	8	M16
	110	190	128	19	20	8	M16
1	125	180	135	18	20	8	M16
	125	180	135	18	20	8	M16
	125	210	150	18	26	8	M16
1	140	210	158	18	24	8	M16
	140	210	158	18	24	8	M16
	140	210	167	18	26	8	M16
1	160	240	178	22	28	8	M20
	160	240	178	22	24	8	M20
	160	240	190	22	26	8	M20
1	180	240	188	22	28	8	M20
	180	240	188	22	24	8	M20
1	200	295	235	22	31	12	M20
	200	295	235	22	27	8	M20
	200	295	226	22	29	8	M20
1	225	295	238	22	31	12	M20
	225	295	238	22	27	8	M20
	225	295	250	22	29	8	M20



	d (mm)	D1 (mm)	D2 (mm)	D3 (mm)	H max. (mm)	AL	SC
1	250	355	288	26	35	12	M24
	250	325	277	22	32	8	M20
	250	350	288	22	30	12	M20
	250	350	277	22	32	12	M20
1	280	355	294	26	36	12	M24
	280	350	294	22	30	12	M20
	280	350	310	22	32	12	M20
1	315	410	338	26	43	12	M24
	315	400	338	22	34	12	M20
	315	400	348	22	36	12	M20
	315	432	338	25	34	12	M24
1	355	470	376	26	55	16	M24
	355	460	376	23	40	16	M20
	355	460	388	23	42	16	M20
	355	476	376	29	42	12	M27
1	400	525	430	30	56	28	M27
	400	515	430	26	40	16	M24
	400	515	442	26	42	16	M24
	400	539	429	29	44	16	M27
1	450	620	517	26	56	20	M24
1	500	620	533	26	56	20	M24
	560	725	618	30	68	20	M27
	630	725	645	30	68	20	M27
	710	840	740	30	49	24	M27
	800	950	843	33	58	24	M30
	900	1050	947	33	62	28	M30
	250	362	293	25	30	12	M24
	450	635	540	32	53	20	M30



Profiled Backing Flanges Metal, Epoxy coated

Model:

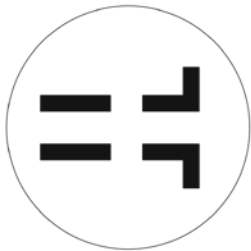
- Ductile iron (GGG 40), stoved epoxy (black, DIN30677)
- Metric: ISO 7005, EN 1092, ISO 9624

Note:

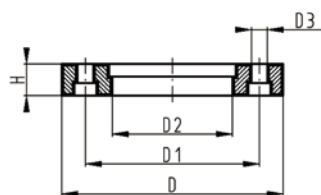
Flat side = bolt / washer side

Profiled side = flange adaptor side (aligned with collar)

AL: number of holes



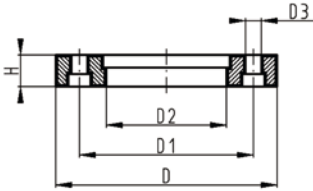
d (mm)	DN (mm)	PN (bar)	Standard	Bolt / circle	Design	Code	Weight (kg)
125	125	16	Metric	PN10	Butt	701 474 386	6.000
450	450	10	Metric	PN10	Butt	724 705 026	38.000
450	500	10	Metric	PN16	Butt	724 705 326	50.500
500	500	10	Metric	PN16	Butt	724 705 327	50.500
560	600	10	Metric	PN16	Butt	724 705 328	50.500
630	600	10	Metric	PN16	Butt	724 705 329	50.500
710	700	6	Metric	PN10	Butt	724 705 130	36.400
800	800	6	Metric	PN10	Butt	724 705 131	50.500
900	900	6	Metric	PN10	Butt	724 705 132	55.800
1000	1000	6	Metric	PN10	Butt	724 705 133	71.100
1200	1200	6	Metric	PN10	Butt	724 705 134	101.000



D (mm)	D1 (mm)	D2 (mm)	D3 (mm)	H (mm)	AL	SC
250	210	135	18	25	8	M16
615	565	470	26	36	20	M24
715	650	517	33	46	20	M30
715	650	533	33	46	20	M30
840	770	618	36	55	20	M33



D	D1	D2	D3	H	AL	SC
(mm)	(mm)	(mm)	(mm)	(mm)		
840	770	645	36	55	20	M33
900	840	740	30	45	24	M27
1015	950	843	33	53	24	M30
1115	1050	947	33	56	28	M30
1230	1160	1050	36	62	28	M33
1455	1380	1260	39	68	32	M36



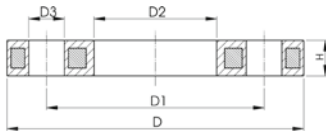
Flanges PP-Steel

Model:

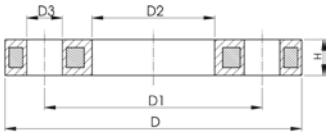
- Material: PP (30% glass-fibre reinforced) with steel ring
- Metric: ISO 7005, EN 1092, ISO 9624
- ASME: ANSI/ASME B 16.5 class 150, ASTM D2024, BS 1560, BS EN 1759
- Special flange adapter ANSI for d25 - d50 and d90 required

AL: number of holes

¹⁾ FM 1613 approved – 15 bar

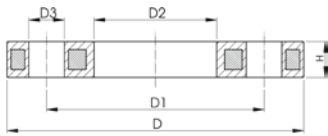


	d	DN	D	PN	Standard	Bolt / circle	Design	Code	Weight
	(mm)	(mm)	(mm)	(bar)					(kg)
	20	15	95	16	Metric	PN10	Butt/Socket	727 700 206	0.216
	20	15	95	16	ASME	class 150	Butt/Socket	727 701 206	0.213
	25	20	105	16	Metric	PN10	Butt/Socket	727 700 207	0.279
	25	20	105	16	ASME	class 150	Butt/Socket	727 701 207	0.260
	32	25	115	16	Metric	PN10	Butt/Socket	727 700 208	0.429
	32	25	115	16	ASME	class 150	Butt/Socket	727 701 208	0.416
	40	32	140	16	Metric	PN10	Butt/Socket	727 700 209	0.621
	40	32	140	16	ASME	class 150	Butt/Socket	727 701 209	0.730
	50	40	150	16	Metric	PN10	Butt/Socket	727 700 210	0.722
	50	40	150	16	ASME	class 150	Butt/Socket	727 701 210	0.809
	63	50	165	16	Metric	PN10	Butt/Socket	727 700 211	0.900
	63	50	165	16	ASME	class 150	Butt/Socket	727 701 211	0.866
	75	65	185	16	Metric	PN10	Butt/Socket	727 700 212	1.110
	75	65	185	16	ASME	class 150	Butt/Socket	727 701 212	1.117
1	90	80	200	16	Metric	PN10	Butt	724 700 313	1.390
	90	80	200	16	Metric	PN10	Socket	727 700 213	1.369
	90	80	200	16	Metric	PN10	Butt	727 700 313	1.390
	90	80	200	16	ASME	class 150	Socket	727 701 213	1.492
	90	80	200	16	ASME	class 150	Butt	727 701 313	1.499
1	110	100	223	16	Metric	PN10	Butt	724 700 314	1.407
	110	100	220	16	Metric	PN10	Socket	727 700 214	1.522
	110	100	220	16	Metric	PN10	Butt	727 700 314	1.407
	110	100	229	16	ASME	class 150	Socket	727 701 214	1.695
	110	100	229	16	ASME	class 150	Butt	727 701 314	1.739
1	125	125	223	16	Metric	PN10	Butt	724 700 315	1.408
	125	125	220	16	Metric	PN10	Butt	727 700 315	1.408
	125	125	250	16	Metric	PN10	Socket	727 700 815	2.475
1	140	125	250	16	Metric	PN10	Butt	724 700 316	2.300
	140	125	250	16	Metric	PN10	Butt	727 700 716	2.318
	140	125	250	16	Metric	PN10	Socket	727 700 816	2.033
1	160	150	285	16	Metric	PN10	Butt	724 700 317	3.500



	d (mm)	DN (mm)	D (mm)	PN (bar)	Standard	Bolt / circle	Design	Code	Weight (kg)
	160	150	285	16	Metric/ASME	PN10/ class 150	Butt	727 700 717	3.491
	160	150	285	16	Metric/ASME	PN10/ class 150	Socket	727 700 817	3.167
1	180	150	285	16	Metric	PN10	Butt	724 700 318	3.100
	180	150	285	16	Metric	PN10	Butt	727 700 718	3.108
1	200	200	344	16	Metric	PN16	Butt	724 700 319	3.549
	200	200	340	16	Metric/ASME	PN10/ class 150	Butt	727 700 719	5.600
	200	200	340	16	Metric/ASME	PN10/ class 150	Socket	727 700 819	6.143
1	225	200	344	16	Metric	PN16	Butt	724 700 320	3.380
	225	200	340	16	Metric/ASME	PN10/ class 150	Butt	727 700 720	5.533
	225	200	340	16	Metric/ASME	PN10/ class 150	Socket	727 700 820	4.448
1	250	250	410	16	Metric	PN16	Butt	724 700 321	6.390
	250	225	395	16	Metric	PN10	Socket	727 700 031	8.340
	250	250	395	16	Metric	PN10	Butt	727 700 721	6.632
	250	250	395	16	Metric	PN10	Socket	727 700 821	7.179
1	280	250	410	16	Metric	PN16	Butt	724 700 322	6.310
	280	250	395	16	Metric	PN10	Butt	727 700 722	6.573
	280	250	395	16	Metric	PN10	Socket	727 700 822	5.547
1	315	300	455	16	Metric	PN16	Butt	724 700 323	9.740
	315	300	445	16	Metric	PN10	Butt	727 700 723	7.903
	315	300	445	16	Metric	PN10	Socket	727 700 823	6.980
	315	300	483	10	ASME	class 150	Butt	727 701 322	11.800
1	355	350	521	16	Metric	PN16	Butt	724 700 324	15.203
	355	350	515	16	Metric	PN10	Butt	727 700 724	14.587
	355	350	515	16	Metric	PN10	Socket	727 700 824	12.465
	355	350	540	10	ASME	class 150	Butt	727 701 323	17.900
1	400	400	582	16	Metric	PN16	Butt	724 700 325	20.600
	400	400	574	16	Metric	PN10	Butt	727 700 725	20.034
	400	400	574	16	Metric	PN10	Socket	727 700 825	17.607
	400	400	597	10	ASME	class 150	Butt	727 701 324	24.500
1	450	500	685	10	Metric	PN10	Butt	724 700 426	25.600
1	500	500	685	10	Metric	PN10	Butt	724 700 427	21.061
	560	600	796	10	Metric	PN10	Butt	724 700 428	35.000
	630	600	800	10	Metric	PN10	Butt	724 700 429	28.500
	710	700	912	6	Metric	PN10	Butt	724 700 430	25.500
	800	800	1026	6	Metric	PN10	Butt	724 700 431	39.300
	900	900	1129	6	Metric	PN10	Butt	724 700 432	48.500
	250	250	406	10	ASME	class 150	Butt	727 701 321	6.000
	450	500	712	10	ASME	class 150	Butt	727 701 325	33.600

	d (mm)	D1 (mm)	D2 (mm)	D3 (mm)	H max. (mm)	AL	SC
	20	65	28	14	12	4	M12
	20	60	28	16	12	4	M12
	25	75	34	14	12	4	M12
	25	70	34	16	12	4	M12
	32	85	42	14	16	4	M12
	32	79	42	16	16	4	M12
	40	100	51	18	16	4	M16
	40	89	51	16	16	4	M16
	50	110	62	18	20	4	M16
	50	98	62	16	18	4	M16
	63	125	78	18	20	4	M16
	63	121	78	19	18	4	M16
	75	145	92	18	20	4	M16
	75	140	92	19	18	4	M16
1	90	160	108	18	20	8	M16
	90	160	110	18	20	8	M16
	90	160	108	18	20	8	M16
	90	152	110	19	20	4	M16
	90	152	108	19	20	4	M16



	d (mm)	D1 (mm)	D2 (mm)	D3 (mm)	H max. (mm)	AL	SC
1	110	180	128	18	20	8	M16
	110	180	133	18	20	8	M16
	110	180	128	18	20	8	M16
	110	190	133	19	20	8	M16
	110	190	128	19	20	8	M16
1	125	180	135	18	20	8	M16
	125	180	135	18	20	8	M16
	125	210	150	18	26	8	M16
1	140	210	158	18	24	8	M16
	140	210	158	18	24	8	M16
	140	210	167	18	26	8	M16
1	160	240	178	22	28	8	M20
	160	240	178	22	24	8	M20
	160	240	190	22	26	8	M20
1	180	240	188	22	28	8	M20
	180	240	188	22	24	8	M20
1	200	295	235	22	31	12	M20
	200	295	235	22	27	8	M20
	200	295	226	22	29	8	M20
1	225	295	238	22	31	12	M20
	225	295	238	22	27	8	M20
	225	295	250	22	29	8	M20
1	250	355	288	26	35	12	M24
	250	325	277	22	32	8	M20
	250	350	288	22	30	12	M20
	250	350	277	22	32	12	M20
1	280	355	294	26	36	12	M24
	280	350	294	22	30	12	M20
	280	350	310	22	32	12	M20
1	315	410	338	26	43	12	M24
	315	400	338	22	34	12	M20
	315	400	348	22	36	12	M20
	315	432	338	25	34	12	M24
1	355	470	376	26	55	16	M24
	355	460	376	23	40	16	M20
	355	460	388	23	42	16	M20
	355	476	376	29	42	12	M27
1	400	525	430	30	56	28	M27
	400	515	430	26	40	16	M24
	400	515	442	26	42	16	M24
	400	539	429	29	44	16	M27
1	450	620	517	26	56	20	M24
1	500	620	533	26	56	20	M24
	560	725	618	30	68	20	M27
	630	725	645	30	68	20	M27
	710	840	740	30	49	24	M27
	800	950	843	33	58	24	M30
	900	1050	947	33	62	28	M30
	250	362	293	25	30	12	M24
	450	635	540	32	53	20	M30



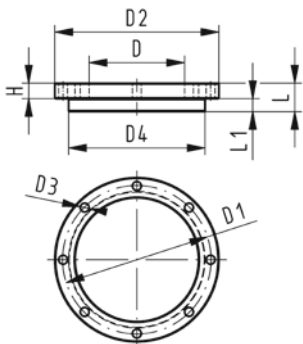
Blanking flange set PE100 Combined jointing face flat and serrated metric

Model:

- d63 - d315: backing flange PP-V with end blank PE
- d355 - d630: backing flange PP/Steel with end blank PE
- Connecting dimensions: ISO 7005, EN 1092, DIN 2501
- **Bolt circle PN 10**

AL: number of holes

L: length of the End Blank



d	DN	PN	Code	Weight	D	D1	D2	D3	D4	L	L1	H	AL	SC
(mm)	(mm)	(bar)		(kg)	(mm)	(mm)	(mm)	(mm)	(mm)	(mm)	(mm)	(mm)		
63	50	16	753 700 611	0.560	75	125	165	18	102	30	14	24	4	M16
75	65	16	753 700 612	0.910	89	145	185	18	122	30	16	26	4	M16
90	80	16	753 700 613	0.921	105	160	200	18	138	30	17	27	8	M16
110	100	16	753 700 614	1.158	125	180	220	18	158	30	18	28	8	M16
125	100	16	753 700 615	1.678	132	180	220	18	158	35	25	28	8	M16
140	125	16	753 700 616	1.913	155	210	250	18	188	40	25	30	8	M16
160	150	16	753 700 617	2.373	175	240	285	22	212	40	25	32	8	M20
180	150	16	753 700 618	2.430	180	240	285	22	212	45	30	32	8	M20
200	200	16	753 700 619	3.495	232	295	340	22	268	50	32	34	8	M20
225	200	16	753 700 620	3.744	235	295	340	22	268	50	32	34	8	M20
250	250	16	753 700 621	6.051	285	350	395	22	320	55	35	38	12	M20
280	250	16	753 700 622	6.305	291	350	395	22	320	60	35	38	12	M20
315	300	16	753 700 623	8.894	335	400	445	22	370	65	35	42	12	M20
355	350	16	753 700 624	23.198	373	460	515	22	430	70	40	40	16	M20
400	400	16	753 700 625	30.766	427	515	574	26	482	75	46	40	16	M24
450	500	10	753 700 626	44.271	510	620	684	26	585	80	60	49	20	M24
500	500	10	753 700 627	47.165	530	620	684	26	585	90	60	49	20	M24
560	600	10	753 700 628	67.147	615	725	796	30	685	100	60	58	20	M27
630	600	10	753 700 629	68.574	642	725	796	30	685	110	60	68	20	M27



Profile Flange Gasket EPDM/FKM metric

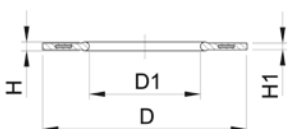
Model:

- For all metric GF Flange Adaptors
- Hardness: 70° Shore EPDM, 75° Shore FKM
- EPDM: approved acc. to DVGW Water W 270, KTW recommendation
- Centering on the inner diameter of the screw crown
- material steel insert: carbon steel
- Rubber-steel body combined with rubber profile cord ring up to d630
- Rubber-steel body ideal for big dimensions (d710 - d1000)

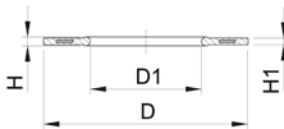
di FA are the suitable inner diameters of flanges adaptors



Design d710 - d1000



d	D	di FA	D1	DN	PN	EPDM Code	FKM Code	Weight	H	H1
(mm)	(mm)	(mm)	(mm)	(mm)	(bar)			(kg)	(mm)	(mm)
16	46	6 - 16	16	10	16	748 440 705	749 440 705	0.012	4	3
20	51	10 - 20	20	15	16	748 440 706	749 440 706	0.013	4	3
25	61	12 - 22	22	20	16	748 440 707	749 440 707	0.014	4	3
32	71	18 - 28	28	25	16	748 440 708	749 440 708	0.019	4	3
40	82	30 - 40	40	32	16	748 440 709	749 440 709	0.026	4	3
50	92	36 - 46	46	40	16	748 440 710	749 440 710	0.039	4	3
63	107	48 - 58	58	50	16	748 440 711	749 440 711	0.050	5	4
75	127	59 - 69	69	65	16	748 440 712	749 440 712	0.082	5	4
90	142	73 - 84	84	80	16	748 440 713	749 440 713	0.083	5	4
110	162	94 - 104	104	100	16	748 440 714	749 440 714	0.127	6	5
125	162	113 - 123	123	100	16	748 440 715	749 440 715	0.105	6	5
140	192	127 - 137	137	125	16	748 440 716	749 440 716	0.173	6	5
160 - 180	218	150 - 160	160	150	16	748 440 717	749 440 717	0.207	8	6
200	273	192 - 203	203	200	16	748 440 719	749 440 719	0.263	8	6
225	273	207 - 220	220	200	16	748 440 720	749 440 720	0.255	8	6
250	328	238 - 252	252	250	16	748 440 721	749 440 721	0.462	8	6



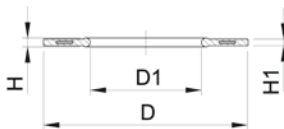
d (mm)	D (mm)	di FA (mm)	D1 (mm)	DN (mm)	PN (bar)	EPDM Code	FKM Code	Weight (kg)	H (mm)	H1 (mm)
280	328	264 - 274	274	250	16	748 440 722	749 440 722	0.323	8	6
315	378	296 - 306	306	300	16	748 440 723	749 440 723	0.549	8	6
355	438	340 - 355	355	350	16	748 440 724	749 440 724	0.870	10	7
400	489	385 - 400	400	400	16	748 440 725	749 440 725	1.088	10	7
450	594	393 - 403	403	500	10	748 440 726	749 440 726	0.718	10	7
500	594	437 - 447	447	500	10	748 440 727	749 440 727	0.718	10	7
560	695	484 - 494	494	600	10	748 440 728	749 440 728	0.923	10	7
630	695	545 - 555	555	600	10	748 440 729	749 440 729	0.923	10	7
710	810	562 - 712	712	700	6	748 440 730		0.890	6	3
800	917	663 - 813	813	800	6	748 440 731		1.340	6	3
900	1017	765 - 915	915	900	6	748 440 732		1.170	6	3
1000	1124	866 - 1016	1016	1000	6	748 440 733		1.360	6	3



Profile Flange Gasket EPDM/FKM ANSI/ASME

Model:

- Suitable for flanges adaptors PP/PE PVDF
- Hardness: 70° Shore EPDM, 75° Shore FKM
- Centered by the flange bolts
- Dimension D is in accordance with the inner diameter of the bolt circle



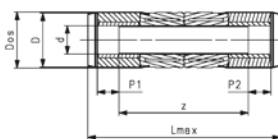
d (mm)	DN (mm)	EPDM Code	Weight (kg)	FKM Code	Weight (kg)	Inch	D (mm)	D1 (mm)	H (mm)	H1 (mm)
25	20	748 440 502	0.010	749 440 502	0.011	3/4	54	27	4	3
32	25	748 440 503	0.011	749 440 503	0.023	1	64	33	4	3
40	32	748 440 504	0.017	749 440 504	0.024	11/4	73	42	4	3
50	40	748 440 505	0.030	749 440 505	0.030	11/2	83	48	4	3
63	50	748 440 506	0.029	749 440 506	0.042	2	102	60	5	4
75	65	748 440 507	0.046	749 440 507	0.068	21/2	121	73	5	4
90	80	748 440 508	0.053	749 440 508	0.083	3	133	89	5	4
110	100	748 440 509	0.088	749 440 509	0.139	4	171	115	6	5
160 - 180	150	748 440 512	0.127	749 440 512	0.240	6	222	160	8	6
225	200	748 440 515	0.195	749 440 515	0.316	8	279	220	8	6
250	250	748 440 517	0.243	749 440 517	0.373	10	337	273	8	6
315	300	748 440 518	0.398	749 440 518	0.750	12	406	325	8	6
355	350	748 440 519	0.800	749 440 519	0.800	14	448	356	10	7
400	400	748 440 520	0.900	749 440 520	0.900	16	512	406	10	7
450	450	748 440 521	1.000	749 440 521	1.000	18	547	457	10	7
500	500	748 440 522	1.000	749 440 522	1.000	20	604	508	10	7



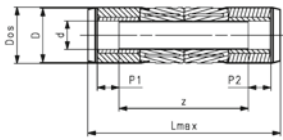
COOL-FIT 4.0 Sliding coupler kit

Model:

- Pre-insulated PE100 SDR11, metric
- Insulation made from GF HE foam
- Outer jacket impact resistant. Color: black
- Integrated sealing lip, for a moisture-proof and vapour tight sealing
- Including two couplers, pipe section and four insulation half shells



d (mm)	d/D (mm)	DN (mm)	SDR	PN (bar)	Code	Weight (kg)	Lmax (mm)	z (mm)	P1 (mm)	P2 (mm)	Dos (mm)
32	32/90	25	11	16	738 913 508	0.499	390	268	36.0	36.0	97
40	40/110	32	11	16	738 913 509	0.475	414	284	40.0	40.0	117
50	50/110	40	11	16	738 913 510	0.630	434	296	44.0	44.0	117
63	63/125	50	11	16	738 913 511	0.937	464	318	48.0	48.0	132
75	75/140	65	11	16	738 913 512	1.693	504	344	55.0	55.0	147



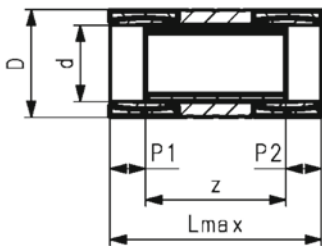
d (mm)	d/D (mm)	DN (mm)	SDR	PN (bar)	Code	Weight (kg)	Lmax (mm)	z (mm)	P1 (mm)	P2 (mm)	Dos (mm)
90	90/160	80	11	16	738 913 513	2.527	544	370	62.0	62.0	168
110	110/180	100	11	16	738 913 514	3.298	614	420	72.0	72.0	188
160	160/250	150	11	16	738 913 517	7.225	714	484	90.0	90.0	258
225	225/315	200	11	16	738 913 520	16.276	853	583	110.0	110.0	324



COOL-FIT 4.0 Sliding coupler kit

Model:

- Pre-insulated PE100 SDR11, metric
- Insulation made from GF HE foam
- Outer jacket impact resistant. Color: black
- Including two couplers, pipe section and insulation half shells



d (mm)	d/D (mm)	DN (mm)	SDR	PN (bar)	Code	Weight (kg)	Lmax (mm)	z (mm)	P1 (mm)	P2 (mm)
250	250/355	250	11	16	738 913 521	22.948	764	517	123.5	123.5
280	280/400	250	11	16	738 913 522	32.633	773	521	126.0	126.0
315	315/450	300	11	16	738 913 523	39.518	824	557	133.5	133.5

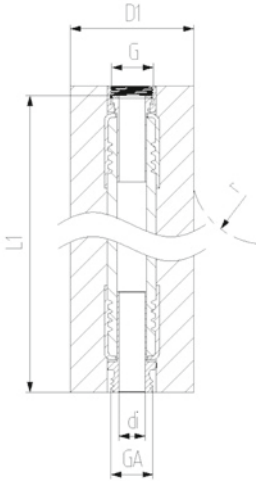
COOL-FIT 4.0 Flexible Hoses

COOL-FIT 4.0 Flex hose



Model:

- EPDM flexible hose with stainless steel protection
- Adaptors stainless steel 1.4404 / 316L
- Pre-Insulation made from EPDM foam with outer jacket impact resistant and tearproof
- With loose union nut G on one end and male thread GA on the other



d (mm)	D1 (mm)	Thread Type	Size (inch)	DN (mm)	PN (bar)	Code	L1 (mm)	di (mm)	r (mm)
20	72	G/GA	½	15	10	738 923 206	1000	15	119
25	82	G/GA	¾	20	10	738 923 207	1000	19	156
32	92	G/GA	1	25	10	738 923 208	1000	25	192
40	95	G/GA	1 ¼	32	8	738 923 209	1500	32	252
50	110	G/GA	1 ½	40	6	738 923 210	2000	38	312
63	123	G/GA	2	50	6	738 923 211	2000	52	372

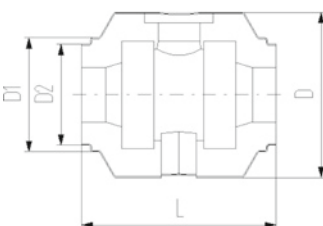
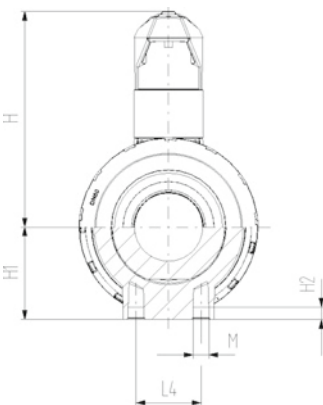
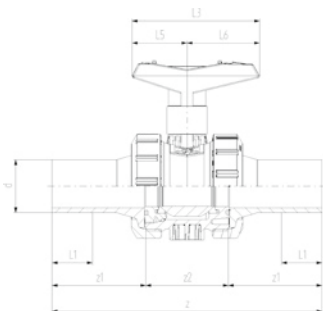
COOL-FIT 4.0 Valves



COOL-FIT 4.0 Ball valve type 546 Pro hand-operated

Model:

- Material: ABS with spigot PE100 SDR11, metric
- Ball seat PTFE
- Integrated stainless steel mounting inserts
- Including insulation half shells
- Separate Fittings type A needed for joining



d (mm)	DN (mm)	PN	kv-value ($\Delta p=1$ bar) (l/min)	SDR	EPDM Code	Weight (kg)
32	25	10	700	11	138 546 108	0.542
40	32	10	1000	11	138 546 109	0.887
50	40	10	1600	11	138 546 110	1.165
63	50	10	3100	11	138 546 111	2.100
75	65	10	5000	11	138 546 112	5.125
90	80	10	7000	11	138 546 113	7.173

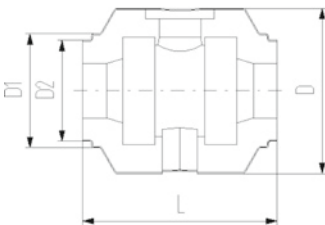
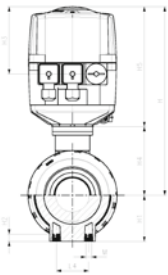
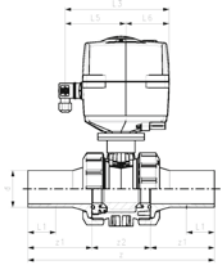
d (mm)	DN (mm)	D (mm)	D1 (mm)	D2 (mm)	L (mm)	L1 (mm)	L3 (mm)	H (mm)	H1 (mm)	H2 (mm)	z (mm)	z1 (mm)	z2 (mm)	closest inch (inch)
32	25	135	97	82	152	36	97	98	36	12	223	76	76	1
40	32	157	117	97	170	40	128	119	44	15	249	82	82	1 ¼
50	40	169	117	97	184	44	128	125	51	15	271	91	91	1 ½
63	50	204	132	117	227	48	152	150	64	15	321	110	110	2
75	65	235	147	132	276	55	270	194	85	15	386	125	125	2 ½
90	80	255	168	147	297	62	270	200	105	15	421	140	140	3

COOL-FIT 4.0 Ball valve type 179
100-230V



Model:

- Material: ABS with spigot PE100 SDR11, metric
- Ball seat PTFE
- Integrated stainless steel mounting inserts
- Voltage 100-230V, 50-60Hz
- Factory set control range 90°
- Heating element, position feedback (Open/Close/ Middle)
- Including insulation half shells
- Separate Fittings type A needed for joining



d (mm)	DN (mm)	PN (bar)	kv-value (dp=1 bar)	SDR	Code	Weight (kg)
32	25	10	700	11	138 546 208	2.838
40	32	10	1000	11	138 546 209	3.174
50	40	10	1600	11	138 546 210	3.452
63	50	10	3100	11	138 546 211	4.475
75	65	10	5000	11	138 546 212	7.156
90	80	10	7000	11	138 546 213	13.000

d (mm)	DN (mm)	D (mm)	D1 (mm)	D2 (mm)	L (mm)	L1 (mm)	L3 (mm)	L4 (mm)	H (mm)	H1 (mm)	H2 (mm)	z (mm)	z1 (mm)	z2 (mm)	M
32	25	135	97	82	152	36	190	25	228	36	12	223	76	71	M6
40	32	157	117	97	170	40	190	45	240	44	15	249	82	85	M8
50	40	169	117	97	184	44	190	45	246	51	15	271	91	89	M8
63	50	204	132	117	227	48	190	45	263	64	15	321	110	101	M8
75	65	235	147	132	276	55	190	70	322	85	15	386	125	136	M8
90	80	255	168	147	297	62	190	70	357	105	15	421	140	141	M8

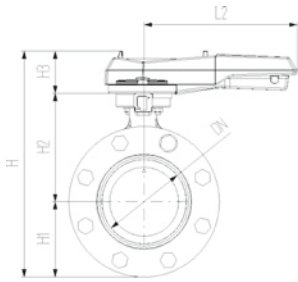
d (mm)	DN (mm)	closest inch (inch)
32	25	1
40	32	1 ¼
50	40	1 ½
63	50	2
75	65	2 ½
90	80	3



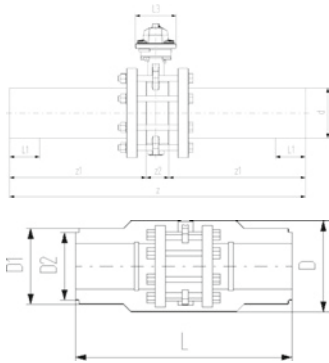
COOL-FIT 4.0 Wafer-style butterfly valve kit type 567 Hand lever with ratchet settings

Model:

- Material: ABS with spigot PE100 SDR11, metric
- Including flange adaptors, backing flanges PP-Steel, bolts and insulation half shells
- Separate Fittings type A needed for joining



d (mm)	DN (mm)	PN	kv-value ($\Delta p=1$ bar) (l/min)	EPDM Code	Weight (kg)
110	100	10	6500	138 567 114	8.950
160	150	10	16600	138 567 117	17.975
225	200	10	39600	138 567 120	28.316



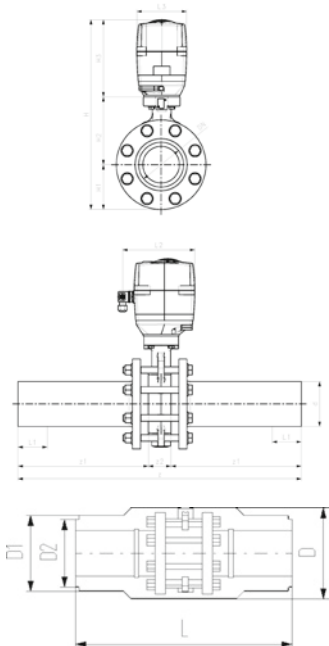
d (mm)	DN (mm)	D (mm)	D1 (mm)	D2 (mm)	L (mm)	L1 (mm)	L2 (mm)	L3 (mm)	H (mm)	H1 (mm)	H2 (mm)	H3 (mm)	z (mm)	z1 (mm)	z2 (mm)
110	100	310	188	168	556	72	255	106	325	104	167	55	696	320	56
160	150	358	259		720	90	255	115	401	143	203	55	895	412	72
225	200	409	325		776	110	408	149	465	170	210	85	996	462	73

d (mm)	DN (mm)	closest inch
110	100	4
160	150	5
225	200	8

COOL-FIT 4.0 Wafer-style butterfly valve kit type 145 100-230V

Model:

- Material: ABS with spigot PE100 SDR11, metric
- Voltage 100-230V, 50-60Hz
- Factory set control range 90°
- Heating element, position feedback (Open/Close/ Middle)
- Including flange adaptors, backing flanges PP-Steel, bolts and insulation half shells
- Separate Fittings type A needed for joining



d (mm)	DN (mm)	PN	kv-value ($\Delta p=1$ bar) (l/min)	EPDM Code	Weight (kg)
110	100	10	6500	138 567 214	13.320
160	150	10	16500	138 567 217	22.346
225	200	10	39600	138 567 220	36.037

d (mm)	DN (mm)	D (mm)	D1 (mm)	D2 (mm)	L (mm)	L1 (mm)	L2 (mm)	L3 (mm)	H (mm)	H1 (mm)	H2 (mm)	H3 (mm)	z (mm)	z1 (mm)	z2 (mm)
110	100	310	188	168	552	72	179	122	460	104	167	190	696	320	56
160	150	358	259		720	90	179	122	535	143	203	190	895	412	72
225	200	409	325		776	110	179	122	580	170	210	200	996	462	73

d (mm)	DN (mm)	closest inch
110	100	4
160	150	6
225	200	8



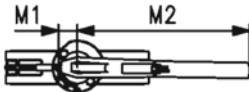
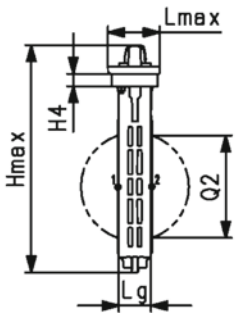
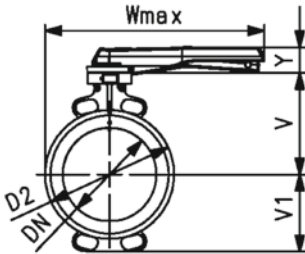
Wafer-style, intermediate installation butterfly valve type 565 PVDF/PA-GF
With hand lever
Flange standard metric/ANSI/BS/JIS
Suitable for ABS, PVC-U, PVC-C, ecoFIT, COOL-FIT and PROGEF Systems

Model:

- Installation length: EN558 row 20, ISO 5752 row 20, API 609 table 2
- Flange standards: ISO 7005 PN10/16, EN 1092 PN10/16, DIN 2501 PN10/16, ANSI/ASME B 16.5 Class 150, BS 1560: 1989 Class 125/150; BS 4504 PN10/16, JIS B 2220 10K, JIS B 2239 10K
- For easy installation and removal
- Lockable ergonomic lever
- Suitable for water and water treatment applications (e.g. sea water, drinking water and industrial water)

Option:

- Individual configuration of the valve possible
- Pneumatic or electric actuators from GF
- Double sensor for electrical position feedback incl. LED feedback



DN (mm)	PN (bar)	d (mm)	Size (inch)	kv-value ($\Delta p=1$ bar) (L/min)	EPDM Code	SP	Weight (kg)	FKM Code	SP	Weight (kg)
50	16	63	2	1445	199 565 000	1	1.3	199 565 020	1	1.4
65	16	75	2 ½	2530	199 565 001	1	1.5	199 565 021	1	1.6
80	16	90	3	4020	199 565 002	1	1.7	199 565 022	1	1.8
100	16	110	4	5850	199 565 003	1	2.5	199 565 023	1	2.7
125	16	140	5	11900	199 565 004	1	3.1	199 565 024	1	3.3
150	16	160	6	18050	199 565 005	1	4.0	199 565 025	1	4.3
200	10	225	8	43667	199 565 006	1	5.3	199 565 026	1	5.7

DN (mm)	D2 (mm)	Wmax (mm)	Hmax (mm)	Lmax (mm)	H4 (mm)	V (mm)	V1 (mm)	Lg (mm)	M1 (mm)	M2 (mm)	Y (mm)	Q2 (mm)
50	100.0	264.0	249.5	96.0	23.0	133.5	63.0	43.0	35.5	204.5	53.0	28.5
65	121.0	271.0	275.5	96.0	23.0	140.0	82.0	46.0	35.5	204.5	53.0	44.0
80	138.0	273.5	288.0	96.0	23.0	146.0	89.0	46.0	35.5	204.5	53.0	63.5
100	158.5	334.0	324.0	96.0	23.0	166.5	104.0	52.0	35.5	254.5	53.0	84.0
125	187.0	348.0	351.0	96.0	23.0	180.0	118.0	56.0	35.5	254.5	53.0	110.5
150	213.0	426.0	372.5	96.0	23.0	189.0	130.5	56.0	35.5	319.5	53.0	137.5
200	267.0	453.0	422.0	96.0	23.0	209.5	159.0	60.0	35.5	319.5	53.0	190.5



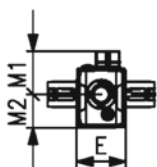
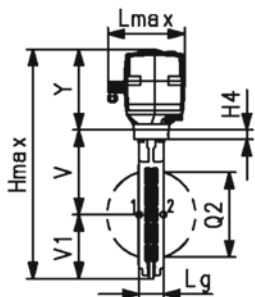
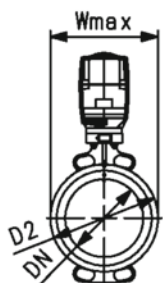
Wafer-style, intermediate installation butterfly valve type 565 PVDF/PA-GF
With electric actuator 230V
Without manual override
Flange standard metric/ANSI/BS/JIS
Suitable for ABS, PVC-U, PVC-C, ecoFIT, COOL-FIT and PROGEF Systems

Model:

- Installation length: EN558 row 20, ISO 5752 row 20, API 609 table 2
- Flange standards: ISO 7005 PN10/16, EN 1092 PN10/16, DIN 2501 PN10/16, ANSI/ASME B 16.5 Class 150, BS 1560: 1989 Class 125/150; BS 4504 PN10/16, JIS B 2220 10K, JIS B 2239 10K
- For easy installation and removal
- Voltage 100-230V, 50-60Hz
- Factory set control range 0-90°
- Heating element, position feedback (Open/Close/ Middle)
- Manual override integrated in electric actuator
- Suitable for water and water treatment applications (e.g. sea water, drinking water and industrial water)
- Switching Ring for the double sensor for electrical position feedback is pre-assembled. Double sensor can be ordered as accessory

Option:

- Individual configuration of the valve possible
- Hand or pneumatic actuators from GF
- Double sensor for electrical position feedback incl. LED feedback
- Optional accessories: Fail-safe return unit, Monitoring board, Position controller, Profibus DP board
- Additional manual override between valve and actuator



DN (mm)	PN (bar)	d (mm)	Size (inch)	kv-value ($\Delta p=1$ bar) (L/min)	Actuator	EPDM Code	SP	Weight (kg)
50	10	63	2	1445	EA45	199 565 300	1	3.3
65	10	75	2 ½	2530	EA120	199 565 301	1	4.6
80	10	90	3	4020	EA120	199 565 302	1	4.7
100	10	110	4	5850	EA120	199 565 303	1	5.6
125	10	140	5	11900	EA120	199 565 304	1	6.1
150	10	160	6	18050	EA250	199 565 305	1	8.7
200	10	225	8	43667	EA250	199 565 306	1	10.0
250	6	280	10	62333	EA250	199 565 307	1	14.5
300	4	315	12	94500	EA250	199 565 308	1	18.2

DN (mm)	FKM Code	SP	Weight (kg)
50	199 565 320	1	3.4
65	199 565 321	1	4.7
80	199 565 322	1	4.8
100	199 565 323	1	5.8
125	199 565 324	1	6.4
150	199 565 325	1	9.0
200	199 565 326	1	10.5
250	199 565 327	1	15.2
300	199 565 328	1	19.4

DN (mm)	D2 (mm)	Wmax (mm)	Hmax (mm)	Lmax (mm)	H4 (mm)	V (mm)	V1 (mm)	Lg (mm)	E (mm)	M1 (mm)	M2 (mm)	Y (mm)	Q2 (mm)
50	100.0	122.5	377.5	190.0	23.0	133.5	63.0	43.0	122.5	107.5	83.0	166.5	28.5
65	121.0	132.5	411.5	190.0	23.0	140.0	82.0	46.0	122.5	107.5	83.0	189.5	44.0
80	138.0	137.5	424.0	190.0	23.0	146.0	89.0	46.0	122.5	107.5	83.0	189.5	63.5
100	158.5	158.5	459.5	190.0	23.0	166.5	104.0	52.0	122.5	107.5	83.0	189.5	84.0
125	187.0	187.0	487.5	190.0	23.0	180.0	118.0	56.0	122.5	107.5	83.0	189.5	110.5
150	213.0	213.0	518.5	190.0	23.0	189.0	130.5	56.0	122.5	107.5	83.0	199.5	137.5
200	267.0	267.0	568.0	190.0	23.0	209.5	159.0	60.0	122.5	107.5	83.0	199.5	190.5
250	325.5	325.5	674.5	190.0	23.0	262.5	195.5	68.0	122.5	107.5	83.0	216.5	239.0
300	380.0	380.0	731.0	190.0	23.0	284.5	230.5	78.0	122.5	107.5	83.0	216.5	285.5

Accessories

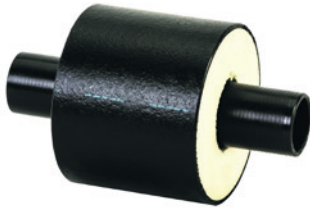


COOL-FIT 4.0 Assembly Aid-Kit Type A

Model:

- For simplified mounting of COOL-FIT 4.0 Fitting on COOL-FIT 4.0 Pipe

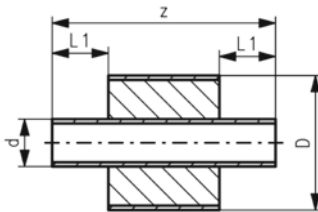
d (mm)	D (mm)	Code	Weight (kg)	pieces/kit
32 - 225	90 - 315	799 738 501	5.600	2 / Dimension



COOL-FIT 4.0 Barrel nipple with insulation, d32-d225

Model:

- Pre-insulated PE100 SDR11/17 metric
- Insulation made from GF HE foam
- Impact resistant. Color: black
- For short connections between COOL-FIT 4.0 Fittings Typ A



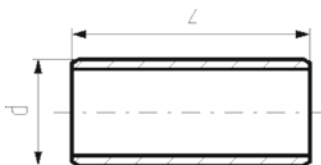
d (mm)	d/D (mm)	DN (mm)	SDR	PN (bar)	Code	Weight (kg)	L1 (mm)	z (mm)	closest inch (inch)
32	32/90	25	11	16	738 913 408	0.126	36	151	1
40	40/110	32	11	16	738 913 409	0.188	40	155	1 ¼
50	50/110	40	11	16	738 913 410	0.226	44	163	1 ½
63	63/125	50	11	16	738 913 411	0.328	48	171	2
75	75/140	65	11	16	738 913 412	0.447	55	185	2 ½
90	90/160	80	11	16	738 913 413	0.631	62	199	3
110	110/180	100	11	16	738 913 414	0.929	72	219	4
160	160/250	150	17	10	738 913 417	1.576	90	255	6
225	225/315	200	17	10	738 913 420	3.254	110	295	8



COOL-FIT 2.0/4.0 Barrel nipple

Model:

- PE100, SDR11/17, metric
- For the shortest possible connection between fittings
- For media temperatures between 0°C up to 60°C
- COOL-FIT 4.0 Adhesive ring needed for joining



d (mm)	SDR	PN	Code	Weight (kg)	z (mm)	closest inch (inch)
32	11	16	738 910 408	0.020	72	1
40	11	16	738 910 409	0.034	80	1 ¼
50	11	16	738 910 410	0.059	88	1 ½
63	11	16	738 910 411	0.101	96	2
75	11	16	738 910 412	0.162	110	2 ½
90	11	16	738 910 413	0.264	124	3
110	11	16	738 910 414	0.454	144	4
140	11	16	738 910 416	0.855	168	5
160	17	10	738 910 417	0.798	180	6
225	17	10	738 910 420	1.885	220	8



COOL-FIT 2.0/4.0 adhesive ring

Model:

- Double sided, for sealing connections of fittings with barrel nipple

D (mm)	d (mm)	d COOL-FIT 4.0 (mm)	d COOL-FIT 2.0 (mm)	Code	Weight (kg)
75	32		32	738 010 012	0.002
90	32 - 50	32	40 - 50	738 010 013	0.002
110	40 - 63	40 - 50	63	738 010 014	0.003
125	63 - 75	63	75	738 010 015	0.003
140	75 - 90	75	90	738 010 016	0.003
160	90 - 110	90	110	738 010 017	0.005
180	110	110		738 010 018	0.005
200	140		140	738 010 019	0.006
250	160	160		738 010 021	0.009
315	225	225		738 010 023	0.027

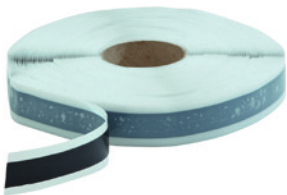


COOL-FIT 4.0 Sealing clamp-kit

Model:

- Supports the function of the top sealing lip of COOL-FIT 4.0 Fittings for vertical installations outdoor
- Material: stainless steel 304/V2A
- Color: black

d (mm)	D (mm)	Code	Weight (kg)	pieces/kit
32	90	738 013 013	0.250	6
40 - 50	110	738 013 014	0.300	6
63	125	738 013 015	0.300	6
75	140	738 013 016	0.300	6
90	160	738 013 017	0.300	6
110	180	738 013 018	0.300	6
160	250	738 013 021	0.390	6
225	315	738 013 023	0.450	6

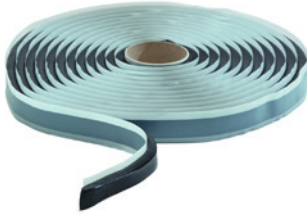


COOL-FIT 4.0 Sealing tape 25mm

Model:

- Supports the function of the top sealing lip of COOL-FIT 4.0 Fittings for vertical installations outdoor
- 30m on a roll, 25mm width, buthylene rubber-based

d (mm)	D (mm)	Code	Weight (kg)
32 - 225	90 - 315	738 013 031	1.400

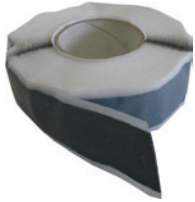


COOL-FIT 4.0 Transition of Insulation

Model:

- For a moistur-proof and vapour tight transition of insulations from COOL-FIT 4.0 to COOL-FIT 2.0
- 4.5m on a roll, buthylene rubber-based

d (mm)	D (mm)	Code	Weight (kg)
32-110	90-180	738 013 041	1.400



COOL-FIT 4.0 Sealing tape 40mm

Model:

- For a water- and steam-tight sealing of inspection gaps in combination with shrink sleeves/ - sockets
- Sealing tape: 40mm width, buthylene rubber-based
- 30 m on a roll

d-d (mm)	D (mm)	Code	Weight (kg)	Closest inch (inch)
25 - 315	250 - 450	738 011 152	2.134	¾ - 12



COOL-FIT 4.0 insulation for welding indicator, coupler d250-d450

- Suitable for COOL-FIT 4.0 couplers d250-d450
- Insulation for welding pin and welding indicator opening
- 2.5m on a roll, 20mm diameter, closed-cell PE foam

d (mm)	Code	Weight (kg)
250 - 450	738 010 055	0.500

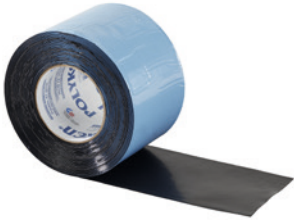


COOL-FIT 4.0 Shrink socket PE

Model:

- For a water- and steam-tight sealing in combination with buthylene rubber-based sealing tape
- Length: 100 mm
- "Heavy duty" version for high end applications
- For connections of the same pipe outer diameter

D (mm)	d (mm)	Code	SP	Weight (kg)	L (mm)
355	250	738 011 024	1	0.900	100
400	280	738 011 025	1	1.100	100
450	315	738 011 026	1	1.900	100
500	355	738 011 027	1	1.000	100
560	400	738 011 028	1	1.000	100
630	450	738 011 029	1	1.000	100



Cold shrink tape PE black

Model:

- For indoor use only
- Width (L) available in 100mm
- 15 m on a roll
- Shrinks without heat application

d-d (mm)	D (mm)	Code	Weight (kg)	L (mm)	Closest inch (inch)
25 - 315	90 - 450	738 011 107	1.400	150	¾ - 8



Hot shrink tape PE black

Model:

- For watertight sealing of outer pipe in underground installations
- Mastic backed
- 30 m on a roll
- Shrink with a burner or hot air gun
- Order sealing patches separately (738 011 109)

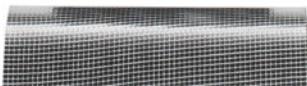
d-d (mm)	D (mm)	Code	Weight (kg)	L (mm)	Closest inch (inch)
250 - 455	355 - 630	738 011 108	3.000	150	¾ - 18

Aussenrohr D/ jacket pipe D (mm)	Länge Schrumpfband/ shrink tape length (mm)
355	1210
400	1350
450	1500
500	1660
560	1850
630	2070

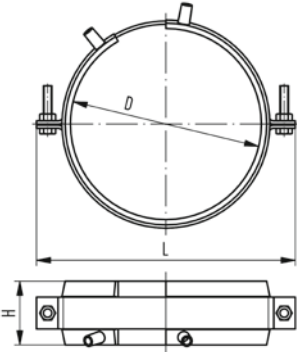
Sealing patch

Model:

- For sealing of hot-shrink-tape in underground installations
- Mastic backed
- 1 patch needed per seal



d-d (mm)	D (mm)	Code	Weight (kg)	L (mm)	Closest inch (inch)
25 - 450	90 - 630	738 011 109	0.100	150	¾ - 18



COOL-FIT 2.0/4.0 fixed point

Model:

- The product consists of two components namely electrofusion tapes and pipe brackets.
- Electrofusion welded tape as permanent connection to transmit the forces that occur in the pipe to the fixed point.
- The delivered pipe brackets are needed to deliver welding pressure during installation and give stability during operation.
- For welding, use an MSA2.x, MSA4.x, MSA 250, 300, 350, 400 or commercially available 220 V fusion machines.
- If you use an MSA fusion machine from GF Piping Systems, use the 799 350 339 adapter or the 790 156 032 y-cable set.
- Please take note of the maximum allowed forces for this version in the table below.
- **Fixed point brackets and cross braces have to be calculated and obtained by the installer. They are not included in the fixed point set from GF.**

D (mm)	d (mm)	d COOL-FIT 4.0 (mm)	d COOL-FIT 2.0 (mm)	Code	Weight (kg)
75	32		32	738 912 012	0.750
90	32 - 50	32	40 - 50	738 912 013	0.895
110	40 - 63	40 - 50	63	738 912 014	0.904
125	63 - 75	63	75	738 912 015	1.103
140	75 - 90	75	90	738 912 016	1.188
160	90 - 110	90	110	738 912 017	1.177
180	110	110		738 912 018	1.530
200	140		140	738 912 019	1.600
250	160	160		738 912 021	1.957
315	225	225		738 912 023	2.388
355	250	250		738 912 024	2.388

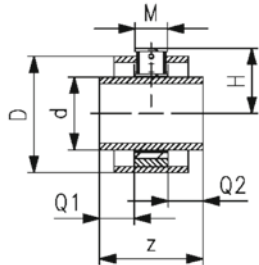
D (mm)	d (mm)	L (mm)	H (mm)	max Force COOL-FIT 4.0 (kN)	max Force COOL-FIT 2.0 (kN)
75	32	150	60		2.0
90	32 - 50	170	60	2.0	3.0 / 5.0
110	40 - 63	180	60	3.0 / 5.0	8.0
125	63 - 75	215	60	8.0	10.0
140	75 - 90	220	60	10.0	10.0
160	90 - 110	255	60	10.0	10.0
180	110	255	60	10.0	
200	140	310	60		10.0
250	160	335	60	10.0	
315	225	400	60	10.0	
355	250	420	60	10.0	



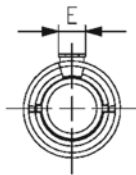
COOL-FIT 4.0 Fixpoint kit for high forces

Model:

- The product consists of fixpoint, pipe section and insulation kit
- Fixed point for installation between two electrofusion fittings, transmits the forces emanating from the pipe to the fixed point
- Pipe section PE100 SDR11, metric
- Fixpoint with welding plate made from S235JR (1.0038). With corrosion protection coating
- Insulation made from EPDM soft foam. For outdoor application use additional protection
- Please take note of the maximum allowed forces for this version in the table below.
- A force calculation of the fixpoint clamp and the attachment point is required
- For the bonding, adhesive 738010060 is recommended
- Availability: d160-d315 January 2023. d355 to d450 on request with delivery time of 3 month.



d (mm)	D (mm)	DN (mm)	SDR	PN (bar)	Code	Weight (kg)
160	250	150	11	16	738 913 817	6.386
225	315	200	11	16	738 913 820	7.479
250	355	250	11	16	738 913 821	10.856
280	400	250	11	16	738 913 822	14.172
315	450	300	11	16	738 913 823	16.272



z (mm)	Q1 (mm)	Q2 (mm)	Dos (mm)	H (mm)	M (mm)	E (mm)	Wrench size (mm)	max. Force (kN)
280	90	90	283	165.5	100	100	24	35
320	110	110	360	205.0	100	100	24	35
346	123	123	391	213.5	100	100	24	35
352	126	126	436	231.0	100	100	24	35
366	133	133	486	279.0	100	180	24	35



COOL-FIT Y cables kit

- The COOL-FIT Y cables are used to speed up the installation of the fixed points electrofusion tapes. The Y cables allow the welding in parallel of 2 E-Tapes, halving the total duration of the fusion process.
- Compatible with all MSA Units

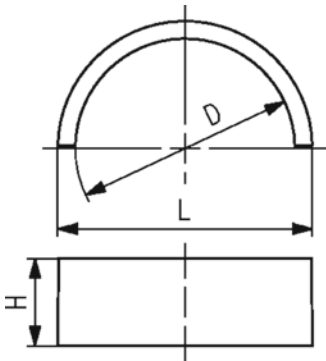
Type	Code	Weight (kg)
4 leads cable with 2mm plugs in output	790 156 032	0.385

Hand scraper

- The Hand Scraper can be used to prepare the fusion zone on PE80 pipes.



Description	Code	Weight (kg)
Hand scraper with long handle	799 198 094	0.143



COOL-FIT 4.0F fixed point set

Model:

- Four PVC-U half shells as permanent connection to transmit the forces that occur in the pipe to the fixed point.
- For cementing use Tangit RAPID, Tangit RAPID static mixer and Tangit RAPID dispenser
- Please take note of the maximum allowed forces for this version in the table below.
- **Fixed point brackets and cross braces have to be calculated and obtained by the installer. They are not included in the fixed point set from GF.**

d (mm)	D (mm)	Code	SP	Weight (kg)	L (mm)	H (mm)	max Force (kN)	Closest inch (inch)
160	250	738 912 321	1	1.957	284	35	10.0	10
225	315	738 912 323	1	2.388	356	35	10.0	12



Tangit Rapid cartridges kit

- 2-Component-Adhesive
- For PVC-U and PVC-C
- Tangit Rapid Kit consists of 6 cartridges, 12 mixers and 2 plastic brushes
- Tool needed: Tangit Rapid dispenser and mixers
- Check chemical resistance list (www.gfps.com)

Language	description	Code	Weight (kg)
DE, FR	50 ml	799 302 005	0.566
FR, NL	50 ml	799 302 041	0.566
DK, SE	50 ml	799 302 042	0.566
GB, IT	50 ml	799 302 043	0.566
FI, NO	50 ml	799 302 044	0.566
DE, ES, FR, GB, IT, NL, PT	400 ml	799 302 007	3.700
DK, FI, NO, SE	400 ml	799 302 047	3.700



Tangit Rapid mixer set

- For Tangit Rapid cartridges
- Bag with 30 pieces for 50ml and 15 pieces for 400ml

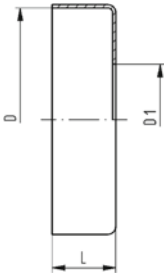
description	Code	SP	Weight (kg)
50ml	799 302 032	1	0.160
400ml	799 302 033	1	0.190



Tangit Rapid dispenser

- For Tangit Rapid cartridges

d-d (mm)	description	Code	SP	Weight (kg)
16 - 140	50ml	799 302 011	1	0.185
110 - 400	400ml	799 302 013	1	1.100



COOL-FIT 4.0 Endcap

Model:

- To protect the insulation at the end of a COOL-FIT 4.0 piping system

d (mm)	D (mm)	D1 (mm)	Code	Weight (kg)	L (mm)	closest inch (inch)
250	355	265	733 960 185	0.155	35	10
280	400	300	733 960 186	0.185	35	10
315	450	335	733 960 187	0.225	35	12
355	500	370	733 963 188	0.269	35	14
400	560	420	733 963 189	0.269	35	16
450	630	470	733 963 190	0.269	35	18



Sealant

Model:

- For sealing and glueing caps
- Cartridge à 290 ml

	Code	SP	Weight (kg)
290 ml	738 011 103	1	0.473



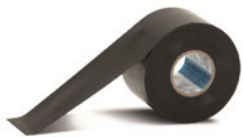
COOL-FIT 2.0/4.0 Adhesive cement

Model:

- For the jointing of NBR foam insulations of flexible hoses and transition fittings

	Code	SP	Weight (kg)
	738 010 060	1	0.240

COOL-FIT 2.0/4.0 Adhesive tape



Model:

- For the jointing of NBR foam insulations of flexible hoses and transition fittings
- 30m on a roll

	Code	SP	Weight (kg)
	738 010 065	1	0.400



Tangit KS Cleaner

- Special cleaner for plastic fusion connections in the material of PE, PP, PB, PVDF, ECTFE and PVC-U
- Suitable for Tangit Rapid. Must not be used for solvent cementing
- DVGW approved
- DW 5290 BR 0464

Size	Code	SP	Weight (kg)
1 liter	799 298 023	8	0.872



Marker

Type	Code	Weight (kg)
silver	799 350 364	0.010



Deburring tool

- Replacable blade

Code	SP	Weight (kg)
790 205 082	1	0.058



Measuring tape (circumference and diameter)

- Circumference: 2 m / 79 inch
- Diameter: 630 mm / 25 inch

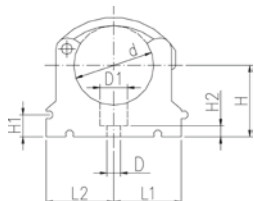
Code	SP	Weight (kg)
790 205 087	1	0.045

KLIP-IT pipe clip type 061 PP metric



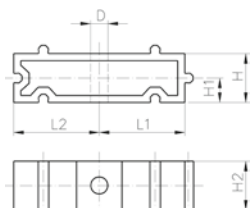
Model:

- Material: clip and safety clip PP black, UV resistant
- d16 - d63: height designed for ball valve type 546 and 543
- **Minimum order quantity: standard packagings SP**



	d	D	d	D1	Code	SP	Weight
	(mm)	(mm)	(inch)	(mm)			(kg)
*	10	5		8	167 061 003	10	0.003
*	12	5		8	167 061 004	10	0.003
*	16	6		11	167 061 035	10	0.007
*	20	6		11	167 061 036	10	0.007
*	25	6		11	167 061 037	10	0.009
*	32	6		11	167 061 038	10	0.012
	40	7		14	167 061 039	10	0.027
	50	7		14	167 061 040	10	0.031
	63	9		17	167 061 041	10	0.052
	75	9	2 ½	17	167 061 012	10	0.057
	90	9	3	17	167 061 013	10	0.092
	110	9	4	17	167 061 014	10	0.117
	125	9		17	167 061 015	10	0.180
	140	9	5	17	167 061 016	10	0.224
	160	9		17	167 061 017	10	0.242

	d	H	H1	H2	H3	L1	L2	SC	closest inch
	(mm)	(mm)	(mm)	(mm)	(mm)	(mm)	(mm)		(inch)
*	10	20	10	6	12	11	14	M4	⅛
*	12	21	10	6	12	11	14	M5	¼
*	16	27	10	6	16	14	17	M5	⅜
*	20	27	10	6	16	17	19	M5	½
*	25	30	10	6	16	19	22	M5	¾
*	32	36	10	6	16	24	27	M5	1
	40	44	10	7	22	34	34	M6	1 ¼
	50	51	10	7	22	37	37	M6	1 ½
	63	64	10	10	25	45	45	M8	2
	75	58	10	10	25	52	52	M8	2 ½
	90	65	10	10	28	65	65	M8	3
	110	75	10	10	28	79	79	M8	4
	125	90	10	10	32	88	88	M8	
	140	110	10	10	32	98	98	M8	5
	160	108	10	10	32	109	109	M8	6

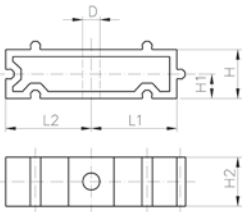


KLIP-IT spacer type 061 PP

Model:

- For pipe clips type 061/061H, PP black, UV resistant
- **Minimum order quantity: standard packaging SP**

d	Inch	Code	SP	Weight	D	L1	L2	H	H1	H2	SC
(mm)	(inch)			(kg)	(mm)	(mm)	(mm)	(mm)	(mm)	(mm)	
10 - 12	⅛ - ¼	167 061 153	10	0.003	5	11	14	20	10	12	M4
16	⅜	167 061 155	10	0.005	6	14	17	20	10	16	M5
20	½	167 061 156	10	0.005	6	17	19	20	10	16	M5
25	¾	167 061 157	10	0.007	6	19	22	20	10	16	M5
32	1	167 061 158	10	0.006	6	24	27	20	10	16	M5
40	1 ¼	167 061 159	10	0.015	7	34	34	20	10	22	M6
50	1 ½	167 061 160	10	0.017	7	37	37	20	10	22	M6
63	2	167 061 161	10	0.020	9	45	45	20	10	25	M8
75	2 ½	167 061 162	10	0.027	9	52	52	20	10	25	M8
90	3	167 061 163	10	0.039	9	65	65	20	10	28	M8



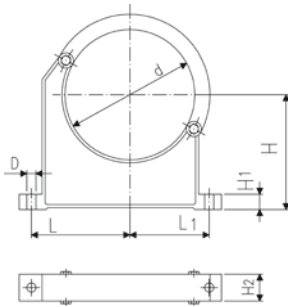
d (mm)	Inch (inch)	Code	SP	Weight (kg)	D (mm)	L1 (mm)	L2 (mm)	H (mm)	H1 (mm)	H2 (mm)	SC
110	4	167 061 164	10	0.048	9	79	79	20	10	28	M8
125	4 ½	167 061 165	10	0.059	9	88	88	20	10	32	M8
140	5	167 061 166	10	0.065	9	98	98	20	10	32	M8
160	6	167 061 167	10	0.071	9	109	109	20	10	32	M8



Pipe clip type 060 PP metric

Model:

- Material: clip and safety clip PP black, UV resistant
- **Minimum order quantity: standard packaging SP or gross packaging GP**
- Accidental opening of the safety clip is not possible
- Clip and safety clip are not assembled in the packaging.
- Pipes with flanges can be installed directly



d (mm)	D (mm)	Code	SP	Weight (kg)	L (mm)	L1 (mm)	H (mm)	H1 (mm)	H2 (mm)	SC	closest inch (inch)
90	9	167 060 038	10	0.144	89	71	105	15	33	M 8	3
110	9	167 060 039	10	0.158	94	80	115	15	33	M 8	4
125	11	167 060 040	10	0.249	116	91	130	20	35	M10	
140	11	167 060 041	10	0.260	121	99	130	20	35	M10	5
160	11	167 060 042	10	0.296	131	107	148	20	35	M10	6
180	11	167 060 043	10	0.327	143	115	163	20	35	M10	7
200	13	167 060 019	5	0.539	151	120	175	25	39	M12	8
225	13	167 060 020	5	0.612	164	132	175	25	39	M12	8
250	13	167 060 021	5	0.657	183	143	200	25	39	M12	9
280	13	167 060 022	5	0.722	197	156	200	25	39	M12	10
315	13	167 060 023	5	0.805	219	171	225	25	39	M12	12
355	17	167 060 024	5	1.251	275	209	258	30	50	M16	14
400	17	167 060 025	4	1.031	300	228	288	30	50	M16	16

Heat tracing



Self regulating heating cable

Model:

- for pipe freeze protection
- cut to length on site
- suitable for in-pipe applications (inside the medium)
- zero maintenance after installation and commissioning
- no risk of overheating due to self-regulating technology
- Cables featuring self-regulating technology. The heat output automatically adjusts depending on the local temperature at every point along its length. It never overheats even when overlapping

L (m)	Code	Weight (kg)
200	790 738 001	14.400
62	790 738 003	4.460
40	790 738 005	2.280
20	790 738 007	1.440



Electronic Controller for pipe freeze protection

The controller is designed to provide userfriendly measurement and control for the self regulating heating cable for COOL-FIT. The Controller has a 25 A control relay and an SPDT alarm relay. Parameter and eventual alarm conditions are shown on the digital display and settings can be programmed easily even without power supply. The controller is supplied with an NTC temperature sensor for efficient media temperature sensing, and mountable DIN rail 35mm for easy mounting on walls.

Model:

- Easy set-up and programming of the unit
- Flexible temperature control of pipe freeze protection
- Media temperature sensing and/or ambient temperature sensing
- Proportional Ambient Sensing Control (PASC) algorithm for enhanced energy savings in ambient sensing mode
- Alarm relay with change over contact to signal power, temperature or communication problems
- Pipe temperature monitoring with high and low temperature alarm
- On wall mountable for outdoor location

Code

790 738 031



Cable gland

- For the leading the heating inside and outside the COOL-FIT 4.0 piping via threaded fitting

Model:

- Material: brass
- threaded connection: 3/4 " male thread R

R (inch)	Code	Weight (kg)
3/4	790 738 020	0.146



Cold lead connection and end seal kit

- For heating cables for COOL-FIT

Model:

- Heat-shrink technique

Inclusive:

- Crimps
- Cold lead shrinkable sleeves
- End seal shrinkable sleeves
- Mastic

Code	Weight
	(kg)
790 738 010	0.045

Tools



COOL-FIT 2.0/4.0 Foam removal and peeling tool

Model:

- Tool for foam removal and peeling of COOL-FIT 2.0 and 4.0 pipes

d (mm)	Code	Weight (kg)
32-90	799 738 001	10.500
110-225	799 738 003	16.500
250-450	799 738 004	71.000



COOL-FIT 2.0/4.0 Upgrade kit foam removal and peeling tool d140-d225

Model:

- Upgrade for COOL-FIT 2.0/4.0 foam removal and peeling tool d110-d225 (799738003)
- For easier foam removal and peeling of COOL-FIT 2.0 and 4.0 pipes in the dimensions d140-d225

Note:

Spindle and clamping shoes are to be used of COOL-FIT 2.0/4.0 foam removal and peeling tool 799738003

d (mm)	Code	Weight (kg)
140-225	799 738 013	50.000



COOL-FIT 2.0/4.0 Foam removal and peeling tool SDR11

Model:

- Tool for foam removal and peeling of COOL-FIT 2.0 and 4.0 pipes

d (mm)	Code	Weight (kg)	SDR
110-225	799 738 015	16.500	11
250-450	799 738 016	71.000	11



Clamping shoe set d250-d450, SDR11

- Suitable for COOL-FIT 2.0/4.0 foam removal and peeling tool (799 738 004)
- Case incl. lid containing clamping shoes, blade holder and accessories

d (mm)	Code	Weight (kg)	SDR
250 - 450	799 738 161	60.000	11

MSA 2.1 Automatic Electrofusion Unit with protocols retrieval



The MSA 2.1 automatic electro fusion unit combines light weight and high efficiency, thanks to its inverter technology and furthermore provides fusion documentation in PDF. The unit is extremely fast and simple, with three basic operations required to operator: connect, scan, start the fusion. It is robust, safe and ergonomic.

All is meant to simplify the job: the barcode scanner, for long distance reading, the cooling system to joint in series, the icon system, to keep the interaction between user and machine intuitive. The entire welding process is controlled and regulated with energy output compensation depending on ambient temperature and the indication of cooling time.

The internal Bluetooth Low Energy device offers the possibility to enter data, monitor the fusion from remote and collect the data recorded via wireless with consumer smartphones, to send them to the headquarter even in real time.

The unit has 1000 protocols permanently stored in the internal memory. The user can copy the fusion reports in an USB stick to print them out in PDF format.

Scope of delivery includes: transport box, angle adapters (4.0 mm and 4.7 mm), operating instructions, START/STOP badge and USB memory stick with PC applications.

Technical Data:

- Operating temperature: -20°C to +50°C
- Mains voltage and frequency: 230V (190V - 265V), 50-60Hz
- Fusion voltage: 8-42 V (48 V)
- Fusion data input mode: bar code, manual
- Fusion current: 90 A (max)
- Suggested power generators: 3.5 kVA
- USB Port: Type A
- Protection factor: Class 1 / IP 65
- Mains cable: 4 m / Fusion cable: 4 m
- Weight: ca. 11.9 kg
- Display: Graphical LCD, adjustable contrast
- Independent from languages
- Bluetooth radio interface

	Type	Code	Weight (kg)
Barcode scanner, transport case, mini Welding Book		790 156 003	11.900
Barcode scanner, transport case, mini Welding Book, Swiss plug		790 156 006	11.900
Barcode scanner, transport case, mini Welding Book, 8m fusion cable		790 156 010	12.900
Barcode scanner, transport case, mini Welding Book, German version		790 156 009	19.500



Long adapters

- Adapters for Electrofusion units with 4 mm connectors.
- Longer version, suitable for all COOL-FIT 4.0 dimensions.

Type	Code	Weight (kg)	Description
4,0 mm	790 128 035	0.058	Angle adapters pair, black



Clamping tool Double, multi size with universal link

- Recommended for the installation of fittings ELGEF Plus and ecoFIT d40 - 200 and d160 - 630mm
- Recommended for the installation of fittings COOL-FIT d32/D75 - d140/D200 and d160/D250 - d450/D630
- The clamping allows installation without tension and avoids movement during fusion and cooling time
- The centrally located adjustable universal link allows installation of electrofusion couplers, elbows and reducers
- Works above, below and alongside the joint
- Adaptor for use with Tee-pieces available (see accessories)

d (mm)	d1 (mm)	Code	Weight (kg)
40	200	799 301 490	4.200
160	630	799 301 496	14.100

d (mm)	Description	Length (mm)	Width (mm)	Height (mm)
40	Scope of delivery: 2 x V-block, 2 x Straight bar, 1 x Universal link, Transport bag (600x380x250)	900	290	230
160	Scope of delivery: 2 x V-block, 2 x Straight bar, 1 x Universal link, Transport bag (780x780x580)	1300	670	550



Clamping tool Quadruple, multi size with universal link

- Recommended for the installation of fittings ELGEF Plus and ecoFIT d40 - 200 and d160 - 630mm
- Recommended for the installation of fittings COOL-FIT d32/D75 - d140/D200 and d160/D250 - d450/D630
- The clamping allows installation without tension and avoids movement during fusion and cooling time
- The centrally located adjustable universal link allows installation of electrofusion couplers, elbows and reducers
- Universal use; works above, below and alongside the joint
- Adaptor for use with Tee-pieces available (see accessories)

d (mm)	d1 (mm)	Code	Weight (kg)
40	200	799 301 489	8.300
160	630	799 301 495	23.300

d (mm)	Description	Length (mm)	Width (mm)	Height (mm)
40	Scope of delivery: 4 x V-block, 2 x Straight bar, 1 x Universal link	900	290	230
160	Scope of delivery: 4 x V-block, 2 x Straight bar, 1 x Universal link	1300	670	550



Tee adaptor

- Suitable for clamping tool (799301495)

d (mm)	d1 (mm)	Code	Weight (kg)	Description	Length (mm)	Width (mm)	Height (mm)
40	200	799 301 491	0.610	Tee adaptor	600	50	40
160	630	799 301 497	3.500	Tee adaptor	1070	75	60



V-block

- Suitable for clamping tool (799301495)

d (mm)	d1 (mm)	Code	Weight (kg)	Description	Length (mm)	Width (mm)	Height (mm)
40	200	799 301 492	1.000	V-block complete	290	230	65
160	630	799 301 498	3.200	V-block complete	660	430	90



Bar extension

- Suitable for clamping tool (799301495)

d (mm)	d1 (mm)	Code	Weight (kg)	Description	Length (mm)	Width (mm)	Height (mm)
160	630	799 301 499	1.000	Bar extension	1000	40	40

Spare parts



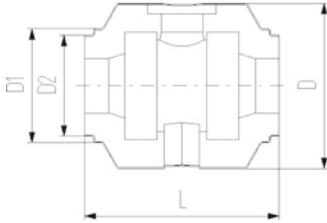
COOL-FIT 2.0/4.0 Insulation for ball valve type 546 / 542

Model:

- Set consisting of half shells and clamps

Note:

Suitable for COOL-FIT ball valve only



d (mm)	D (mm)	DN (mm)	Code	Weight (kg)	D1 (mm)	D2 (mm)	L (mm)
32	135	25	738 990 308	0.160	97	82	152
40	157	32	738 990 309	0.228	117	97	170
50	169	40	738 990 310	0.282	117	97	184
63	204	50	738 990 311	0.498	132	117	227
75	235	65	738 990 312	0.935	147	132	276
90	255	80	738 990 313	1.033	168	147	297



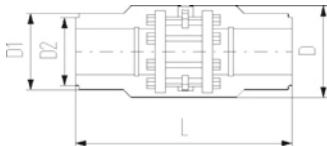
COOL-FIT 2.0/4.0 Insulation for Butterfly Valve Type 567

Model:

- Set consisting of half shells and clamps

Note:

Suitable for COOL-FIT butterfly valve only



d (mm)	D (mm)	DN (mm)	Code	Weight (kg)	D1 (mm)	D2 (mm)	L (mm)
110	310	100	738 990 324	2.054	188	168	556
140	287	125	738 990 326	2.947	233	208	662
160	358	150	738 990 327	3.675	259		720
225	409	200	738 990 330	4.811	325		776



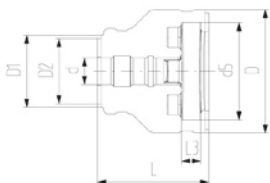
COOL-FIT 2.0/4.0 Insulation for flange adaptor

Model:

- Set consisting of half shells and clamps

Note:

Suitable for COOL-FIT flange adaptor only



d (mm)	D (mm)	DN (mm)	Code	Weight (kg)	D1 (mm)	D2 (mm)	L (mm)	L3 (mm)	d5 (mm)
32	135	25	738 990 458	0.226	90	75	162	26	121
40	170	32	738 990 459	0.331	110	90	165	28	146
50	180	40	738 990 460	0.386	110	90	178	30	156
63	200	50	738 990 461	0.533	125	110	230	32	171
75	220	65	738 990 462	0.674	140	125	232	34	191
90	240	80	738 990 463	0.754	160	140	245	35	206
110	270	100	738 990 464	0.889	180	160	254	36	235
140	300	125	738 990 466	1.138	225	200	299	38	256
160	358	150	738 990 467	2.820	259		332	34	295
225	423	200	738 990 470	3.710	325		383	37	354



COOL-FIT 4.0 Insulation for adaptor fittings PE-metal thread

Model:

- Set consisting of half shells and clamps
- Type A: Female thread RP, NPT, loose nut G
- Type B: Male thread R, NPT
- Type C: Both female and male thread

d (mm)	Code	Weight (kg)	Type
32	738 990 408	0.064	A
32	738 990 418	0.045	B
40	738 990 409	0.083	C
50	738 990 410	0.093	C
63	738 990 411	0.111	C



COOL-FIT 4.0 Insulation for adaptor union PE-PE

Model:

- Set consisting of half shells and clamps

d (mm)	Code	Weight (kg)
32	738 990 428	0.106
40	738 990 429	0.166
50	738 990 430	0.188
63	738 990 431	0.109



COOL-FIT 4.0 Insulation for adaptor union PE-ABS

Model:

- Set consisting of half shells and clamps

d (mm)	Code	Weight (kg)
32	738 990 438	0.088
40	738 990 439	0.107
50	738 990 440	0.126
63	738 990 441	0.178
75	738 990 442	0.374
90	738 990 443	0.493
110	738 990 444	0.597



COOL-FIT 4.0 Insulation for welding indicator-kit

Model:

- Type A suitable for COOL-FIT 4.0 Fittings d32-d110
- Type B suitable for COOL-FIT 4.0 Fittings d160 and coupler d225
- Type C suitable for COOL-FIT 4.0 Fittings d225 except coupler

d (mm)	Code	Weight (kg)	Type	pieces/kit
32 - 110	738 010 052	0.090	A	20
160 - 225	738 010 053	0.200	B	10
225	738 010 054	0.033	C	10



Peeling blade d32-d90

- Suitable for COOL-FIT 2.0/4.0 foam removal and peeling tool (799 738 001)

d (mm)	Code	Weight (kg)
32	799 738 101	0.015
40	799 738 102	0.020
50	799 738 103	0.019
63	799 738 104	0.020
75	799 738 105	0.020
90	799 738 106	0.030



Peeling blade d110-d225

- Suitable for COOL-FIT 2.0/4.0 foam removal and peeling tool (799 738 003)

d (mm)	Code	Weight (kg)
110	799 738 107	0.100
140	799 738 108	0.100
160	799 738 109	0.100
225	799 738 110	0.100



Replacement blade foam separator

- Suitable for COOL-FIT 2.0/4.0 foam removal and peeling tool (799 738 004) and upgrade kit d140-d225 (799 738 013)

Code	Weight (kg)	Suitable for
799 738 115	0.100	799 738 004
799 738 117	0.080	799 738 013



O-Ring for clamping shoe

- Suitable for COOL-FIT 2.0/4.0 foam removal and peeling tool (799 738 001 and 799 738 003)

d (mm)	Code	Weight (kg)
32	799 738 050	0.003
110	799 738 051	0.010



Clamping shoe d32-d90

- Suitable for COOL-FIT 2.0/4.0 foam removal and peeling tool (799 738 001)

d (mm)	Code	Weight (kg)	Colour
32	799 738 020	0.240	silver
40	799 738 021	0.090	red
50	799 738 022	0.210	anthracite
63	799 738 023	0.120	gold
75	799 738 024	0.270	blue
90	799 738 025	0.480	black



Clamping shoe d110-d225

- Suitable for COOL-FIT 2.0/4.0 foam removal and peeling tool (799 738 003)
- Type A: Spindle start
- Type B: With pipe stop

d (mm)	Code	Weight (kg)	Colour	Type
110	799 738 026	0.680	silver	
140	799 738 027	0.480	red	A
140	799 738 037	0.480	red	B
160	799 738 028	0.580	anthracite	A
160	799 738 038	0.580	anthracite	B
225	799 738 029	0.600	gold	A
225	799 738 039	0.600	gold	B



Clamping shoe d250-d450, SDR17

- Suitable for COOL-FIT 2.0/4.0 foam removal and peeling tool (799 738 004)
- Type A: Spindle start
- Type B: With pipe stop

d (mm)	Code	Weight (kg)	Colour	Type
250	799 738 042	0.240	silver	A
250	799 738 052	0.240	silver	B
280	799 738 043	0.265	red	A
280	799 738 053	0.315	red	B
315	799 738 044	0.300	anthracite	A
315	799 738 054	0.350	anthracite	B
355	799 738 045	0.370	gold	A
355	799 738 055	0.430	gold	B
400	799 738 046	0.450	blue	A
400	799 738 056	0.520	blue	B
450	799 738 047	0.550	black	A
450	799 738 057	0.600	black	B



Clamping shoe d110-d225

- ¹⁾Suitable for COOL-FIT 2.0/4.0 foam removal and peeling tool (799 738 003)
- ²⁾Suitable for COOL-FIT 2.0/4.0 foam removal and peeling tool (799 738 015)
- Type A: Spindle start
- Type B: With pipe stop

Remarks	d (mm)	Type	Code	Weight (kg)	Colour	SDR
	1,2	110	799 738 026	0.680	silver	SDR11
	1,2	140	799 738 027	0.480	red	SDR11
	1,2	140	799 738 037	0.480	red	SDR11
	1	160	799 738 028	0.580	anthracite	SDR17
	1	160	799 738 038	0.580	anthracite	SDR17
	2	160	799 738 121	0.580	anthracite	SDR11
	2	160	799 738 122	0.580	anthracite	SDR11
	1	225	799 738 029	0.600	gold	SDR17
	1	225	799 738 039	0.600	gold	SDR17
	2	225	799 738 123	0.600	gold	SDR11
	2	225	799 738 124	0.600	gold	SDR11



Clamping shoe d110-d225

- ¹⁾Suitable for COOL-FIT 2.0/4.0 foam removal and peeling tool (799 738 003)
- ²⁾Suitable for COOL-FIT 2.0/4.0 foam removal and peeling tool (799 738 015)
- Type A: Spindle start
- Type B: With pipe stop

Remarks	d (mm)	Type	Code	Weight (kg)	Colour	SDR
	1,2	110	799 738 026	0.680	silver	SDR11
	1,2	140	A 799 738 027	0.480	red	SDR11
	1,2	140	B 799 738 037	0.480	red	SDR11
	1	160	A 799 738 028	0.580	anthracite	SDR17
	1	160	B 799 738 038	0.580	anthracite	SDR17
	2	160	A 799 738 121	0.580	anthracite	SDR11
	2	160	B 799 738 122	0.580	anthracite	SDR11
	1	225	A 799 738 029	0.600	gold	SDR17
	1	225	B 799 738 039	0.600	gold	SDR17
	2	225	A 799 738 123	0.600	gold	SDR11
	2	225	B 799 738 124	0.600	gold	SDR11

Circular blade



- Suitable for COOL-FIT 2.0/4.0 foam removal and peeling tool (799 738 001 and 799 738 003)

Code	Weight (kg)
799 738 040	0.008

Circular blade-Set



- Suitable for COOL-FIT 2.0/4.0 foam removal and peeling tool (799738001 and 799738003)
- Consists of: Circular blade, holder and screw

d (mm)	Code	Weight (kg)
32 - 90	799 738 048	0.025
110 - 225	799 738 049	0.025

Saw blade rotary saw



- Suitable for COOL-FIT 2.0/4.0 foam removal and peeling tool (799 738 004)

Code	Weight (kg)
799 738 114	0.010

Saw



- Suitable for COOL-FIT 2.0/4.0 foam removal and peeling tool (799 738 003)

d (mm)	Code	Weight (kg)
140 - 225	799 738 060	1.000



Saw blade

- Suitable for COOL-FIT 2.0/4.0 foam removal and peeling tool (799 738 003)

d (mm)	Code	Weight (kg)
140 - 225	799 738 061	0.029



Locking pin

- Suitable for COOL-FIT 2.0/4.0 foam removal and peeling tool (799 738 004)

Code	Weight (kg)
799 738 116	0.250



Spare blades for deburring tool

- 10 pieces

Code	SP	Weight (kg)
790 205 083	1	0.031

Local support around the world

Visit our webpage to get in touch with your local specialist:

www.gfps.com/our-locations



The information and technical data (altogether "Data") herein are not binding, unless explicitly confirmed in writing.
The Data neither constitutes any expressed, implied or warranted characteristics, nor guaranteed properties or a guaranteed durability. All Data is subject to modification. The General Terms and Conditions of Sale of Georg Fischer Piping Systems apply.